

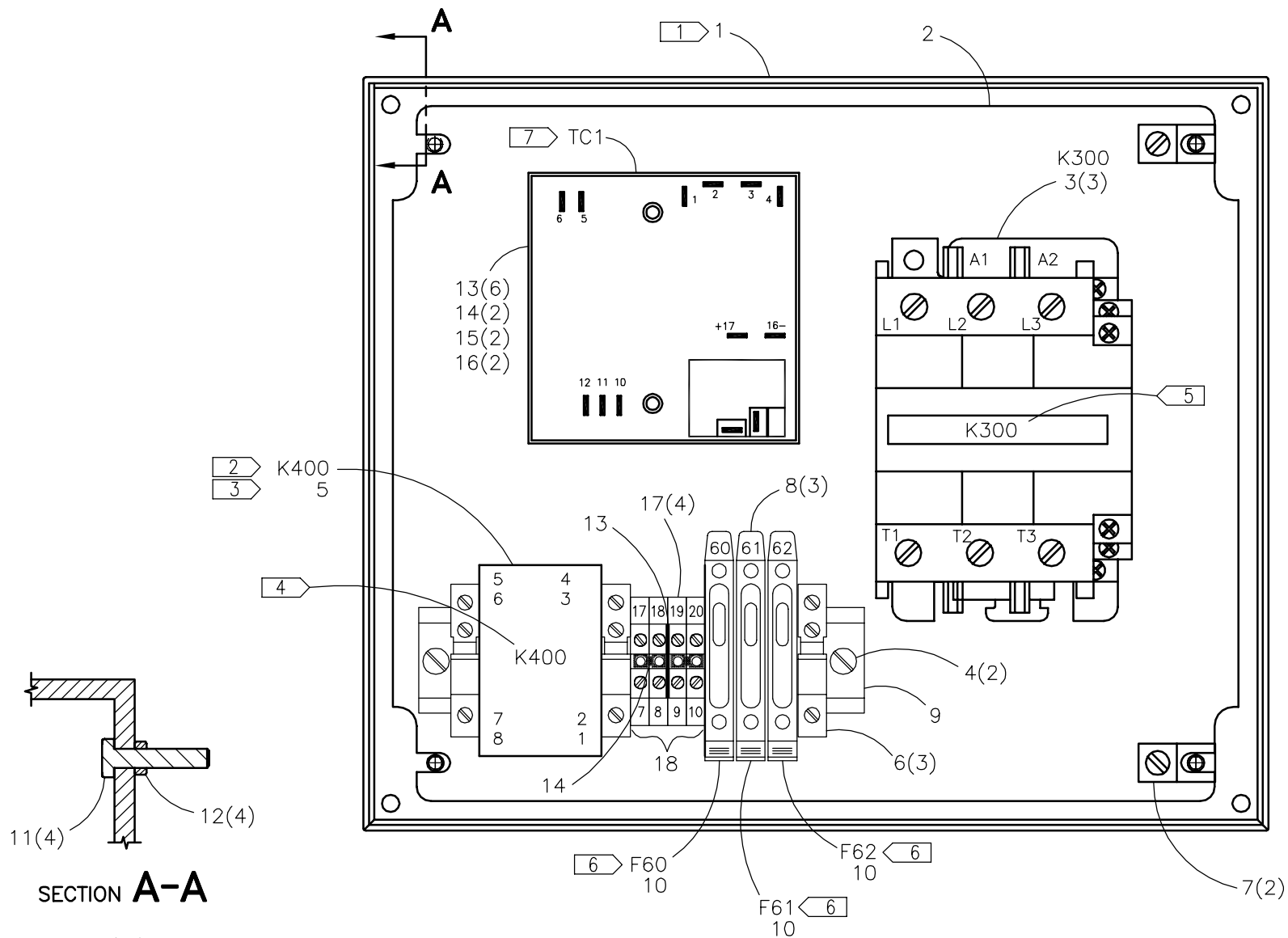


McElroy Manufacturing, Inc.
 The leader by design.
 Tulsa, Oklahoma U.S.A.

DRAWN: BEA CHECK: MJA APPRV'D: PJB DATE: 6/27/03 DWG No: T9013700 SHT No: 4 REV No:

TracStar® 900 CONTACTOR BOX ASSEMBLY PART No: T9013704 CAD No: T9013704

NOTE: THIS DRAWING AND THE INFORMATION CONTAINED THEREIN IS THE CONFIDENTIAL AND PROPRIETARY PROPERTY OF McElroy Manufacturing, Inc. THE DRAWING IS NOT TO BE REPRODUCED IN ANY MANNER, SUBMITTED OUTSIDE PARTIES FOR EXAMINATION, OR USED DIRECTLY OR INDIRECTLY FOR THE PURPOSES OTHER THAN THOSE FOR WHICH IT WAS FURNISHED WITHOUT WRITTEN PERMISSION OF McElroy Manufacturing, Inc.



TracStar® 900
CONTACTOR BOX ASSEMBLY

Parts List

ITEM	PART NO.	QTY.	DESCRIPTION
	T9013704		ASSEMBLY
F60,F61,F62	MLN00284	6	2 AMP FUSE
K300	MKB00091	1	CONTACTOR
K400	MKB00100	1	VOLTAGE MONITOR
TC1	841104	1	TEMPERATURE CONTROL
1	T9013705	1	CONTACTOR BOX MODIFICATION
2	T9013706	1	CONTACTOR BOX PANEL MODIFICATION
3	MAH00004	3	#10-32NF X 3/8LG PHSMS
4	MAH00002	2	#8-32NC X 3/8LG PHSMS
5	MKB00082	1	RELAY SOCKET
6	MLM00056	3	END CLAMP
7	MLM00093	2	GROUND LUG
8	MLM00060	3	TRANSPARENT MARKER CARRIER
9	MLM00061	0.5 FT	STEEL DIN RAIL
10	MLN00084	3	FUSE HOLDER
11	MAB00005	4	1/4-20NC X 1-1/4 LG HHCS
12	MBB00005	4	1/4-20NC FINISH JAM NUT
13	MLM00054	1	PARTITION PLATE
14	MLM00154	1	FIXED BRIDGE
15	MAH00180	2	#8-32NC X 1-1/4LG RND HD SLOT MACHINE SCREW
16	MBE00003	2	#8 REG SPLIT LOCK WASHER
17	MLM00051	4	TERMINAL
18	MLM00059	1	MARKING NUMBERS
19	T9016702	1	HEATER CONTROLS & FUSES LABEL (NOT SHOWN)
20	MLL00096	5.3 FT	#16HK-UP WIRE,UL1007, DARK BROWN (NOT SHOWN)
21	MLL00100	1.5 FT	#12 WIRE, UL3317, DARK BROWN (NOT SHOWN)
22	841105	-1	POTENTIOMETER (NOT SHOWN)
23	841106	-1	KNOB (NOT SHOWN)

NOTES:

1. INSTALL SEALING RING INCLUDED WITH CONTACTOR BOX.
2. SECURE K400 TO SOCKET WITH WIRE TIES.
3. SET VOLTAGE MONITOR TO 240 VOLTS.
4. IDENTIFY AS SHOWN WITH LABEL MARKER.
5. IDENTIFY AS SHOWN WITH PERMANENT MAKING PEN.
6. PUT SPARE FUSES IN SPARE FUSE HOLDER PORTION OF ITEM 10.
7. REMOVE POTENTIOMETER AND KNOB FROM 841104. IDENTIFY POTENTIOMETER AS PART #841105 AND KNOB AS PART # 841106. RECEIVE INTO STOCK WITH FINISHED CONTACTOR BOX.