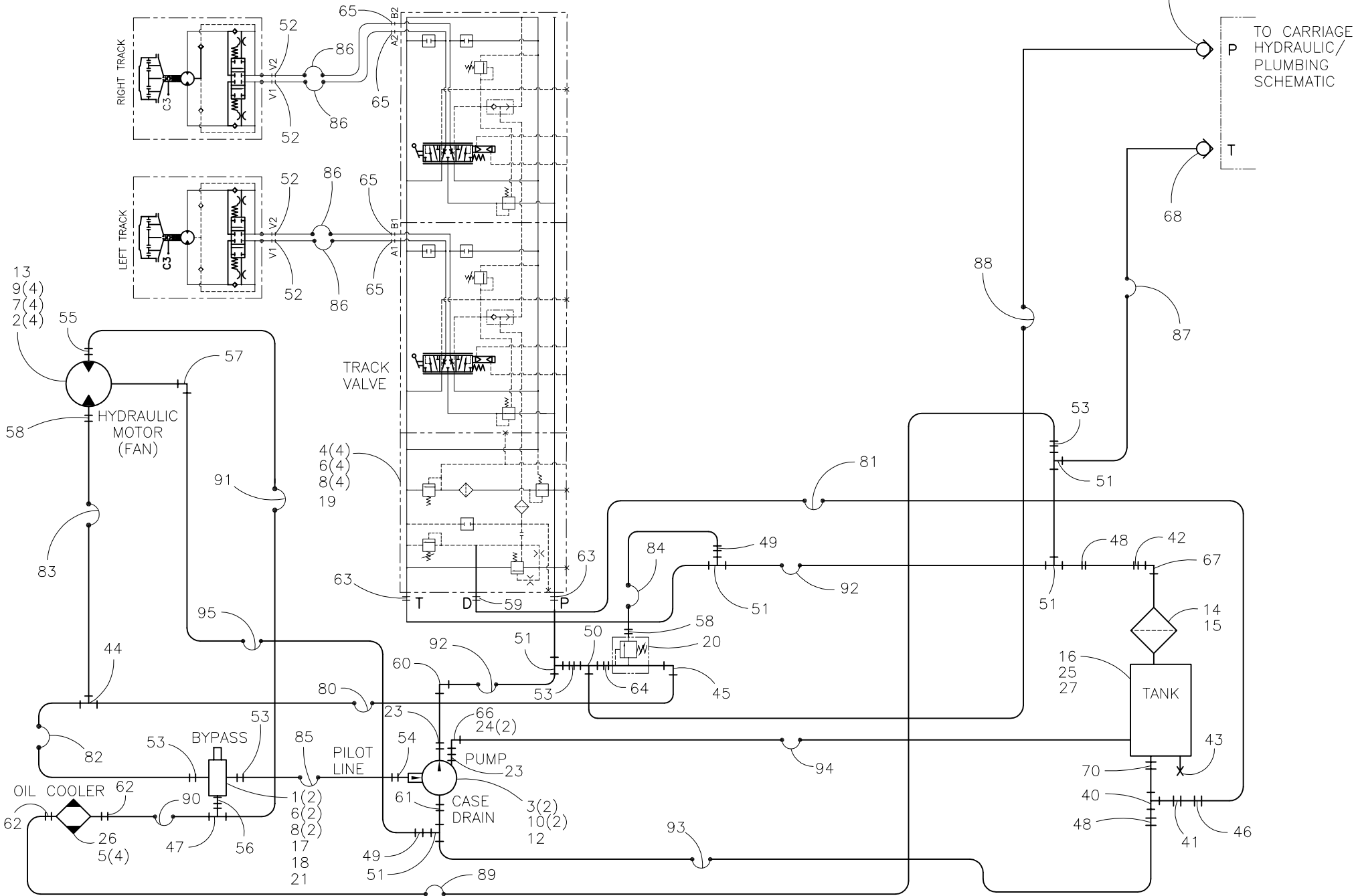




NOTE: THIS DRAWING AND THE INFORMATION CONTAINED THEREIN IS THE CONFIDENTIAL AND PROPRIETARY PROPERTY OF McElroy Manufacturing, Inc. THE DRAWING IS NOT TO BE REPRODUCED IN ANY MANNER, SUBMITTED OUTSIDE PARTIES FOR EXAMINATION, OR USED DIRECTLY OR INDIRECTLY FOR THE PURPOSES OTHER THAN THOSE FOR WHICH IT WAS FURNISHED WITHOUT WRITTEN PERMISSION OF McElroy Manufacturing, Inc.



TracStar® 900 VEHICLE HYDRAULIC / PLUMBING SCHEMATIC

Parts List

ITEM	PART NO.	QTY.	DESCRIPTION
	T9000903		ASSEMBLY
1	MAB00007	2	1/4-20NC X 1-3/4 LG HHCS
2	MAB00034	4	5/16-18NC X 1-1/4 LG HHCS
3	MAB00069	2	1/2-13NC X 1-1/2 LG HHCS
4	MAH00172	4	1/4-20NC X 3/4 LG HWHSMS
5	MJQ00394	4	OIL COOLER MOUNTING KIT WITHOUT STRAP
6	MBA00005	6	1/4-20NC FINISH HEX NUT
7	MBA00006	4	5/16-18NC FINISH HEX NUT
8	MBE00005	6	1/4 REGULAR SPLIT LOCK WASHER
9	MBE00006	4	5/16 REGULAR SPLIT LOCK WASHER
10	MBE00009	2	1/2 REGULAR SPLIT LOCK WASHER
11			
12	MEA00060	1	PISTON PUMP
13	MEA00070	1	HYDRAULIC MOTOR
14	MED00031	1	FILTER HEAD
15	MED00052	1	FILTER ELEMENT
16	MEE00014	1	5" SIGHT GAUGE W/THERMOMETER
17	MEF00096	1	3-WAY VALVE
18	MEF00101	1	30WATT SOLENOID
19	MEF00125	1	DIRECTIONAL VALVE
20	MEH00014	1	RELIEF VALVE
21	MEL00014	1	3-WAY VALVE MANIFOLD
22			
23	MFC00054	2	SPLIT FLANGE KIT
24	MFD00019	2	1-1/4 HOSE CLAMP
25	MFK00001	1	FILLER CAP
26	MJQ00393	1	OIL COOLER
27	T9006701	1	HYDRAULIC RESERVOIR WELDMENT

NOTES:

1. FOR PLUMBING FITTINGS (ITEMS 40 THRU 70) SEE CARRIAGE PLUMBING FITTING KIT #AT9000904.
2. FOR HOSE ASSEMBLIES (ITEMS 80 & LARGER) SEE CARRIAGE HOSE KIT #AT9000903.

DRAWING REVISION HISTORY LISTING

PART NO: T9000903

DESCRIPTION: TracStar® 900 VEHICLE HYDRAULIC/PLUMBING SCHEMATIC

<u>APPR.</u>	<u>REV</u>	<u>DATE</u>	<u>BY</u>	<u>DESCRIPTION OF REVISION</u>
BWJ	A	8/6/03	RLE	REVISED MEA00051 TO MEA00070, MJQ00344 TO MJQ00393, MFC00102 TO MFC00110, MAI00003 QTY. (2) TO MJQ00394 QTY. (4), MBA00006 FROM QTY. (6) TO QTY. (4), MFB00076 FROM QTY. (1) TO QTY. (2), MFB00124 FROM QTY. (2) TO QTY. (5), MFB00196 FROM QTY. (1) TO QTY. (2), MFC00002 FROM QTY. (4) TO QTY. (3), MFC00006 FROM QTY. (2) TO QTY. (1), MFC00027 FROM QTY. (3) TO QTY. (2), DELETED MBF00006 QTY. (2), MEJ00036 QTY. (1), MFB00018 QTY. (2), MFC00025 QTY. (1), MFC00080 QTY. (1), MFC00092 QTY. (1) & ADDED MFC00024 QTY. (1), MFC00063 QTY. (1), MFC00079 QTY. (2), MFC00120 QTY. (1). CHANGED FAN MOTOR, OIL COOLER, & ASSOCIATED PLUMBING TO IMPROVE COOLING. OTHER PLUMBING CHANGES TO REDUCE PRESSURE LOSSES. REMOVED FITTINGS FROM PARTS LIST & CREATED SEPARATE PARTS LIST, AT9000904 T900 VEHICLE PLUMBING FITTING KIT & ADDED NOTES #1 & #2.
BWJ	B	09/25/03	BWW	UPDATED DRAWING TO MATCH CHANGES TO FITTING PARTS LIST.

TracStar® 900 VEHICLE PLUMBING FITTING KIT

Parts List

ITEM	PART NO.	QTY.	DESCRIPTION
	AT9000904		ASSEMBLY
40	MFA00029	1	12MPT/12FPT/12FPT TEE
41	MFA00030	1	12MPT/6FPT REDUCER
42	MFA00138	1	16MPT/12FPT REDUCER
43	MFA00201	1	16 MPT PLUG WITH MAGNETIC INSERT
44	MFB00017	1	6MJIC/6MJIC/6MJIC TEE
45	MFC00024	1	8MSAE/6MJIC ELBOW
46	MFB00026	1	6MPT/6MJIC ADAPTER
47	MFB00033	1	8MJIC/8FSJIC/8MJIC TEE
48	MFB00055	2	12MPT/12MJIC ADAPTER
49	MFB00076	2	12FSJIC/6MJIC REDUCER
50	MFB00077	1	8MJIC/8MJIC/8FSJIC TEE
51	MFB00124	5	12FSJIC/12MJIC TEE
52	MFB00195	4	6MJIC/6MBSPP ADAPTER
53	MFB00196	2	12FJIC/8MJIC REDUCER
54	MFC00002	3	6MSAE/6MJIC ADAPTER
55	MFC00006	1	8MSAE/8MJIC ADAPTER
56	MFC00007	1	6MSAE/8MJIC ADAPTER
57	MFC00063	1	4MSAE/4MJIC ELBOW
58	MFC00027	2	8MSAE/6MJIC ADAPTER
59	MFC00003	1	6MSAE/6MJIC ELBOW
60	MFC00052	1	12MJIC/20 FLANGE ELBOW
61	MFC00061	1	10MSAE/12MJIC ADAPTER
62	MFC00079	2	8MJIC/12MSAE ADAPTER
63	MFC00088	2	12SAE/12JIC ADAPTER
64	MFC00120	1	8MSAE/8FSJIC ADAPTER
65	MFC00110	4	10MSAE/8MJIC ADAPTER
66	MFD00005	1	90 DEG HOSE END
67	MFD00031	1	1" STREET ELBOW
68	MFH00016	1	1/2FNPT QUICK DISC COUPLER
69	MFH00017	1	1/2FNPT QUICK DISC NIPPLE
70	MFI00041	1	3/4 NPT X HS CLOSE NIPPLE

DRAWING REVISION HISTORY LISTING

PART NO: AT9000904
DESCRIPTION: TracStar 900 VEHICLE PLUMBING FITTING KIT

<u>APPR.</u>	<u>REV</u>	<u>DATE</u>	<u>BY</u>	<u>DESCRIPTION OF REVISION</u>
BWJ	A	09/25/03	RLE	REVISED TO REMOVE ITEM 47 MFB00033 AND CHANGE ITEM 59 MFC00042 TO MFC00003. CHANGES MADE TO MATCH AS BUILT CONDITION.
BWJ	B	10/21/03	BWW	ORIGINAL QTY OF ITEM 47 MFB00033 SHOULD HAVE BEEN 2 WITH 1 BEING REMOVED IN REV. A. CORECTED PARTS LIST TO ADD QTY OF 1 ITEM 47 MFB00033 AS CALLED OUT ON DRAWING.

TracStar® 900 VEHICLE HOSE KITParts List

ITEM	PART NO.	QTY.	DESCRIPTION
	AT9000903		ASSEMBLY
80	HABDBD042	1	HOSE ASSEMBLY OAL 42"
81	HABDBD046	1	HOSE ASSEMBLY OAL 46"
82	HABDDD023	1	HOSE ASSEMBLY OAL 23"
83	HABDDD028	1	HOSE ASSEMBLY OAL 28"
84	HABDBD025	1	HOSE ASSEMBLY OAL 25"
85	HBDDDD025	1	HOSE ASSEMBLY OAL 25"
86	HCBDDE058	4	HOSE ASSEMBLY OAL 58"
87	HDAEBG102	1	HOSE ASSEMBLY OAL 102"
88	HCAEBE072	1	HOSE ASSEMBLY OAL 72"
89	HCBEBE091	1	HOSE ASSEMBLY OAL 91"
90	HCBEBE019	1	HOSE ASSEMBLY OAL 19"
91	HCBEDE033	1	HOSE ASSEMBLY OAL 33"
92	HDBGDG061	2	HOSE ASSEMBLY OAL 61"
93	HDBGDG084	1	HOSE ASSEMBLY OAL 84"
94	HPZZZZ074	1	HOSE ASSEMBLY OAL 74"
95	HABBB015	1	HOSE ASSEMBLY OAL 15"

DRAWING REVISION HISTORY LISTING

PART NO: AT9000903
DESCRIPTION: TracStar 900 VEHICLE HOSE KIT

<u>APPR.</u>	<u>REV</u>	<u>DATE</u>	<u>BY</u>	<u>DESCRIPTION OF REVISION</u>
BWJ	A	8/6/03	RLE	REVISED ITEM #86 HBBDDD058 TO HCBDDDE058, ITEM #87 HCAEBE102 TO HDAEBG102, ITEM #88 HCAEDD072 TO HCAEBE072, ITEM #90 HCBEDE024 TO HCBEBE019 & ADDED ITEM #95 HABBBDD015 QTY. (1).