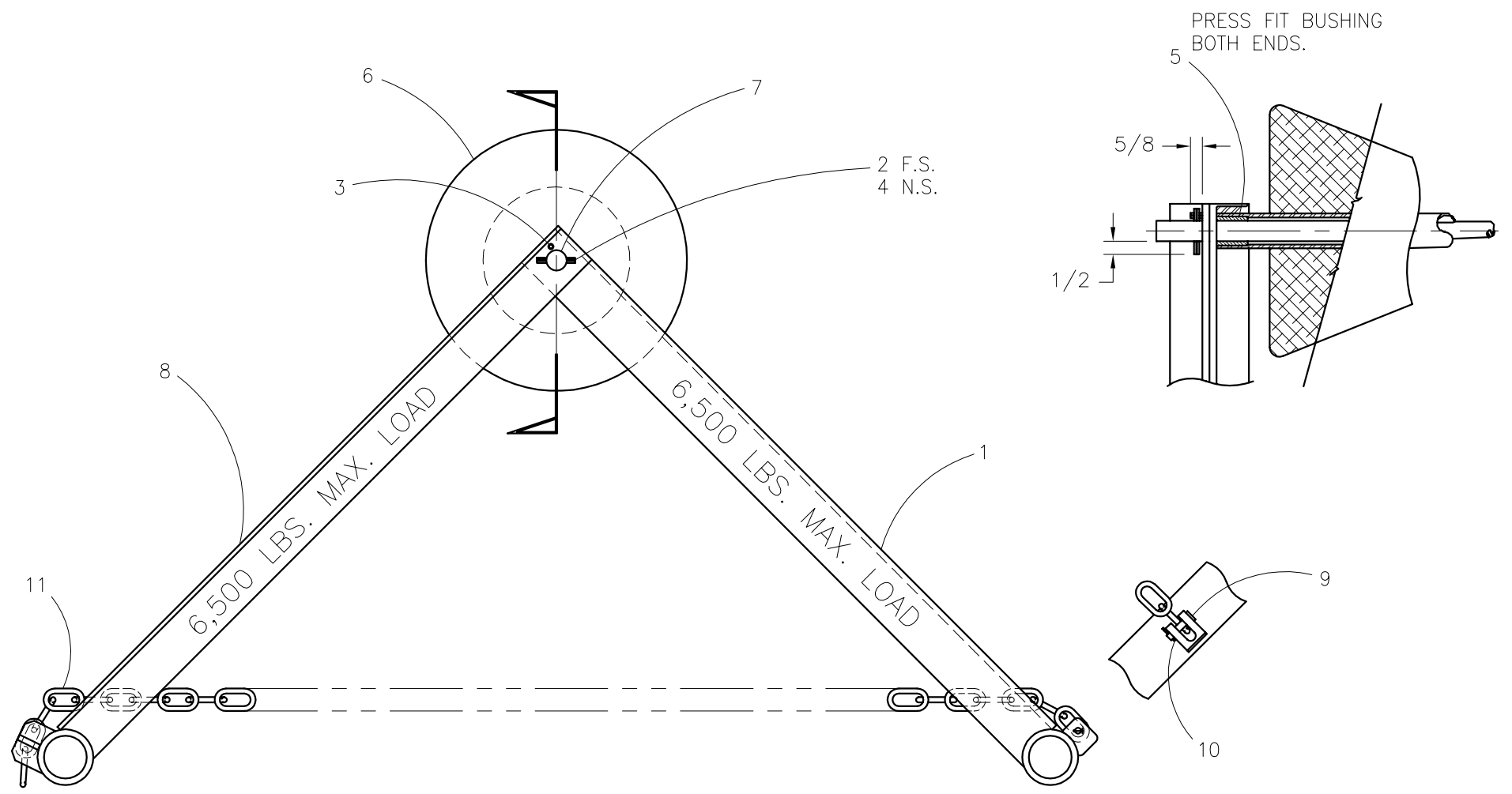




McElroy Manufacturing, Inc.
 The leader by design.
 Tulsa, Oklahoma U.S.A.

DRAWN: TLW	CHECK: SWB	APPRV'D: B	DATE: 4/03/96	DWG No.: 4823900	SHT No.: 1	REV No.: K	PART No.: 4823901
#1648A PIPE STAND ASSEMBLY							CAD No.: 4823901

NOTE: THIS DRAWING AND THE INFORMATION CONTAINED THEREIN IS THE CONFIDENTIAL AND PROPRIETARY PROPERTY OF McElroy Manufacturing, Inc. THE DRAWING IS NOT TO BE REPRODUCED IN ANY MANNER, SUBMITTED OUTSIDE PARTIES FOR EXAMINATION, OR USED DIRECTLY OR INDIRECTLY FOR THE PURPOSES OTHER THAN THOSE FOR WHICH IT WAS FURNISHED WITHOUT WRITTEN PERMISSION OF McElroy Manufacturing, Inc.



#1648A PIPE STAND ASSEMBLYPARTS LIST

ITEM	PART NO.	QTY	DESCRIPTION
	4823901	1	Assembly
1	4823905	1	Inner Leg
2	MCH00005	1	Ø1/8" x 2" Lg. Cotter Pin
3	MCG00008	1	Ø1/4" x 1" Lg. Roll Pin
4	MCG00012	1	Ø1/4" x 2 1/2" Lg. Roll Pin
5	MDM00120	2	Bronze Bushing
6	4823302	1	Roller Assembly
7	4823908	1	Roller Shaft
8	4823902	1	Outer Leg
9	MCF00019	2	Ø1/2" x 2-11/32" Grip Clevis Pin
10	MCH00001	2	Ø1/8" x 1" LG. Cotter Pin
11	4828601	2	Chain Modification

DRAWING REVISION HISTORY LISTING

PART NO: 4823901

DESCRIPTION: #1648A PIPE STAND ASSEMBLY

<u>APPR.</u>	<u>REV</u>	<u>DATE</u>	<u>BY</u>	<u>DESCRIPTION OF REVISION</u>
B	E	4/29/96	TLW	REDRAWN IN AUTOCAD AND REDUCED TO "A" SIZE FORMAT WITH TYPED PARTS LIST.
TLW	F	12/16/97	TGW	REVISED ITEM 9 FROM P/N 4823909 CHAIN KEEPER PIN TO MCF00019 CLEVIS PIN (1/2 DIA x 2 11/32 GRIP). REVISED ITEM 10 (#MCH00001 COTTER PIN) QTY FROM (4) TO (2).
LAA	G	11/17/03	RLE	REVISED MAX. LOAD CALLOUT FROM 5000 TO 6500 DUE TO LOAD SPECIFICATION CHANGE.
SWB	H	4/23/04	ALK	CHANGED ITEM #11 MDG00021 3/8 SIZE CHAIN x 7 Ft. LG. TO 4828601 CHAIN MODIFICATION, DUE TO CHAIN BEING PURCHASED CUT.
SPA	J	02/01/06	JAB	CORRECTED LOCATION OF ITEMS 3 AND 4 (MCG00008 AND MCG00012), BY SWAPPING CALL-OUTS.
SWB	K	09/29/06	ARB	REVISED TO MOVE THE WEIGHT LIMIT STENCIL NOTE FROM ASSEMBLY TO LEG WELDMENT DRAWING PER MANUFACTURING PROCESS.