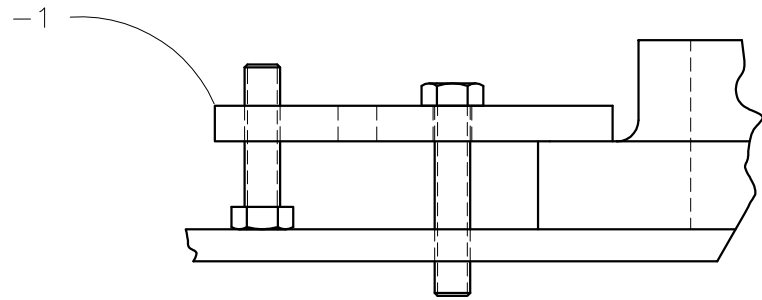
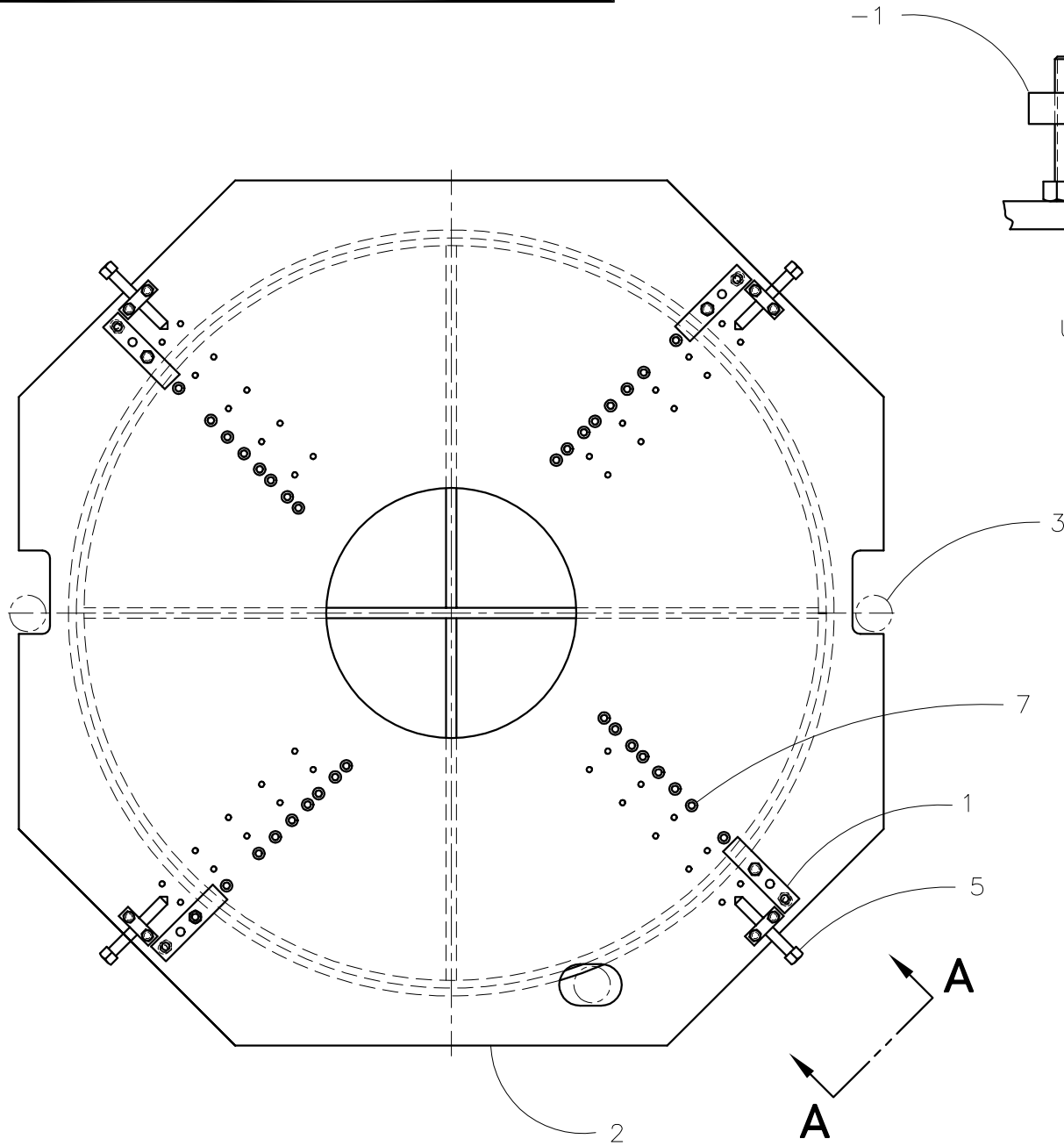




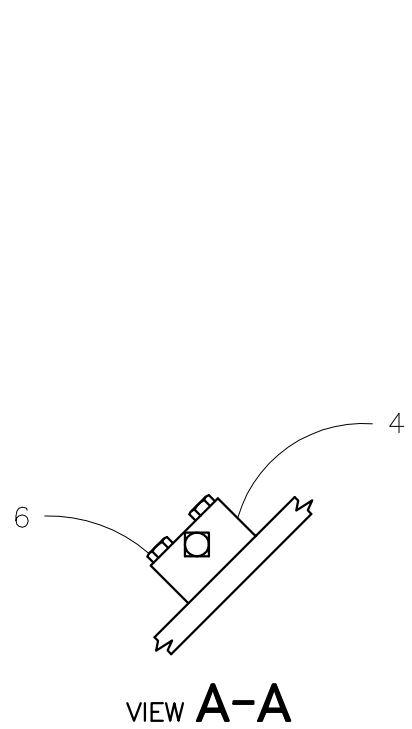
**McElroy Manufacturing, Inc.**  
 The leader by design.  
 Tulsa, Oklahoma U.S.A.

DRAWN: BB	CHECK: BWP	APPRV'D: SWB	DATE: 9/16/97	DWG No: 3606900	SHT No: 1	REV No: U	PART No: 3606901
#1236 STUB END HOLDER ASSEMBLY							CAD No: 3606901

NOTE: THIS DRAWING AND THE INFORMATION CONTAINED THEREIN IS THE CONFIDENTIAL AND PROPRIETARY PROPERTY OF McElroy Manufacturing, Inc. THE DRAWING IS NOT TO BE REPRODUCED IN ANY MANNER, SUBMITTED OUTSIDE PARTIES FOR EXAMINATION, OR USED DIRECTLY OR INDIRECTLY FOR THE PURPOSES OTHER THAN THOSE FOR WHICH IT WAS FURNISHED WITHOUT WRITTEN PERMISSION OF McElroy Manufacturing, Inc.



TYPICAL CLAMPING DETAIL  
 USING A4812608 CLAMP KIT



VIEW A-A

**#1236 STUB END HOLDER ASSEMBLY**Parts List

ITEM	PART NO.	QTY.	DESCRIPTION
	<b>3606901</b>		<b>ASSEMBLY</b>
1	A4812608	1	24/36/48 STUB END CLAMP KIT
2	3606903	1	STUB END HOLDER
3	3614201	3	REST BUTTON SPACER
4	3614401	4	CLAMP BLOCK
5	805703	4	CLAMP SCREW
6	MAB00035	8	5/16-18NC x 1-1/2 LG. HHCS
7	MJM00003	40	KEENSERT

**NOTES:**

1. INSTALL IN INNER MOVEABLE JAW ONLY.

## DRAWING REVISION HISTORY LISTING

**PART NO:** 3606901

**DESCRIPTION:** #1236 STUB END HOLDER ASSEMBLY

<u>APPR.</u>	<u>REV</u>	<u>DATE</u>	<u>BY</u>	<u>DESCRIPTION OF REVISION</u>
SWB	S	9/16/97	BB	REDRAWN TO 'A' SIZE FORMAT. PLACED WELDMENT 3606902 ON SHEET 2. PLACED MACHINE DRAWING 3606903 ON SHEET 3. PLACED BASE PLATE 3606904 ON SHEET 4.
TLW	T	4/3/01	RLE	REMOVED 3614301 QTY. (8), MAC00098 QTY. (4), MAC00100 QTY. (4) & MAC00102 QTY. (4). REPLACED 4812605 QTY. (4) WITH A4812608 QTY. (1). REVISION TO USE STANDARD BOLTS & CLAMP ON 24, 36 & 48 STUB END HOLDERS & ALLOW FOR CLAMPING ON ADDITIONAL STUB END SIZES.
SWB	U	9/14/01	RLE	ADDED SIDE VIEW OF CLAMP BLOCK.