

**NOTES:**

1. ITEMS SHOWN IN PARENTHESIS REFLECT QUANTITIES IN A LOCAL GROUP AND MAY NOT INDICATE TOTAL ASSEMBLY QUANTITIES.
2. THIS ITEM IS A SUB-ASSEMBLY ON A SEPARATE DRAWING.
3. SECURE ENDS OF SLEEVING IN STRAIN RELIEF AND CONNECTOR CLAMP.

**TracStar® 500/500 II COACH HEATER ASSEMBLY  
(6"IPS-12"DIPS) 220-240V,50/60HZ,1PH**

Parts List

ITEM	PART NO.	QTY.	DESCRIPTION
	<b>T5008401</b>		<b>ASSEMBLY</b>
1	838007	1	HEATER HANDLE WELDMENT
2	A1242108	1	12 HEATER BUTT PLATE KIT
3	MJJ00009	2	HAND GRIP
4	1242103	1	RIGHT HEATER BODY
5	1242104	1	LEFT HEATER BODY
6	1242105	1	HEATER O.D. SPACER
7	1242106	1	HEATER I.D. SPACER
8	1242201	1	HEATER 240V MICA/FOIL ELEMENT
9	T5008601	2	GUIDE ROD SUPPORT BRACKET
10	T5008602	2	GUIDE ROD SUPPORT BRACKET
11	MAN00036	10	#10-32NF X 7/8"LG FHSCS SS
12	1810905	1	8 HEATER TERMINAL BOX
13	1808102	1	HEATER GASKET
14	MKI00003	1	100 OHM PLATINUM RTD
15	MJK00002	1	THERMOMETER
16	MBA00004	4	#10-24NC FINISHED HEX NUT
17	MBE00004	4	#10 REGULAR SPLIT LOCK WASHER
18	MAN00008	4	#10-24NC X 1" LG SHCS SS
19	MAH00046	8	#10-24 X 1/2"LG SHCS SS
20	MAN00023	19	#8-32NC X 5/16 LG SHCS SS
21	AT5026701	1	HEATER STRIPPER BAR KIT
22	MLK00015	1	1/2" STRAIN RELIEF CONNECTOR
23	1863202	1	STRIPPER BAR BRACKET
24	MLN00402	4	SPACER
25	T5022401	1	LIGHT WEIGHT HEATER CORD
26	1852008	1	LW HEATER TERMINAL ENCLOSURE ADAPTER BRACKET
27	1207302	1	HEATER GASKET
28	MBA00007	2	3/8-16NC FINISHED HEX NUT
29	MBE00007	2	3/8" REGULAR SPLIT LOCK WASHER
30	MAC00095	2	3/8-16NC X 1-1/4"LG SHCS
31	410906	1	DANGER NOT EXPLOSION PROOF TAG LABEL
32	MLN00219	1 FT	FIBERGLASS TAPE
33	MJQ00046	2	FERRULE
34	MJQ00026	2	FERRULE
35	MLM00013	1	CONNECTOR
36	MAH00030	1	#10-24NC X 1/4"LG RHSMS SS
37	1852017	1	.004" THICK SHIM
38	1852018	1	.018" THICK SHIM
39	T5008310	1	TracStar 500 II HEATER BAG & FRAME ASSEMBLY
40	MLW00019	20 FT	1/2" SS BRAIDED SLEEVING

## DRAWING REVISION HISTORY LISTING

<b>PART NO:</b>	T5008401			
<b>DESCRIPTION:</b>	TracStar 500/500 II COACH HEATER ASSEMBLY (6"IPS-12"DIPS) 220-240V, 50/60Hz, 1Ph			
<b><u>APPR.</u></b>	<b><u>REV</u></b>	<b><u>DATE</u></b>	<b><u>BY</u></b>	<b><u>DESCRIPTION OF REVISION</u></b>
SWB	-	08/25/99	TLW	CORRECTED HEATER STRIPPER BAR KIT ITEM #31 AT5008101 TO AT5026701.
SWB	-	04/17/00	TLW	REVISED ITEM #5 MAN00016 #10-32NF X 3/4 LG FHSCS SS TO MAN00036 # 10-32NF X 7/8 LG FHSCS SS. DUE TO STACK-UP OF TOLERANCES, MAN00016 COULD BE TOO SHORT.
RAD	A	09/14/01	BWW	REVISED TO CHANGE ITEM 14 FROM MLM00002 TO MJQ00046 AND ITEM 15 FROM MLM00010 TO MJQ00026, ALSO ADDED ITEM 39 MLN00219 TO IMPROVE TEMPERATURE RESISTANCE OF WIRE SPLICES.
BWJ	B	04/11/02	BWW	REVISED TO UPDATE DESCRIPTION TO INCLUDE T500 II COACH MACHINE AND UPDATE ITEM 29 TO NEW DESIGN.
SWB	C	09/19/05	BWW	CREATED EXPLODED ISOMETRIC VIEW AND ADDED NOTES TO DRAWING FOR CLARITY. CHANGED MLK00022 TO MLK00015 FOR EASE OF ASSEMBLY AND T5008501 TO 1863202 FOR NEW DESIGN. RENUMBERED DRAWING TO BE CONSISTENT WITH OTHER HEATER ASSEMBLIES. ADDED ITEM 37 1852017 QTY 1 AND 38 1852018 QTY 1 TO MATCH AS BUILT CONDITION. ADDED ITEM 39 T5008310 WHICH WAS LEFT OFF OF DRAWING AT CREATION.
JRP	D	01/18/06	BEA	ADDED ITEM 40, BRAIDED SLEEVING, AND NOTE 3 TO PROTECT CABLE JACKET.

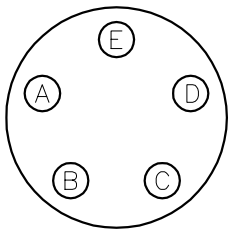
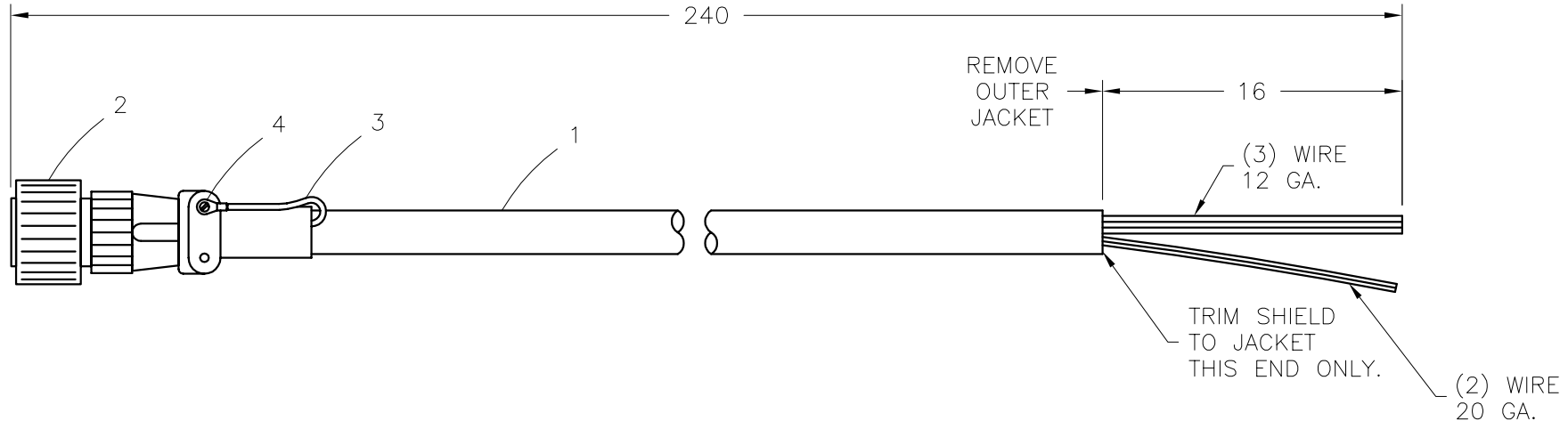


**McElroy Manufacturing, Inc.**  
 The leader by design.  
 Tulsa, Oklahoma U.S.A.

DRAWN: JPS	CHECK: BEA	APPRV'D: RAD	DATE: 12/15/97	DWG No: T5022400	SHT No: 1	REV No: C	PART No: T5022401
LIGHT WEIGHT HEATER CORD							CAD No: T5022401

NOTE: THIS DRAWING AND THE INFORMATION CONTAINED THEREIN IS THE CONFIDENTIAL AND PROPRIETARY PROPERTY OF McElroy Manufacturing, Inc. THE DRAWING IS NOT TO BE REPRODUCED IN ANY MANNER, SUBMITTED OUTSIDE PARTIES FOR EXAMINATION, OR USED DIRECTLY OR INDIRECTLY FOR THE PURPOSES OTHER THAN THOSE FOR WHICH IT WAS FURNISHED WITHOUT WRITTEN PERMISSION OF McElroy Manufacturing, Inc.

NOTES:  
 1. SOLDER WIRE, (ITEM #3) TO SHIELD INSIDE THE BACKSHELL OF ITEM #2.



BACK VIEW

GA.	CABLE COLOR	PIN#
12GA.	WHITE	A
12GA.	BLACK	B
12GA.	GREEN	C
20GA.	BLACK	D
20GA.	WHITE	E

UNLESS NOTED OTHERWISE: (3) PLC. DIM'S .XXX = ±0.005" (2) PLC. DIM'S .XX = ±0.010" FRACTIONAL DIM'S = ±1/32" ANGULAR DIM'S = ±1/4" REMOVE ALL BURRS BREAK ALL SHARP EDGES STAMP OR ETCH P/N ON ALL DETAIL PARTS

MMI NUMBER	ITEM	QTY.	SIZE AND DESCRIPTION

**LIGHT WEIGHT HEATER CORD**Parts List

ITEM	PART NO.	QTY.	DESCRIPTION
	<b>T5022401</b>		<b>ASSEMBLY</b>
1	841303	20FT	12/3 POWER CORD WITH TWISTED PAIR
2	MQF00199	1	5 POS. BAYONET PLUG
3	MLL00046	6IN.	#16 WIRE, GREEN
4	MLM00007	1	RING TERMINAL

## DRAWING REVISION HISTORY LISTING

**PART NO:** T5022401  
**DESCRIPTION:** LIGHT WEIGHT HEATER CORD

<u>APPR.</u>	<u>REV</u>	<u>DATE</u>	<u>BY</u>	<u>DESCRIPTION OF REVISION</u>
RAD	A	03/05/98	JPS	REMOVED ITEM #5 (MJQ00046) FERRULE.
BEA	B	04/02/98	TLW	REVISED ITEM #4 (MLM00144) TO (MLM00007) AND CHANGED BOM QTY. FROM INCHES TO FEET TO MATCH AS400.
SWB	C	11/28/05	JAB	MOVED PARTS LIST FROM FACE OF DRAWING TO PARTS LIST.



**McElroy Manufacturing, Inc.**  
 The leader by design.  
 Tulsa, Oklahoma U.S.A.

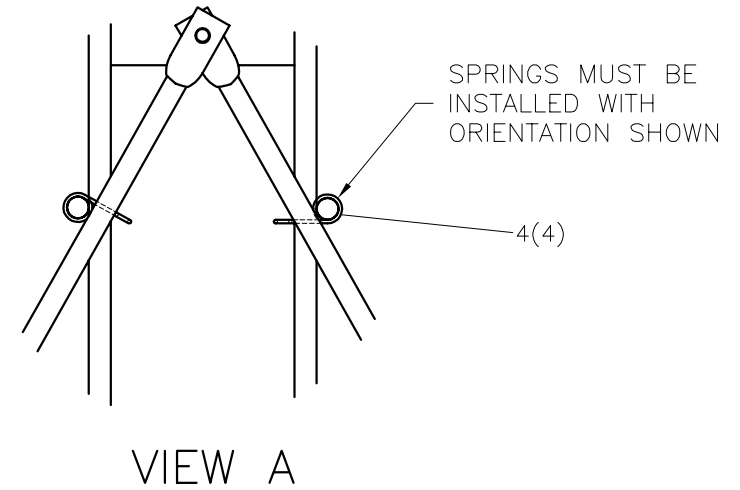
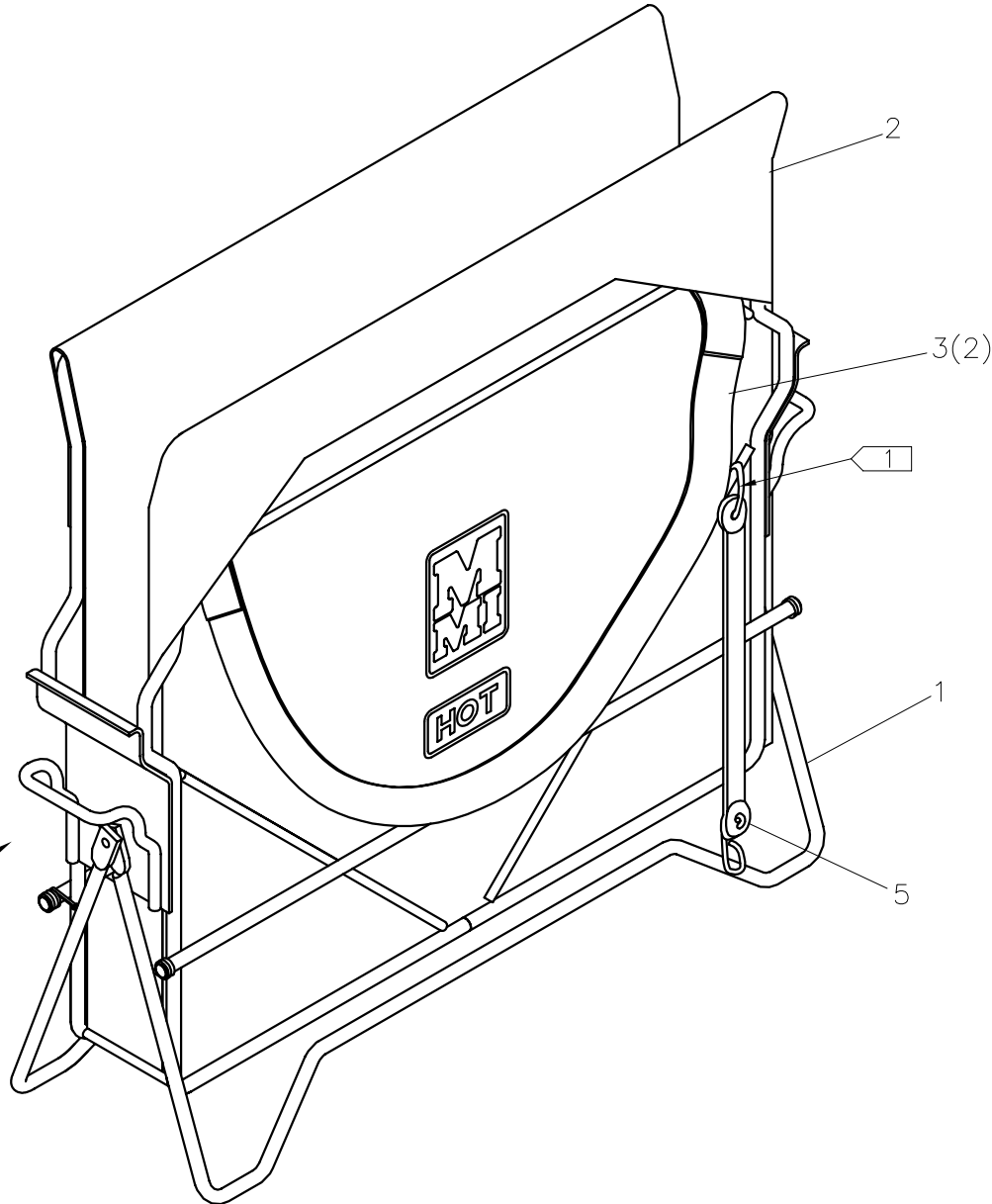
DRAWN: BWW	CHECK: BWJ	APPR'D: JRP	DATE: 03/18/02	SHT No: 10	REV No: B	PART No: T5008310
------------	------------	-------------	----------------	------------	-----------	-------------------

TracStar® 500 II HEATER BAG AND FRAME ASSEMBLY

NOTE: THIS DRAWING AND THE INFORMATION CONTAINED THEREIN IS THE CONFIDENTIAL AND PROPRIETARY PROPERTY OF McElroy Manufacturing, Inc. THE DRAWING IS NOT TO BE REPRODUCED IN ANY MANNER, SUBMITTED OUTSIDE PARTIES FOR EXAMINATION, OR USED DIRECTLY OR INDIRECTLY FOR THE PURPOSES OTHER THAN THOSE FOR WHICH IT WAS FURNISHED WITHOUT WRITTEN PERMISSION OF McElroy Manufacturing, Inc.

NOTES:

1. CLOSE LOOP THIS HOOK ONLY.



**TracStar® 500 II HEATER BAG AND FRAME ASSEMBLY**Parts List

ITEM	PART NO.	QTY.	DESCRIPTION
	<b>T5008310</b>		<b>ASSEMBLY</b>
1	T5008311	1	TracStar® 500 II HEATER BAG AND FRAME ASSEMBLY
2	1835301	1	INSULATED HEATER BAG
3	T5026401	2	HEATER BAG CARRYING STRAP
4	1835208	4	LEG RETAINER SPRING
5	MJQ00001	1	RUBBER BUNGEE CORD

## DRAWING REVISION HISTORY LISTING

**PART NO:** T5008310

**DESCRIPTION:** TracStar 500 II HEATER BAG AND FRAME ASSEMBLY

<u>APPR.</u>	<u>REV</u>	<u>DATE</u>	<u>BY</u>	<u>DESCRIPTION OF REVISION</u>
SWB	A	01/17/03	BWW	REVISED TO ADD ITEM 4 1835208 QTY 4 AND ITEM 5 MJG00001 QTY 1. PARTS ADDED FOR CONSISTENCY BETWEEN OTHER BAG FRAMES.
SWB	B	10/21/05	BWW	REMOVED PARTS LIST FROM DRAWING FACE PER PARTS FINDER PROJECT. ADDED NOTE 1 FOR CONSISTENCY.