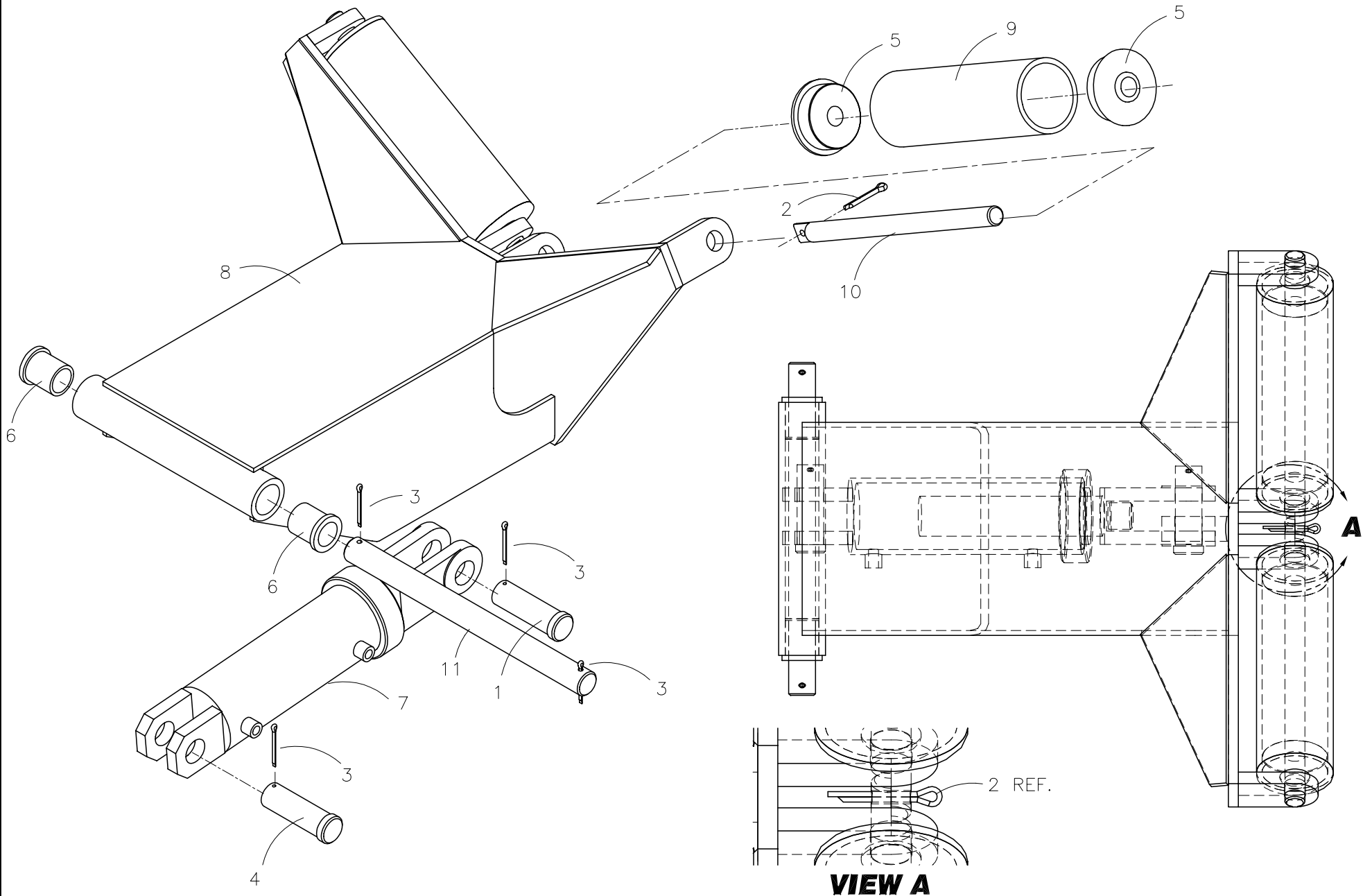




McElroy Manufacturing, Inc.
The leader by design.
Tulsa, Oklahoma U.S.A.

DRAWN: AH	CHECK: DWP	APPRV'D: B	DATE: 2/16/98	DWG No: T5004500	SHT No: 1	REV No: B	PART No: T5004501
TracStar 500 PIPE LIFT ASSEMBLY							CAD No: T5004501

NOTE: THIS DRAWING AND THE INFORMATION CONTAINED THEREIN IS THE CONFIDENTIAL AND PROPRIETARY PROPERTY OF McElroy Manufacturing, Inc. THE DRAWING IS NOT TO BE REPRODUCED IN ANY MANNER, SUBMITTED OUTSIDE PARTIES FOR EXAMINATION, OR USED DIRECTLY OR INDIRECTLY FOR THE PURPOSES OTHER THAN THOSE FOR WHICH IT WAS FURNISHED WITHOUT WRITTEN PERMISSION OF McElroy Manufacturing, Inc.



TracStar 500 PIPE LIFT ASSEMBLYParts List

ITEM	PART NO.	QTY.	DESCRIPTION
	T5004501	1	ASSEMBLY
1	MCF00022	1	1" DIA x 2-51/64" LG CLEVIS PIN
2	MCH00003	1	3/16" DIA X 1-1/2"LG COTTER PIN
3	MCH00002	4	1/8" DIA X 1-1/2"LG COTTER PIN
4	MCF00023	1	1" DIA x 2-5/16" LG CLEVIS PIN
5	MDM00271	4	ROLLER END BEARING
6	MDM00272	2	FLANGE BEARING
7	MEB00109	1	2-1/2"B X 4"S X 1-3/8"R HYD. CYLINDER
8	T5005501	1	PIPE LIFT WELDMENT
9	T5005601	2	PIPE LIFT ROLLER
10	T5005701	2	PIPE LIFT ROLLER SHAFT
11	T5005801	1	PIPE LIFT PIVOT SHAFT

DRAWING REVISION HISTORY LISTING

PART NO: T5004501
DESCRIPTION: TracStar 500 PIPE LIFT ASSEMBLY

<u>APPR.</u>	<u>REV</u>	<u>DATE</u>	<u>BY</u>	<u>DESCRIPTION OF REVISION</u>
DWP	A	5/6/98	AH	REVISED ITEM 1 (MCF00022) QTY OF 2 TO QTY OF 1 ADDED ITEM 4 (MCF00023) QTY OF 1.
DWP	B	10/26/98	AH	DELETED ITEM #2(MCG00008) ROLL PIN, AND REPLACED IT WITH (MCH00003) QTY OF 1