

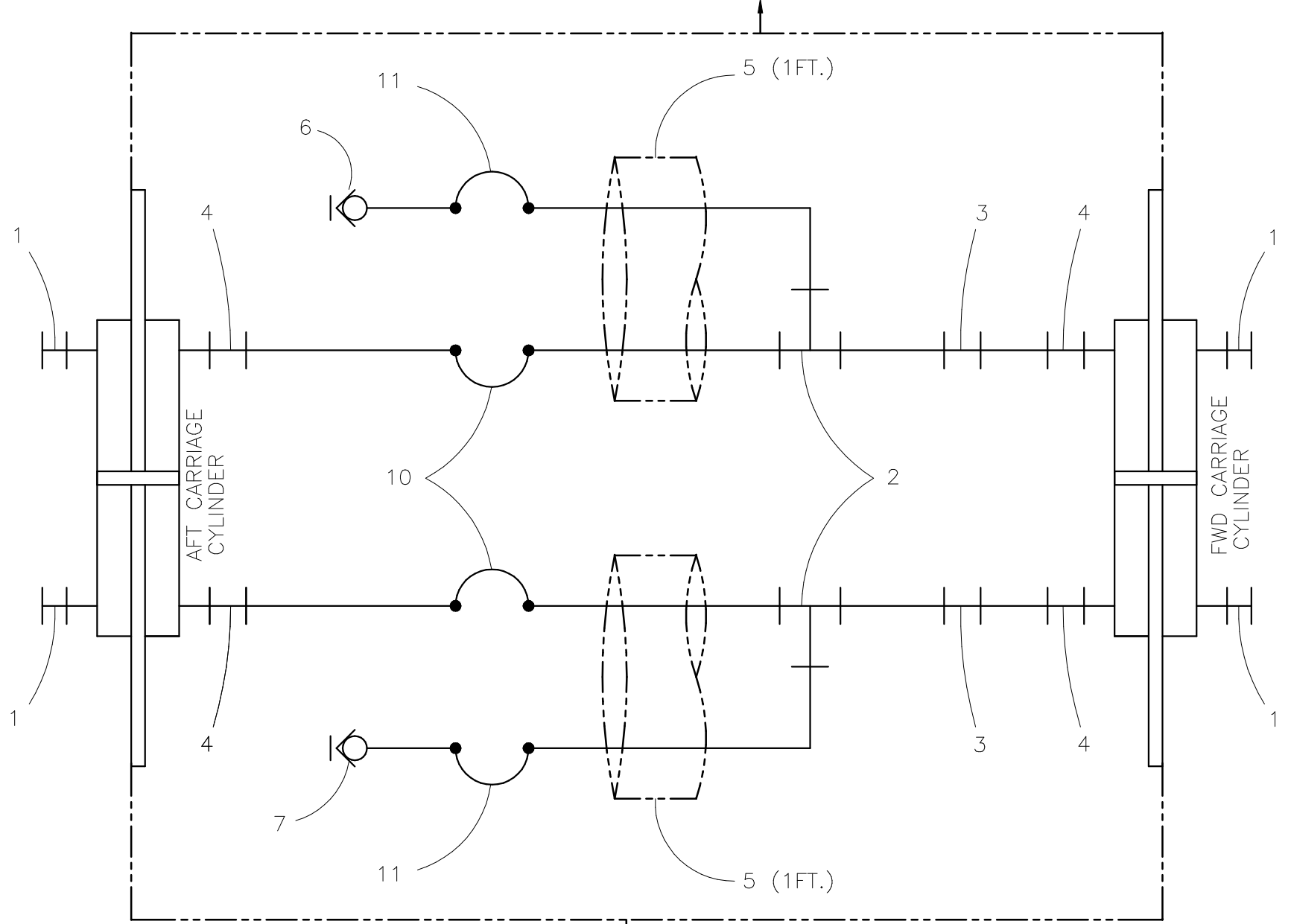


**McElroy Manufacturing, Inc.**  
 The leader by design.  
 Tulsa, Oklahoma U.S.A.

DRAWN: RLE	CHECK: DWP	APPRV'D: JRP	DATE: 03/11/98	DWG No: T5001000	SHT No: 1	REV No: B	PART No: T5001001
TracStar 500 CARRIAGE HYDRAULIC/PLUMBING SCHEMATIC							CAD No: T5001001

NOTE: THIS DRAWING AND THE INFORMATION CONTAINED THEREIN IS THE CONFIDENTIAL AND PROPRIETARY PROPERTY OF McElroy Manufacturing, Inc. THE DRAWING IS NOT TO BE REPRODUCED IN ANY MANNER, SUBMITTED OUTSIDE PARTIES FOR EXAMINATION, OR USED DIRECTLY OR INDIRECTLY FOR THE PURPOSES OTHER THAN THOSE FOR WHICH IT WAS FURNISHED WITHOUT WRITTEN PERMISSION OF McElroy Manufacturing, Inc.

GUIDE ROD SUPPORT PLATE SIDE



INNER FIXED JAW SIDE

## TracStar 500 CARRIAGE HYDRAULIC/PLUMBING SCHEMATIC

### Parts List

ITEM	PART NO.	QTY.	DESCRIPTION
	<b>T5001001</b>		<b>ASSEMBLY</b>
1	MFA00001	4	1MPT PLUG
2	MFB00018	2	6MJIC/6MJIC/6FSJIC TEE
3	MFB00191	2	6MJIC/6FSJIC 45 ELBOW
4	MFC00078	4	6MSAE/6MJIC ADAPTER
5	MFL00037	2FT.	HOSE SLEEVE
6	MFH00001	1	1/4FNPT QUICK DISC COUPLER
7	MFH00002	1	1/4FNPT QUICK DISC NIPPLE

### **NOTES:**

1. FOR HOSE ASSEMBLIES (ITEMS 10 & LARGER) SEE CARRIAGE HOSE KIT #AT5001002.
2. USE LOCTITE HYDRAULIC SEALANT ON ALL PIPE THREADS - **DO NOT USE** TEFLON TAPE.

## DRAWING REVISION HISTORY LISTING

**PART NO:** T5001001

**DESCRIPTION:** TracStar 500 CARRIAGE HYDRAULIC/PLUMBING SCHEMATIC

<u>APPR.</u>	<u>REV</u>	<u>DATE</u>	<u>BY</u>	<u>DESCRIPTION OF REVISION</u>
DP	A	03/18/98	RLE	ADDED 'INNER FIXED JAW' & 'GUIDE ROD SUPPORT PLATE' CALLOUTS TO CLARIFY POSITIONING OF QUICK DISCONNECTS.
TLW	B	7/7/99	DJL	COMBINED T5001001 & T5001002 HYDRAULIC & PLUMBING SCHEMATICS PER TECH DEPARTMENT TO ELIMINATE CONFUSION. RENUMBERED ITEMS 1 & 2 TO ITEMS 6 & 7 MFH00001 & MFH00002.

**TracStar 500 CARRIAGE HOSE KIT**Parts List

ITEM	PART NO.	QTY.	DESCRIPTION
	<b>AT5001002</b>		<b>ASSEMBLY</b>
10	HBBDCD030	2	HOSE ASSEMBLY OAL 30"
11	HBABDD037	2	HOSE ASSEMBLY OAL 37"

**NOTES:**

1. SEE CARRIAGE PLUMBING SCHEMATIC #T5001001 FOR LOCATION OF ITEM NUMBERS.