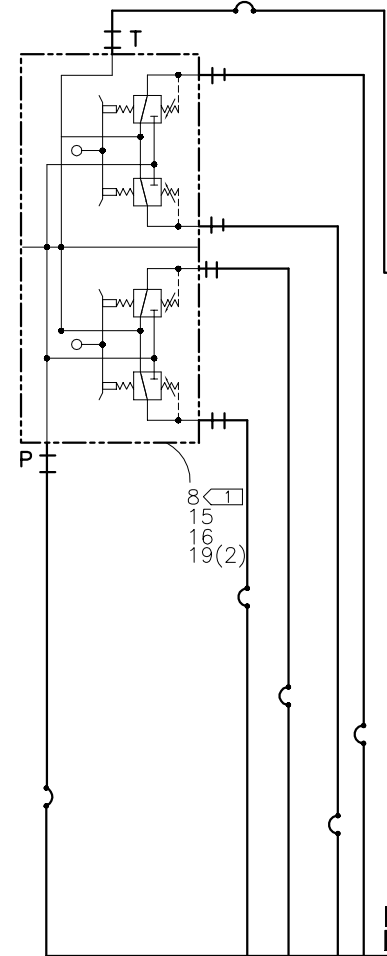




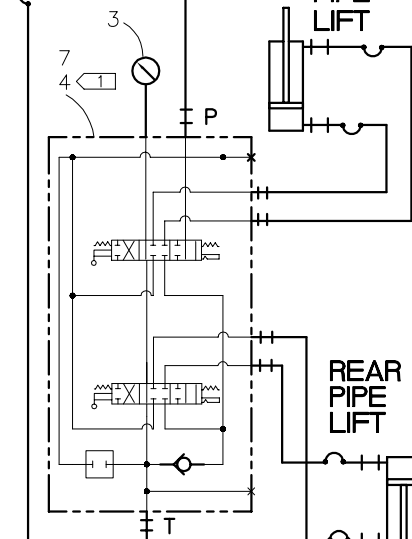
NOTE: THIS DRAWING AND THE INFORMATION CONTAINED THEREIN IS THE CONFIDENTIAL AND PROPRIETARY PROPERTY OF McElroy Manufacturing, Inc. THE DRAWING IS NOT TO BE REPRODUCED IN ANY MANNER, SUBMITTED OUTSIDE PARTIES FOR EXAMINATION, OR USED DIRECTLY OR INDIRECTLY FOR THE PURPOSES OTHER THAN THOSE FOR WHICH IT WAS FURNISHED WITHOUT WRITTEN PERMISSION OF McElroy Manufacturing, Inc.

SEE FACER HYD. SCHEMATIC T5001101
SEE HYD./PLUMBING RESERVOIR SCHEMATIC T5014501

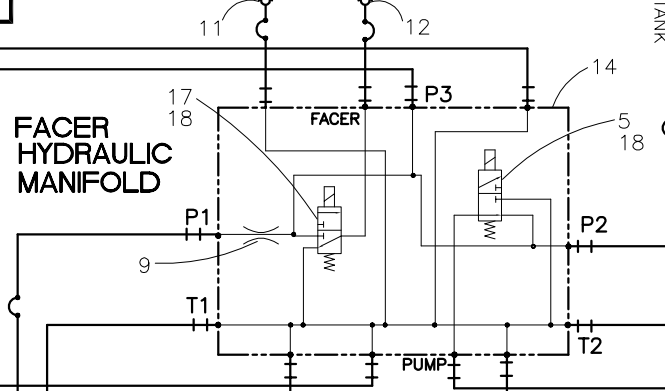
AUXILIARY TRACK REDUCING VALVE



PIPE LIFT DIRECTIONAL VALVE

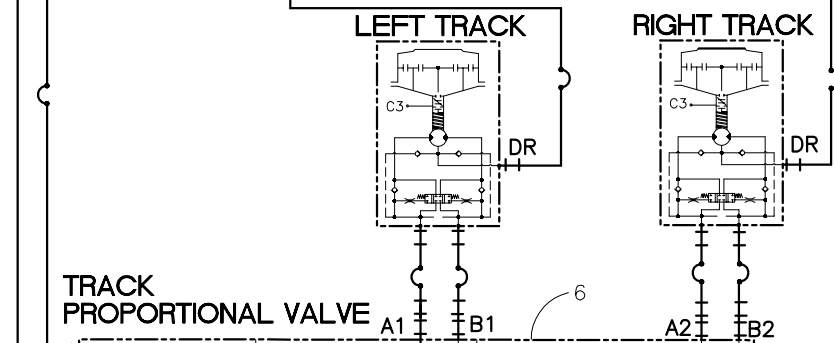


FACER HYDRAULIC MANIFOLD

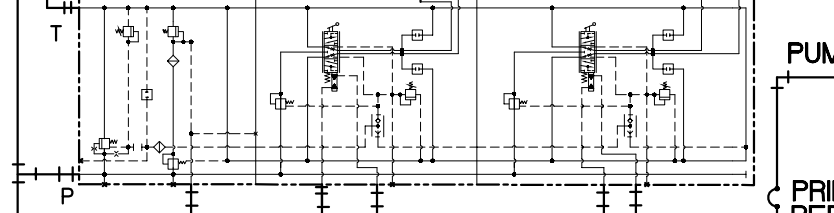


LEFT TRACK

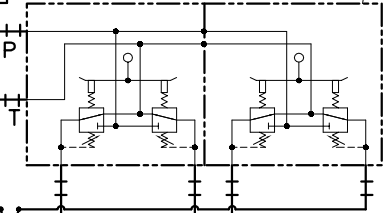
RIGHT TRACK



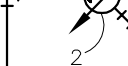
TRACK PROPORTIONAL VALVE



PRIMARY TRACK REDUCING VALVE MOD



PUMP



OIL COOLER



10

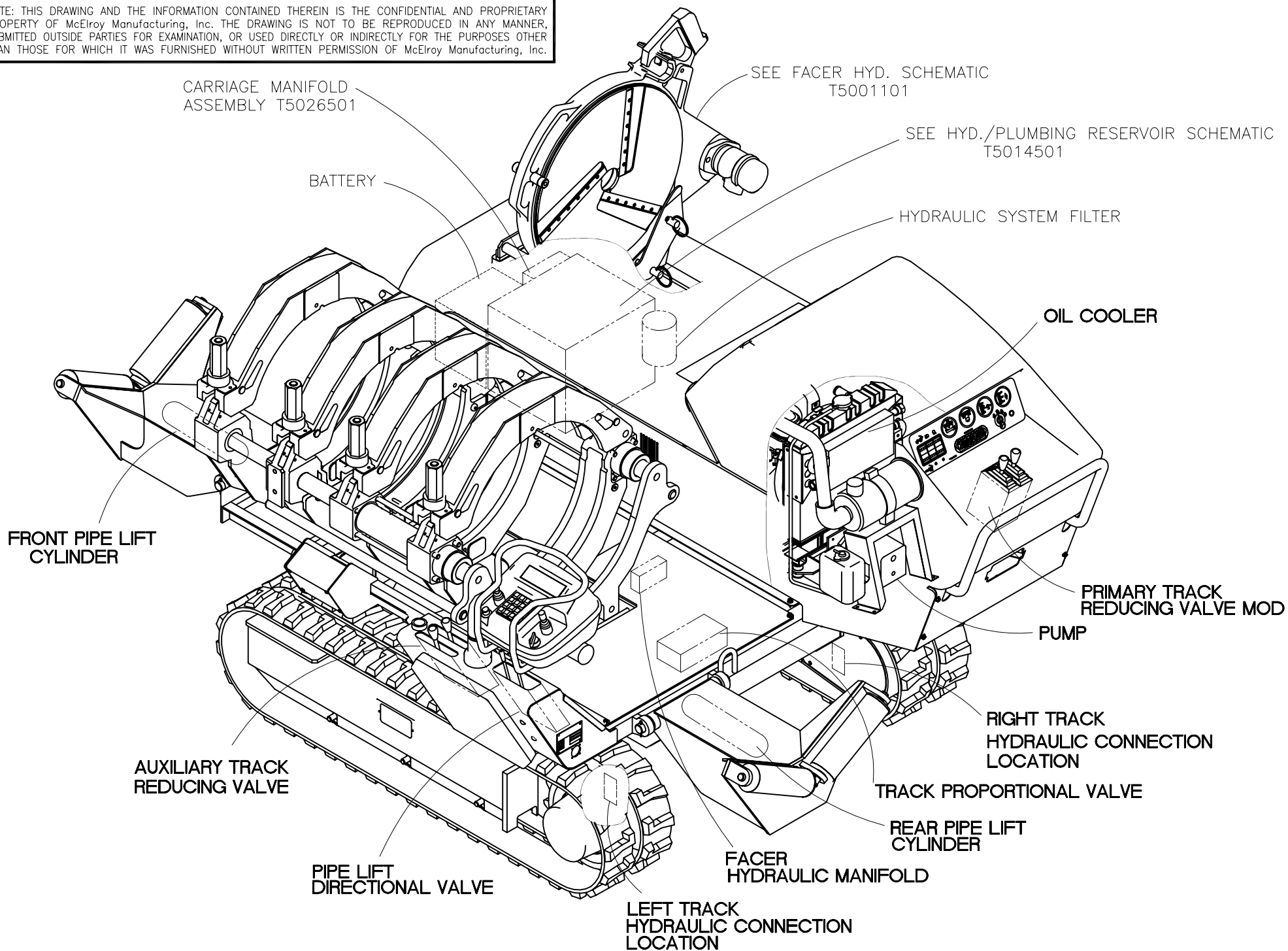
1(2)
8
10
6



McElroy Manufacturing, Inc.
 The leader by design.
 Tulsa, Oklahoma U.S.A.

DRAWN: RLE	CHECK: DWP	APPRV'D: B	DATE: 02/17/98	DWG No: T5000900	SHT No: 1B	REV No: J	PART No: T5000901
TracStar 500 VEHICLE HYDRAULIC SCHEMATIC							CAD No: T5000901

NOTE: THIS DRAWING AND THE INFORMATION CONTAINED THEREIN IS THE CONFIDENTIAL AND PROPRIETARY PROPERTY OF McElroy Manufacturing, Inc. THE DRAWING IS NOT TO BE REPRODUCED IN ANY MANNER, SUBMITTED OUTSIDE PARTIES FOR EXAMINATION, OR USED DIRECTLY OR INDIRECTLY FOR THE PURPOSES OTHER THAN THOSE FOR WHICH IT WAS FURNISHED WITHOUT WRITTEN PERMISSION OF McElroy Manufacturing, Inc.



TracStar 500 HYDRAULIC SCHEMATICParts List

ITEM	PART NO.	QTY.	DESCRIPTION
	T5000901		ASSEMBLY
1	T5007602	2	LEVER MODIFICATION
2	MEA00055	1	PUMP
3	MEE00019	1	PRESSURE GAUGE
4	MEF00077	2	VALVE HANDLE LEVER
5	MEF00096	1	THREE WAY VALVE
6	MEF00094	1	PROPORTIONAL VALVE
7	MEF00095	1	DIRECTIONAL VALVE
8	MEG00022	2	REDUCING VALVE
9	T5019901	1	MANIFOLD ORIFICE
10	MEJ00030	4	SHUTTLE VALVE
11	MFH00003	1	3/8" FPT QUICK DISCONNECT COUPLING
12	MFH00004	1	3/8" FPT QUICK DISCONNECT NIPPLE
13	MJQ00344	1	OIL COOLER
14	T5007801	1	FACER HYDRAULIC MANIFOLD
15	MAH00172	4	1/4-20NC x 3/4 LG HHFCS
16	MBC00054	4	1/4-20NC PREVAILING TORQUE FLANGE LOCK NUT
17	MEF00102	1	THREE WAY VALVE
18	MEF00101	2	30 WATT SOLENOID
19	MEG00026	2	LEVER HANDLE FOR MEG00022

NOTES:

1. VALVE HANDLE LEVERS MEF00077, MEG00026, OR T5007602 MUST BE PURCHASED SEPARATELY.

DRAWING REVISION HISTORY LISTING

PART NO: T5000901
DESCRIPTION: TracStar 500 VEHICLE HYDRAULIC SCHEMATIC

<u>APPR.</u>	<u>REV</u>	<u>DATE</u>	<u>BY</u>	<u>DESCRIPTION OF REVISION</u>
DWP	-	3/24/98	TLW	REVISED OIL COOLER ITEM #13 FROM (MJQ00343) TO (MJQ00344).
DWP	A	05/13/98	RLE	REVISED ITEM #5 MEF00093 TO MEF00096, ITEM #9 MEJ00029 TO T5019901 & ADDED ITEM #14 T5007801 QTY (1). THESE REVISIONS MADE FOR NEW MANIFOLD, T5007801, & NEW HINGE WELDMENT, T5015201.
TLW	-	06/30/98	RLE	UPDATED PICTORIALY TO AGREE WITH PLUMBING SCHEMATIC.
WAB	B	07/21/98	RLE	ADDED ITEM #15 MAH00172 QTY (4) & ITEM #16 MBC00054 QTY (4).
DWP	C	11/25/98	AH	ADDED ITEM #17(MEF00102) QTY 1 AND CHANGED ITEM #5(MEF00096) QTY 2 TO QTY 1.
DWP	D	12/07/98	RLE	ADDED ITEM #18, MEF00101 30 WATT SOLENOID, QTY. (2).
DWP	E	6/3/99	MRP	REVISED ITEM #7 MEF00095 FROM A SPRING CENTERED VALVE TO A SPRING CENTERED VALVE WITH DETENT IN DOWN POSITION TO PREVENT BLEED OFF PRESSURE FROM RAISING PIPE LIFT. CREATED REPLACEMENT VALVE VALVE BOX LEVER MEF00114 FOR ALL UNITS PRIOR TO THIS REVISION.
SWB	F	7/28/99	DJL	REVISED VEHICLE HYDRAULIC SCHEMATIC ARRANGEMENT TO CLOSER REPRESENT PHYSICAL LAYOUT. ADDED SHEET 1B.
SWB	G	2/15/02	ALK	ADDED NOTE 1 TO CLARIFY VALVE HANDLE LEVERS MUST BE PURCHASED SEPARATELY.
SWB	H	05/01/02	BWW	REVISED TO CHANGE ITEM 1 FROM T5007601 TO T5007602 AND REVISE QUANTITY OF ITEM 8 MEG00022 TO 2. REVISED NOTE 1 ACCORDINGLY. CHANGES MADE TO ALLOW FOR PURCHASE OF LEVERS SEPERATELY.
SWB	J	01/14/03	BWW	REVISED TO ADD ITEM 19 MEG00026 QTY 2 FOR AUXILARY TRACK REDUCING VALVE. LEFT OF OF DRAWING AT REV. H.