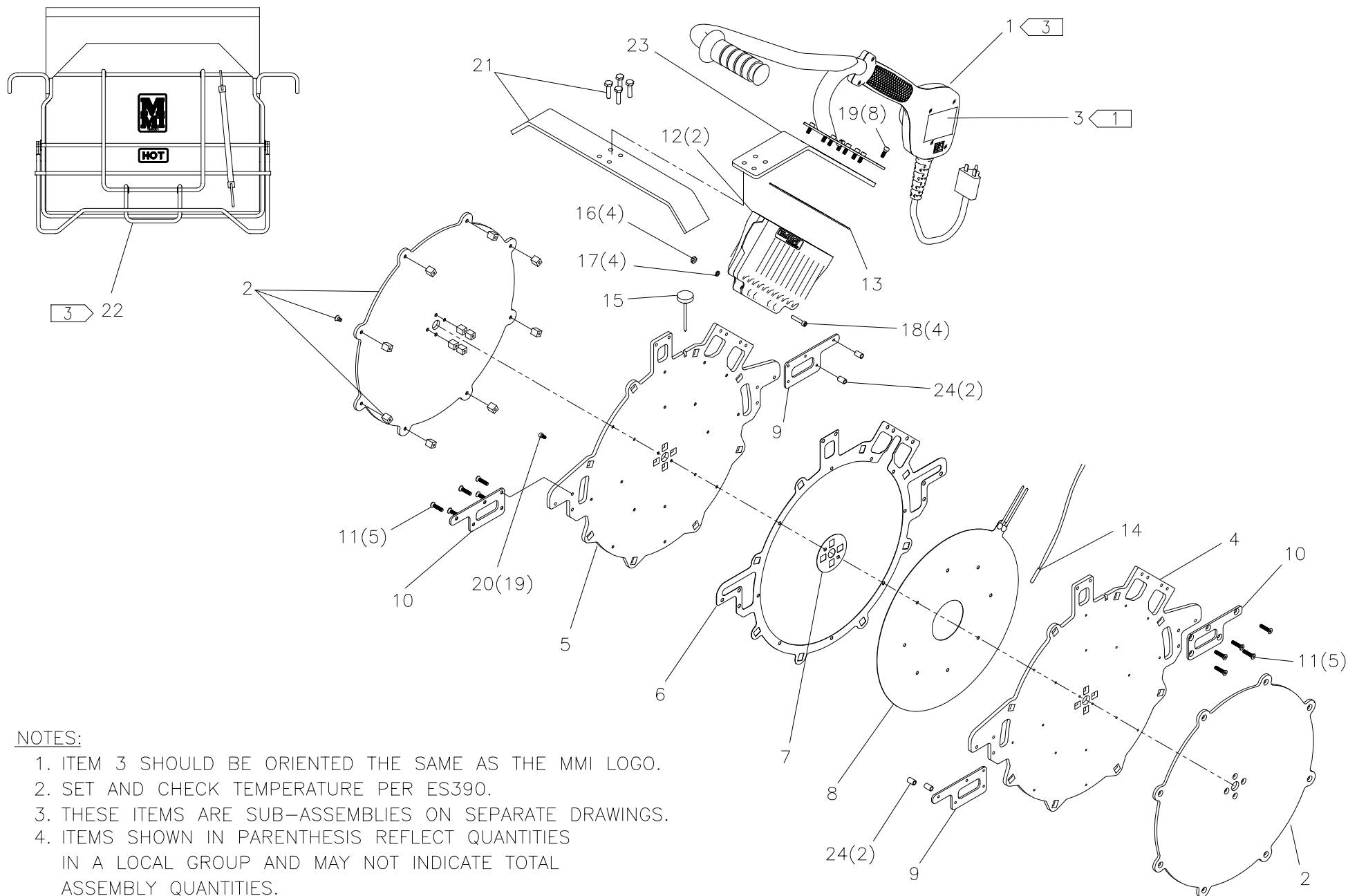




NOTE: THIS DRAWING AND THE INFORMATION CONTAINED THEREIN IS THE CONFIDENTIAL AND PROPRIETARY PROPERTY OF McElroy Manufacturing, Inc. THE DRAWING IS NOT TO BE REPRODUCED IN ANY MANNER, SUBMITTED OUTSIDE PARTIES FOR EXAMINATION, OR USED DIRECTLY OR INDIRECTLY FOR THE PURPOSES OTHER THAN THOSE FOR WHICH IT WAS FURNISHED WITHOUT WRITTEN PERMISSION OF McElroy Manufacturing, Inc.



NOTES:

1. ITEM 3 SHOULD BE ORIENTED THE SAME AS THE MMI LOGO.
2. SET AND CHECK TEMPERATURE PER ES390.
3. THESE ITEMS ARE SUB-ASSEMBLIES ON SEPARATE DRAWINGS.
4. ITEMS SHOWN IN PARENTHESIS REFLECT QUANTITIES IN A LOCAL GROUP AND MAY NOT INDICATE TOTAL ASSEMBLY QUANTITIES.

#618 HEATER ASSEMBLY (6"/12") 220-240V, 50/60Hz, 1PhParts List

ITEM	PART NO.	QTY.	DESCRIPTION
	1855502		ASSEMBLY
1	1862601	1	8"-18" 220-240V, 50/60Hz, 1Ph HEATER HANDLE/CONTROLLER ASSEMBLY
2	A1242108	1	12 HEATER BUTT PLATE KIT
3	816397	1	MODEL 1855502 PART NO. LABEL
4	1242103	1	RIGHT HEATER BODY
5	1242104	1	LEFT HEATER BODY
6	1242105	1	HEATER O.D. SPACER
7	1242106	1	HEATER I.D. SPACER
8	1242201	1	240V MICA/FOIL HEATER ELEMENT
9	1852014	2	HEATER GUIDE ROD SUPPORT BRACKET
10	1852015	2	HEATER GUIDE ROD SUPPORT BRACKET
11	MAN00036	10	#10-32NF X 7/8" LG FHSCS SS
12	1863102	2	HEATER TERMINAL ENCLOSURE HALF
13	1808102	1	HEATER GASKET
14	MKI00003	1	100 OHM PLATINUM RTD
15	MJK00002	1	THERMOMETER
16	MBA00004	4	#10-24NC FINISHED HEX NUT
17	MBE00004	4	#10 REGULAR SPLIT LOCK WASHER
18	MAN00008	4	#10-24NC X 1" LG SHCS SS
19	MAH00046	8	#10-24NC X 1/2" LG SHCS SS
20	MAN00023	19	#8-32NC X 5/16" LG SHCS SS
21	A1818803	1	6"/12" HEATER STRIPPER BAR KIT
22	1835102	1	HEATER BAG ASSEMBLY
23	1863201	1	STRIPPER BAR BRACKET
24	MLN00402	4	SPACER

DRAWING REVISION HISTORY LISTING

PART NO: 1855502
DESCRIPTION: #618 HEATER ASSEMBLY (6"/12") 220-240V, 50/60Hz, 1Ph

<u>APPR.</u>	<u>REV</u>	<u>DATE</u>	<u>BY</u>	<u>DESCRIPTION OF REVISION</u>
SWB	A	04/28/03	BWW	ADDED ITEM 50 MLN00219 WITH A QTY OF 4IN & ADDED NOTE 7 FOR TAPING WIRES. ADDED LENGTH TOLERANCE TO LEAD CUT LENGTH DETAIL. UPDATED PICTORIALY ITEM 30 TO NEW DESIGN WHICH WAS IMPLEMENTED MARCH 2003.
SWB	B	8/15/03	RLE	REVISED STRIP LENGTH ON RTD ONLY FROM 3/16 TO 3/8 TO MAKE COMPATIBLE WITH CONNECTOR USED ON REV. 'B' HEATER CONTROL PCB ASSEMBLY (T5030001) & UPDATED PICTURE OF HEATER CONTROL PCB ASSEMBLY.
SWB	C	10/27/03	BWW	CORRECTED PICTORIALY THE VIEW OF THE PCB BOARD ON SHT 2C AND 2D TO SHOW CURRENT DESIGN.
SWB	D	03/17/04	ALK	REVISED DRAWING TO REMOVE ITEMS 2 MAC00095, 7 MBA00007, 9 MBE00007, 17 1207302, 26 1810902, & 27 1852008. CHANGED ITEM 49 1818804 TO 1863201 AND ADDED ITEM 51 1863102 QTY 2. CHANGE MADE TO IMPLEMENT USE OF DIE CAST TERMINAL ENCLOSURE.
WBD	E	3/22/04	ALK	REMOVED ITEMS #13 1852017 & #14 1852018, REVISED TO REMOVE UNNECESSARY SHIMS.
SWB	F	08/02/05	BWW	REVISED PICTORIALY TO SHOW EXPLODED ISOMETRIC VIEW ON SHT 2 & CONSOLIDATED ALL TO 1 SHEET. ADDED 1862601 HANDLE ASSEMBLY. REMOVED THE FOLLOWING ITEMS: 3 MAH00030, 10 MJJ00009, 15 1854801, 16 MDL00243, 30 838007, 31 410906, 34 816382, 36 T5030103, 37 T5030001, 38 T5030002, 39 MBA00067, 40 MJJ00023, 41 MLM00010, 42 MLM00024, 43 MAL00010, 44 MAL00011, 45 MDL00018, 46 MLL00025, 47 MBG00072 AND 50 MLN00219 WHICH WERE CONSOLIDATED IN 1862601.

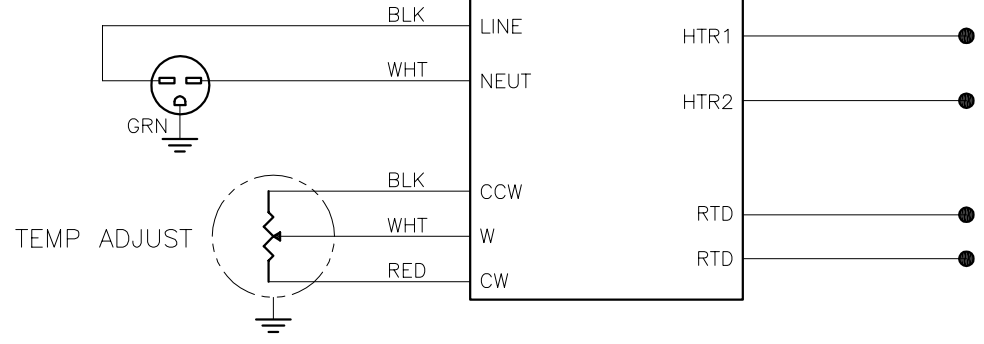


McElroy Manufacturing, Inc.
 The leader by design.
 Tulsa, Oklahoma U.S.A.

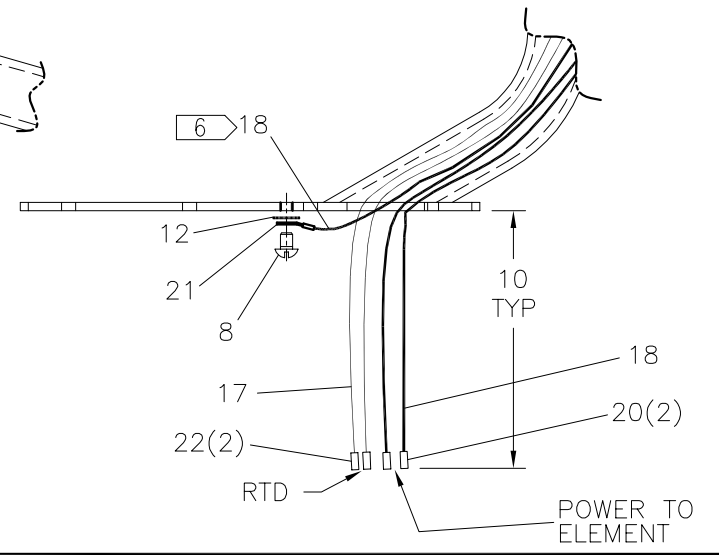
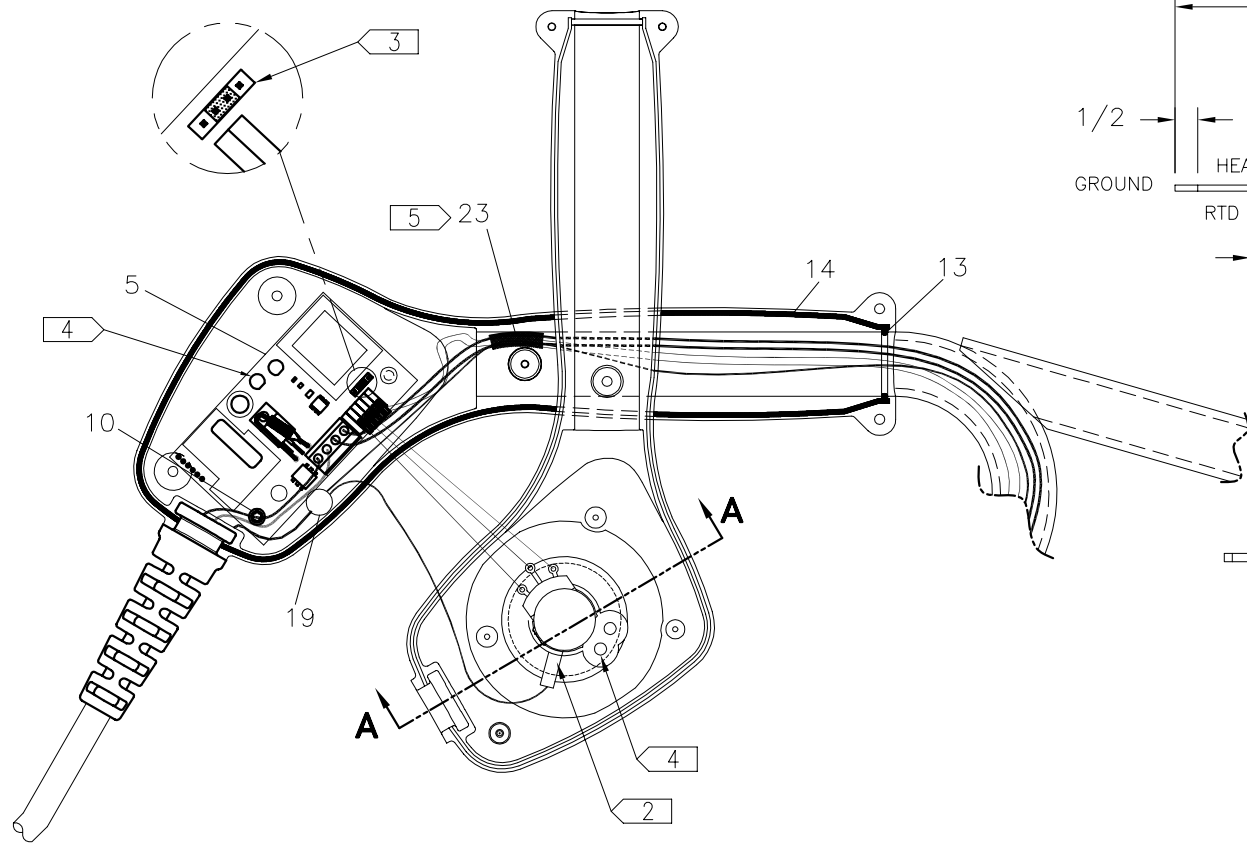
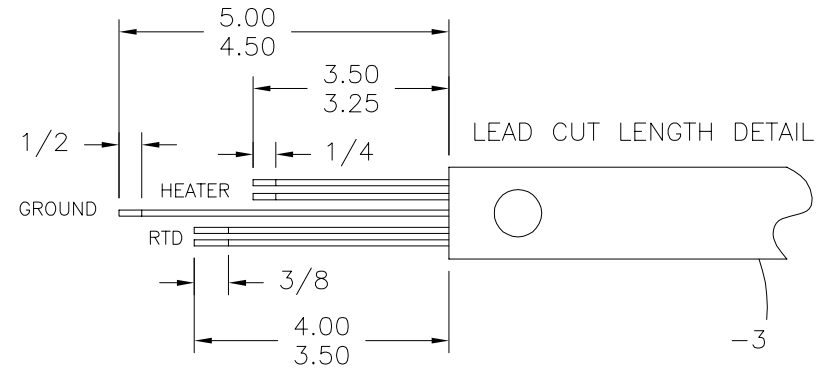
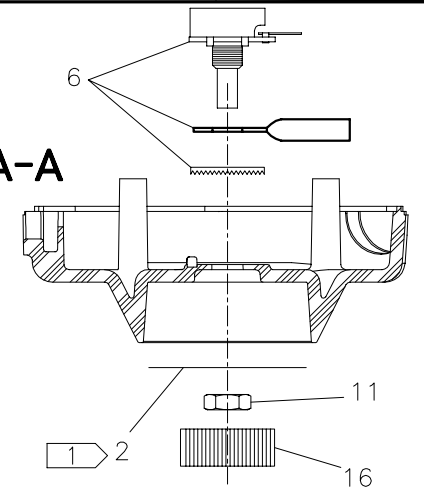
DRAWN: BWW	CHECK: TMT	APPRV'D: SWB	DATE: 06/14/02	DWG No: 1862600	SHT No: 1B	REV No: D	PART No: 1862601
8"-18" 220-240V,50/60Hz,1Ph HEATER HANDLE/CONTROLLER ASSEMBLY							CAD No: 1862601

NOTE: THIS DRAWING AND THE INFORMATION CONTAINED THEREIN IS THE CONFIDENTIAL AND PROPRIETARY PROPERTY OF McElroy Manufacturing, Inc. THE DRAWING IS NOT TO BE REPRODUCED IN ANY MANNER, SUBMITTED OUTSIDE PARTIES FOR EXAMINATION, OR USED DIRECTLY OR INDIRECTLY FOR THE PURPOSES OTHER THAN THOSE FOR WHICH IT WAS FURNISHED WITHOUT WRITTEN PERMISSION OF McElroy Manufacturing, Inc.

240 VAC PLUG



SECTION A-A



**8"-18" 220-240V, 50/60Hz, 1Ph HEATER
HANDLE/CONTROLLER ASSEMBLY**

Parts List

ITEM	PART NO.	QTY.	DESCRIPTION
	1862601		ASSEMBLY
1	410906	1	DANGER NOT EXPLOSION PROOF TAG LABEL
2	816382	1	TEMPERATURE SCALE LABEL
3	838007	1	HEATER HANDLE WELDMENT
4	1854801	1	15AMP/250V POWER CORD
5	T5030001	1	HEATER CONTROL PCB ASSEMBLY
6	T5030002	1	POTENTIOMETER ASSEMBLY
7	T5030103	1	HEATER HANDLE/ENCLOSURE
8	MAH00030	1	#10-24NC X 1/4 LG RHSMS
9	MAL00010	7	#6-19 x 3/4LG TORX T15 PAN HEAD SCREW
10	MAL00011	1	#6-19 x 1/4LG TORX T15 PAN HEAD SCREW
11	MBA00067	1	HEX SEAL NUT
12	MBG00072	1	#10 INTERNAL TOOTHED LOCK WASHER
13	MDL00018	1	O-RING
14	MDL00243	26IN	.070 DIA. BUNA-N O-RING STOCK
15	MJJ00009	1	BLACK HAND GRIP
16	MJJ00023	1	CONTROL KNOB
17	MLL00116	60IN	#22 TYPE TGGT ELECTRICAL WIRE
18	MLL00020	84IN	#14 TYPE TGGT ELECTRICAL WIRE
19	MLM00010	1	2/12-4/18 CLOSED END SPLICE
20	MLM00012	2	14-16 HI-TEMP BUTT SPLICE
21	MLM00186	1	14-16 X 1/4 HI-TEMP RING TERMINAL
22	MLM00040	2	18-22 HI-TEMP BUTT SPLICE
23	MLN00219	4IN	FIBERGLASS TAPE

DRAWING REVISION HISTORY LISTING

PART NO: 1862601

DESCRIPTION: 8"-18" 220-240V, 50/60Hz, 1Ph HEATER HANDLE/CONTROLLER ASSEMBLY

<u>APPR.</u>	<u>REV</u>	<u>DATE</u>	<u>BY</u>	<u>DESCRIPTION OF REVISION</u>
SWB	A	04/28/03	BWW	ADDED ITEM 24 MLN00219 WITH A QTY OF 4IN & ADDED NOTE 6 FOR TAPING WIRES. ADDED LENGTH TOLERANCE TO LEAD CUT LENGTH DETAIL. UPDATED PICTORIALY ITEM 3 TO NEW DESIGN WHICH WAS IMPLEMENTED MARCH 2003.
SWB	B	8/18/03	RLE	REVISED STRIP LENGTH ON RTD ONLY FROM 3/16 TO 3/8 TO MAKE COMPATIBLE WITH CONNECTOR USED ON REV. 'B' HEATER CONTROL PCB ASSEMBLY (T5030001) & UPDATED PICTURE OF HEATER CONTROL PCB ASSEMBLY.
SWB	C	08/02/05	BWW	REVISED PICTORIALY TO SHOW EXPLODED ISOMETRIC VIEW ON SHT 1A & CONSOLIDATED ALL TO 2 SHEETS. UPDATED VIEW ON SHT 1B PICTORIALY TO SHOW REMOVAL OF UNNECESSARY GROUND WIRE BETWEEN POT SHAFT & POT TERMINAL. UPDATED GROUND SYMBOL LOCATION ON SCHEMATIC ACCORDINGLY. REMOVED MLL00020 AND MLM00012. CHANGED QTY OF ITEM 18 FROM 24IN. TO 84IN AND ADDED MLM00180 QTY 2.
JRP	D	5/30/06	BEA	TO IMPROVE MANUFACTURABILITY: CHANGED RTD WIRE, ITEM 17, FROM 18 AWG TO 22 AWG. CHANGED POWER AND GROUND WIRE, ITEM 18, FROM 12 AWG TO 14 AWG. CHANGED SPLICES, ITEM 20, AND RING TERMINAL, ITEM 21, TO BE COMPATIBLE WITH NEW WIRE GAUGES.



McElroy Manufacturing, Inc.
 The leader by design.
 Tulsa, Oklahoma U.S.A.

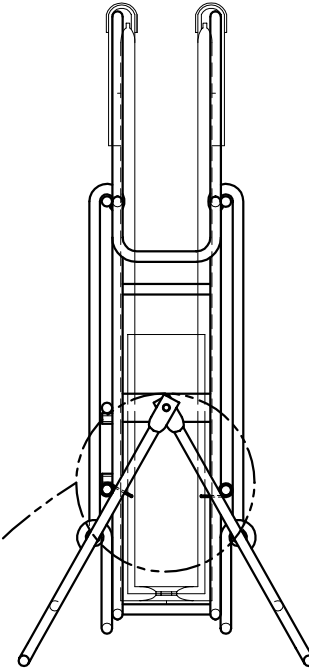
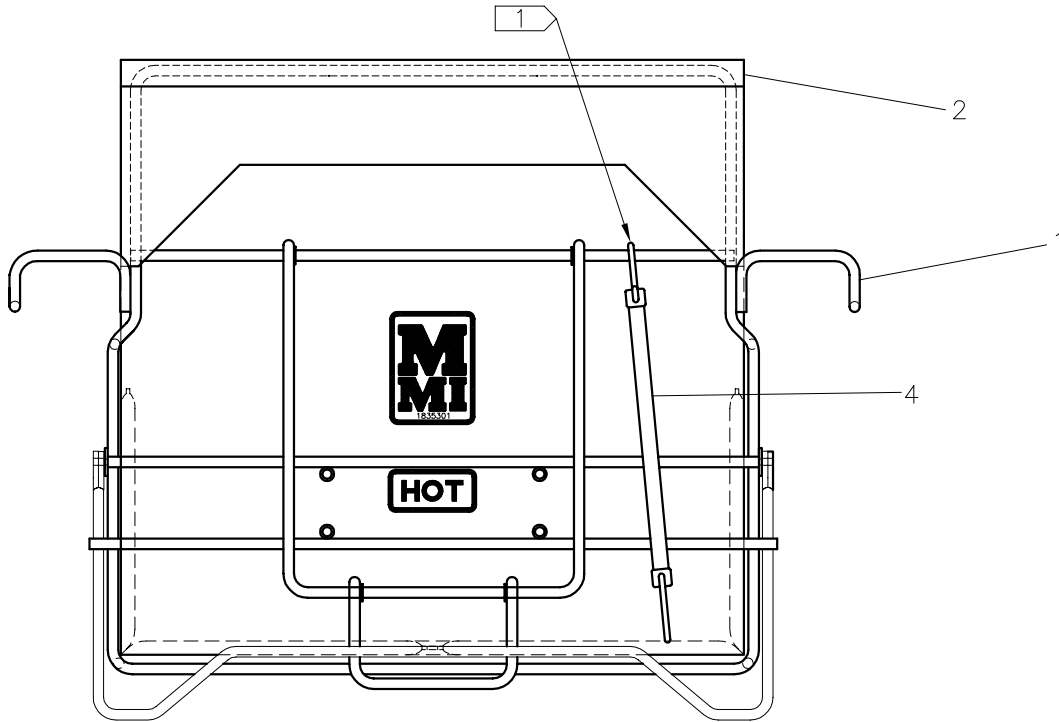
DRAWN: SS CHECK: SWB APPRVD: B DATE: 2/12/97 SHT No: 2 REV No: B PART No: 1835102

HEATER BAG ASSEMBLY

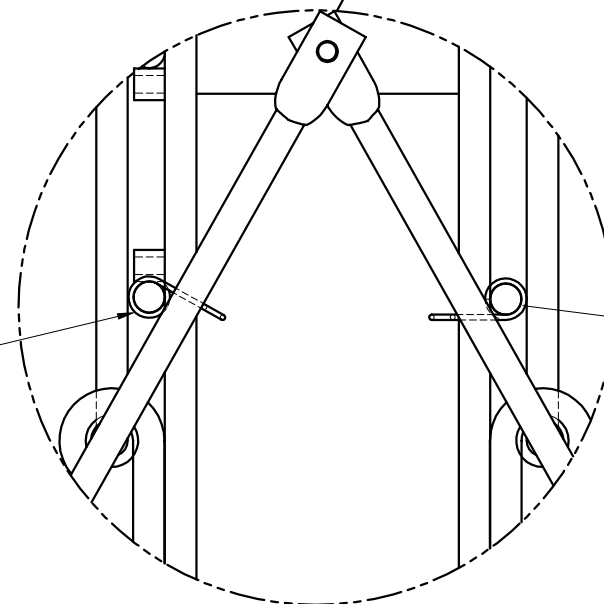
NOTE: THIS DRAWING AND THE INFORMATION CONTAINED THEREIN IS THE CONFIDENTIAL AND PROPRIETARY PROPERTY OF McElroy Manufacturing, Inc. THE DRAWING IS NOT TO BE REPRODUCED IN ANY MANNER, SUBMITTED OUTSIDE PARTIES FOR EXAMINATION, OR USED DIRECTLY OR INDIRECTLY FOR THE PURPOSES OTHER THAN THOSE FOR WHICH IT WAS FURNISHED WITHOUT WRITTEN PERMISSION OF McElroy Manufacturing, Inc.

NOTES:

1. CLOSE LOOP THIS HOOK ONLY.



SPRINGS MUST BE
 INSTALLED WITH ORIENTATION
 SHOWN



3(4)

HEATER BAG ASSEMBLYParts List

ITEM	PART NO.	QTY.	DESCRIPTION
	1835102		ASSEMBLY
1	1835206	1	FRAME WELDMENT
2	1835301	1	HEATER BAG
3	1835208	4	LEG RETAINER SPRING
4	MJG00001	1	RUBBER BUNGEE CORD

DRAWING REVISION HISTORY LISTING

PART NO: 1835102
DESCRIPTION: HEATER BAG ASSEMBLY

<u>APPR.</u>	<u>REV</u>	<u>DATE</u>	<u>BY</u>	<u>DESCRIPTION OF REVISION</u>
TLW	A	12/6/00	BWW	REVISED DRAWING TO SHOW NEW HEATER BAG FRAME DESIGN AND ADDED NEW PART LEG RETAINER SPRING (1835208) ITEM 3 AND DETAIL FOR ORIENTATION.
SWB	B	10/21/05	BWW	REMOVED PARTS LIST FROM DRAWING FACE PER PARTS FINDER PROJECT.