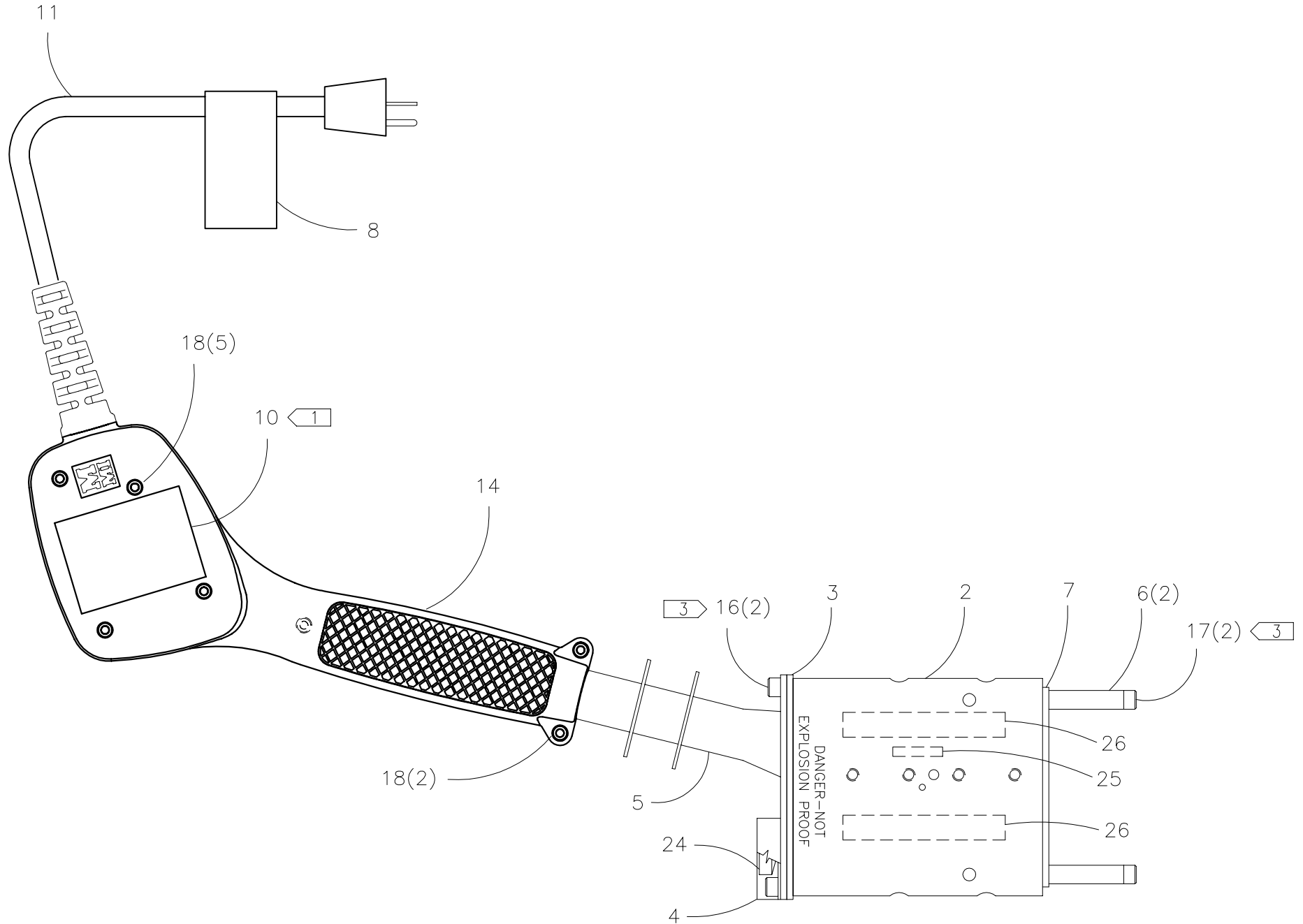




McElroy Manufacturing, Inc.
 The leader by design.
 Tulsa, Oklahoma U.S.A.

DRAWN: RLE	CHECK: TMT	APPRV'D: JRP	DATE: 3/6/02	DWG No: 214900	SHT No: 4A	REV No: C	PART No: 214904
2" Multi-Mc SIDEWALL & SOCKET HEATER ASSEMBLY 200-240V, 50/60Hz, 1Ph							CAD No: 214904

NOTE: THIS DRAWING AND THE INFORMATION CONTAINED THEREIN IS THE CONFIDENTIAL AND PROPRIETARY PROPERTY OF McElroy Manufacturing, Inc. THE DRAWING IS NOT TO BE REPRODUCED IN ANY MANNER, SUBMITTED OUTSIDE PARTIES FOR EXAMINATION, OR USED DIRECTLY OR INDIRECTLY FOR THE PURPOSES OTHER THAN THOSE FOR WHICH IT WAS FURNISHED WITHOUT WRITTEN PERMISSION OF McElroy Manufacturing, Inc.



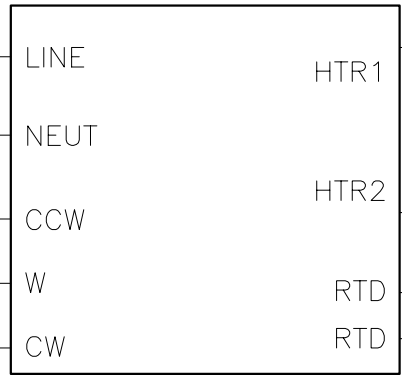
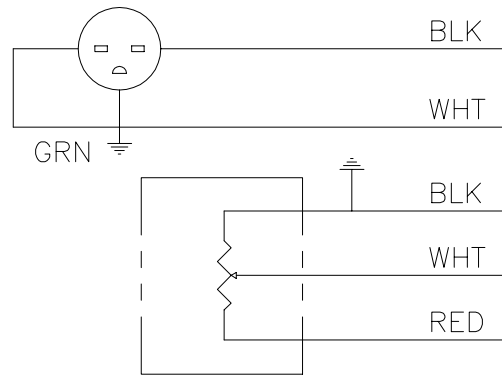


McElroy Manufacturing, Inc.
The leader by design.
Tulsa, Oklahoma U.S.A.

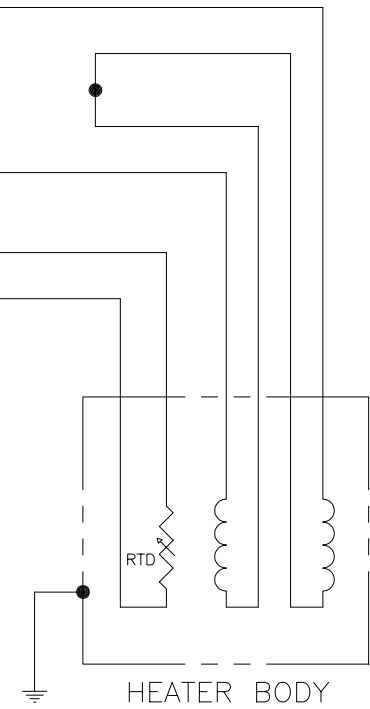
DRAWN: RLE	CHECK: TMT	APPR'D: JRP	DATE: 3/6/02	DWG No: 214900	SHT No: 4B	REV No: C	PART No: 214904
2" Multi-Mc SIDEWALL & SOCKET HEATER ASSEMBLY 200-240V, 50/60Hz, 1Ph							CAD No: 214904

NOTE: THIS DRAWING AND THE INFORMATION CONTAINED THEREIN IS THE CONFIDENTIAL AND PROPRIETARY PROPERTY OF McElroy Manufacturing, Inc. THE DRAWING IS NOT TO BE REPRODUCED IN ANY MANNER, SUBMITTED OUTSIDE PARTIES FOR EXAMINATION, OR USED DIRECTLY OR INDIRECTLY FOR THE PURPOSES OTHER THAN THOSE FOR WHICH IT WAS FURNISHED WITHOUT WRITTEN PERMISSION OF McElroy Manufacturing, Inc.

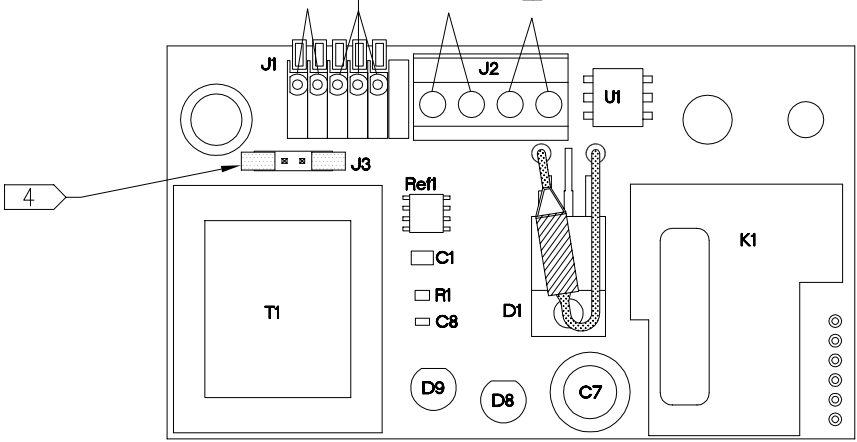
240 VAC PLUG



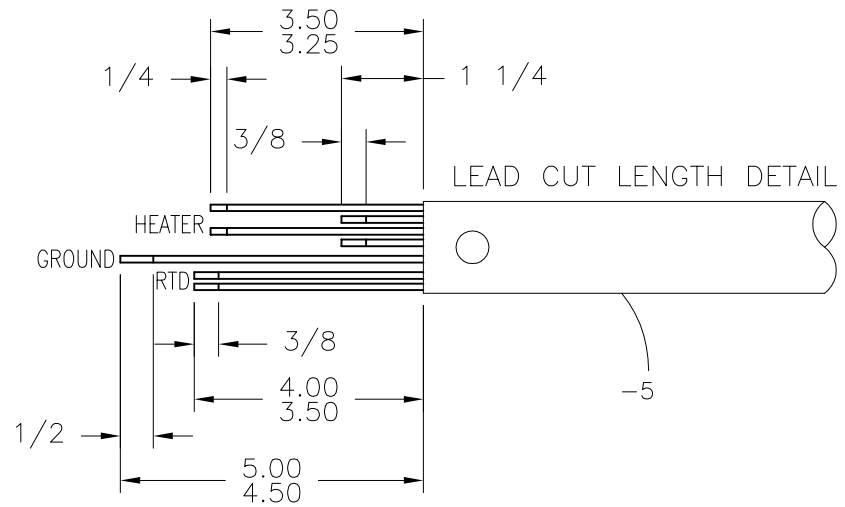
TEMP ADJUST



RTD LEADS
POTENTIOMETER LEADS
HEATER ELEMENT LEADS
POWER LEADS



DETAIL ITEM -12 REF.

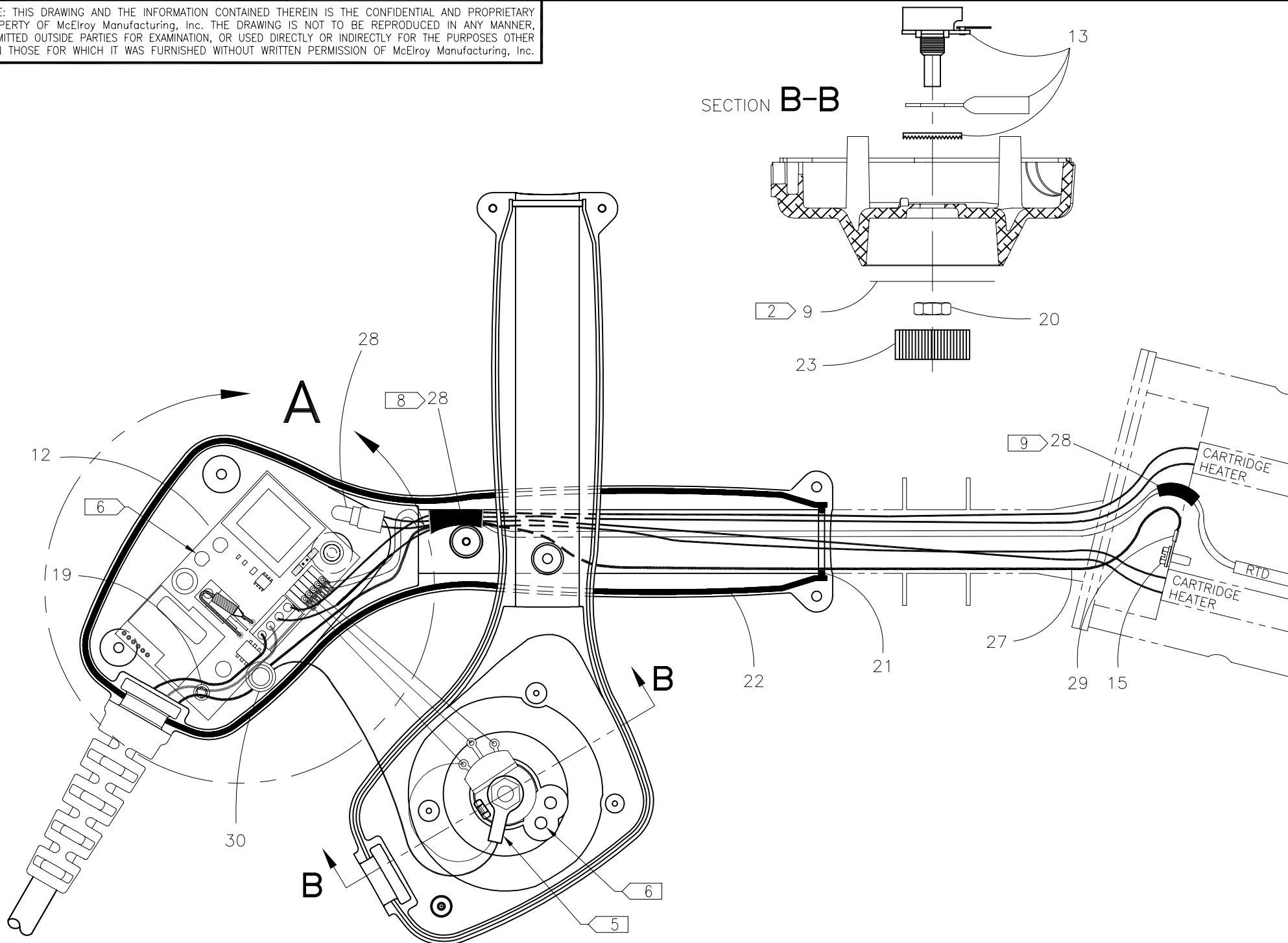




McElroy Manufacturing, Inc.
 The leader by design.
 Tulsa, Oklahoma U.S.A.

DRAWN: RLE	CHECK: TMT	APPRV'D: JRP	DATE: 3/6/02	DWG No.: 214900	SHT No.: 4C	REV No.: C	PART No.: 214904
2" Multi-Mc SIDEWALL & SOCKET HEATER ASSEMBLY 200-240V, 50/60Hz, 1Ph							CAD No.: 214904

NOTE: THIS DRAWING AND THE INFORMATION CONTAINED THEREIN IS THE CONFIDENTIAL AND PROPRIETARY PROPERTY OF McElroy Manufacturing, Inc. THE DRAWING IS NOT TO BE REPRODUCED IN ANY MANNER, SUBMITTED OUTSIDE PARTIES FOR EXAMINATION, OR USED DIRECTLY OR INDIRECTLY FOR THE PURPOSES OTHER THAN THOSE FOR WHICH IT WAS FURNISHED WITHOUT WRITTEN PERMISSION OF McElroy Manufacturing, Inc.



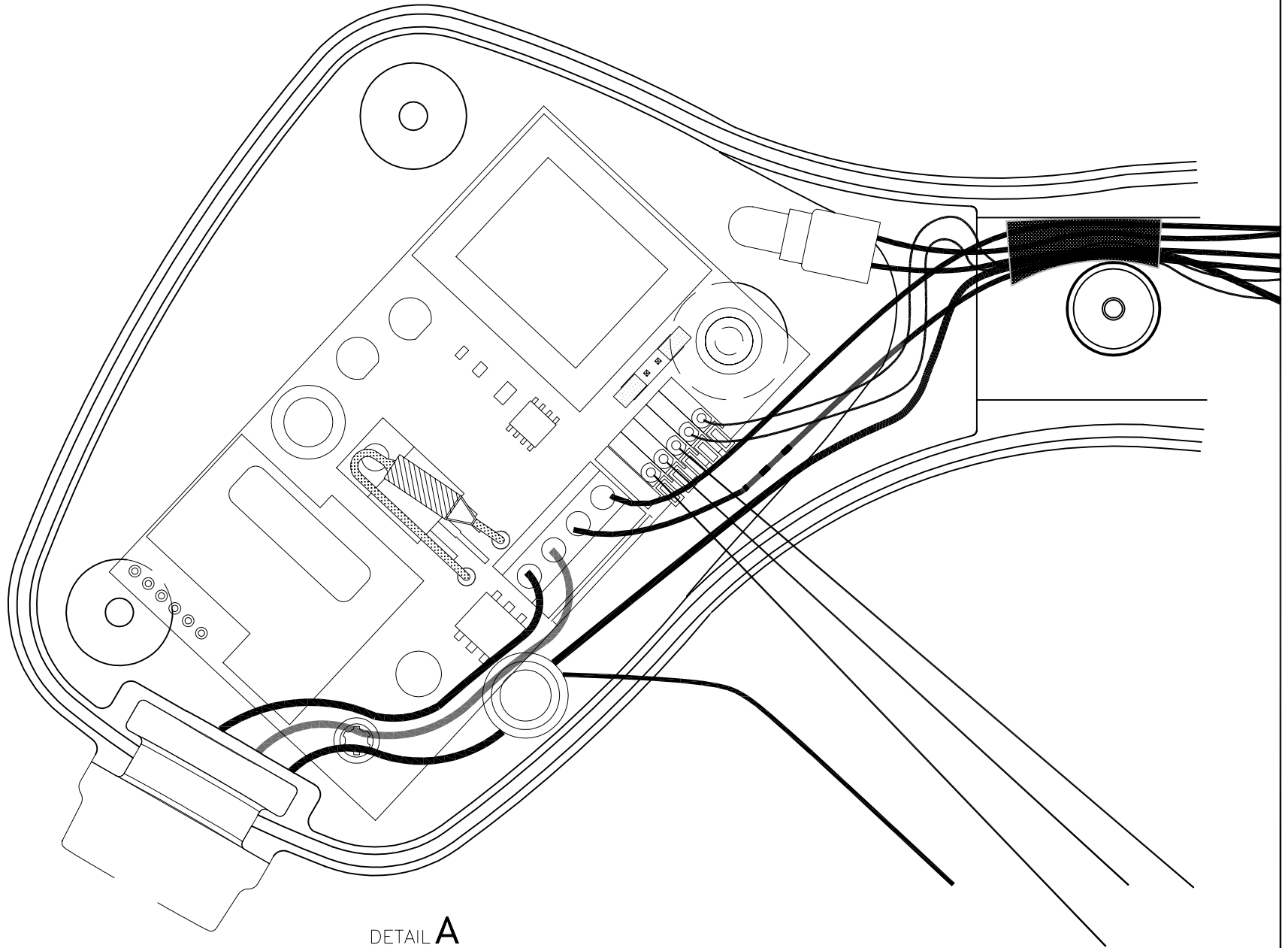


McElroy Manufacturing, Inc.
The leader by design.
Tulsa, Oklahoma U.S.A.

DRAWN: RLE	CHECK: TMT	APPRV'D: JRP	DATE: 3/6/02	DWG No: 214900	SHT No: 4D	REV No: C	PART No: 214904
2" Multi-Mc SIDEWALL & SOCKET HEATER ASSEMBLY 200-240V, 50/60Hz, 1Ph							CAD No: 214904

NOTE: THIS DRAWING AND THE INFORMATION CONTAINED THEREIN IS THE CONFIDENTIAL AND PROPRIETARY PROPERTY OF McElroy Manufacturing, Inc. THE DRAWING IS NOT TO BE REPRODUCED IN ANY MANNER, SUBMITTED OUTSIDE PARTIES FOR EXAMINATION, OR USED DIRECTLY OR INDIRECTLY FOR THE PURPOSES OTHER THAN THOSE FOR WHICH IT WAS FURNISHED WITHOUT WRITTEN PERMISSION OF McElroy Manufacturing, Inc.

DETAIL TO SHOW HOW TO LAY WIRES INTO ENCLOSURE



DETAIL A

2" Multi-Mc SIDEWALL & SOCKET HEATER ASSEMBLY
200-240V, 50/60Hz, 1Ph

Parts List

ITEM	PART NO.	QTY.	DESCRIPTION
	214904		ASSEMBLY
1	A214102	1	SOCKET FUSION SCREW/DRIVER KIT (NOT SHOWN)
2	214501	1	Multi-Mc HEATER BODY
3	214701	1	Multi-Mc HEATER COVER PLATE GASKET
4	214801	1	Multi-Mc THERMAL GUARD
5	226501	1	HEATER COVER PLATE WELDMENT
6	SW03503	2	HEATER SPACER TUBE
7	SW03801	1	SIDEWINDER HEATER SPACER BASE
8	410906	1	DANGER NOT EXPLOSION PROOF TAG LABEL
9	816382	1	TEMPERATURE SCALE LABEL
10	816387	1	MODEL 214904 PART NO. LABEL
11	1854801	1	15AMP/250V POWER CORD
12	T5030001	1	HEATER CONTROL PCB ASSEMBLY
13	T5030002	1	POTENTIOMETER ASSEMBLY
14	T5030103	1	HEATER HANDLE/ENCLOSURE
15	MAH00036	1	#6-32NC x 3/8 LG. HWH TC SCREW
16	MAH00052	2	1/4-20NC x 3/4 LG. SHCS SS
17	MAH00067	2	1/4-20NC x 2" LG. SHCS SS
18	MAL00010	7	#6-19 x 3/4LG TORX T15 PAN HEAD SCREW
19	MAL00011	1	#6-19 x 1/4LG TORX T15 PAN HEAD SCREW
20	MBA00067	1	HEX SEAL NUT
21	MDL00018	1	O-RING
22	MDL00243	26IN	.070 DIA. BUNA-N O-RING STOCK
23	MJJ00023	1	CONTROL KNOB
24	MJK00001	1	5" LG., 150-750° F THERMOMETER
25	MKI00003	1	1 x 3/16 316SS 100 OHM PLATINUM RTD
26	MLD00008	2	120V, 400W, 1/2 x 2-1/2 CARTRIDGE HEATER
27	MLL00004	18IN	#18 TYPE TGGT ELECTRICAL WIRE
28	MLM00002	1	CRIMP ON WIRE JOINT
29	MLM00004	1	RING TERMINAL
30	MLM00010	1	CONNECTOR
31	MLN00219	8IN	FIBERGLASS TAPE

NOTES:

- ITEM 10 SHOULD BE ORIENTED THE SAME AS THE MMI LOGO.
- ITEM 9 MUST BE ORIENTED SO THE NOTCH ENGAGES THE KEY ON ITEM 14.
- INSTALL WITH HIGH TEMPERATURE ANTI-SEIZE COMPOUND.
- PLACE ONE JUMPER ON CENTER TWO PINS FOR 200-240V OPERATION.

2" Multi-Mc SIDEWALL & SOCKET HEATER ASSEMBLY
200-240V, 50/60Hz, 1Ph

Parts List

ITEM	PART NO.	QTY.	DESCRIPTION
5.			RING TERMINAL MUST BE ORIENTED AS SHOWN.
6.			WHEN MATING HALVES, MAKE SURE THE LED ON THE PC BOARD, ITEM 12, FITS INTO LONG SOCKET ON COVER.
7.			SET AND CHECK TEMPERATURE PER SP-9.
8.			TAPE WIRES IN AREA OF HANDLE BOSS TO PREVENT PINCHING AT ASSEMBLY.
9.			TAPE RTD WIRES IN AREA OF RTD HOLE EXIT TO PREVENT CHAFFING.

DRAWING REVISION HISTORY LISTING

PART NO: 214904

DESCRIPTION: 2" Multi-Mc SIDEWALL & SOCKET HEATER ASSEMBLY 200-240V, 50/60Hz, 1Ph

<u>APPR.</u>	<u>REV</u>	<u>DATE</u>	<u>BY</u>	<u>DESCRIPTION OF REVISION</u>
SWB	A	01/23/03	BWW	ADDED ITEM 31 MLN00219 WITH A QTY OF 8IN & ADDED NOTE 8 AND 9 FOR TAPING WIRES. ADDED LENGTH TOLERANCE TO LEAD CUT LENGTH DETAIL.
SWB	B	8/15/03	RLE	REVISED STRIP LENGTH ON RTD ONLY FROM 3/16 TO 3/8 TO MAKE COMPATIBLE WITH CONNECTOR USED ON REV. 'B' HEATER CONTROL PCB ASSEMBLY (T5030001) & UPDATED PICTURE OF HEATER CONTROL PCB ASSEMBLY.
SWB	C	10/27/03	BWW	CORRECTED PICTORIALY THE VIEW OF THE PCB BOARD ON SHT 4C AND 4D TO SHOW CURRENT DESIGN.