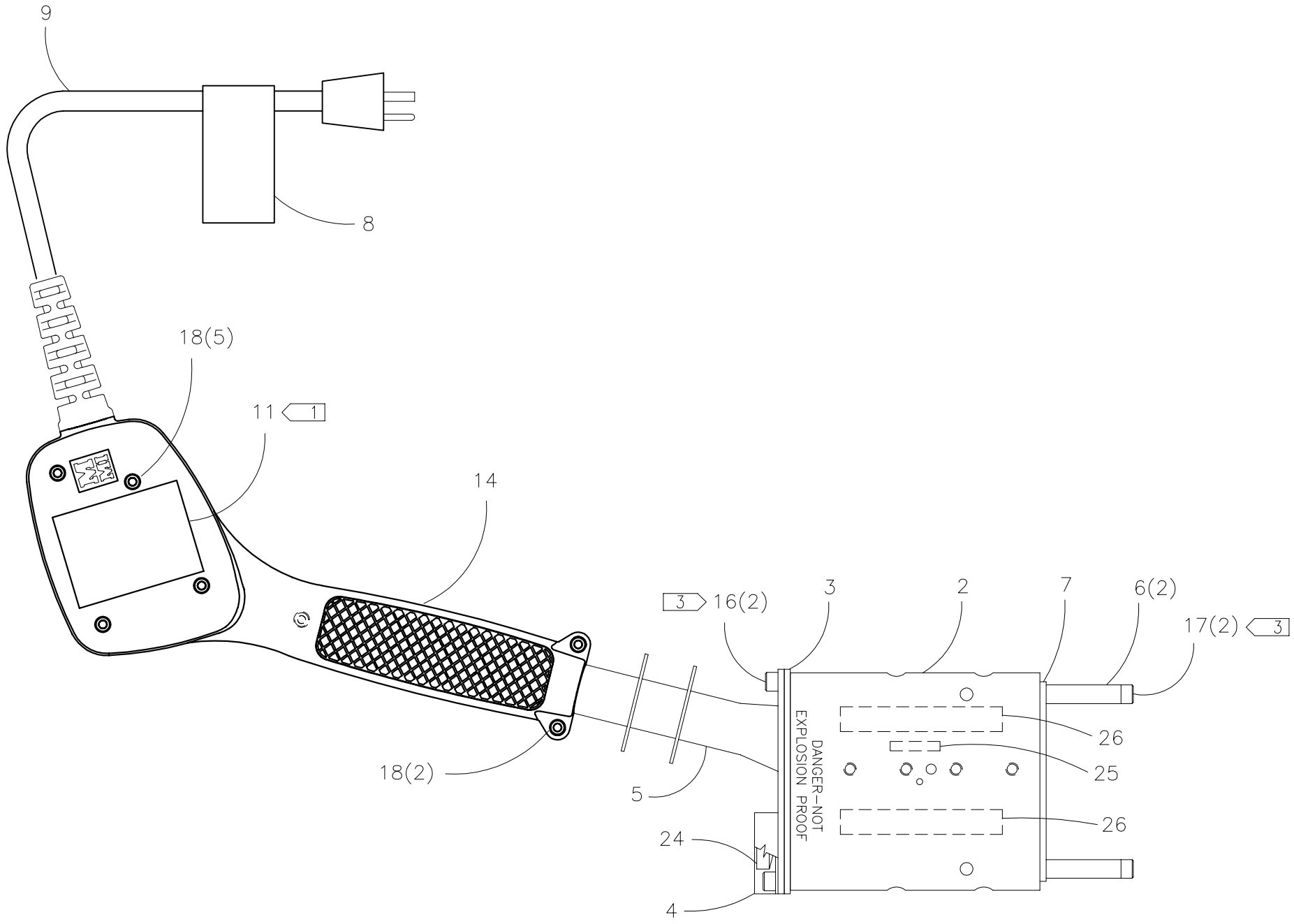




**McElroy Manufacturing, Inc.**  
 The leader by design.  
 Tulsa, Oklahoma U.S.A.

DRAWN: RLE	CHECK: TMT	APPRV'D: JRP	DATE: 3/5/02	DWG No: 214900	SHT No: 3A	REV No: C	PART No: 214903
2" Multi-Mc SIDEWALL & SOCKET HEATER ASSEMBLY 100-120V, 50/60Hz, 1Ph							CAD No: 214903

NOTE: THIS DRAWING AND THE INFORMATION CONTAINED THEREIN IS THE CONFIDENTIAL AND PROPRIETARY PROPERTY OF McElroy Manufacturing, Inc. THE DRAWING IS NOT TO BE REPRODUCED IN ANY MANNER, SUBMITTED OUTSIDE PARTIES FOR EXAMINATION, OR USED DIRECTLY OR INDIRECTLY FOR THE PURPOSES OTHER THAN THOSE FOR WHICH IT WAS FURNISHED WITHOUT WRITTEN PERMISSION OF McElroy Manufacturing, Inc.



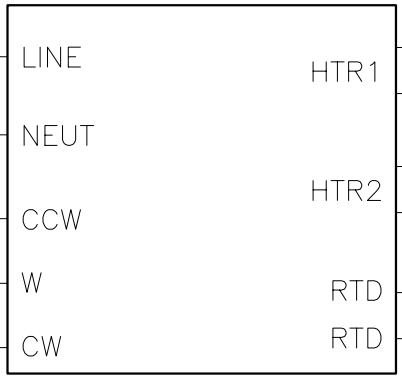
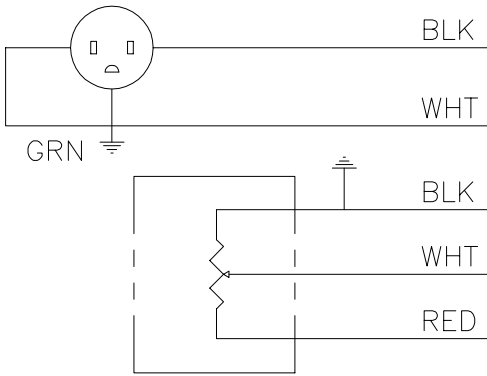


**McElroy Manufacturing, Inc.**  
 The leader by design.  
 Tulsa, Oklahoma U.S.A.

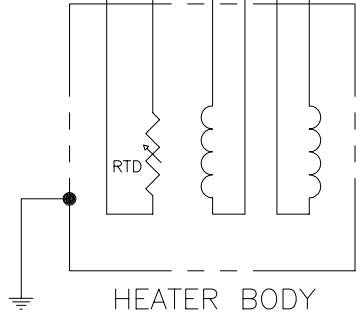
DRAWN: RLE	CHECK: TMT	APPR'D: JRP	DATE: 3/5/02	DWG No: 214900	SHT No: 3B	REV No: C	PART No: 214903
2" Multi-Mc SIDEWALL & SOCKET HEATER ASSEMBLY 100-120V, 50/60Hz, 1Ph							CAD No: 214903

NOTE: THIS DRAWING AND THE INFORMATION CONTAINED THEREIN IS THE CONFIDENTIAL AND PROPRIETARY PROPERTY OF McElroy Manufacturing, Inc. THE DRAWING IS NOT TO BE REPRODUCED IN ANY MANNER, SUBMITTED OUTSIDE PARTIES FOR EXAMINATION, OR USED DIRECTLY OR INDIRECTLY FOR THE PURPOSES OTHER THAN THOSE FOR WHICH IT WAS FURNISHED WITHOUT WRITTEN PERMISSION OF McElroy Manufacturing, Inc.

120 VAC PLUG

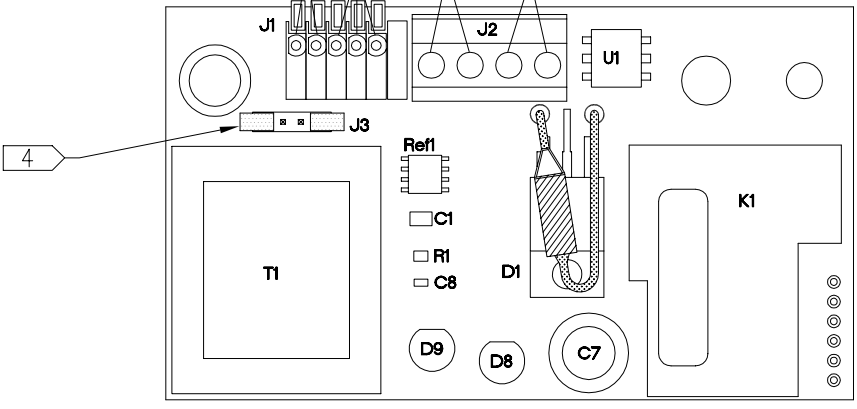


TEMP ADJUST

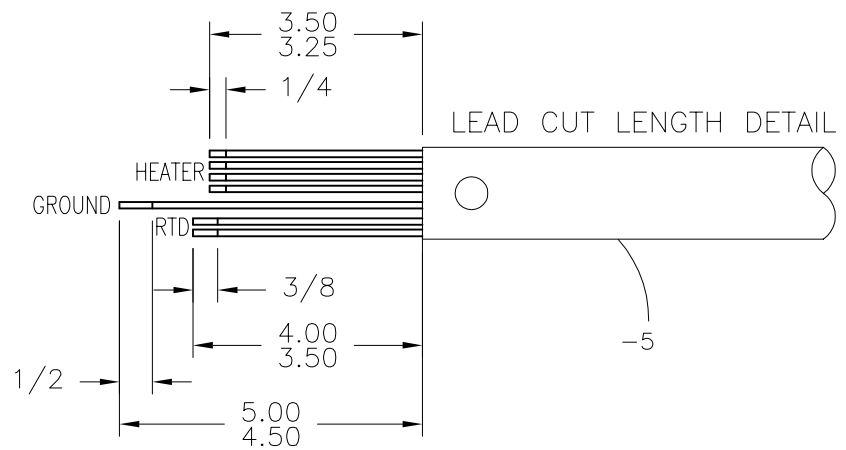


HEATER BODY

RTD LEADS  
 POTENTIOMETER LEADS  
 HEATER ELEMENT LEADS  
 POWER LEADS



DETAIL ITEM -12 REF.



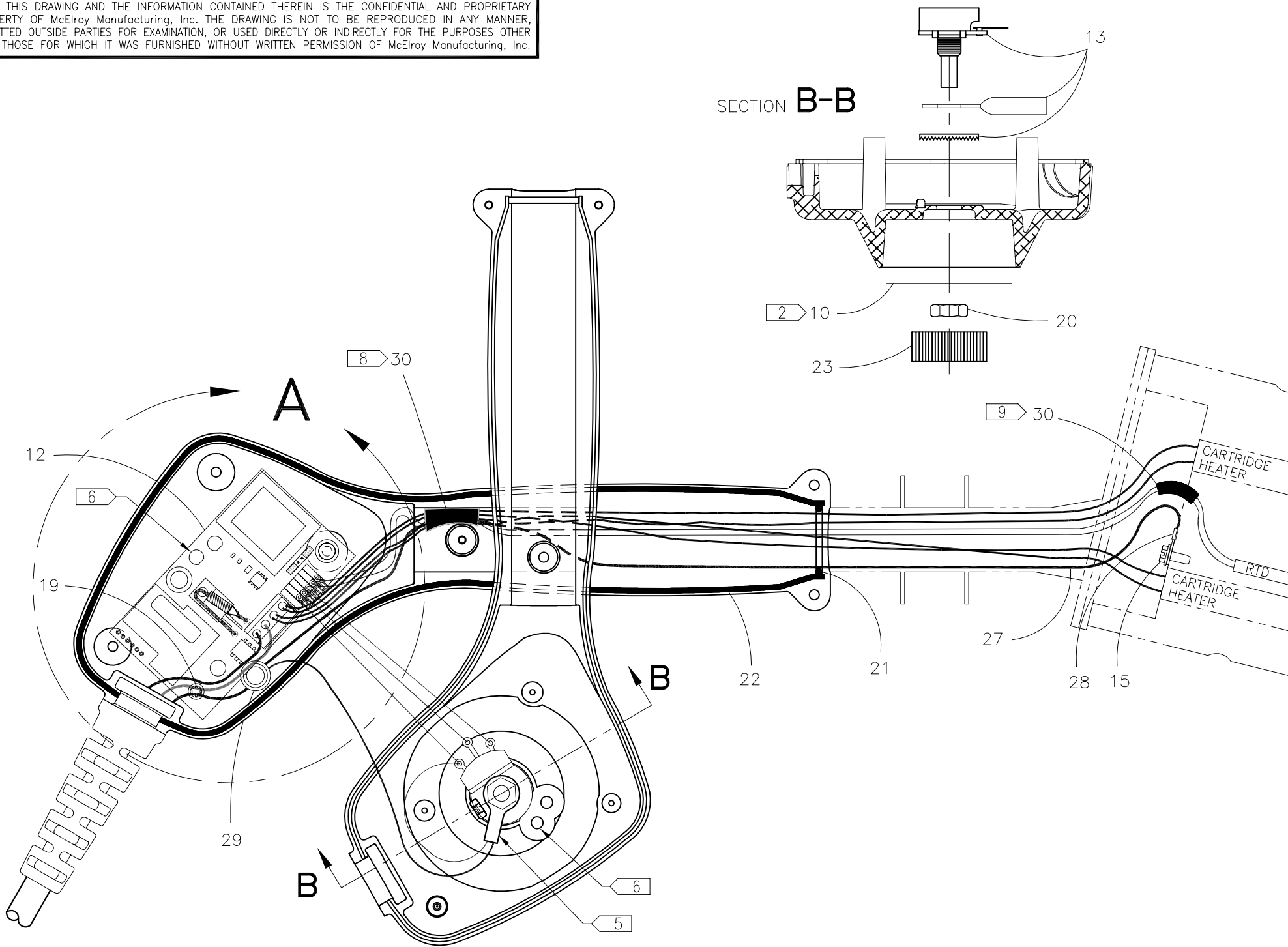
LEAD CUT LENGTH DETAIL



**McElroy Manufacturing, Inc.**  
 The leader by design.  
 Tulsa, Oklahoma U.S.A.

DRAWN: RLE	CHECK: TMT	APPRV'D: JRP	DATE: 3/5/02	DWG No.: 214900	SHT No.: 3C	REV No.: C	PART No.: 214903
2" Multi-Mc SIDEWALL & SOCKET HEATER ASSEMBLY 100-120V, 50/60Hz, 1Ph							CAD No.: 214903

NOTE: THIS DRAWING AND THE INFORMATION CONTAINED THEREIN IS THE CONFIDENTIAL AND PROPRIETARY PROPERTY OF McElroy Manufacturing, Inc. THE DRAWING IS NOT TO BE REPRODUCED IN ANY MANNER, SUBMITTED OUTSIDE PARTIES FOR EXAMINATION, OR USED DIRECTLY OR INDIRECTLY FOR THE PURPOSES OTHER THAN THOSE FOR WHICH IT WAS FURNISHED WITHOUT WRITTEN PERMISSION OF McElroy Manufacturing, Inc.



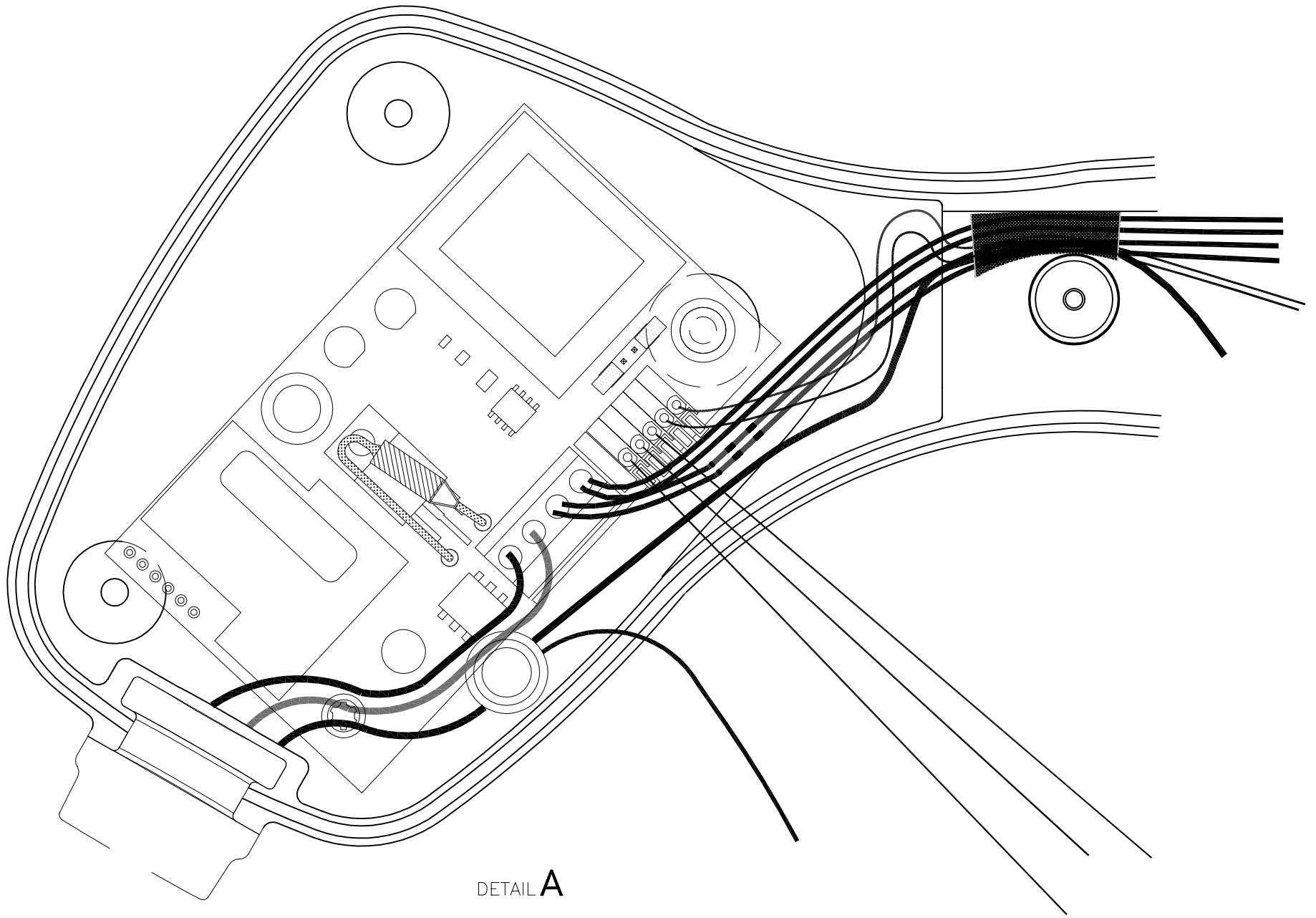


**McElroy Manufacturing, Inc.**  
The leader by design.  
Tulsa, Oklahoma U.S.A.

DRAWN: RLE	CHECK: TMT	APPRV'D: JRP	DATE: 3/5/02	DWG No: 214900	SHT No: 3D	REV No: C	PART No: 214903
2" Multi-Mc SIDEWALL & SOCKET HEATER ASSEMBLY 100-120V, 50/60Hz, 1Ph							CAD No: 214903

NOTE: THIS DRAWING AND THE INFORMATION CONTAINED THEREIN IS THE CONFIDENTIAL AND PROPRIETARY PROPERTY OF McElroy Manufacturing, Inc. THE DRAWING IS NOT TO BE REPRODUCED IN ANY MANNER, SUBMITTED OUTSIDE PARTIES FOR EXAMINATION, OR USED DIRECTLY OR INDIRECTLY FOR THE PURPOSES OTHER THAN THOSE FOR WHICH IT WAS FURNISHED WITHOUT WRITTEN PERMISSION OF McElroy Manufacturing, Inc.

DETAIL TO SHOW HOW TO LAY WIRES INTO ENCLOSURE



DETAIL A

**2" Multi-Mc SIDEWALL & SOCKET HEATER ASSEMBLY**  
**100-120V, 50/60Hz, 1Ph**

Parts List

ITEM	PART NO.	QTY.	DESCRIPTION
	<b>214903</b>		<b>ASSEMBLY</b>
1	A214102	1	SOCKET FUSION SCREW/DRIVER KIT (NOT SHOWN)
2	214501	1	Multi-Mc HEATER BODY
3	214701	1	Multi-Mc HEATER COVER PLATE GASKET
4	214801	1	Multi-Mc THERMAL GUARD
5	226501	1	HEATER COVER PLATE WELDMENT
6	SW03503	2	HEATER SPACER TUBE
7	SW03801	1	SIDEWINDER HEATER SPACER BASE
8	410906	1	DANGER NOT EXPLOSION PROOF TAG LABEL
9	434201	1	13AMP/120V POWER CORD
10	816382	1	TEMPERATURE SCALE LABEL
11	816388	1	MODEL 214903 PART NO. LABEL
12	T5030001	1	HEATER CONTROL PCB ASSEMBLY
13	T5030002	1	POTENTIOMETER ASSEMBLY
14	T5030103	1	HEATER HANDLE/ENCLOSURE
15	MAH00036	1	#6-32NC x 3/8 LG. HWH TC SCREW
16	MAH00052	2	1/4-20NC x 3/4 LG. SHCS SS
17	MAH00067	2	1/4-20NC x 2" LG. SHCS SS
18	MAL00010	7	#6-19 x 3/4LG TORX T15 PAN HEAD SCREW
19	MAL00011	1	#6-19 x 1/4LG TORX T15 PAN HEAD SCREW
20	MBA00067	1	HEX SEAL NUT
21	MDL00018	1	O-RING
22	MDL00243	26IN	.070 DIA. BUNA-N O-RING STOCK
23	MJJ00023	1	CONTROL KNOB
24	MJK00001	1	5" LG., 150-750° F THERMOMETER
25	MKI00003	1	1 x 3/16 316SS 100 OHM PLATINUM RTD
26	MLD00008	2	120V, 400W, 1/2 x 2-1/2 CARTRIDGE HEATER
27	MLL00004	18IN	#18 TYPE TGGT ELECTRICAL WIRE
28	MLM00004	1	RING TERMINAL
29	MLM00010	1	CONNECTOR
30	MLN00219	8IN	FIBERGLASS TAPE

**NOTES:**

1. ITEM 11 SHOULD BE ORIENTED THE SAME AS THE MMI LOGO.
2. ITEM 10 MUST BE ORIENTED SO THE NOTCH ENGAGES THE KEY ON ITEM 14.
3. INSTALL WITH HIGH TEMPERATURE ANTI-SEIZE COMPOUND.
4. PLACE TWO JUMPERS AS SHOWN FOR 100-120V OPERATION.
5. RING TERMINAL MUST BE ORIENTED AS SHOWN.

**2" Multi-Mc SIDEWALL & SOCKET HEATER ASSEMBLY**  
**100-120V, 50/60Hz, 1Ph**

Parts List

ITEM	PART NO.	QTY.	DESCRIPTION
6.			WHEN MATING HALVES, MAKE SURE THE LED ON THE PC BOARD, ITEM 12, FITS INTO LONG SOCKET ON COVER.
7.			SET AND CHECK TEMPERATURE PER SP-9.
8.			TAPE WIRES IN AREA OF HANDLE BOSS TO PREVENT PINCHING AT ASSEMBLY.
9.			TAPE RTD WIRES IN AREA OF RTD HOLE EXIT TO PREVENT CHAFFING.

## DRAWING REVISION HISTORY LISTING

**PART NO:** 214903

**DESCRIPTION:** 2" Multi-Mc SIDEWALL & SOCKET HEATER ASSEMBLY 100-120V, 50/60Hz, 1Ph

<u>APPR.</u>	<u>REV</u>	<u>DATE</u>	<u>BY</u>	<u>DESCRIPTION OF REVISION</u>
SWB	A	01/23/03	BWW	ADDED ITEM 30 MLN00219 WITH A QTY OF 8IN & ADDED NOTE 8 AND 9 FOR TAPING WIRES. ADDED LENGTH TOLERANCE TO LEAD CUT LENGTH DETAIL.
SWB	B	8/15/03	RLE	REVISED STRIP LENGTH ON RTD ONLY FROM 3/16 TO 3/8 TO MAKE COMPATIBLE WITH CONNECTOR USED ON REV. 'B' HEATER CONTROL PCB ASSEMBLY (T5030001) & UPDATED PICTURE OF HEATER CONTROL PCB ASSEMBLY.
SWB	C	10/27/03	BWW	CORRECTED PICTORIALY THE VIEW OF THE PCB BOARD ON SHT 3C AND 3D TO SHOW CURRENT DESIGN.