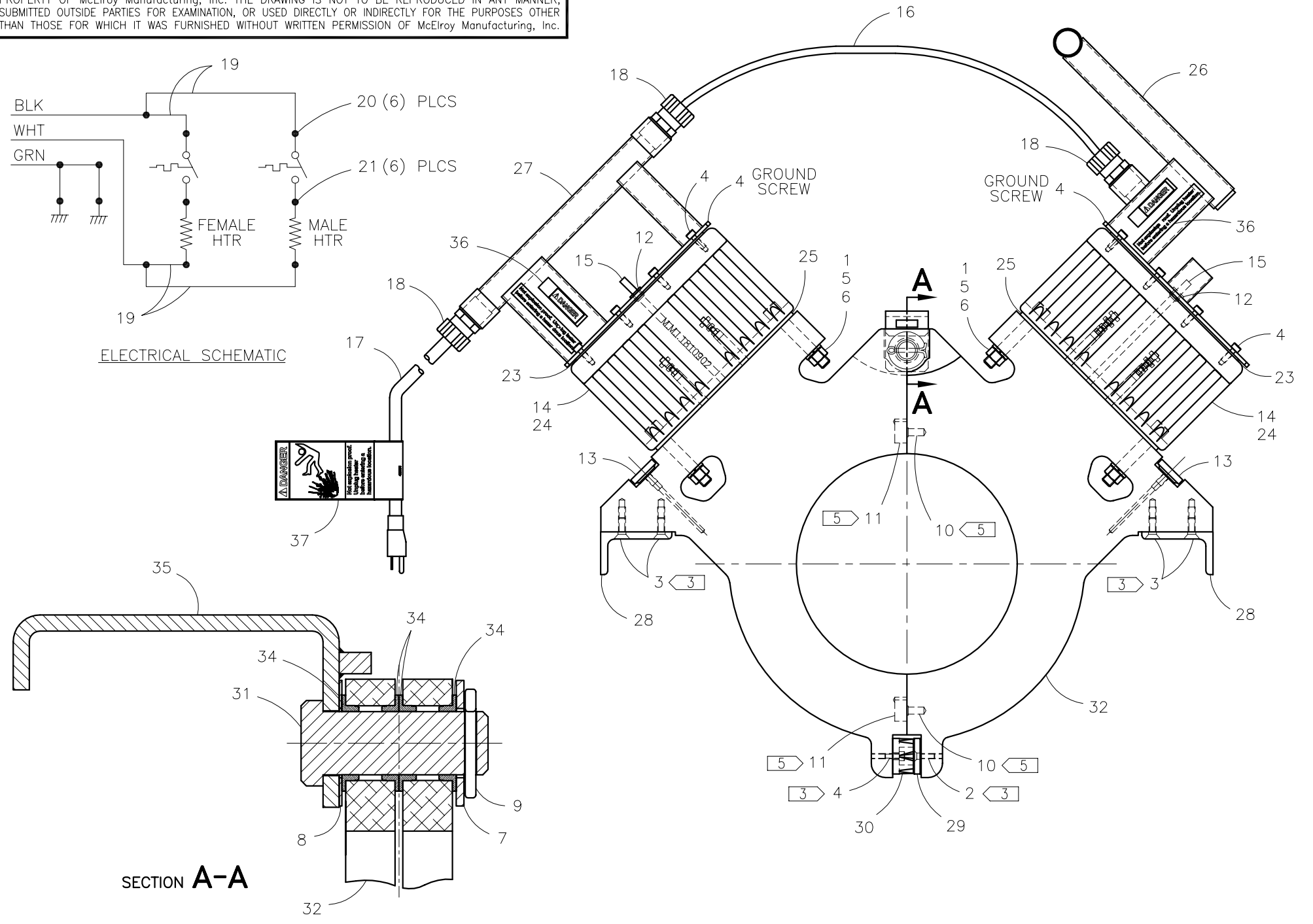
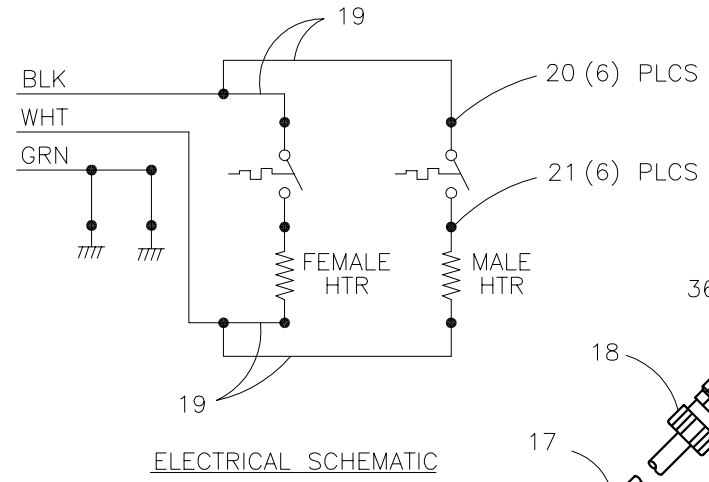




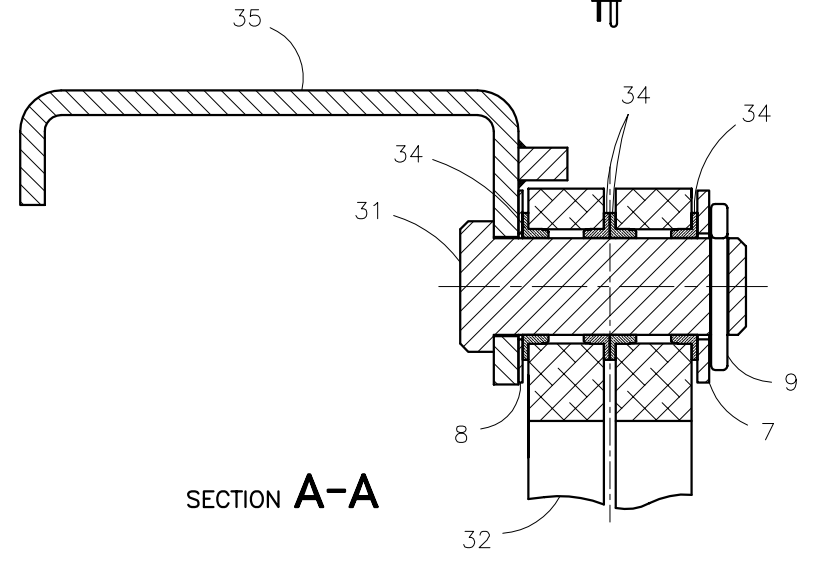
McElroy Manufacturing, Inc.
 The leader by design.
 Tulsa, Oklahoma U.S.A.

DRAWN: SS	CHECK: BWP	APPRV'D: JRP	DATE: 7/15/97	DWG No: 1238800	SHT No: 1	REV No: C	PART No: 1238801
6 x 10 SPLIT HEATER ASSEMBLY 220-240V, 50/60Hz, 1Ph							CAD No: 1238801

NOTE: THIS DRAWING AND THE INFORMATION CONTAINED THEREIN IS THE CONFIDENTIAL AND PROPRIETARY PROPERTY OF McElroy Manufacturing, Inc. THE DRAWING IS NOT TO BE REPRODUCED IN ANY MANNER, SUBMITTED OUTSIDE PARTIES FOR EXAMINATION, OR USED DIRECTLY OR INDIRECTLY FOR THE PURPOSES OTHER THAN THOSE FOR WHICH IT WAS FURNISHED WITHOUT WRITTEN PERMISSION OF McElroy Manufacturing, Inc.



SECTION A-A



**6 x 10 SPLIT HEATER ASSEMBLY
220-240V, 50/60Hz, 1Ph**

Parts List

ITEM	PART NO.	QTY.	DESCRIPTION
	1238801		ASSEMBLY
1	MAH00071	4	3/8-16NC x 2-1/2 LG. SHCS SS
2	MAH00105	1	#10-24NC x 3/4 LG. FHSCS SS
3	MAH00077	4	1/4-20NC x 3/4 LG. FHSCS SS
4	MAH00046	19	#10-24 x 1/2 LG. SHCS SS
5	MBA00007	4	3/8-16NC FINISHED HEX NUT
6	MBE00007	4	3/8" REGULAR SPLIT LOCK WASHER
7	MBG00004	1	3/4" TYPE 'AN' FLAT WASHER
8	MBG00006	1	3/4" TYPE 'AN' FLAT WASHER
9	MCH00001	1	1/8" DIA x 1" LG. COTTER PIN
10	MCK00025	2	1/4" DIA. BULLET NOSE DOWEL (REF.)
11	MCK00026	2	1/4" I.D. SLOTTED LOCATOR BUSHING (REF.)
12	MDL00071	2	GROMMET
13	MJK00002	2	150-750° F THERMOMETER
14	MJQ00125	4	1/16" x 3.3" x 6.63" GASKET
15	MLC00006	2	THERMOSWITCH
16	MLE00003	1 FT	#14/3 ELECTRICAL CABLE
17	MLE00012	1	#14/3 ELECTRICAL CABLE ASSEMBLY
18	MLK00007	3	STRAIN RELIEF CONNECTOR
19	MLL00020	4 FT	#14 TYPE TGGT WIRE
20	MLM00010	6	CONNECTOR
21	MLM00013	6	CONNECTOR
22			
23	1808102	2	HEATER GASKET
24	1810902	2	TERMINAL ENCLOSURE
25	1207302	2	TERMINAL ENCLOSURE GASKET
26	1237601	1	MALE SPLIT HEATER HANDLE BRACKET WELDMENT
27	1237701	1	FEMALE SPLIT HEATER HANDLE BRACKET WELDMENT
28	1237901	2	SPLIT HEATER MOUNTING BRACKET
29	1238001	1	SPLIT HEATER MAGNETIC CATCH
30	1238002	1	SPLIT HEATER MAGNET MODIFICATION
31	1238101	1	SPLIT HEATER PIVOT PIN
32	A1238207	1	6 x 10 SPLIT HEATER BODY SET
33			
34	1238301	4	SPLIT HEATER PIVOT BUSHING
35	1238504	1	SPLIT HEATER STRIPPER BAR WELDMENT

**6 x 10 SPLIT HEATER ASSEMBLY
220-240V, 50/60Hz, 1Ph**

Parts List

ITEM	PART NO.	QTY.	DESCRIPTION
36	410903	4	DANGER NOT EXPLOSION PROOF LABEL
37	410906	1	DANGER NOT EXPLOSION PROOF TAG LABEL
38	223901	1	HEATER TAG
39	1243801	1	SPLIT HEATER OPERATOR'S MANUAL
40	A1239401	1	FACER PIVOT SPACER KIT

NOTES:

1. ITEMS 38, 39 & 40 NOT SHOWN.
2. SET AND CHECK TEMPERATURE PER SP-9.
3. INSTALL WITH HIGH TEMPERATURE ANTI-SEIZE COMPOUND
4. ITEMS 8 & 9 ARE USED AS REQUIRED; QUANTITIES MAY VARY DUE TO TOLERANCE STACK.
5. ITEMS 10 & 11 ARE INCLUDED AS PART OF #A1238207 6x10 SPLIT HEATER BODY SET.

DRAWING REVISION HISTORY LISTING

PART NO: 1238801

DESCRIPTION: 6 x 10 SPLIT HEATER ASSEMBLY 220-240V, 50/60Hz, 1Ph

<u>APPR.</u>	<u>REV</u>	<u>DATE</u>	<u>BY</u>	<u>DESCRIPTION OF REVISION</u>
TLW	A	07/28/98	MRP	ADDED NOTES #5 & #6
SWB	B	4/3/02	RLE	REMOVED ITEM 33 & REVISED ITEM 32 TO A1238207 SPLIT HEATER BODY SET WHICH CONTAINS BOTH MALE & FEMALE BODIES. THIS WAS NECESSARY SINCE BODIES ARE MANUFACTURED AS MATCHED SETS. REVISED NOTES 5 & 6 ACCORDINGLY & CONSOLIDATED INTO ONE NOTE.
SWB	C	08/26/02	BWW	CORRECTED BY REMOVING ITEM NUMBER 22 FROM FACE OF DRAWING.