

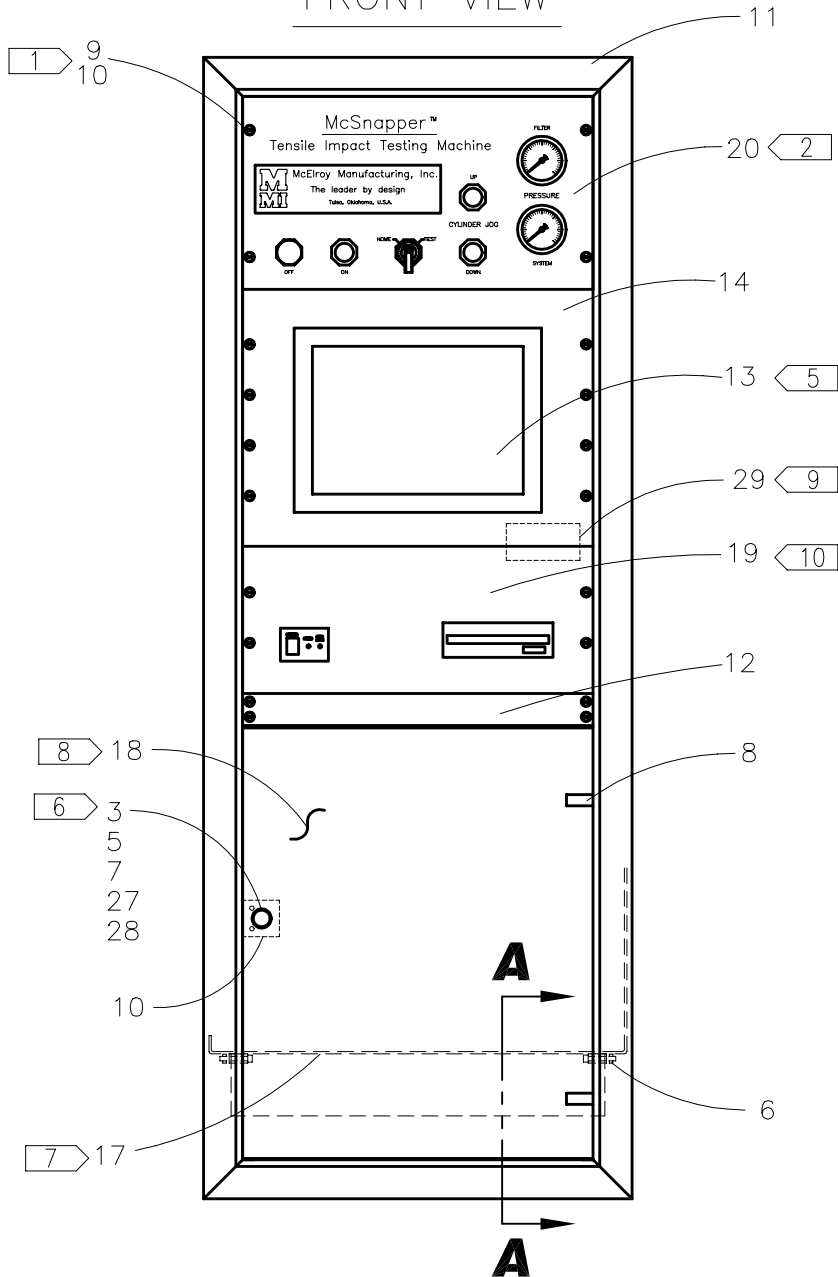


McElroy Manufacturing, Inc.
The leader by design.
Tulsa, Oklahoma U.S.A.

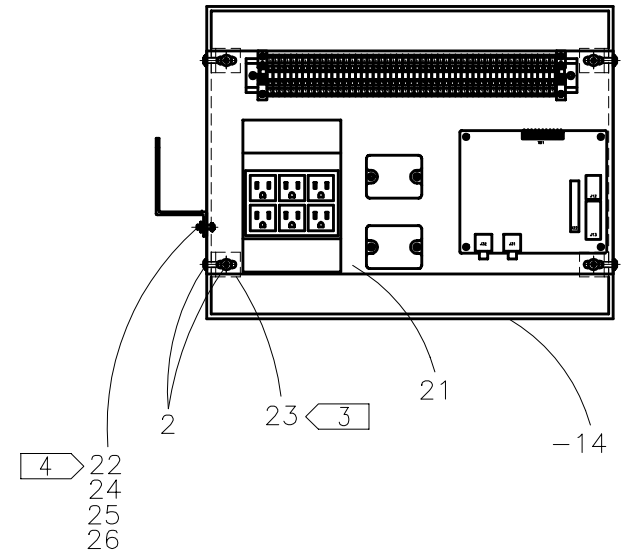
DRAWN: CED	CHECK: BWP	APPRV'D: RAD	DATE: 6/26/98	DWG No: S00400	SHT No: 21	REV No: A	PART No: S00421
ELECTRONIC CABINET ASSEMBLY							CAD No: S00421

NOTE: THIS DRAWING AND THE INFORMATION CONTAINED THEREIN IS THE CONFIDENTIAL AND PROPRIETARY PROPERTY OF McElroy Manufacturing, Inc. THE DRAWING IS NOT TO BE REPRODUCED IN ANY MANNER, SUBMITTED OUTSIDE PARTIES FOR EXAMINATION, OR USED DIRECTLY OR INDIRECTLY FOR THE PURPOSES OTHER THAN THOSE FOR WHICH IT WAS FURNISHED WITHOUT WRITTEN PERMISSION OF McElroy Manufacturing, Inc.

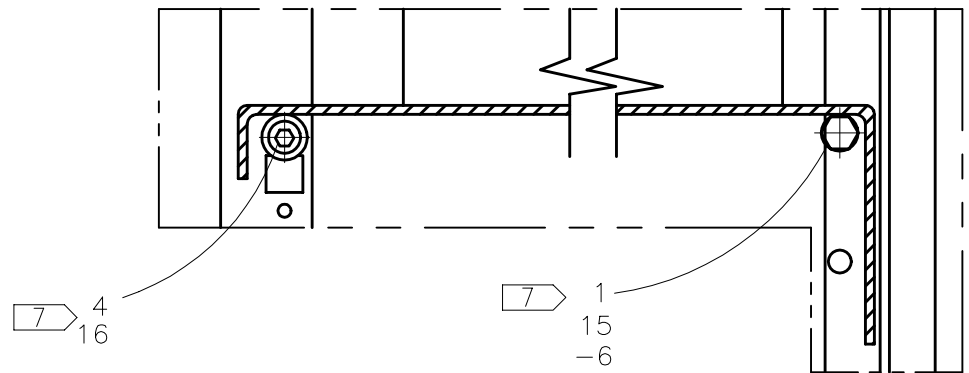
FRONT VIEW



BACK VIEW



SECTION A-A



ELECTRONIC CABINET ASSEMBLYPARTS LIST

ITEM	PART NO.	QTY	DESCRIPTION
	S00421		ASSEMBLY
1	MAA00006	2	1/4-20NC x 1-1/2" LG HHCS
2	MAE00091	8	1/4-28NF x 1/2" LG BHSCS
3	MAE00020	1	#8-32NC x 3/4" LG BHSCS
4	MAH00115	2	#12 x 1" LG HHSSMS
5	MBF00005	4	1/4" FLAT WASHER
6	MBA00005	2	1/4-20NC HEX NUT
7	MJP00014	1	KNOB W/SCREW
8	MLA00086	1	HINGE KIT
9	MLA00087	22	FIXING SCREWS
10	MLA00088	22	CAPTIVE NUTS
11	MLA00157	1	ELECTRICAL BOX
12	MQE00053	1	RACKMOUNT KEYBOARD
13	MQE00054	1	14" MONITOR
14	MQE00055	1	RACKMOUNT MONITOR ENCLOSURE
15	S00207	2	SHELF SUPPORT
16	S00216	2	LOWER SHELF REAR SUPPORT
17	S00218	1	ELECTRONICS CABINET SHELF
18	S00219	1	ELECTRONICS CABINET DOOR
19	S00414	1	PC MODIFICATION ASSEMBLY
20	S00415	1	OPERATOR PANEL ASSEMBLY
21	S00416	1	WIRING PANEL ASSEMBLY
22	S00422	1	AMPLIFIER BRACKET
23	S00423	4	WIRING PANEL BRACKET
24	MAE00019	2	#8-32NC x 5/8" LG BHSCS
25	MBA00003	2	#8-32NC HEX NUT
26	MBE00003	2	#8 LOCK WASHER
27	MJP00029	1	MAGNET
28	S00425	1	MAGNETIC LATCH BRACKET
29	829201	1	DANGER HIGH VOLTAGE LABEL

ELECTRONIC CABINET ASSEMBLY**NOTES:**

1. ITEMS #9 & #10 ARE USED TO MOUNT ITEMS #12, #14, #19, & #20.
TO INSTALL ITEM #10 SNAP FLANGES VERTICALLY ORIENTED INTO THE CABINET FRONT RAIL FROM THE INSIDE OF THE CABINET.
2. MOUNT ITEM #20 AT THE HIGHEST POINT ON THE CABINET RAILING. PROCEED MOUNTING ITEMS #14, #19, & #12 LEAVING AS LITTLE GAP AS POSSIBLE BETWEEN EACH ITEM.
3. DRILL FOUR 9/32 DIA HOLES THROUGH SIDES OF ITEM #14. MOUNT ITEM #21 USING MOUNTING BRACKETS ITEM #23. LEAVE A MINIMUM OF 3/4" CLEARANCE, FOR MONITOR CABLES BELOW ITEM #21.
4. ATTACH ITEM #22 TO THE OUTSIDE SURFACE OF ITEM #14 WITH ITEMS #24, #25, & #26 FROM THE INSIDE. MOUNT ITEM #22 4-1/2" FROM THE BACK AND 3" FROM THE BOTTOM.
5. REMOVE SWIVEL BASE FROM MONITOR. ASSEMBLE MONITOR ENCLOSURE AND ADJUST RAILS, SO THAT MONITOR IS SECURED AND CENTERED IN THE VIEWING WINDOW.
6. DISCARD SCREW THAT IS INCLUDED WITH ITEM 7.
7. LOCATE ITEMS #1, #4, #6, #15, & #16 USING EXISTING HOLES IN CABINET VERTICAL RAIL MEMBER. LOCATE SO TOP OF ITEM 17 IS APPROXIMATELY 8" ABOVE THE BOTTOM OF CABINET EXTERIOR.
8. MOUNT ITEM #18 AT THE LOWEST POINT ON THE CABINET RAILING, LEAVING THE GAP BETWEEN #18 & #12.
9. MOUNT ITEM #29, LABEL, NEXT TO BACK DOOR LATCHES.
10. REMOVE RUBBER FEET BEFORE MOUNTING.

DRAWING REVISION HISTORY LISTING

PART NO: S00421

DESCRIPTION: ELECTRONIC CABINET ASSEMBLY

<u>APPR.</u>	<u>REV</u>	<u>DATE</u>	<u>BY</u>	<u>DESCRIPTION OF REVISION</u>
CED	A	05/11/99	AH	REVISED NOTES #3, #4, & #5. ADDED NOTE #10. DELETED SIDE DRILLED HOLE DETAILS, AND ADDED IN REVISED NOTES- HOW TO LOCATE, DRILL, AND MOUNT ITEMS #21 & #22.