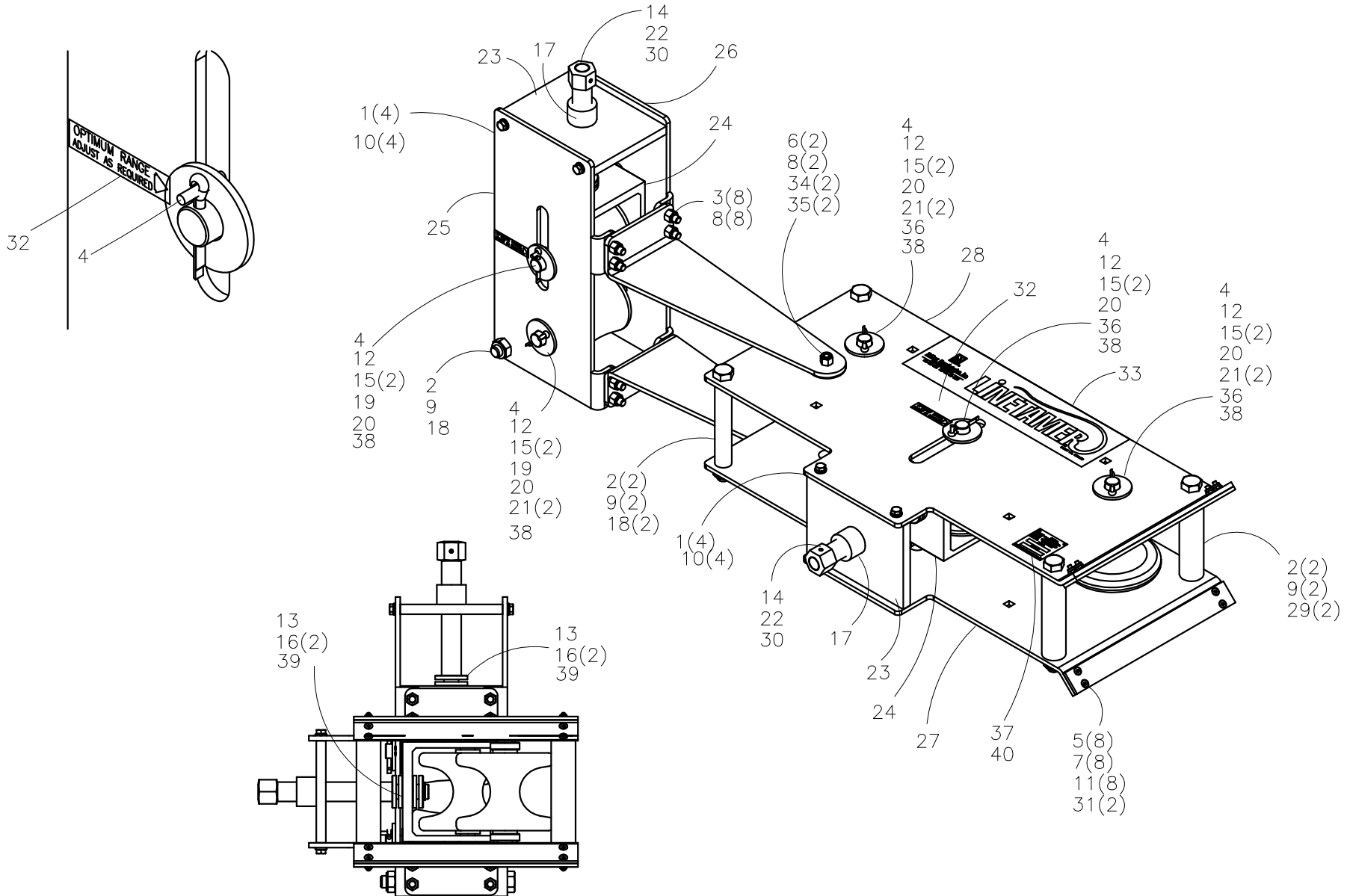




McElroy Manufacturing, Inc.
 The leader by design.
 Tulsa, Oklahoma U.S.A.

DRAWN: AH	CHECK: RRM	APPRV'D: JRP	DATE: 10/01/98	DWG No: LT0122	SHT No: 1A	REV No: D	PART No: LT0122
2" IPS LineTamer ASSEMBLY							CAD No: LT0122

NOTE: THIS DRAWING AND THE INFORMATION CONTAINED THEREIN IS THE CONFIDENTIAL AND PROPRIETARY PROPERTY OF McElroy Manufacturing, Inc. THE DRAWING IS NOT TO BE REPRODUCED IN ANY MANNER, SUBMITTED OUTSIDE PARTIES FOR EXAMINATION, OR USED DIRECTLY OR INDIRECTLY FOR THE PURPOSES OTHER THAN THOSE FOR WHICH IT WAS FURNISHED WITHOUT WRITTEN PERMISSION OF McElroy Manufacturing, Inc.

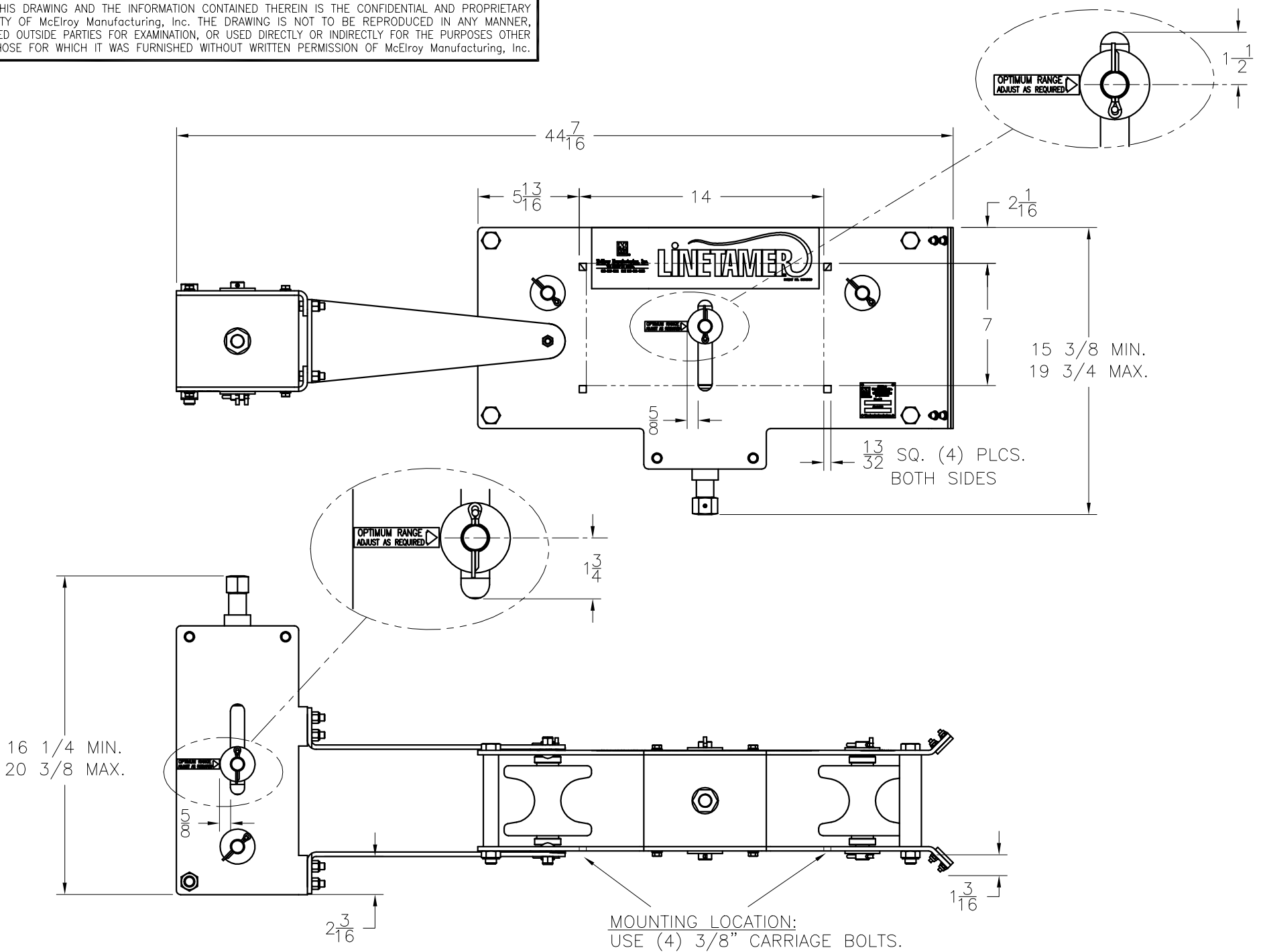




McElroy Manufacturing, Inc.
The leader by design.
Tulsa, Oklahoma U.S.A.

DRAWN: AH	CHECK: RRM	APPRV'D: JRP	DATE: 10/01/98	DWG No: LT0122	SHT No: 1B	REV No: D	PART No: LT0122
2" IPS LineTamer ASSEMBLY							CAD No: LT0122

NOTE: THIS DRAWING AND THE INFORMATION CONTAINED THEREIN IS THE CONFIDENTIAL AND PROPRIETARY PROPERTY OF McElroy Manufacturing, Inc. THE DRAWING IS NOT TO BE REPRODUCED IN ANY MANNER, SUBMITTED OUTSIDE PARTIES FOR EXAMINATION, OR USED DIRECTLY OR INDIRECTLY FOR THE PURPOSES OTHER THAN THOSE FOR WHICH IT WAS FURNISHED WITHOUT WRITTEN PERMISSION OF McElroy Manufacturing, Inc.



2" IPS LineTamer™ ASSEMBLYParts List

ITEM	PART NO.	QTY.	DESCRIPTION
	LT0122		ASSEMBLY
1	MAB00033	8	5/16-18NC X 1" LG HHCS
2	MAB00122	5	5/8-11NC X 6 1/2" LG HHCS
3	MAB00065	8	3/8-16NC X 1 1/4" LG HHCS
4	MCG00005	5	3/16 X 1" LG ROLL PIN
5	MAH00105	8	#10-24NC X 3/4" LG FHSCS 18-8SS
6	MAI00004	2	3/8-16NC X 1" LG CARRIAGE BOLT
7	MBC00004	8	#10-24NC MACHINE SCR NYL LK NUT
8	MBC00007	10	3/8-16NC FINISH HEX NYL LK NUT
9	MBC00011	5	5/8-11NC FINISH HEX NYL LK NUT
10	MBE00006	8	5/16" REG SPLT LK WASHER STL PL
11	MBF00004	8	#10 TYPE 'A' WIDE FLAT WASHER STL PL
12	MBF00012	5	3/4" TYPE 'A' WIDE FLAT WASHER STL PL
13	MCB00003	2	SNAP RING
14	MCG00006	2	3/16" DIA X 1 1/4" LG ROLL PIN
15	MCH00003	10	3/16" DIA X 1 1/2" LG COTTER PIN
16	MDM00023	4	THRUST BEARING
17	MJM00029	2	1"-5 ACME THREADED INSERT
18	LT0111	3	MAIN PLATE SPACER
19	LT011201	2	2" IPS REROUND ROLLER ASSEMBLY
20	LT0115	5	ROLLER SHAFT
21	LT0117	6	ROLLER SHAFT SPACER
22	LT0118	2	ROLLER ADJUSTMENT SHAFT
23	LT0119	2	THREAD SUPPORT PLATE
24	LT0123	2	COMPRESSION FRAME WELDMENT
25	LT0124	1	FRONT REROUNDER FRAME
26	LT0125	1	BACK REROUNDER FRAME
27	LT0126	1	LOWER MAIN FLANGE PLATE
28	LT0127	1	UPPER MAIN FLANGE PLATE
29	LT0136	2	MAIN PLATE SPACER
30	LT0137	2	HEX DRIVE
31	LT0138	2	WEAR STRIP
32	LT0140	2	2" IPS LINETAMER POSITION LABEL
33	LT0141	1	LINETAMER LOGO LABEL
34	LT0142	2	REROUNDER PIVOT BRACKET
35	MBG00066	2	NYLON SPACER
36	LT0144	3	2 IPS STRAIGHTENING ROLLER ASSEMBLY
37	PL1-LT0122	1	NAMEPLATE
38	LT0160	5	3/4" WASHER MODIFICATION
39	MBG00058	2	PRECISION SUPPORT WASHER
40	MAH00006	4	#6 x 1/4 LG. DRIVE SCREW

DRAWING REVISION HISTORY LISTING

PART NO: LT0122
DESCRIPTION: 2" IPS LineTamer ASSEMBLY

<u>APPR.</u>	<u>REV</u>	<u>DATE</u>	<u>BY</u>	<u>DESCRIPTION OF REVISION</u>
TLW	A	1/11/99	AH	CREATED DETAIL VIEWS FOR INSTALLING LABELS FOR CLARITY. REMOVED ITEM 4, MAH00093 STICK SCREWS FOR MOUNTING NAME PLATE. NAME PLATE SUPPLIED WITH ADHESIVE BACKING.
JRP	B	5/5/00	BWW	REVISED DRAWING TO ADD ROLL PINS, #4, AND MODIFIED WASHERS #38. THESE ARE TO KEEP THE SHAFTS FROM TURNING. CHANGE QTY. OF ITEM #12 FROM (10) TO (5). # 19 WAS LTO112 ROLLER.
TLW	C	8/3/00	BWW	ADDED #39 MBG00058 QTY. 2 SUPPORT WASHER TO AVOID SNAP RING BENDING.
TLW	D	12/29/00	RLE	REVISED ITEM #37 FROM 410904 NAMEPLATE TO PL1-LT0122 NAMEPLATE & ADDED ITEM #40 MAH00006 QTY. (4). TO MOUNT NAMEPLATE.