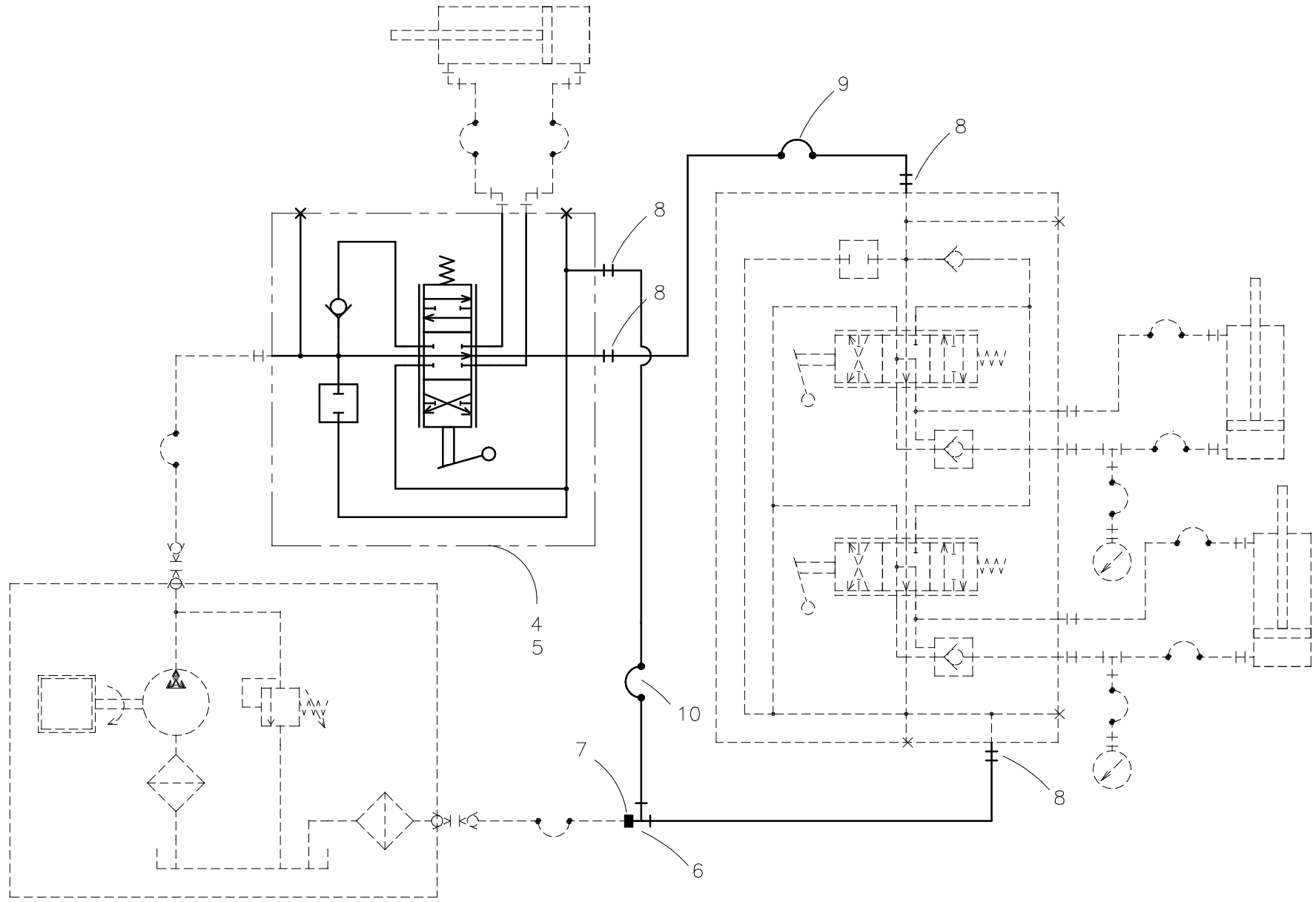




**McElroy Manufacturing, Inc.**  
 The leader by design.  
 Tulsa, Oklahoma U.S.A.

DRAWN: SS	CHECK: JRP	APPRV'D: JRP	DATE: 6/18/97	DWG No: LT0105	SHT No: 1	REV No:	PART No: LT0105
THREADING ROLLER VALVE INSTALLATION							CAD No: LT0105

NOTE: THIS DRAWING AND THE INFORMATION CONTAINED THEREIN IS THE CONFIDENTIAL AND PROPRIETARY PROPERTY OF McElroy Manufacturing, Inc. THE DRAWING IS NOT TO BE REPRODUCED IN ANY MANNER, SUBMITTED OUTSIDE PARTIES FOR EXAMINATION, OR USED DIRECTLY OR INDIRECTLY FOR THE PURPOSES OTHER THAN THOSE FOR WHICH IT WAS FURNISHED WITHOUT WRITTEN PERMISSION OF McElroy Manufacturing, Inc.



**LineTamer™ THREADING ROLLER  
VALVE INSTALLATION**

Parts List

ITEM	PART NO.	QTY.	DESCRIPTION
	<b>LT0105</b>	<b>1</b>	<b>ASSEMBLY</b>
1	LT0044	1	THREAD ROLLER VALVE BRACKET
2	MAB00010	3	1/4-20NC x 2-1/2 LG. HHCS
3	MBC00005	3	1/4-20NC FINISHED HEX NYLON LOCK NUT
4	MEF00073	1	DIRECTIONAL VALVE LESS HANDLE
5	MEF00077	1	VALVE HANDLE LEVER
6	MFB00018	1	6MJIC/6MJIC/6FSJIC TEE
7	MFB00051	1	6FJIC CAP
8	MFC00027	4	8MSAE/6MJIC ADAPTER
9	HBBDDD022	1	HOSE ASSEMBLY
10	HBBDDD048	1	HOSE ASSEMBLY
11	MAB00064	2	3/8-16NC x 1" LG. HHCS
12	MBC00007	2	3/8-16NC FINISHED HEX NYLON LOCK NUT

**NOTES:**

- ITEMS 1, 2, 3, 5, 11 & 12 NOT SHOWN.

## DRAWING REVISION HISTORY LISTING

**PART NO:** LT0105

**DESCRIPTION:** LineTamer™ THREADING ROLLER VALVE INSTALLATION

<u>APPR.</u>	<u>REV</u>	<u>DATE</u>	<u>BY</u>	<u>DESCRIPTION OF REVISION</u>
JRP	--	8/25/97	RLE	ADDED ITEM 11, MAA00064 QTY. (2), & ITEM 12, MBC00007 QTY. (2), TO MATERIAL LIST THESE ITEMS NOT SHOWN ON DRAWING.
SWB	--	11/11/02	RLE	REVISED ITEMS #2 & #11 FROM MAA TO MAB TO MATCH CURRENT PART NUMBERS.