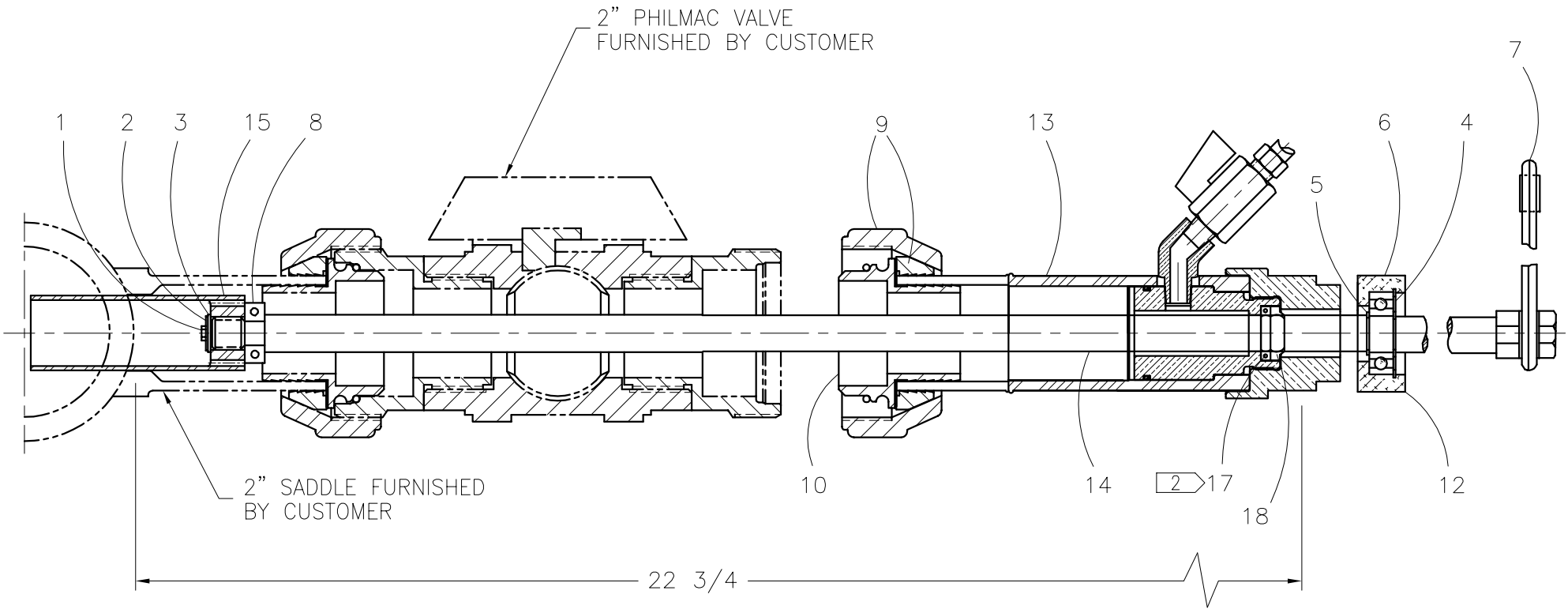




McElroy Manufacturing, Inc.
The leader by design.
Tulsa, Oklahoma U.S.A.

DRAWN: TLW	CHECK: BWP	APPRV'D: B	DATE: 8/25/95	DWG No: 220000	SHT No: 5	REV No: C	PART No: 220005
2" IPS DRS8100 WATER HOT TAPPING TOOL ASSEMBLY							CAD No: 220005

NOTE: THIS DRAWING AND THE INFORMATION CONTAINED THEREIN IS THE CONFIDENTIAL AND PROPRIETARY PROPERTY OF McElroy Manufacturing, Inc. THE DRAWING IS NOT TO BE REPRODUCED IN ANY MANNER, SUBMITTED OUTSIDE PARTIES FOR EXAMINATION, OR USED DIRECTLY OR INDIRECTLY FOR THE PURPOSES OTHER THAN THOSE FOR WHICH IT WAS FURNISHED WITHOUT WRITTEN PERMISSION OF McElroy Manufacturing, Inc.



**2" IPS DRS8100 WATER
HOT TAPPING TOOL ASSEMBLY**

PARTS LIST

ITEM	PART NO.	QTY.	DESCRIPTION
	220005		ASSEMBLY
1	MAH00091	1	1/4-20NC x 1/2" LG HHCS W/ NYLON LOCK
2	MBF00005	1	1/4" TYPE 'A' WIDE FLAT WASHER
3	MBG00025	1	3/8" THRUST WASHER
4	MCA00007	1	INT SNAP RING
5	MCB00003	2	EXT SNAP RING
6	MDM00028	1	BALL BEARING
7	MJL00004	1	7/8" & 3/4" RATCHET BOX WRENCH
8	MJQ00056	1	CLAMP COLLAR
9	MMD00069	1	VALVE NUT W/ SPLIT RING
10	MMD00070	1	VALVE INSERT W/O RING
11	224301	1	2" WATER HTT TOOL BOX
12	220701	1	BEARING HOUSING
13	22120305	1	GLAND FITTING ASSY
14	221303	1	SHAFT
15	221502	1	TOOTHED CUTTER
16	224201	1	INSTALLATION PLUG
17	MDL00023		SEAL
18	MDL00024		WIPER

NOTES:

1. ITEMS #11 & #16 NOT SHOWN.
2. ITEMS #17 & #18 ARE PART OF ITEM #13 (GLAND FITTING ASSY)

DRAWING REVISION HISTORY LISTING

PART NO: 220005

DESCRIPTION: 2" IPS DRS8100 WATER HOT TAPPING TOOL ASSEMBLY

<u>APPR.</u>	<u>REV</u>	<u>DATE</u>	<u>BY</u>	<u>DESCRIPTION OF REVISION</u>
TLW	A	11/23/98	TGW	CHANGED DWG DESCRIPTION FROM "2" HOT TAPPING TOOL ASSEMBLY - 8000 (WATER)" TO "2" IPS DRS8100 WATER HOT TAPPING TOOL ASSEMBLY".
TLW	B	2/24/00	BWW	CORRECTED DRAWING TO SHOW LONGER CUTTER 221502.
SWB	C	2/11/02	ALK	UPDATED VIEW TO MATCH 225007 GLAND FITTING SUB-ASSEMBLY ON 5/29/01