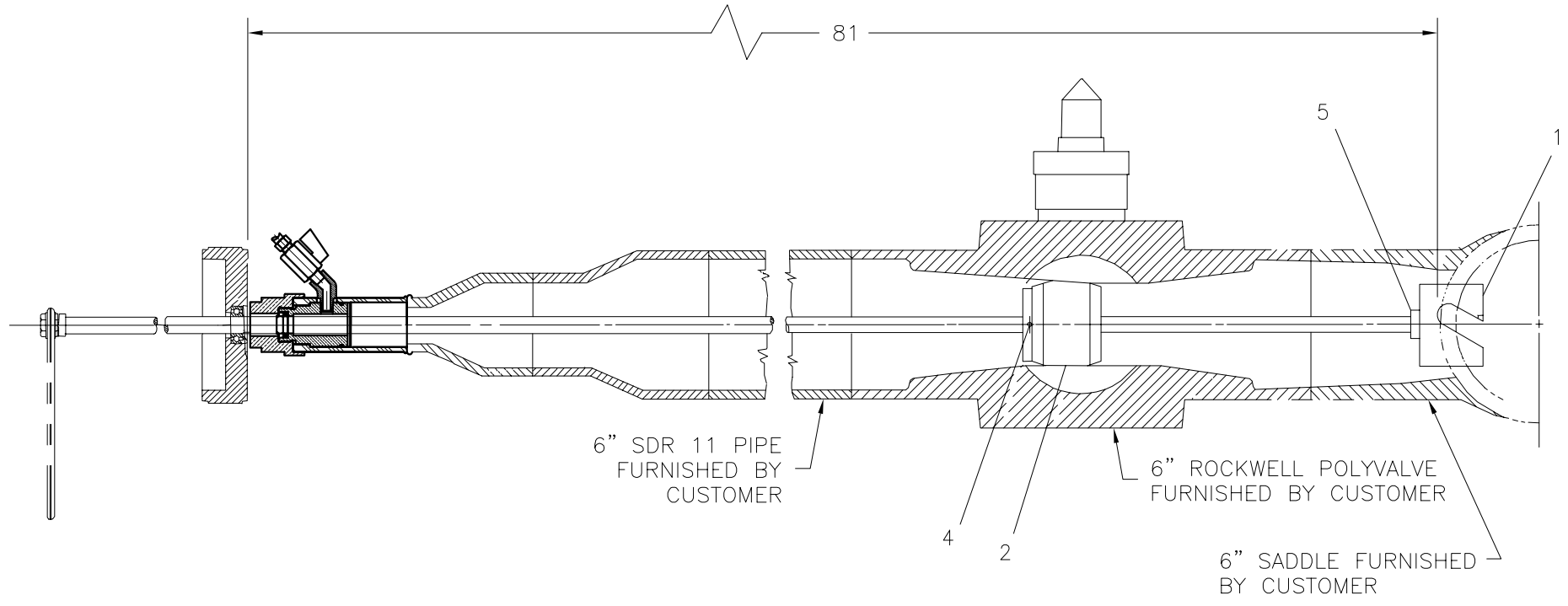




**McElroy Manufacturing, Inc.**  
The leader by design.  
Tulsa, Oklahoma U.S.A.

DRAWN: TLW	CHECK: BWP	APPRV'D: B	DATE: 6/01/95	DWG No: 220300	SHT No: 5	REV No: A	PART No: 220305
6" HOT TAPPING TOOL POLYVALVE CONVERSION KIT							CAD No: 220305

NOTE: THIS DRAWING AND THE INFORMATION CONTAINED THEREIN IS THE CONFIDENTIAL AND PROPRIETARY PROPERTY OF McElroy Manufacturing, Inc. THE DRAWING IS NOT TO BE REPRODUCED IN ANY MANNER, SUBMITTED OUTSIDE PARTIES FOR EXAMINATION, OR USED DIRECTLY OR INDIRECTLY FOR THE PURPOSES OTHER THAN THOSE FOR WHICH IT WAS FURNISHED WITHOUT WRITTEN PERMISSION OF McElroy Manufacturing, Inc.



**6" HOT TAPPING TOOL POLYVALVE CONVERSION KIT**PARTS LIST

ITEM	PART NO.	QTY.	DESCRIPTION
	<b>220305</b>	<b>1</b>	<b>Assembly</b>
1	221702	1	Toothed Cutter
2	222201	1	Cutter Guide
3	222302	2	Facer Rest Button Ext.
4	MCG00006	1	3/16" Dia. x 1-1/4" Lg. Roll Pin
5	MJQ00056	1	Clamp Collar

## NOTE:

1. This Kit Is Used To Convert A Standard 6" Hot Tapping Tool To A 6" Polyvalve Hot Tapping Tool.

## DRAWING REVISION HISTORY LISTING

**PART NO:** 220305

**DESCRIPTION:** 6" HOT TAPPING TOOL POLYVALVE CONVERSION KIT

<u>APPR.</u>	<u>REV</u>	<u>DATE</u>	<u>BY</u>	<u>DESCRIPTION OF REVISION</u>
SWB	-	9/05/97	BB	REVISED ITEM #2 221701 TO 221702.
SWB	A	2/11/02	ALK	UPDATED VIEW TO MATCH 225007 GLAND FITTING SUB-ASSEMBLY ON 5/29/01