

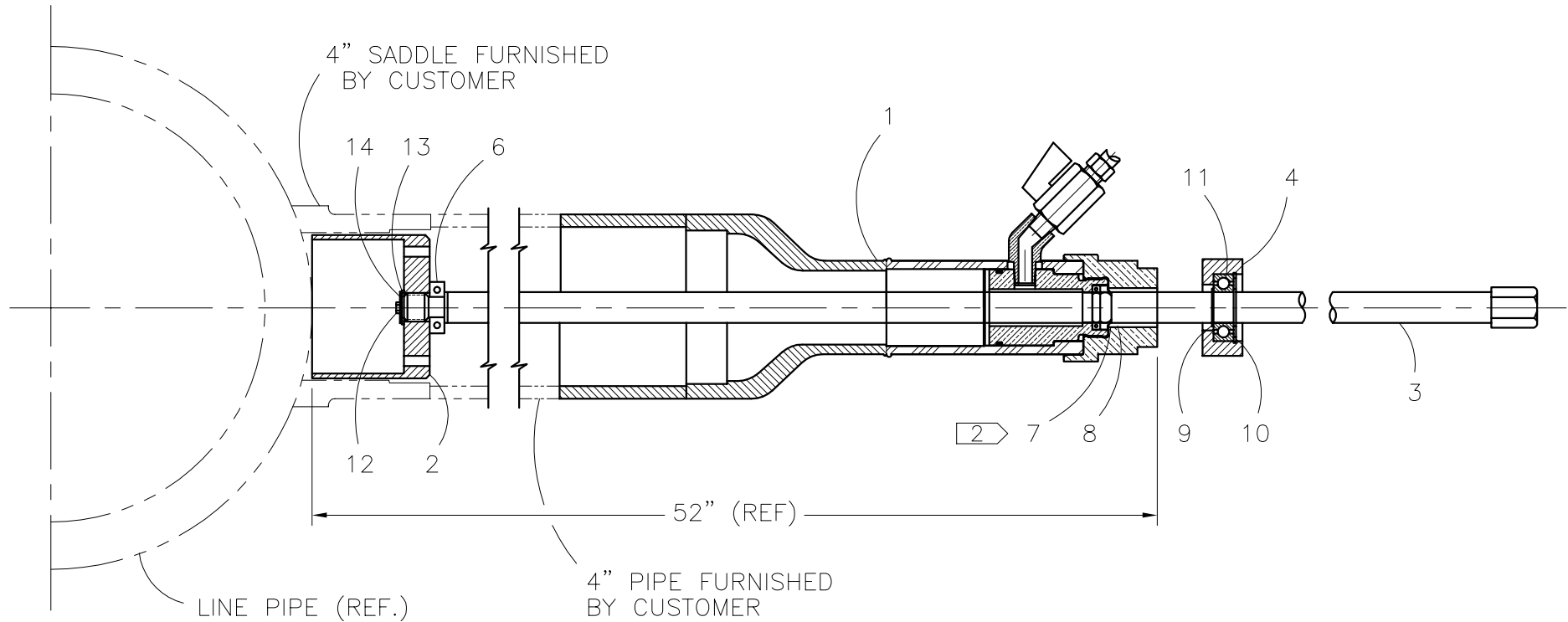


**McElroy Manufacturing, Inc.**  
 The leader by design.  
 Tulsa, Oklahoma U.S.A.

DRAWN: TGW	CHECK: TLW	APPRV'D: SWB	DATE: 11/19/98	DWG No: 220200	SHT No: 6	REV No: C	PART No: TABULATED
4" HOT TAPPING TOOL ASSEMBLIES							CAD No: 220200

NOTE: THIS DRAWING AND THE INFORMATION CONTAINED THEREIN IS THE CONFIDENTIAL AND PROPRIETARY PROPERTY OF McElroy Manufacturing, Inc. THE DRAWING IS NOT TO BE REPRODUCED IN ANY MANNER, SUBMITTED TO OUTSIDE PARTIES FOR EXAMINATION, OR USED DIRECTLY OR INDIRECTLY FOR THE PURPOSES OTHER THAN THOSE FOR WHICH IT WAS FURNISHED WITHOUT WRITTEN PERMISSION OF McElroy Manufacturing, Inc.

ASSY NO.	DESCRIPTION	ITEM #1
220206	MED. DENSITY 2406 HTT ASSY	22120506
220207	HIGH DENSITY 3408 HTT ASSY	22120507
220209	DRISCOPIPE-8100 HTT ASSY	22120513
220213	DRS8100 SDR9.33 HTT ASSY	22120517



**4" HOT TAPPING TOOL ASSEMBLIES**PARTS LIST

ITEM	PART NO.	QTY	DESCRIPTION
	<b>TABULATED</b>		<b>ASSEMBLY</b>
1	TABULATED	1	GLAND FITTING ASSEMBLY
2	221702	1	TOOTHED CUTTER
3	221402	1	SHAFT
4	220701	1	BEARING HOUSING
5	220605	1	STORAGE BOX
6	224101	1	CLAMP COLLAR MODIFICATION
7	MDL00023		SEAL
8	MDL00024		WIPER
9	MCB00003	2	EXT SNAP RING
10	MCA00007	1	INT SNAP RING
11	MDM00028	1	BALL BEARING
12	MAH00091	1	1/4-20NC x 1/2" LG HHCS W/ NYLON LOCK
13	MBG00025	1	3/8" THRUST WASHER
14	MBF00005	1	1/4" TYPE 'A' WIDE FLAT WASHER
15	MJL00005	1	1/2" DRIVE RATCHET WRENCH
16	MJL00006	1	7/8" SOCKET WITH 1/2" SQ. DRIVE
17			

**NOTES:**

1. ITEMS #5, #15 AND #16 ARE NOT SHOWN.
2. ITEMS #7 AND #8 ARE PART OF ITEM #1 (GLAND FITTING ASSEMBLY).

## DRAWING REVISION HISTORY LISTING

**PART NO:** 220200  
**DESCRIPTION:** 4" HOT TAPPING TOOL ASSEMBLIES

<u>APPR.</u>	<u>REV</u>	<u>DATE</u>	<u>BY</u>	<u>DESCRIPTION OF REVISION</u>
SWB	-	11/19/98	TGW	COMBINED ALL 4" HOT TAPPING TOOL ASSEMBLIES ONTO SHEET 6. DELETED ASSEMBLY #'s 220205 & 220208. ADDED ASSEMBLY #'s 220209 THRU 220212.
SWB	-	05/12/99	TLW	ADDED ASSEMBLY NUMBER 220213 DRS8100 SDR9.33
SWB	A	2/11/02	ALK	UPDATED VIEW TO MATCH 225007 GLAND FITTING SUB-ASSEMBLY ON 5/29/01.
SWB	B	01/14/03	BWW	REVISED TO REMOVE ITEM 17 MCG00005 WHICH WAS DETERMINED TO BE UNNECESSARY & ALSO TO BE CONSISTENT WITH ALL OTHER TAPPING TOOL ASSEMBLIES.
SWB	C	12/04/06	PJD	REVISED DRS6500 SDR11 TO MED. DENSITY 2406, PLX3408 SDR11 TO HIGH DENSITY 3408, AND DRS8100 SDR11 TO DRISCOPE-8100 AND DELETED ASSY NO.: 220210, 220211, AND 220212 TO CONSOLIDATE LIKE MATERIAL TYPES.