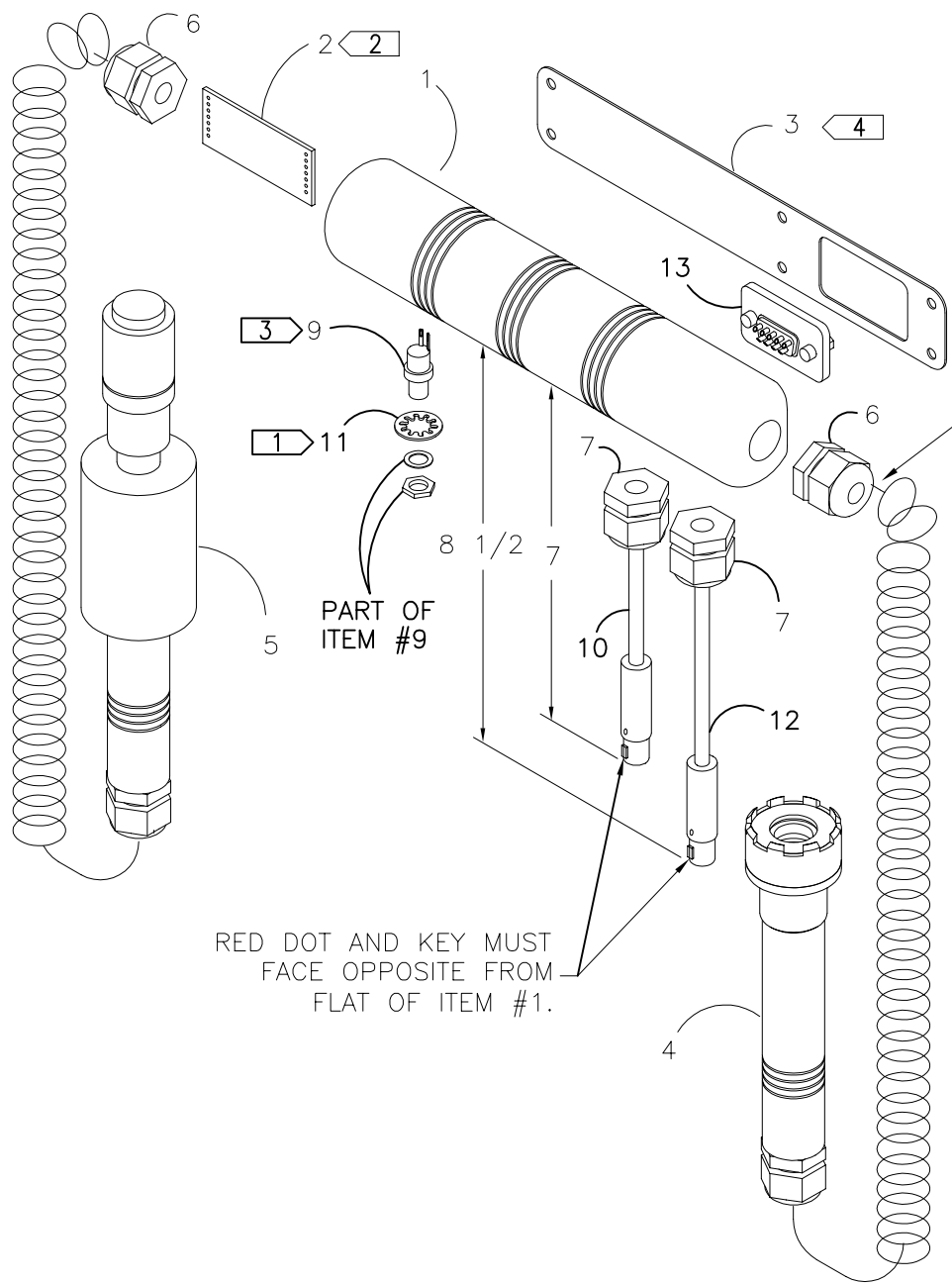




McElroy Manufacturing, Inc.
 The leader by design.
 Tulsa, Oklahoma U.S.A.

DRAWN: TLW	CHECK: TMT	APPRV'D: JRP	DATE: 03/10/99	DWG No: DL3000	SHT No: 1A	REV No: C	PART No: DL3001
DataLogger PROBE/DATA INTERFACE MODULE ASSEMBLY							CAD No: DL3001

NOTE: THIS DRAWING AND THE INFORMATION CONTAINED THEREIN IS THE CONFIDENTIAL AND PROPRIETARY PROPERTY OF McElroy Manufacturing, Inc. THE DRAWING IS NOT TO BE REPRODUCED IN ANY MANNER, SUBMITTED OUTSIDE PARTIES FOR EXAMINATION, OR USED DIRECTLY OR INDIRECTLY FOR THE PURPOSES OTHER THAN THOSE FOR WHICH IT WAS FURNISHED WITHOUT WRITTEN PERMISSION OF McElroy Manufacturing, Inc.



CORD CURL SHOULD BEGIN IMMEDIATELY OUT OF GRIP, NO STRAIGHT PORTION. TYP (2) PLCS.

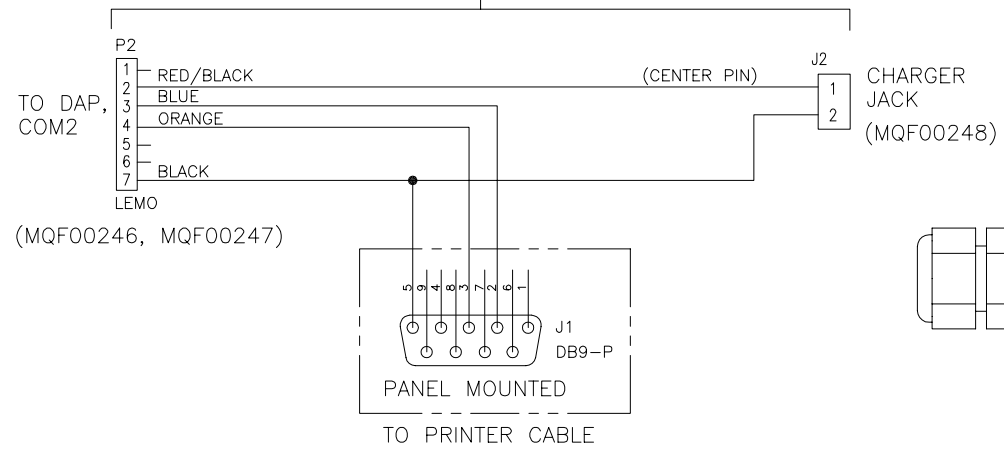
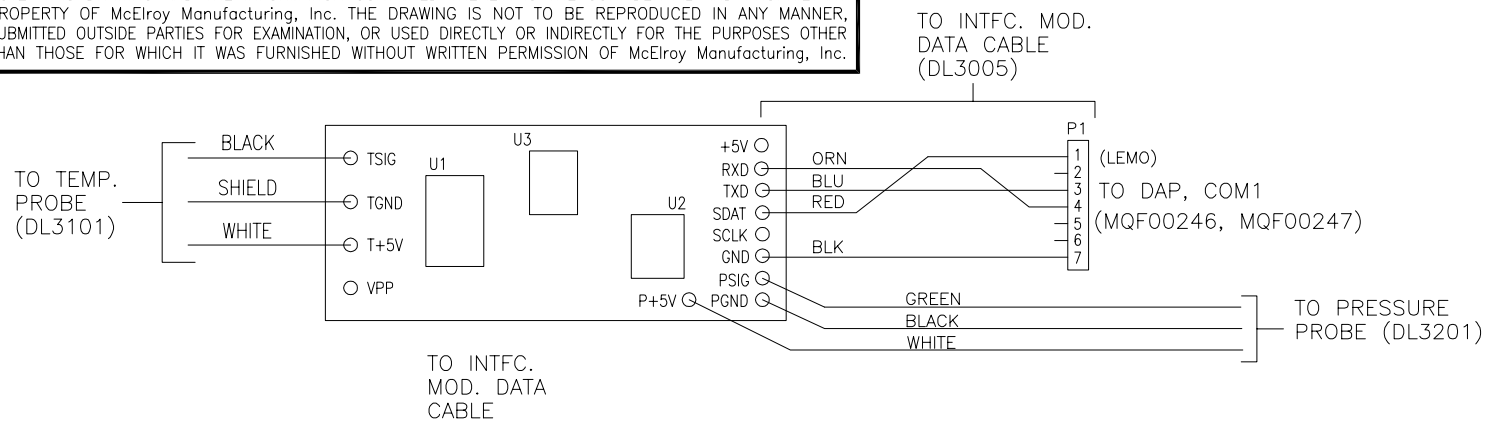
RED DOT AND KEY MUST FACE OPPOSITE FROM FLAT OF ITEM #1.



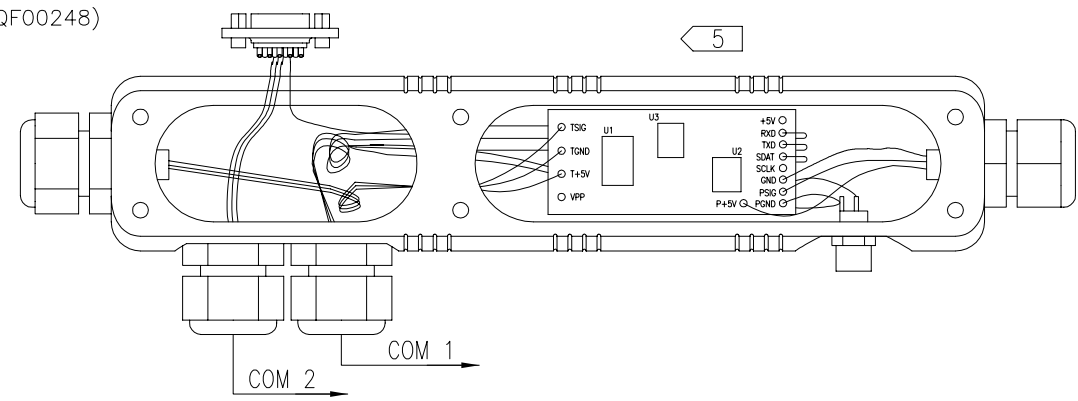
McElroy Manufacturing, Inc.
The leader by design.
Tulsa, Oklahoma U.S.A.

DRAWN: TLW	CHECK: TMT	APPRV'D: JRP	DATE: 03/10/99	DWG No: DL3000	SHT No: 1B	REV No: C	PART No: DL3001
DataLogger PROBE/DATA INTERFACE MODULE ASSEMBLY							CAD No: DL3001

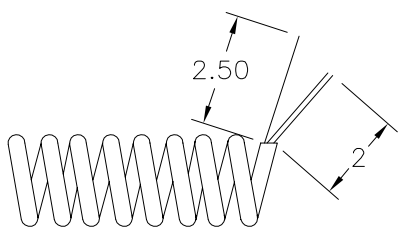
NOTE: THIS DRAWING AND THE INFORMATION CONTAINED THEREIN IS THE CONFIDENTIAL AND PROPRIETARY PROPERTY OF McElroy Manufacturing, Inc. THE DRAWING IS NOT TO BE REPRODUCED IN ANY MANNER, SUBMITTED OUTSIDE PARTIES FOR EXAMINATION, OR USED DIRECTLY OR INDIRECTLY FOR THE PURPOSES OTHER THAN THOSE FOR WHICH IT WAS FURNISHED WITHOUT WRITTEN PERMISSION OF McElroy Manufacturing, Inc.



INTERFACE MODULE WIRING DIAGRAM

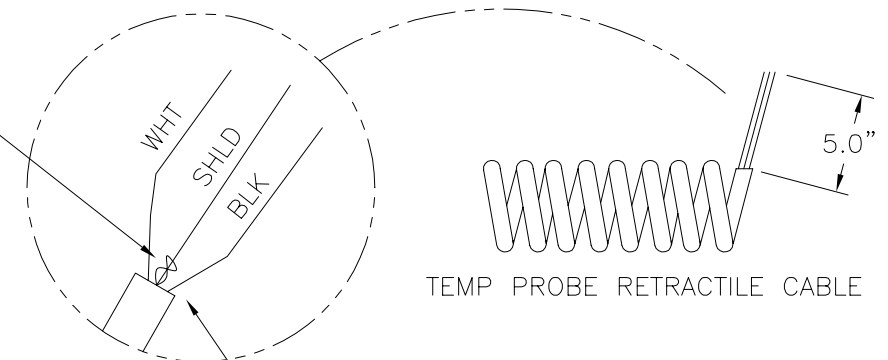


CUT BLACK & GREEN WIRES 2"
CUT WHITE WIRE 2.50"



PRESSURE PROBE RETRACTILE CABLE

CUT ONE SHIELD TO 1"
LONG AND TWIST AROUND
OTHER SHIELD AND SOLDER.
USE HEAT SHRINK FOR FULL
LENGTH OF SHIELD WIRE
LESS .125".



TEMP PROBE RETRACTILE CABLE

REMOVE OTHER WIRES &
FOIL BY CUTTING FLUSH
WITH JACKET.

DataLogger™ PROBE/DATA INTERFACE MODULE ASSEMBLYParts List

ITEM	PART NO.	QTY.	DESCRIPTION
	DL3001		ASSEMBLY
1	DL2201	1	JUNCTION BOX/HANDLE
2	DL3002	1	PROBE INTERFACE BOARD ASSEMBLY
3	DL3004	1	JUNCTION BOX GASKET
4	DL3101	1	TEMPERATURE PROBE ASSEMBLY
5	DL3201	1	PRESSURE PROBE ASSEMBLY
6	MLK00059	2	CORD STRAIN RELIEF
7	MLK00076	2	CORD STRAIN RELIEF
8	MLW00010	6 IN	1/16" SHRINK TUBING
9	MQF00248	1	DC POWER JACK CONNECTOR
10	DL3005	1	COM1 INTERFACE MODULE CABLE ASSEMBLY
11	MBE00026	1	5/16 INTERNAL TOOTH LOCK WASHER
12	DL3006	1	COM2 INTERFACE MODULE CABLE ASSEMBLY
13	MQF00250	1	9 PIN MALE D-CONNECTOR

NOTES:

1. PLACE LOCKWASHER, ITEM #11, INSIDE JUNCTION BOX AGAINST SHOULDER OF RECEPTACLE, ITEM #9. APPLY LOCTITE #242 THREAD LOCKER TO THREADS THEN FIRMLY TORQUE RECEPTACLE NUT TO SEAT LOCKWASHER AND PREVENT TURNING OF RECEPTACLE.
2. AFTER WIRING IS COMPLETE CONFORMAL COAT PC BOARD, ITEM #2 AND WRAP IN ANTISTATIC FOAM TO SECURE IT IN JUNCTION BOX.
3. AFTER WIRING USE DOW-CORNING RTV #748 INSIDE THE JUNCTION BOX TO SEAL RECEPTACLE, ITEM #9. KEEP RTV OUT OF THE RECEPTACLE CAVITY.
4. CENTER HOLES OF GASKET, ITEM #3, ON HOLES OF JUNCTION BOX, ITEM #1, AND ADHERE GASKET TO BOX.
5. WRAP CIRCUIT BOARD WITH 3"X3" PIECE OF ULINE FOAM 1/8" MODEL S-789 OR EQUIV.
6. TEST FINISHED ASSEMBLY PER ENGINEERING STANDARD #ES299.

DRAWING REVISION HISTORY LISTING

PART NO: DL3001

DESCRIPTION: DataLogger PROBE/DATA INTERFACE MODULE ASSEMBLY

<u>APPR.</u>	<u>REV</u>	<u>DATE</u>	<u>BY</u>	<u>DESCRIPTION OF REVISION</u>
BEA	A	10/18/99	TLW	REVISED ITEM #7 MLK00076 STRAIN RELIEF FROM QTY 1 TO 2. ADDED ITEM #12 DL3006 INTERFACE MODULE CABLE ASSEMBLY. ADDED ITEM #13 MQF00250 9 PIN D-CONNECTOR MALE. REVISED NOTE 1 TO APPLY LOCTITE #242 TO THREADS. UPDATED DRAWING TO SHOW ITEM #12 AND #13.
RAD	----	02/04/00	BEA	ADDED NOTE 6 "TEST PER ES299".
BA	----	02/07/01	MLM	REVISED ITEM-8 MLN00311 (1/8" BLACK SHRINK TUBING) TO MLW00010 - (1/16" BLACK SHRINK TUBING).
JPD	B	01/17/02	BEA	CHANGED CONNECTION OF RED COM1 WIRE FROM INTERFACE BOARD +5 TERMINAL TO INTERFACE BOARD SDAT TERMINAL.
JPD	C	04/29/02	BEA	CHANGED PRESSURE PROBE WIRE COLORS TO REFLECT CABLE CHANGE IN DL3201 ASSEMBLY, REVISION A.