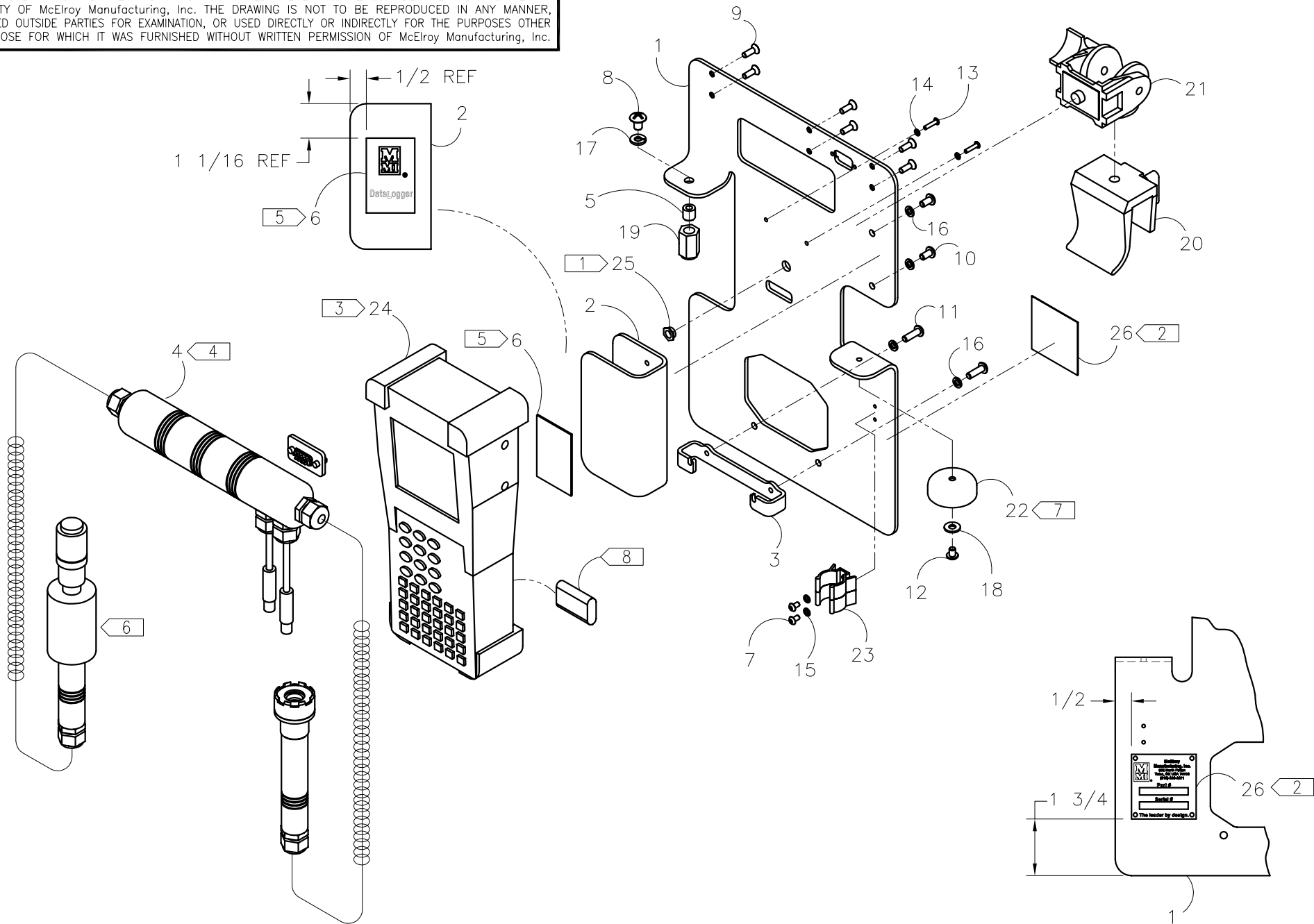




McElroy Manufacturing, Inc.
The leader by design.
Tulsa, Oklahoma U.S.A.

DRAWN: TLW	CHECK: TMT	APPRV'D: JRP	DATE: 03/11/99	DWG No: DL2900	SHT No: 1	REV No: B	PART No: DL2901
DataLogger ASSEMBLY							CAD No: DL2901

NOTE: THIS DRAWING AND THE INFORMATION CONTAINED THEREIN IS THE CONFIDENTIAL AND PROPRIETARY PROPERTY OF McElroy Manufacturing, Inc. THE DRAWING IS NOT TO BE REPRODUCED IN ANY MANNER, SUBMITTED OUTSIDE PARTIES FOR EXAMINATION, OR USED DIRECTLY OR INDIRECTLY FOR THE PURPOSES OTHER THAN THOSE FOR WHICH IT WAS FURNISHED WITHOUT WRITTEN PERMISSION OF McElroy Manufacturing, Inc.



UNLESS NOTED OTHERWISE: (3) PLC. DIM'S .XXX = ±0.005" (2) PLC. DIM'S .XX = ±0.010" FRACTIONAL DIM'S = ±1/32" ANGULAR DIM'S = ±1/4" REMOVE ALL BURRS BREAK ALL SHARP EDGES STAMP OR ETCH P/N ON ALL DETAIL PARTS

MMI NUMBER	ITEM	QTY.	SIZE AND DESCRIPTION

DataLogger ASSEMBLYParts List

ITEM	PART NO.	QTY.	DESCRIPTION
	DL2901		ASSEMBLY
1	DL2301	1	BASE PLATE
2	DL2501	1	DATA WIRE COVER GUARD
3	DL2801	1	PC BRACKET
4	DL3001	1	DATLOG INTERFACE MODULE ASSY
5	DL303	1	THREADED ADAPTER
6	DL801	1	DATLOG MOUNT LABEL
7	MAE00008	2	#6-32NCX1/4LG BHSCS
8	DL3901	1	SCREW MODIFICATION
9	MAH00160	6	#8-32NCX1/2LG FHSCS 18-8 SS
10	MAH00170	2	#10-32NFX3/8LG BHSCS 18-8 SS
11	MAN00031	2	#10-32NFX5/8LG BHSCS 18-8 SS
12	MAN00032	1	#10-32NFX1/4LG BHSCS 18-8 SS
13	MAN00033	2	#4-40NCX1/2LG BHSCS 18-8 SS
14	MBE00001	2	#4 REG SPLIT LOCK WASHER
15	MBE00002	2	#6 REG SPLIT LOCK WASHER
16	MBE00004	4	#10 REG SPLIT LOCK WASHER
17	MBE00005	1	1/4 REG SPLIT LOCK WASHER
18	MBF00004	1	#10 TY 'A' WIDE FLAT WASHER
19	MFH00031	1	1/8FNPT QUICK DISC NIPPLE
20	MJA00014	1	WINDOW POD CLAMP BASE
21	MJA00015	1	TILT HEAD CLAMP PIVOT
22	MJQ00290	1	BLACK HIGH TEMP VINYL CAP
23	MLN00389	2	COMPONENT CLIP
24	MQE00060	1	HANDHELD PC
25	MQI00010	1	SELF CLINCHING FLUSH FASTNER
26	PL1-DL2901	1	NAMEPLATE

NOTES:

- DO NOT DEBURR MOUNTING HOLE. PLACE SHANK OF FASTENER INTO MOUNTING HOLE FROM FRONT SIDE OF BASE PLATE. WITH PUNCH AND ANVIL SURFACES PARALLEL, APPLY SUFFICIENT FORCE ONLY TO IMBED HEXAGONAL HEAD FLUSH IN BASE PLATE. DO NOT USE A HAMMER TO INSTALL.
- MARK DATA ON NAME PLATE BEFORE ADHERING TO BASE PLATE WITH PERMANENT ADHESIVE. LOCATE ON BACK OF BASE PLATE PER DETAIL VIEW.
- BEFORE MOUNTING COMPUTER REMOVE CARRYING STRAP BY REMOVING ITS TOP SCREW AND BATTERY COVER. DISCARD RETAINING PIN AND STRAP. REPLACE BATTERY COVER AND TOP SCREW WITH WASHER.
TO MOUNT COMPUTER REMOVE TWO #4-40 X 3/16" LG FLAT HEAD SCREWS FROM THE

DataLogger ASSEMBLYParts List

ITEM	PART NO.	QTY.	DESCRIPTION
			BACK BUMPER (WITH A PHILLIPS SCREWDRIVER) AND DISCARD SCREWS. PUSH THE MOUNTING BRACKET, ITEM #3, INTO THE SLOTS IN THE BOTTOM BUMPERS SO IT ENGAGES THE PINS INSIDE THE SLOTS. THE BOTTOM SCREWS, ITEM #11, ARE LONG IN ORDER TO EXTEND INTO THE BUMPERS. THE TOP SCREWS, ITEM #13, MUST HAVE THE LOCK WASHERS, ITEM #14, INSTALLED OR THEY MAY GO IN TOO DEEP AND DAMAGE THE COMPUTER CASE.
4.			BEFORE MOUNTING JUNCTION BOX, ITEM #4, CHECK THAT ITS NEOPRENE GASKET IS IN PLACE. FIRST ATTACH THE D-9 CONNECTOR JACK TO BASE PLATE. ORIENT PLUG TO MATCH THE CUTOUT SHAPE. USE LOCTITE #242 THREADLOCKER ON JACK SCREWS. AFTER MOUNTING BOX, PLUG CONNECTOR INTO TOP SIDE PORT ON COMPUTER, BEFORE INSTALLING GUARD, ITEM #2.
5.			CENTER DataLogger STICKER, ITEM #6, ON NONTAPPED SIDE OF GUARD, ITEM #2, AND ADHERE PER DETAIL VIEW.
6.			MOUNT PRESSURE PROBE ON QUICK DISCONNECT NIPPLE, ITEM #19, BY PUSHING THEM FIRMLY TOGETHER, DO NOT PULL ON KNURLED RING. TO RELEASE, PULL KNURLED RING FIRMLY TOWARD PROBE HANDLE.
7.			PUNCH 7/32 DIAMETER MOUNTING HOLE IN CENTER OF VINYL CAP, ITEM #22.
8.			ITEM #24 (MQE00060) HAND HELD PC INCLUDES RECHARGEABLE BATTERY PACK (MKG00020).
9.			PROGRAM COMPUTER PER ENGINEERING STANDARD #ES300.
10.			TEST ASSEMBLY PER ENGINEERING STANDARD #ES301.

DRAWING REVISION HISTORY LISTING

PART NO: DL2901
DESCRIPTION: DataLogger ASSEMBLY

<u>APPR.</u>	<u>REV</u>	<u>DATE</u>	<u>BY</u>	<u>DESCRIPTION OF REVISION</u>
TMT	A	06/04/99	TLW	ADDED NOTE 8 ABOUT BATTERY PACK. MOVED STICKER FROM 11/32 TO 1 1/16 TO CENTER ON LONGER GUARD.
RAD	---	02/04/00	BEA	ADDED NOTE 9 "PROGRAM PER ES300", AND NOTE 10 "TEST PER ES301".
TLW	---	01/04/01	BWW	REVISED TO CHANGE ITEM #26 410904 TO PL1-DL2901 TO COMPLY TO NEW NAME PLATE STANDARD.
PJB	B	11/06/03	BEA	CHANGED ITEM #8 FROM MAH00147 TO DL3901 TO ENSURE PRESSURE BLEED OFF.