



**McElroy Manufacturing, Inc.**  
 The leader by design.  
 Tulsa, Oklahoma U.S.A.

DRAWN: DJL    CHECK: BWP    APPR'D: SWB    DATE: 5/4/99    SHT No: 14    REV No: B    PART No: CTS15014

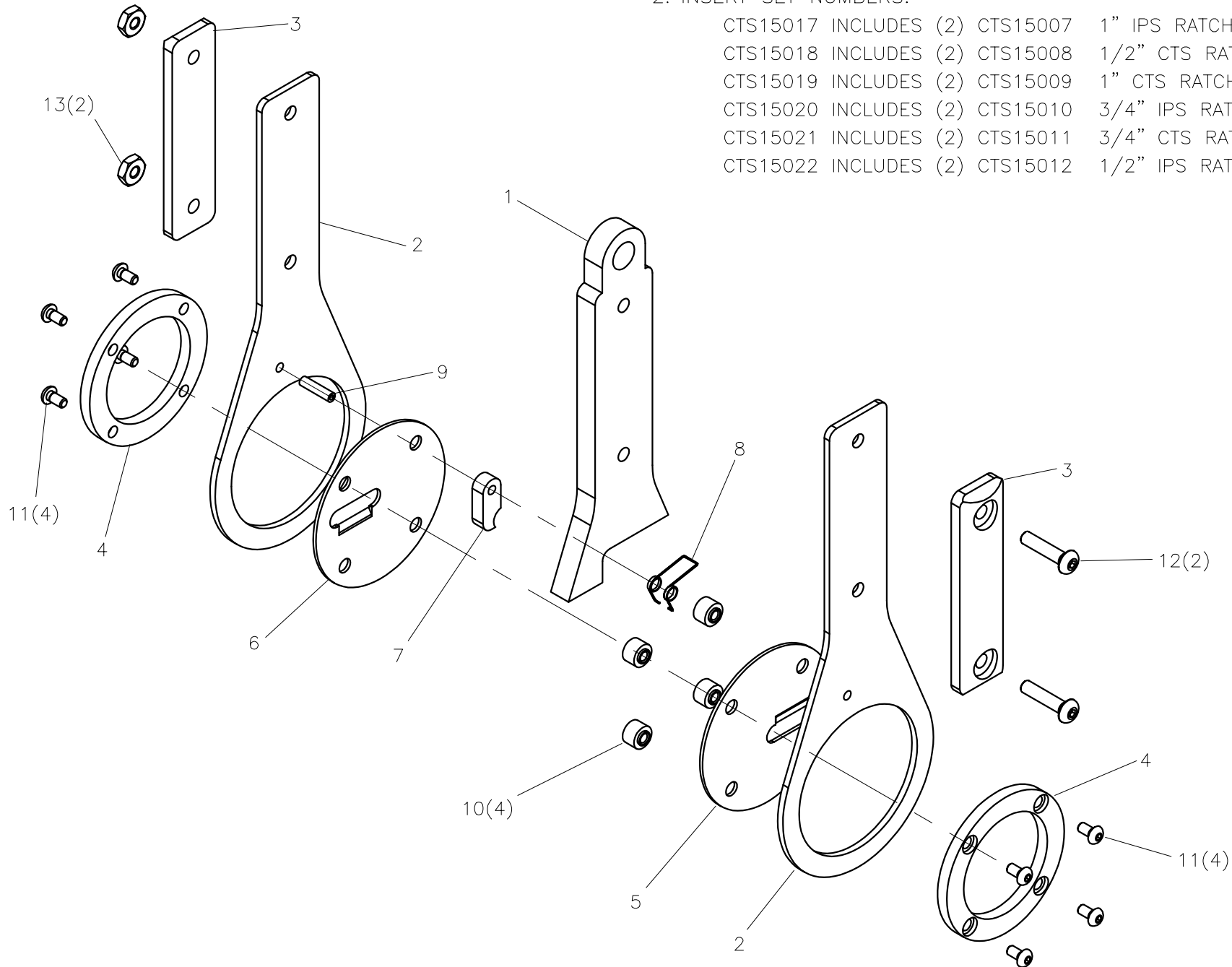
Mini-Mc RATCHET FACER ASSEMBLY

NOTE: THIS DRAWING AND THE INFORMATION CONTAINED THEREIN IS THE CONFIDENTIAL AND PROPRIETARY PROPERTY OF McElroy Manufacturing, Inc. THE DRAWING IS NOT TO BE REPRODUCED IN ANY MANNER, SUBMITTED OUTSIDE PARTIES FOR EXAMINATION, OR USED DIRECTLY OR INDIRECTLY FOR THE PURPOSES OTHER THAN THOSE FOR WHICH IT WAS FURNISHED WITHOUT WRITTEN PERMISSION OF McElroy Manufacturing, Inc.

NOTES:

1. INSTALL SHARP EDGE OF CUTTER HOLE NEXT TO HUB AS SHOWN.
2. INSERT SET NUMBERS:

CTS15017 INCLUDES (2)	CTS15007	1" IPS RATCHET FACER INSERT.
CTS15018 INCLUDES (2)	CTS15008	1/2" CTS RATCHET FACER INSERT.
CTS15019 INCLUDES (2)	CTS15009	1" CTS RATCHET FACER INSERT.
CTS15020 INCLUDES (2)	CTS15010	3/4" IPS RATCHET FACER INSERT.
CTS15021 INCLUDES (2)	CTS15011	3/4" CTS RATCHET FACER INSERT.
CTS15022 INCLUDES (2)	CTS15012	1/2" IPS RATCHET FACER INSERT.



**Mini-Mc RATCHET FACER ASSEMBLY**Parts List

ITEM	PART NO.	QTY.	DESCRIPTION
	<b>CTS15014</b>		<b>ASSEMBLY</b>
1	CTS15002	1	RATCHET FACER HANDLE SPACER
2	CTS15006	2	RATCHET FACER FACING BLOCK HOLDER
3	CTS15003	2	RATCHET FACER HANDLE
4	CTS15001	2	RATCHET FACER HUB
5	CTS06801	1	FACER CUTTER DISC
6	CTS06802	1	FACER CUTTER DISC
7	CTS15005	1	RATCHET FACER PAWL
8	CTS15013	1	RATCHET FACER TORSION SPRING
9	MCG00003	1	1/8DIAX1/2LG ROLL PIN
10	CTS15004	4	RATCHET FACER SPACER
11	MAN00034	8	#5-40NC X1/4" LG. BHCS SS
12	MAN00035	2	#8-32NCX3/4LG BHSCS SS
13	MBA00003	2	#8-32NC HEX NUT

## DRAWING REVISION HISTORY LISTING

**PART NO:** CTS15014

**DESCRIPTION:** Mini-Mc RATCHET FACER ASSEMBLY

<u>APPR.</u>	<u>REV</u>	<u>DATE</u>	<u>BY</u>	<u>DESCRIPTION OF REVISION</u>
TLW	A	9/27/99	MLM	MOVED FACER INSERTS FROM BEING PART OF THE DWG. TO THE NOTES AS SEPARATELY PURCHASED PARTS. ITEM 17 CHANGED TO ITEM 11, ITEM 18 CHANGED TO 12, ITEM 19 CHANGED TO ITEM 13.
TLW	--	11/10/99	RLE	CORRECTED SET NUMBERS ON PARTS LIST. INCORRECT NUMBERS COPIED WHEN REDRAWN.
SWB	B	10/05/05	BWW	CREATED EXPLODED ISOMETRIC VIEW AND MOVED NOTES TO DRAWING FACE FOR CLARITY.