



McElroy Manufacturing, Inc.  
The leader by design.  
Tulsa, Oklahoma U.S.A.

DRAWN: ALK

CHECK: MLM

APPRV'D: SWB

DATE: 01/07/02

SHT No: 1

REV No: B

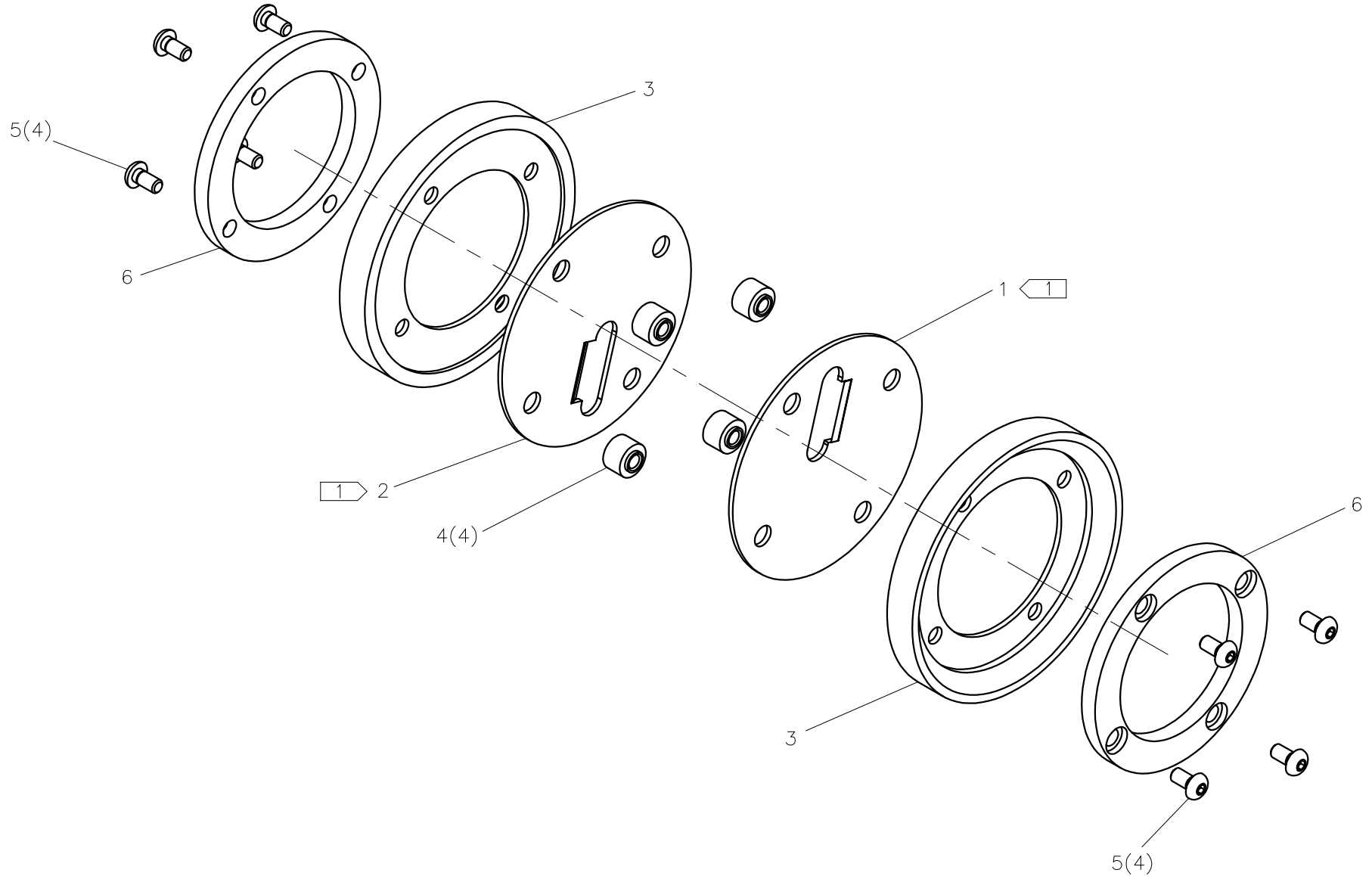
PART No: CTS01701

Mini-Mc FACER ASSEMBLY

NOTE: THIS DRAWING AND THE INFORMATION CONTAINED THEREIN IS THE CONFIDENTIAL AND PROPRIETARY PROPERTY OF McElroy Manufacturing, Inc. THE DRAWING IS NOT TO BE REPRODUCED IN ANY MANNER, SUBMITTED OUTSIDE PARTIES FOR EXAMINATION, OR USED DIRECTLY OR INDIRECTLY FOR THE PURPOSES OTHER THAN THOSE FOR WHICH IT WAS FURNISHED WITHOUT WRITTEN PERMISSION OF McElroy Manufacturing, Inc.

NOTES:

1. INSTALL SHARP EDGE OF CUTTER HOLE NEXT TO HUB.
2. ITEMS SHOWN IN PARENTHESIS REFLECT QUANTITIES IN A LOCAL GROUP AND MAY NOT INDICATE TOTAL ASSEMBLY QUANTITIES.



**Mini-Mc FACER ASSEMBLY**PARTS LIST

ITEM	PART NO.	QTY	DESCRIPTION
	<b>CTS01701</b>		<b>ASSEMBLY</b>
1	CTS06801	1	CUTTER DISC
2	CTS06802	1	CUTTER DISC
3	CTS01801	2	FACER HUB
4	CTS15004	4	RATCHET FACER SPACER
5	MAN00034	8	#5-40NC x 1/4 LG BHSCS SS
6	CTS15001	2	RATCHET FACER HUB

## DRAWING REVISION HISTORY LISTING

**PART NO:** CTS01701  
**DESCRIPTION:** Mini-Mc FACER ASSEMBLY

<u>APPR.</u>	<u>REV</u>	<u>DATE</u>	<u>BY</u>	<u>DESCRIPTION OF REVISION</u>
LAA	--	02/17/02	RLE	REVISED ITEM #5 MAN00034 TO MAE00119.
LAA	--	4/15/02	ALK	REVISED ITEM #5 FROM MAE00119 TO MAN00034 TO ENSURE SCREWS DO NOT MEET.
LAA	A	3/28/03	ALK	REVISED TO REMOVE ITEM #6 CTS01901. CHIP REMOVER NOT NECESSARY.
SWB	B	10/05/05	BWW	CREATED EXPLODED ISOMETRIC VIEW, MOVED NOTE 1 TO DRAWING FACE AND ADDED NOTE 2 FOR CLARITY.