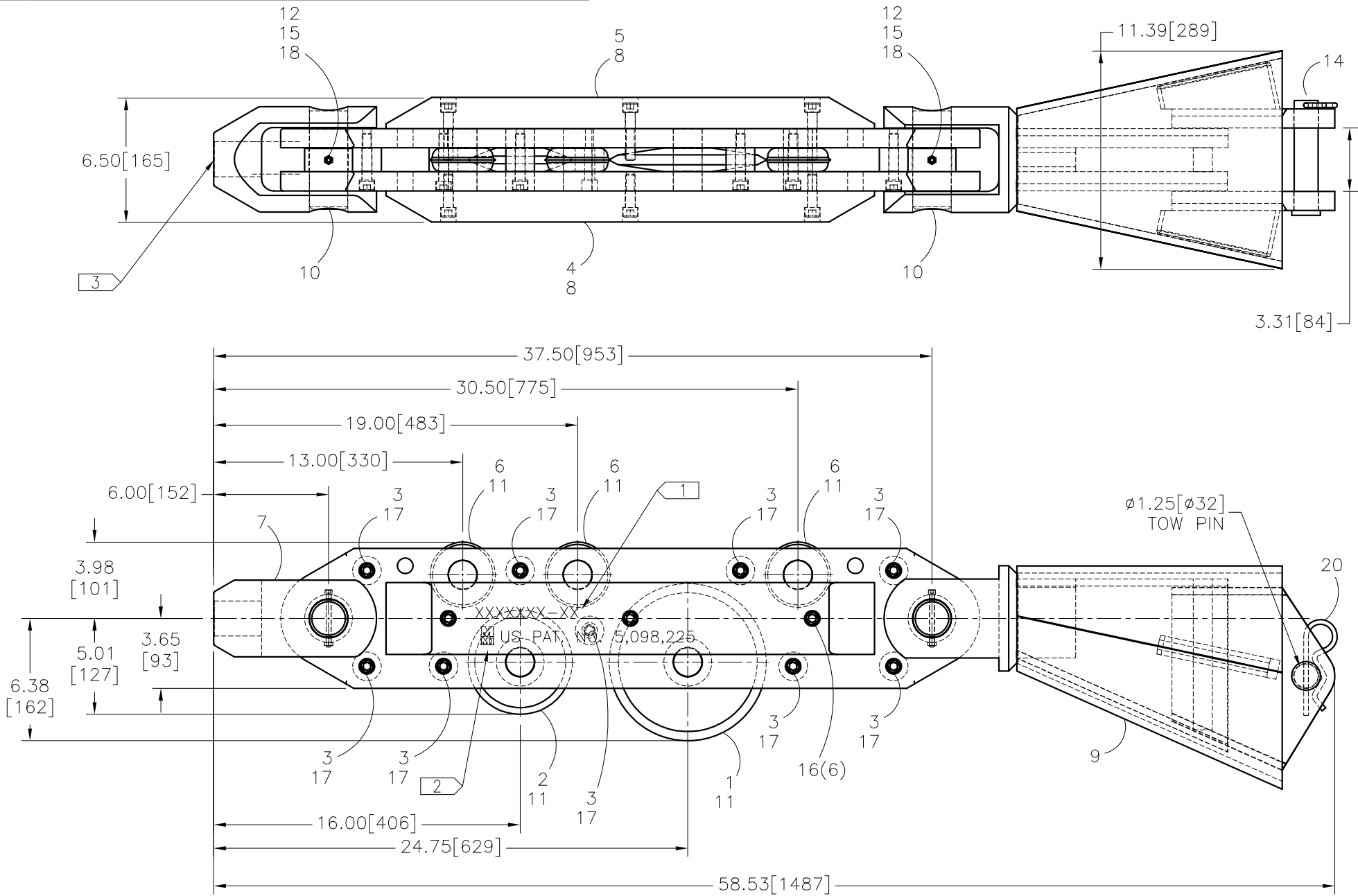




McElroy Manufacturing, Inc.
 The leader by design.
 Tulsa, Oklahoma U.S.A.

DRAWN: MLM	CHECK: BWP	APPRV'D: LJJ	DATE: 11/17/99	DWG No: B8-1000	SHT No: 1	REV No: B	PART No: B8-1001
8" PIPE SPLITTER ASSEMBLY							CAD No: B8_1001

NOTE: THIS DRAWING AND THE INFORMATION CONTAINED THEREIN IS THE CONFIDENTIAL AND PROPRIETARY PROPERTY OF McElroy Manufacturing, Inc. THE DRAWING IS NOT TO BE REPRODUCED IN ANY MANNER, SUBMITTED OUTSIDE PARTIES FOR EXAMINATION, OR USED DIRECTLY OR INDIRECTLY FOR THE PURPOSES OTHER THAN THOSE FOR WHICH IT WAS FURNISHED WITHOUT WRITTEN PERMISSION OF McElroy Manufacturing, Inc.



8" PIPE SPLITTER ASSEMBLYParts List

ITEM	PART NO.	QTY.	DESCRIPTION
	B8-1001		ASSEMBLY
1	B6-5101	1	8-1/4DIA CUTTER WHEEL
2	B6-5102	1	5-1/2DIA CUTTER WHEEL
3	B6-5201	9	SPLITTER BODY SPACER
4	B8-1101	1	C'BORED SPLITTER BODY
5	B8-1102	1	TAPPED SPLITTER BODY
6	B6-5401	3	GUIDE ROLLER
7	B6-5501	1	NOSE CONE
8	B8-1201	2	SPLITTER BODY SIDE PLATE
9	B8-1301	1	EXPANDER WELDMENT
10	B6-5801	2	CLEVIS PIN
11	B6-5803	5	CUTTER WHEEL PIN
12	B6-5901	2	CLEVIS PIN COLLAR
13			
14	B8-1501	1	TOWING CLEVIS PIN
15	MAC00062	2	1/4-20NCX2-3/4LG SHCS
16	MAC00142	6	1/2-13NCX1-3/4LG SHCS
17	MAC00145	9	1/2-13NCX2-1/2LG SHCS
18	MBC00048	2	1/4-20NC FINISH HEX NYL LCK NUT
19			
20	MCH00016	1	1-1/8X5LG HAIR PIN
21	B12-1501	1	PIPE SPLITTER LIFTING SLING

NOTES:

1. STAMP SERIAL NUMBER ON FLAT AS SHOWN.
MMI JOB NO. XXXXXXXX-XX 01, 02, ECT. (TYP. N.S. & F.S.)
2. STAMP MMI LOGO & U.S. PAT. NUMBER ON FLAT AS SHOWN. (TYP. N.S. & F.S.)
3. NOSE CONE THREADS 2"-6 ACME-2G.
4. DIMENSIONS IN [] ARE IN MILLIMETERS. ALL OTHER DIMENSIONS ARE IN INCHES.
5. ITEM #21 NOT SHOWN.

DRAWING REVISION HISTORY LISTING

PART NO: B8-1001
DESCRIPTION: 8" PIPE SPLITTER ASSEMBLY

<u>APPR.</u>	<u>REV</u>	<u>DATE</u>	<u>BY</u>	<u>DESCRIPTION OF REVISION</u>
SWB	A	08/14/00	TLW	REMOVED ITEM #13 B8-1401 EXPANDER CONE FROM PARTS LIST, IT IS NOW PART OF B8-1301. REVISED DESCRIPTION OF ITEM #9 B8-1301 FROM EXPANDER CLEVIS WELDMENT TO EXPANDER WELDMENT. THE OVERALL DIMENSION CHANGED FROM 55.25[1403] TO 58.53[1487] AND THE CONE WIDTH FROM 11.35[288] TO 11.39[289].THESE REVISIONS ARE DUE TO CHANGES MADE TO THE EXPANDER TO WORK BOTH WITH THE 6" AND 8" PIPE SPLITTER.
TLW	-	11/20/00	BWW	ADDED ITEM #21 B12-1501 LIFTING SLING AND NOTE 5 ITEM NOT SHOWN.
SWB	B	6/15/01	MLM	REMOVED ITEM #19-MCG00031 ROLL PIN. NOT REQUIRED DUE TO REVISION TO TOW PIN TO A PURCHASE PART.