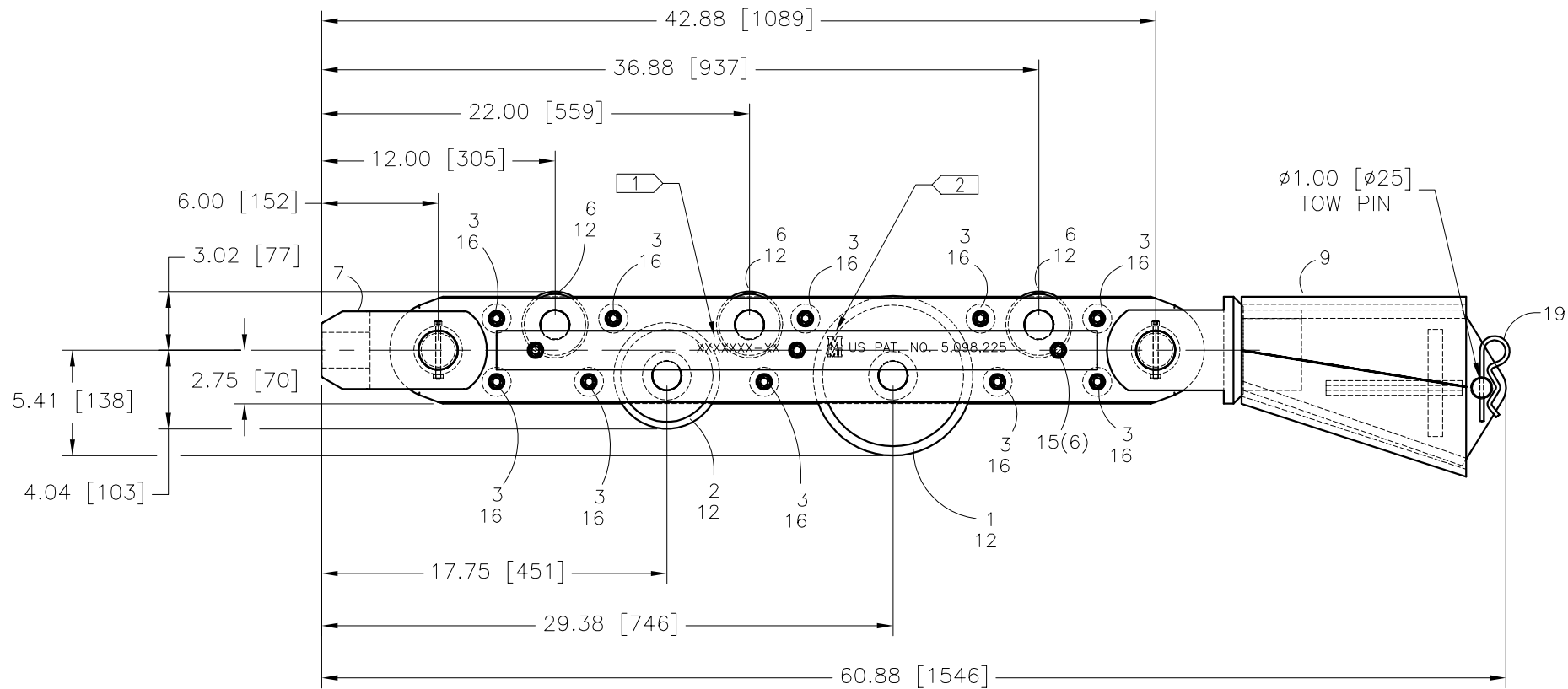
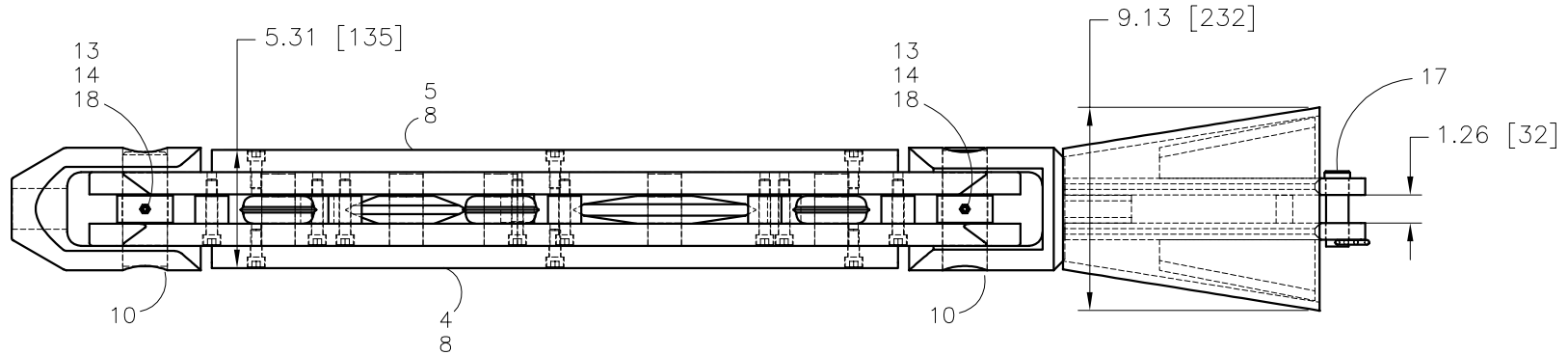




McElroy Manufacturing, Inc.
 The leader by design.
 Tulsa, Oklahoma U.S.A.

DRAWN: TLW	CHECK: BWP	APPRV'D: LJG	DATE: 10/12/99	DWG No: B6-6000	SHT No: 1	REV No: B	PART No: B6-6001
6" PIPE SPLITTER ASSEMBLY							CAD No: B6_6001

NOTE: THIS DRAWING AND THE INFORMATION CONTAINED THEREIN IS THE CONFIDENTIAL AND PROPRIETARY PROPERTY OF McElroy Manufacturing, Inc. THE DRAWING IS NOT TO BE REPRODUCED IN ANY MANNER, SUBMITTED OUTSIDE PARTIES FOR EXAMINATION, OR USED DIRECTLY OR INDIRECTLY FOR THE PURPOSES OTHER THAN THOSE FOR WHICH IT WAS FURNISHED WITHOUT WRITTEN PERMISSION OF McElroy Manufacturing, Inc.



6" PIPE SPLITTER ASSEMBLYParts List

ITEM	PART NO.	QTY.	DESCRIPTION
	B6-6001		ASSEMBLY
1	B6-5101	1	8-1/4DIA CUTTER WHEEL
2	B6-5102	1	5-1/2DIA CUTTER WHEEL
3	B6-5201	10	SPLITTER BODY SPACER
4	B6-6101	1	C'BORED SPLITTER BODY
5	B6-6102	1	TAPPED SPLITTER BODY
6	B6-5401	3	GUIDE ROLLER
7	B6-5501	1	NOSE CONE
8	B6-6201	2	SPLITTER BODY SIDE PLATE
9	B6-6301	1	EXPANDER WELDMENT
10	B6-5801	2	CLEVIS PIN
11			
12	B6-5803	5	CUTTER WHEEL PIN
13	B6-5901	2	CLEVIS PIN COLLAR
14	MAC00062	2	1/4-20NCX2-3/4LG SHCS
15	MAC00140	6	1/2-13NCX1-1/4LG SHCS
16	MAC00145	10	1/2-13NCX2-1/2LG SHCS
17	MCF00022	1	1DIA X 2-51/64 GRIP CLEVIS PIN PL
18	MBC00048	2	1/4-20NC FINISH HEX NYL LCK NUT
19	MCH00026	1	1"DIA X 3-9/16LG HAIR PIN

NOTES:

1. STAMP SERIAL NUMBER ON FLAT AS SHOWN.
MMI JOB NO. XXXXXXXX-XX 01, 02, ECT.
2. STAMP MMI LOGO & U.S. PAT. NUMBER ON FLAT AS SHOWN. (TYP. N.S. & F.S.)

DRAWING REVISION HISTORY LISTING

PART NO: B6_6001
DESCRIPTION: 6" PIPE SPLITTER ASSEMBLY

<u>APPR.</u>	<u>REV</u>	<u>DATE</u>	<u>BY</u>	<u>DESCRIPTION OF REVISION</u>
TLW	A	6/1/00	MLM	REVISED ITEM-19 FROM MCE00017 DETENT PIN TO A MCH00026 HAIR PIN.
SWB	B	4/16/02	RLE	ADDED DIMENSIONS