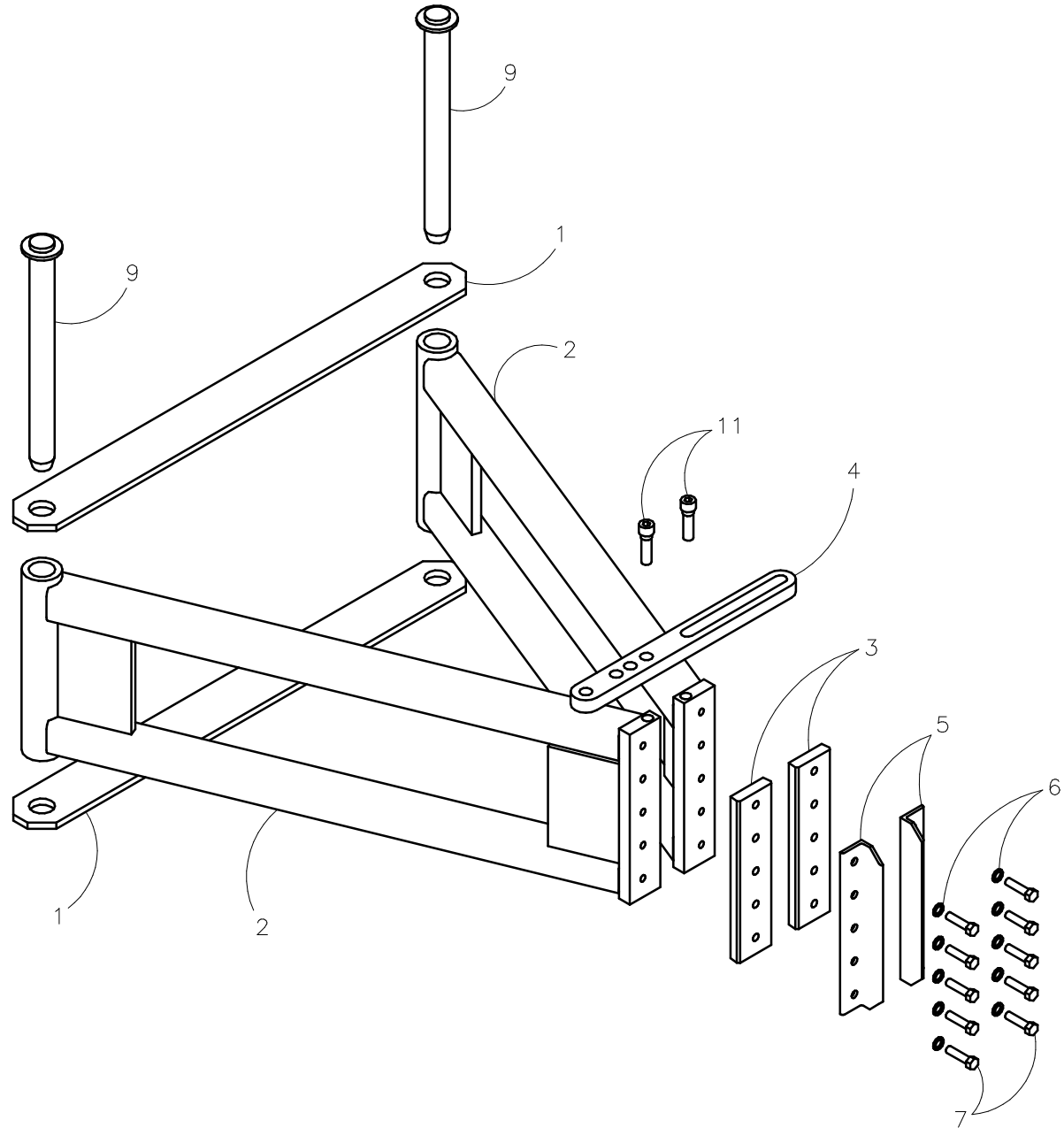




McElroy Manufacturing, Inc.  
The leader by design.  
© Tulsa, Oklahoma U.S.A.

DRAWN: TLW	CHECK: DWP	APPRV'D: B	DATE: 05-13-96	DWG No: B4-4300	SHT No: 1	REV No: A	PART No: B4-4301
SWING ARM ASSEMBLY							CAD No: B4-4301

NOTE: THIS DRAWING AND THE INFORMATION CONTAINED THEREIN IS THE CONFIDENTIAL AND PROPRIETARY PROPERTY OF McElroy Manufacturing, Inc. THE DRAWING IS NOT TO BE REPRODUCED IN ANY MANNER, SUBMITTED OUTSIDE PARTIES FOR EXAMINATION, OR USED DIRECTLY OR INDIRECTLY FOR THE PURPOSES OTHER THAN THOSE FOR WHICH IT WAS FURNISHED WITHOUT WRITTEN PERMISSION OF McElroy Manufacturing, Inc.



**SWING ARM ASSEMBLY**Parts List

ITEM	PART NO.	QTY.	DESCRIPTION
	<b>B4-4301</b>	<b>1</b>	<b>ASSEMBLY</b>
1	B4-3202	2	CROSS LINK
2	B4-6201	2	SWING ARM WELDMENT
3	B4-6301	2	SWING ARM BLADE
4	B4-6501	1	SWING ARM STOP
5	B4-6401	2	BLADE RETAINER
6	MBE00007	10	3/8" LOCKWASHER
7	MAA00066	10	3/8"-16NC X 1-1/2"LG HHCS GR2 STL PL
8	MCK00030	2	HAIR PIN
9	MCK00031	2	1-1/4"DIA. X 15"LG. HITCH PIN
10	MJG00003	2	ELASTIC SHOCK CORD
11	MAF00062	2	5/8 X 1 1/4 SHOULDER SCREW

**NOTES:**

1. Item #8 And #10 Not Shown On Drawing.

## DRAWING REVISION HISTORY LISTING

**PART NO:** B4-4301

**DESCRIPTION:** SWING ARM ASSEMBLY

<u>APPR.</u>	<u>REV</u>	<u>DATE</u>	<u>BY</u>	<u>DESCRIPTION OF REVISION</u>
B	A	5/15/96	TLW	CHANGED B4-3301 TO B4-6201 WELDMENT, B4-3401 TO B4-6301 BLADE, B4-3501 TO B4-6501 STOP, QTY. OF MAA00066 FROM (4) TO (10). ADDED BLADE RETAINER B4-6401, SHOULDER SCREW MAF00062 & LK WASHER MBE0007. REMOVED MBF00007 FLAT WASHER.