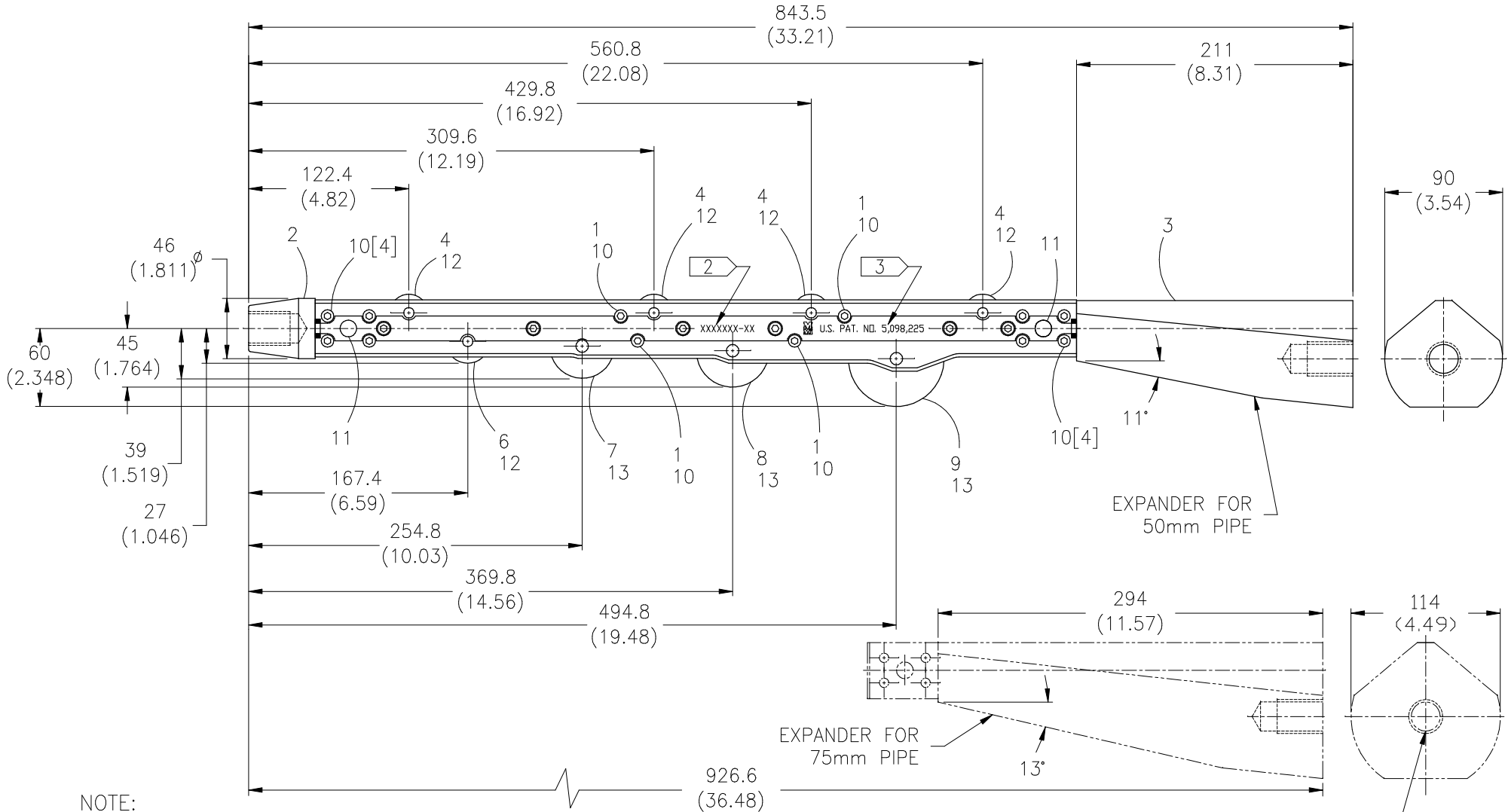




**McElroy Manufacturing, Inc.**  
 The leader by design.  
 Tulsa, Oklahoma U.S.A.

DRAWN: TLW	CHECK: doug	APPR'VD: B	DATE: 4/23/96	DWG No: B2-4800	SHT No: 1	REV No: A	PART No: B2-4801
2" JIS Bullet ASSEMBLY (SHIZUOKA GAS)							CAD FILE No: B2-4801

APPROVED AS DRAWN \_\_\_\_\_ DATE \_\_\_\_\_  
 REVISED AS NOTED \_\_\_\_\_ DATE \_\_\_\_\_



**NOTE:**

1. DIMENSIONS IN ( ) ARE IN INCHES. ALL OTHER DIMENSIONS ARE IN MILLIMETERS.

THREAD 26mm X P5 SQUARE THREADS. TYP. (3) PLCS.

NOTE: This drawing and the information contained therein is the confidential and proprietary property of McElroy Manufacturing, Inc. The drawing is not to be reproduced in any manner, submitted to outside parties for examination, or used directly or indirectly for purposes other than those for which it was furnished without written permission of McElroy Manufacturing, Inc.

**2" JIS Bullet™ ASSEMBLY (SHIZUOKA GAS)**Parts List

ITEM	PART NO.	QTY.	DESCRIPTION
	<b>B2-4801</b>	<b>1</b>	<b>ASSEMBLY</b>
1	B2-3301	4	SPLITTER BODY SPACER (MODULAR)
2	B2-5101	1	JIS NOSE CONE
3	B2-5301	1	JIS 50MM EXPANDER
4	B2-5801	4	JIS GUIDE ROLLER (T.G.)
5	B2-7301	1	2" JIS SPLITTER BODY SET (T.G.)
6	B2-901	1	1.312 DIA. CUTTER WHEEL
7	B2-902	1	1.937 DIA. CUTTER WHEEL
8	B2-903	1	2.187 DIA. CUTTER WHEEL
9	B2-904	1	2.875 DIA. CUTTER WHEEL
10	B2-8001	12	SPLITTER BODY SCREWS
11	MCI00019	2	1/2" DIA X 1-3/4"LG DOWEL PIN
12	MCI00023	5	5/16" DIA X 1"LG DOWEL PIN
13	MCI00024	3	3/8" DIA X 1"LG DOWEL PIN

**NOTES:**

2. STAMP SERIAL NUMBER ON FLAT AS SHOWN.  
MMI JOB NO. XXXXXXXX-XX 01, 02, ECT.  
(TYP. N.S. & F.S.)
3. STAMP MMI LOGO & U.S. PAT. NUMBER ON FLAT AS SHOWN. (TYP. N.S. & F.S.)
4. 75mm EXPANDER SHOWN FOR INSTALLATION INFORMATION.

## DRAWING REVISION HISTORY LISTING

**PART NO:** B2-4801

**DESCRIPTION:** 2" JIS Bullet™ ASSEMBLY (SHIZUOKA GAS)

<u>APPR.</u>	<u>REV</u>	<u>DATE</u>	<u>BY</u>	<u>DESCRIPTION OF REVISION</u>
doug	A	9/25/96	TLW	ADDED ITEM NUMBERS TO ASSEMBLY DRAWING AND CREATED TYPED PARTS LIST.
doug	-	3/24/98	TLW	REVISED ITEM #10 (MAC00055) TO (B2-8001).