



McElroy Manufacturing, Inc.  
The leader by design.  
Tulsa, Oklahoma U.S.A.

DRAWN: RLE	CHECK: BWP	APPRV'D: SWB	DATE: 9/6/01	DWG No: 6319500	SHT No: 1A	REV No: J	PART No: 6319501
#2065 ROLLING CHASSIS ASSEMBLY							CAD No: 6319501

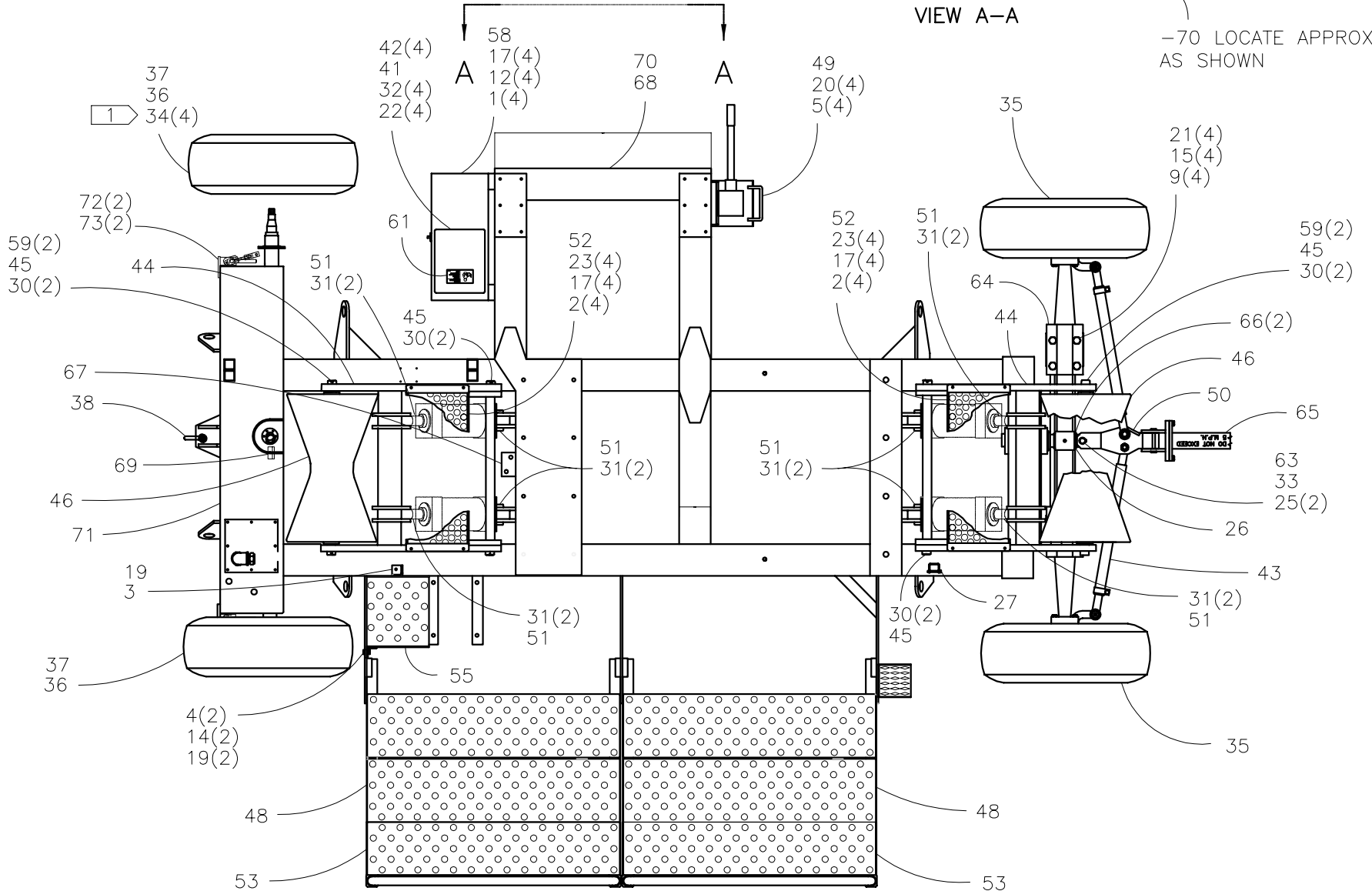
NOTE: THIS DRAWING AND THE INFORMATION CONTAINED THEREIN IS THE CONFIDENTIAL AND PROPRIETARY PROPERTY OF McElroy Manufacturing, Inc. THE DRAWING IS NOT TO BE REPRODUCED IN ANY MANNER, SUBMITTED OUTSIDE PARTIES FOR EXAMINATION, OR USED DIRECTLY OR INDIRECTLY FOR THE PURPOSES OTHER THAN THOSE FOR WHICH IT WAS FURNISHED WITHOUT WRITTEN PERMISSION OF McElroy Manufacturing, Inc.



-68

VIEW A-A

-70 LOCATE APPROX. AS SHOWN

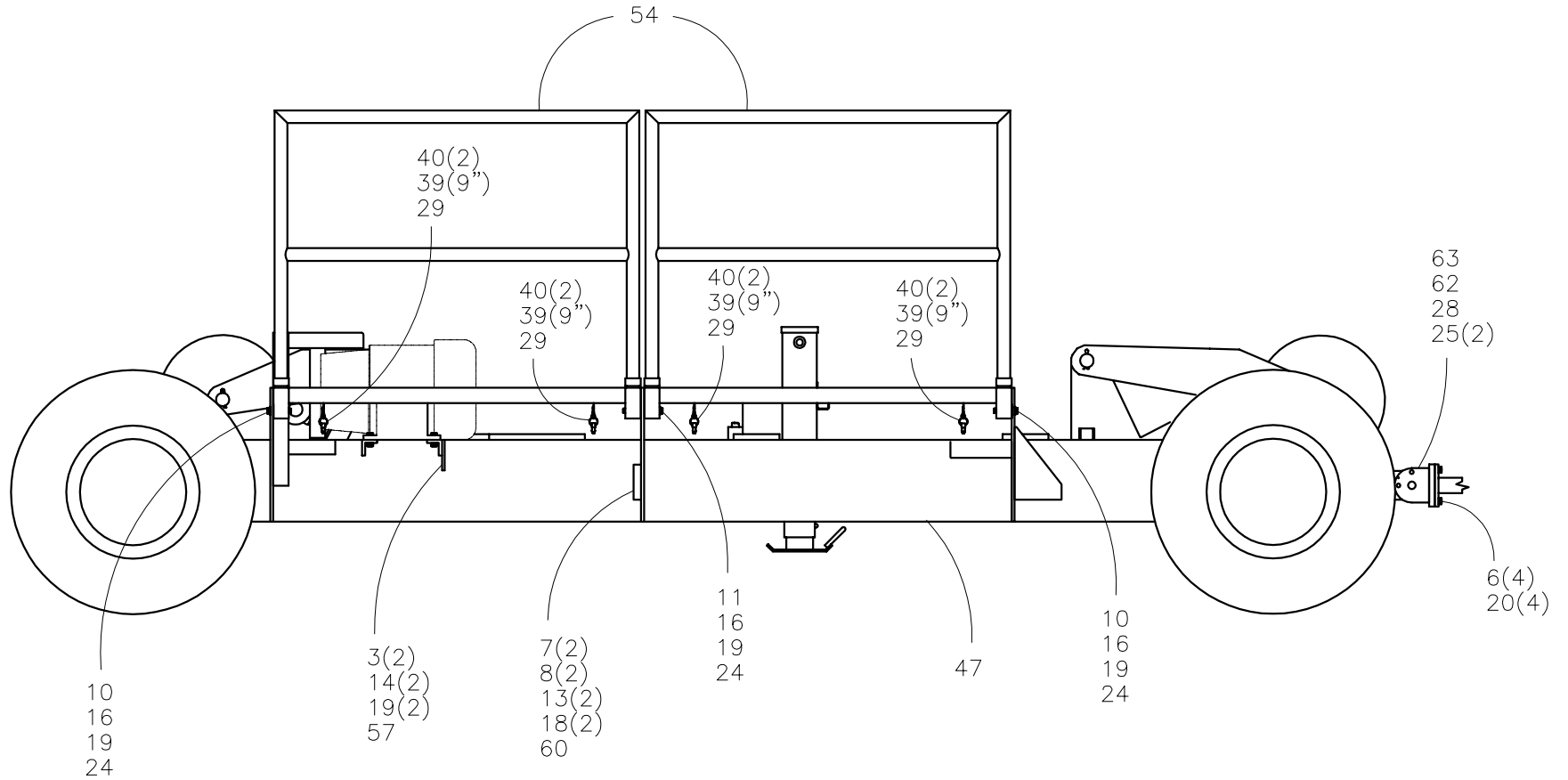




**McElroy Manufacturing, Inc.**  
 The leader by design.  
 Tulsa, Oklahoma U.S.A.

DRAWN: RLE	CHECK: BWP	APPRV'D: SWB	DATE: 9/6/01	DWG No: 6319500	SHT No: 1B	REV No: J	PART No: 6319501
#2065 ROLLING CHASSIS ASSEMBLY							CAD No: 6319501

NOTE: THIS DRAWING AND THE INFORMATION CONTAINED THEREIN IS THE CONFIDENTIAL AND PROPRIETARY PROPERTY OF McElroy Manufacturing, Inc. THE DRAWING IS NOT TO BE REPRODUCED IN ANY MANNER, SUBMITTED OUTSIDE PARTIES FOR EXAMINATION, OR USED DIRECTLY OR INDIRECTLY FOR THE PURPOSES OTHER THAN THOSE FOR WHICH IT WAS FURNISHED WITHOUT WRITTEN PERMISSION OF McElroy Manufacturing, Inc.



**#2065 ROLLING CHASSIS ASSEMBLY**Parts List

ITEM	PART NO.	QTY.	DESCRIPTION
	<b>6319501</b>		<b>ASSEMBLY</b>
1	MAB00002	4	1/4-20NC x 1/2 LG. HHCS
2	MAB00004	8	1/4-20 NC x 1" LG. HHCS
3	MAB00064	3	3/8-16 NC x 1" LG. HHCS
4	MAB00065	2	3/8-16 NC x 1-1/4 LG. HHCS
5	MAB00080	4	1/2-13 NC x 1" LG. HHCS
6	MAB00082	4	1/2-13 NC x 1-1/2 LG. HHCS
7	MAC00077	2	5/16-18NC x 1-1/2 LG SHCS
8	MAC00083	2	5/16-18NC x 3" LG. SHCS
9	MAC00200	8	7/8-9NC x 3 1/4 LG. SHCS
10	MAF00050	2	1/2 DIA. x 2-1/2 LG. SOCKET HEAD SHOULDER SCREW
11	MAF00058	1	1/2 DIA. x 4-1/2 LG. SOCKET HEAD SHOULDER SCREW
12	MBA00005	4	1/4-20NC FINISHED HEX NUT
13	MBA00006	2	5/16-18NC FINISHED HEX NUT
14	MBA00007	4	3/8-16 NC FINISHED HEX NUT
15	MBA00013	8	7/8-9NC FINISHED HEX NUT
16	MBC00007	3	3/8-16NC FINISHED HEX NYLON LOCK NUT
17	MBE00005	12	1/4" REGULAR SPLIT LOCK WASHER
18	MBE00006	2	5/16" REGULAR SPLIT LOCK WASHER
19	MBE00007	8	3/8" REGULAR SPLIT LOCK WASHER
20	MBE00009	8	1/2" REGULAR SPLIT LOCK WASHER
21	MBE00013	8	7/8" REGULAR SPLIT LOCK WASHER
22	MBF00004	4	#10 TYPE 'A' WIDE FLAT WASHER
23	MBF00005	8	1/4 TYPE 'A' WIDE FLAT WASHER
24	MBF00009	3	1/2" TYPE 'A' WIDE FLAT WASHER
25	MCB00006	4	EXTERNAL SNAP RING
26	MCB00018	1	EXTERNAL SNAP RING
27	MCE00002	1	1/4 x 2.00 GRIP DETENT PIN
28	MCE00014	1	1/2 x 4.10 GRIP DETENT PIN
29	MCE00022	4	5/16 x .75 GRIP DETENT PIN
30	MCH00006	8	1/4 x 2" LG. COTTER PIN
31	MCH00027	16	3/16 x 2" LG. COTTER PIN
32	MCK00003	4	3/16 x 3/8 GRIP BLIND RIVET
33	MDM00106	1	BUSHING
34	6314402	4	WHEEL & TIRE ASSEMBLY
35	MIB00008	2	HUB W/ BRG, SEAL, CAPS & LUG NUTS
36	MIB00009	2	HUB W/ BRG, SEAL, CAPS & LUG NUTS
37	MIE00001	1	RH & LH BRAKE ASSEMBLY SET
38	MJD00012	1	5/8, 5 TON SHACKLE
39	MJQ00025	3'	.045 DIA. COATED CABLE

**#2065 ROLLING CHASSIS ASSEMBLY**Parts List

ITEM	PART NO.	QTY.	DESCRIPTION
40	MJQ00026	8	FERRULE
41	MJQ00260	1	STD 8-1/2 x 11 LITERATURE COMPARTMENT
42	MLN00175	4	1/4 x 1/2 OD SEAL WASHER
43	6300501	1	FRONT AXLE MODIFICATION ASSEMBLY
44	6302701	2	PIPE LIFT
45	6303901	4	PIPE LIFT ROLLER PIVOT SHAFT
46	6304001	2	PIPE LIFT ROLLER
47	6304309	1	CHASSIS
48	6306401	2	WORK PLATFORM
49	6307001	1	OUTRIGGER
50	6307102	1	STEERING ADAPTER ARM
51	6307301	8	PIPE LIFT CYLINDER CLEVIS PIN
52	6308401	2	PIPE ROLLER LIFT ARM TREAD PLATE
53	6308501	2	WORK PLATFORM EXTENSION TREAD PLATE
54	6308801	2	GUARD RAIL
55	6309501	1	HYDRAULIC PUMP STEP GUARD
56			
57	6313101	1	BULKHEAD FITTING MOUNTING BRACKET
58	6314501	1	TOOL BOX MODIFICATION
59	6314801	4	PIPE ROLLER SHAFT SPACER
60	6317001	1	PUMP/FILTER PHENOLIC HOSE BRACKET
61	816342	1	SAFETY INSTRUCTION MANUAL BOX LABEL
62	4808101	1	FORWARD-REVERSE CYLINDER MTG BRACKET
63	4808401	2	HITCH PIN
64	4815307	1	FRONT AXLE SUPPORT ASSEMBLY
65	4823801	1	TOW BAR
66	4824602	2	FRONT AXLE SUPPORT THRUST WASHER
67	6301802	1	AFT PIPE LIFT BULKHEAD FTG BRACKET
68	8163122	1	MEGAMC McELROY LABEL
69	8163106	1	HYDRAULIC OIL SPECIFICATION LABEL
70	8163129	1	NO. 2065 LABEL
71	8163120	1	LARGE McELROY BRANDING LABEL
72	6309307	2	CONNECTOR LINK WELDMENT
73	6309308	2	CLEVIS

## NOTES:

1. WHEEL 6314401 AND TIRE MIA00010 CAN BE PURCHASED SEPARATELY.

## DRAWING REVISION HISTORY LISTING

**PART NO:** 6319501

**DESCRIPTION:** #2065 ROLLING CHASSIS ASSEMBLY

<u>APPR.</u>	<u>REV</u>	<u>DATE</u>	<u>BY</u>	<u>DESCRIPTION OF REVISION</u>
SWB	A	5/6/02	ALK	ADDED ITEM-67 6301802 AFT PIPE LIFT BULKHEAD FTG BRACKET. LEFT OFF AT CREATION OF ROLLING CHASSIS ASSEMBLY.
SWB	B	09/13/02	BWW	REVISED TO CHANGE QTY OF ITEM 37 MIE00001 FROM 2 TO 1 BECAUSE PART NUMBER CONTAINS BOTH LEFT AND RIGHT SIDE BRAKE COMPONENTS.
SWB	---	10/30/02	ALK	ADDED ADDITIONAL DESCRIPTION TO ITEMS 35 & 36 HUB TO INCLUDE BEARING, SEAL, DUST CAPS & LUG NUTS.
SWB	C	05/08/03	BWW	REVISED TO ADD NOTE 1 FOR PURCHASE OF WHEEL AND TIRE FOR ITEM 34 SEPARATELY. REMOVED PART NUMBERS FOR WHEEL AND TIRE FROM DESCRIPTION OF ITEM 34.
SWB	D	08/06/04	BWW	CORRECTED TO ADD ITEM 68 4824301 LABEL QTY 1 TO INDEXING CARRIAGE.
SWB	E	10/26/04	MLM	REVISED TO ADD ITEM-69 (HYDRAULIC OIL SPECIFICATION LABEL-8163106)
SWB	F	2/9/05	RLE	REVISED ITEM #68 4824301 TO 8163122, ADDED ITEM #70 8163129 QTY. (1) & ITEM #71 8163120 QTY. (1). ADDED VIEW A-A TO LOCATE LABEL FOR NEW BRANDING LABEL.
SWB	G	06/07/05	JAB	MOVED ITEMS #72 (6309307) & #73 (6309308) BRAKE COMPONENTS FROM 6309301 & 6309302 TO THIS ASSEMBLY FOR EASE OF ASSEMBLY.
SPA	H	09/27/05	JAB	REVISE TO REMOVE ITEM 56 (6309701), BECAUSE VIBRATION ISOLATION IS NO LONGER NECESSARY WITH THE CURRENT PUMP AND MOTOR.
SWB	J	10/12/06	FAW	REVISED ITEM 34 FROM MIA00014 TO 6314402 TO REFLECT NEW NUMBER CREATED FOR WHEEL & TIRE ASSEMBLY DRAWING.