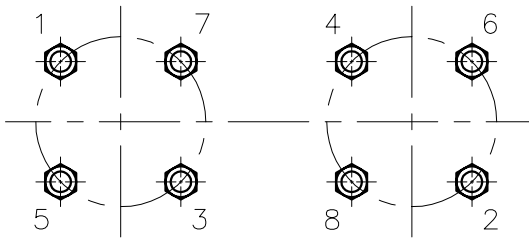




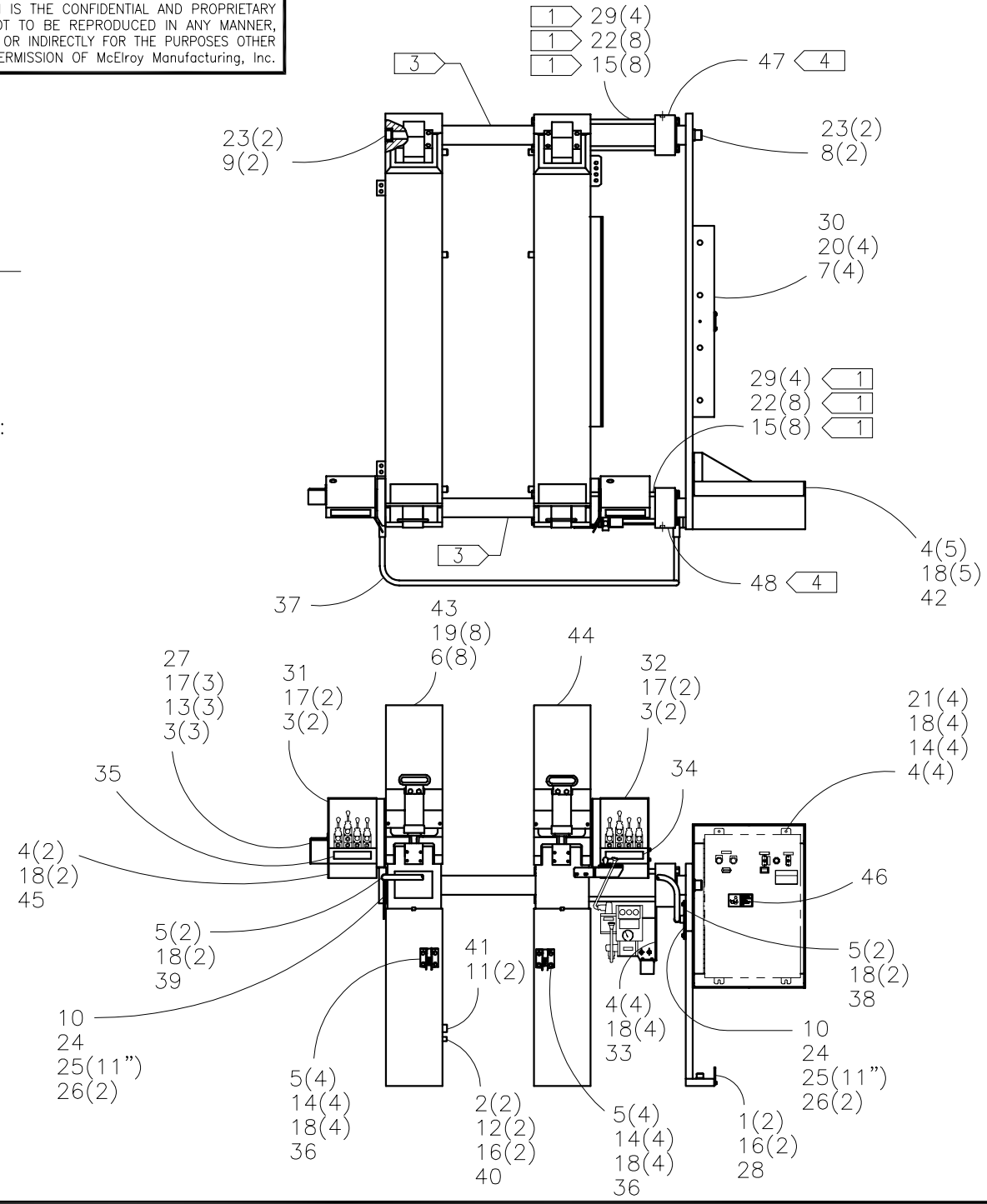
McElroy Manufacturing, Inc.
The leader by design.
Tulsa, Oklahoma U.S.A.

DRAWN: RLE	CHECK: BWP	APPRV'D: SWB	DATE: 9/7/01	DWG No: 6319300	SHT No: 1	REV No: B	PART No: 6319301
#2065 JAW SET ASSEMBLY							CAD No: 6319301

NOTE: THIS DRAWING AND THE INFORMATION CONTAINED THEREIN IS THE CONFIDENTIAL AND PROPRIETARY PROPERTY OF McElroy Manufacturing, Inc. THE DRAWING IS NOT TO BE REPRODUCED IN ANY MANNER, SUBMITTED OUTSIDE PARTIES FOR EXAMINATION, OR USED DIRECTLY OR INDIRECTLY FOR THE PURPOSES OTHER THAN THOSE FOR WHICH IT WAS FURNISHED WITHOUT WRITTEN PERMISSION OF McElroy Manufacturing, Inc.



TIE ROD TORQUE PROCEDURE:
TIGHTEN TIE ROD NUTS IN
SEQUENCE 8-10 Ft. Lbs.
REPEAT 185-200 Ft. Lbs.



#2065 JAW SET ASSEMBLYPARTS LIST

ITEM	PART NO.	QTY	DESCRIPTION
	6319301		ASSEMBLY
1	MAB00003	2	1/4-20NC x 3/4 LG. HHCS GR. 5 PL
2	MAB00007	2	1/4-20NC x 1-3/4 LG. HHCS GR. 5
3	MAB00032	7	5/16-18NC x 3/4 LG. HHCS GR. 5
4	MAB00064	15	3/8-16NC x 1 LG. HHCS GR. 5
5	MAB00066	8	3/8-16NC x 1-1/2 LG. HHCS GR. 5
6	MAB00083	8	5/8-11NC x 2-1/2 LG. HHCS GR. 8
7	MAB00085	4	1-8 NC x 3" LG. HHCS GR. 8
8	MAC00225	2	1-1/2-6 NC x 3" LG. SHCS
9	MAC00238	2	1-1/2-6 NC x 12 LG. SHCS
10	MAH00036	2	#6-32NC x 3/8 LG. HWH TC SCR
11	MAH00044	2	1/4-20 NC x 1-1/4 LG. SHCS 18-8SS
12	MBA00005	2	1/4-20NC FINISHED HEX NUT
13	MBA00006	3	5/16-18NC FINISHED HEX NUT
14	MBA00007	8	3/8-16NC FINISHED HEX NUT
15	MBA00055	16	1-14 UNS FINISHED HEX NUT
16	MBE00005	4	1/4" REG. SPLIT LOCK WASHER
17	MBE00006	7	5/16" REG. SPLIT LOCK WASHER
18	MBE00007	23	3/8" REG. SPLIT LOCK WASHER
19	MBE00011	8	5/8" REG. SPLIT LOCK WASHER
20	MBE00014	4	1" REG. SPLIT LOCK WASHER
21	MBF00007	4	3/8" FLAT WASHER
22	MBG00011	16	1" FLAT WASHER
23	MBG00039	4	FLAT WASHER
24	MCE00001	2	1/4" DIA. X 1.60 GRIP DETENT PIN
25	MJQ00025	1.83FT	COATED CABLE
26	MJQ00026	4	FERRULE
27	6301602	1	PRESSURE GAGE PROTECTIVE SHIELD
28	6301801	1	FWD PIPE LIFT BULKHEAD FTG. MTG. BRACKET
29	6303801	8	TIE ROD
30	6306001	1	GUIDE ROD SUPPORT PLATE
31	6306805	1	FIXED JAW VALVE STACK COVER
32	6306806	1	MOVEABLE JAW VALVE STACK COVER
33	6306902	1	MANIFOLD MOUNTING BRACKET
34	6308302	1	FCR, HTR IN/OUT, MOVABEL JAWS OPEN/CLOSE, CLAMP/UNCLAMP LABEL

#2065 JAW SET ASSEMBLYPARTS LIST

ITEM	PART NO.	QTY	DESCRIPTION
35	6308303	1	FIXED JAWS OPEN/CLOSE/CLAMP/UNCLAMP, FORWARD/AFT LIFT LABEL
36	6309801	2	OPERATOR PLATFORM LATCH ASSEMBLY
37	6310101	1	SAFETY RAIL
38	6310201	1	SAFETY RAIL MOUNTING BRACKET
39	6310202	1	SAFETY RAIL MOUNTING BRACKET
40	6310401	1	SAFETY GUARD STORAGE BRACKET
41	6310501	1	SAFETY GUARD HOLD DOWN BLOCK
42	6311001	1	ELECT. CONTROL BOX MOUNTING BRACKET
43	6319001	1	FIXED JAW ASSEMBLY
44	6319101	1	MOVABLE JAW ASSEMBLY
45	2424301	1	INDEXING VALVE GUARD
46	816342	1	SAFETY INSTRUCTION MANUAL BOX LABEL
47	6304601	1	PIVOT SIDE CYLINDER CAP
47	6304602	1	CLAMP SIDE CYLINDER CAP

NOTES:

1. SEE TIE ROD TORQUE PROCEDURE.
- 2.
3. INSTALL GUIDE ROD END WITH "FWD" IDENTIFICATION IN GUIDE ROD SUPPORT PLATE OR END WITH LONGEST DIMENSION FROM SNAP RING GROOVE TO END OF GUIDE ROD.
4. ORIENT WITH PORTS OUTBOARD.

DRAWING REVISION HISTORY LISTING

PART NO: 6319301

DESCRIPTION: #2065 JAW SET ASSEMBLY

<u>APPR.</u>	<u>REV</u>	<u>DATE</u>	<u>BY</u>	<u>DESCRIPTION OF REVISION</u>
SWB	A	3/8/04	ALK	ADD ADDITIONAL INFORMATION TO NOTE 3 TO ELIMINATE CONFUSION.
SPA	B	09/27/05	JAB	REVISED TO CHANGE QTY OF ITEMS 34 AND 35 (6308302 AND 6308303) FROM 2EA. TO 1EA. ALSO REMOVED NOTE 2. ALL CHANGES MADE TO MATCH AS BUILT CONDITION.