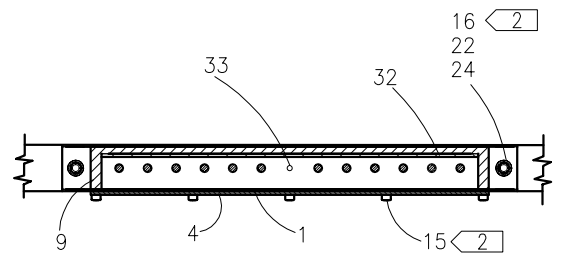




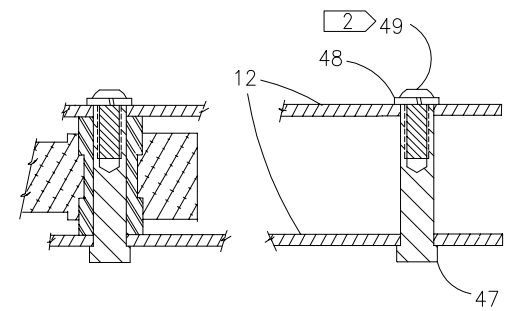
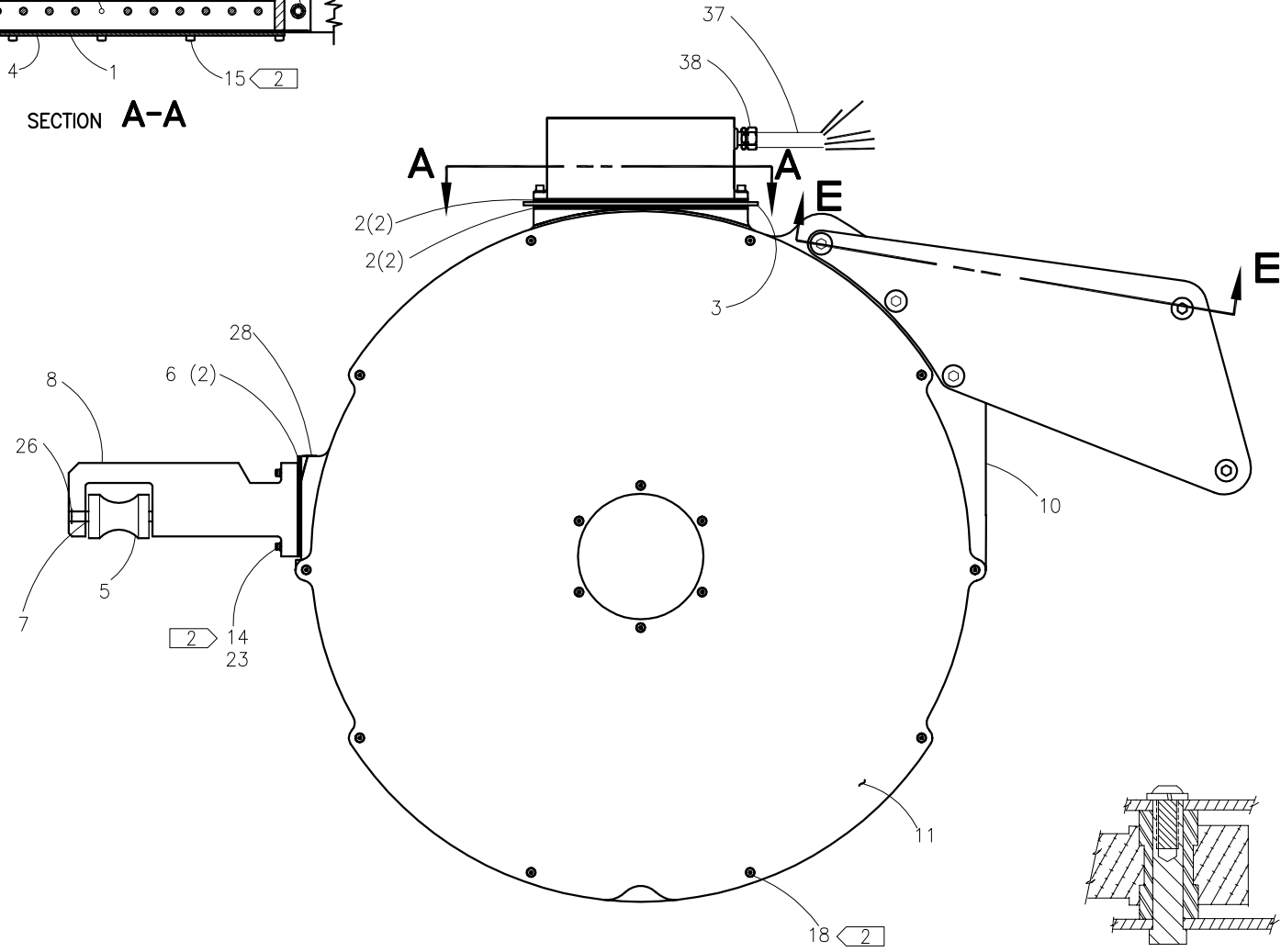
McElroy Manufacturing, Inc.
 The leader by design.
 Tulsa, Oklahoma U.S.A.

DRAWN: TLW	CHECK: BWP	APPRV'D: B	DATE: 7/5/95	DWG No: 6301100	SHT No: 1A	REV No: J	PART No: 6301101
48" BUTT PLATE HEATER ASSEMBLY							CAD No: 6301101

NOTE: THIS DRAWING AND THE INFORMATION CONTAINED THEREIN IS THE CONFIDENTIAL AND PROPRIETARY PROPERTY OF McElroy Manufacturing, Inc. THE DRAWING IS NOT TO BE REPRODUCED IN ANY MANNER, SUBMITTED OUTSIDE PARTIES FOR EXAMINATION, OR USED DIRECTLY OR INDIRECTLY FOR THE PURPOSES OTHER THAN THOSE FOR WHICH IT WAS FURNISHED WITHOUT WRITTEN PERMISSION OF McElroy Manufacturing, Inc.



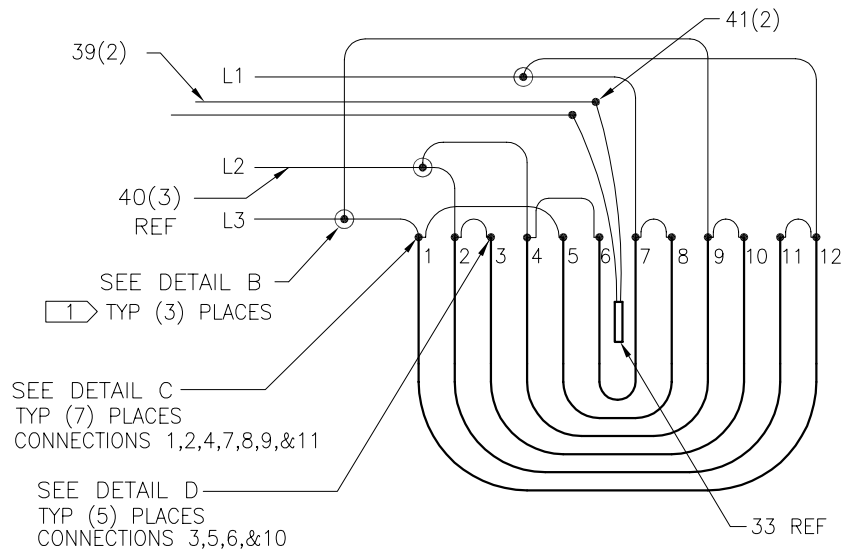
SECTION **A-A**



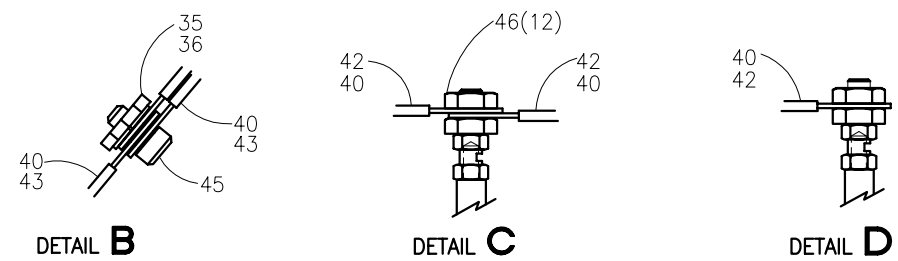
SECTION **E-E**



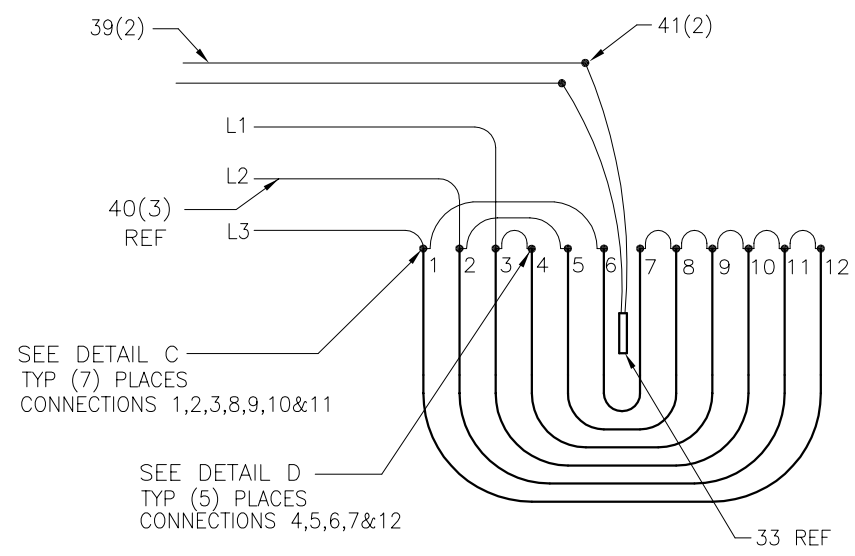
NOTE: THIS DRAWING AND THE INFORMATION CONTAINED THEREIN IS THE CONFIDENTIAL AND PROPRIETARY PROPERTY OF McElroy Manufacturing, Inc. THE DRAWING IS NOT TO BE REPRODUCED IN ANY MANNER, SUBMITTED OUTSIDE PARTIES FOR EXAMINATION, OR USED DIRECTLY OR INDIRECTLY FOR THE PURPOSES OTHER THAN THOSE FOR WHICH IT WAS FURNISHED WITHOUT WRITTEN PERMISSION OF McElroy Manufacturing, Inc.



HEATER SCHEMATIC
 220-240V, 50/60Hz, 3Ph
 35,000 WATT



DETAIL B **DETAIL C** **DETAIL D**



HEATER SCHEMATIC
 415V, 50Hz, 3Ph
 35,000 WATT

48" BUTT PLATE HEATER ASSEMBLYPARTS LIST

ITEM	PART NO.	QTY	DESCRIPTION
	6301101		Assembly
1	2410602	1	TERMINAL ENCLOSURE COVER GASKET
2	2410603	4	TERMINAL ENCLOSURE GASKET
3	3602005	1	HEAT SINK PLATE
4	3603103	1	HEATER TERMINAL ENCLOSURE COVER
5	4807501	1	ROLLER
6	4815802	2	HEATER GASKET
7	4816301	1	HEATER ROLLER HOUSING PIN
8	6305101	1	48" HEATER ROLLER HOUSING
9	6308601	1	65" HEATER TERMINAL ENCLOSURE
10	6311804	1	48" HEATER BODY
11	6311805	2	48" BUTT PLATE
12	6311809	2	48" HEATER & PIVOT ARM SPLICE PLATE
13			
14	MAH00085	4	5/16-18NC X 2"LG HHCS SS
15	MAH00081	12	#10-32NF X 1/2"LG SHCS SS
16	MAH00082	2	3/8-16NC X 2"LG SHCS SS
17			
18	MAH00142	32	5/16-18NC X 1"LG FHSCS SS
19			
20			
21			
22	MBE00007	2	3/8" REGULAR SPLIT LOCK WASHER
23	MBF00006	4	5/16" TYPE 'A' WIDE FLAT WASHER
24	MBF00007	2	3/8" TYPE 'A' WIDE FLAT WASHER
25			
26	MCA00012	1	INTERNAL SNAP RING
27			
28	MJK00002	1	THERMOMETER
29			
30			
31			
32	MJQ00287	1	1/16" X 5" X 13-1/4" GASKET
33	MKI00002	1	100 OHM PLATINUM RTD
34			

48" BUTT PLATE HEATER ASSEMBLYPARTS LIST

ITEM	PART NO.	QTY	DESCRIPTION
35	MBA00061	3	1/4-20NC FINISHED HEX NUT SS
36	MBE00023	3	1/4" REGULAR SPLIT LOCK WASHER SS
37	MLI00002	3.5 FT	3/4" FLEXIBLE CONDUIT
38	MLJ00011	1	3/4" STRAIGHT CONDUIT CONNECTOR
39	MLL00004	13 FT	#18 TYPE TGGT ELECTRICAL WIRE
40	MLL00043	24 FT	#8AWG HI-TEMP WIRE
41	MLM00012	2	CONNECTOR
42	MLM00117	19	RING TERMINAL
43	MLM00125	9	HIGH TEMP. RING TERMINAL
44	MLN00219	1 FT	FIBERGLASS TAPE
45	MAH00050	3	1/4-20NC X 1/2"LG SHCS SS
46	MBA00004	12	#10-24NC HEX NUT
47	6320001	5	HEATER SPLICE PLATE NUT
48	MBE00010	5	9/16" REGULAR SPLIT LOCK WASHER
49	MAE00120	5	1/2-13NC X 1-1/4" LG BHSCS

NOTES:

1. WRAP WITH ITEM 44 (NOT SHOWN) AROUND TERMINAL CONNECTION.
2. INSTALL WITH HIGH TEMPERATURE ANTI-SEIZE COMPOUND.
3. SET & CHECK TEMPERATURE PER SP-9.

DRAWING REVISION HISTORY LISTING

PART NO: 6301101
DESCRIPTION: 48" BUTT PLATE HEATER ASSEMBLY

<u>APPR.</u>	<u>REV</u>	<u>DATE</u>	<u>BY</u>	<u>DESCRIPTION OF REVISION</u>
B	A	7/05/95	TLW	IGES from Bravo to AutoCad. Reduced to 'A' size format. Removed pivot arm.
SWB	B	7/09/96	SS	ADDED SECTION "A-A" TO DRAWING. ADD ITEM #39 MIK00002.
SWB	C	11/22/96	SS	RE-NUMBERED AND RE-ARRANGED BOM AND DRAWING. ADDED #34 (MLM00126)
SWB	D	3/6/97	DJL	REMOVED TERMINAL BLOCK ITEM 34(MLM00126). REMOVED INSERTS ITEMS 29,30, & 31. ADDED ITEMS 35-44. REMOVED NOTE 1. ADDED NOTES 1,2, & 3. ADDED HEATER SCHEMATIC WITH DETAILS B,C & D. DELETED MLN00380 & 223901 FROM PRODUCT STRUCTURE. ITEM 14 P/N WAS MAA00038.(CHANGED TO STAINLESS STEEL)
SWB	E	12/10/98	DJL	INCREASED LENGTH OF ITEM 37, CONDUIT FROM 3' TO 3.5'. INCREASED LENGTH OF ITEM 39, #18 WIRE FROM 12' TO 13'. INCREASED LENGTH OF ITEM 40, #8 WIRE FROM 15' TO 24'. ADDED ITEM 46, #10-24 HEX NUTS.
SWB	-	3/30/00	MRP	REVISED ITEM 25 FROM MBG00010 TO MBF00012 AND INCREASED QUANTITY FROM 10 TO 20. MBG00010 WAS TOO THICK CAUSING COTTER PIN ALIGNMENT PROBLEMS WITH MATING BOLT.
SWB	F	03/28/01	BWW	REVISED TO ADD NOTE 2 FLAG TO ITEM #15 AND CORRECT PICTORALLY ITEM #13.
PJB	G	04/03/02	BEA	CORRECTED HEATER WATTAGE FROM 37,021 TO 35,000 TO MATCH AS BUILT CONDITION.
SWB	H	11/20/03	BWW	REVISED TO REMOVE ITEM 13 (6313701), ITEM 17 (MAH00094), ITEM 19 (MAH00153), ITEM 20 (MBD00032), ITEM 21 (MBE00004), ITEM 25 (MBF00012), AND ITEM 27 (MCH00002). ADDED ITEM 47 (6320001 QTY 5), ITEM 48 (MBE00010 QTY 5), AND ITEM 49 (MAE00120 QTY 5). CHANGES MADE TO SPLICE PLATE CONNECTION HARDWARE TO ELIMINATE DRAG ON HEATER BAG.
JRP	J	08/30/05	BEA	SEPARATED DRAWING INTO SHEETS A AND B. MOVED EXISTING SCHEMATIC & RING TERMINAL DETAILS TO SHEET B. ADDED 415 VOLT SCHEMATIC. REMOVED VOLTAGE CALL OUT FROM TITLE BLOCK.