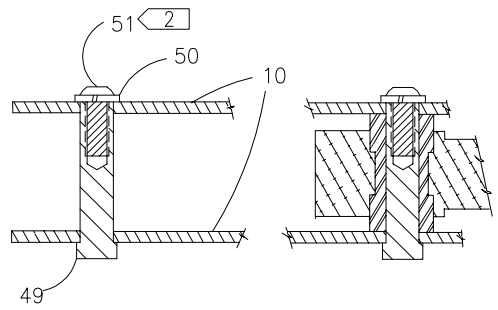




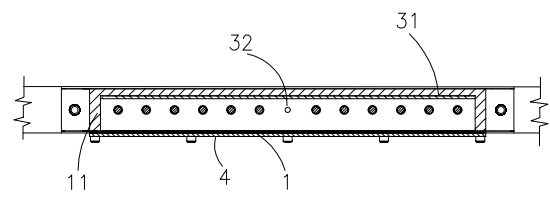
McElroy Manufacturing, Inc.
 The leader by design.
 Tulsa, Oklahoma U.S.A.

DRAWN: TLW	CHECK: BWP	APPR'D: B	DATE: 5/23/95	DWG No: 6300900	SHT No: 3A	REV No: J	PART No: 6300903
#2065A BUTT PLATE HEATER ASSEMBLY							CAD No: 6300903

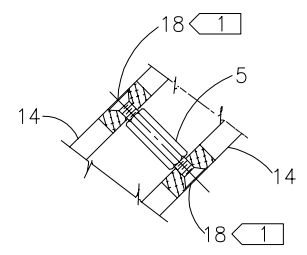
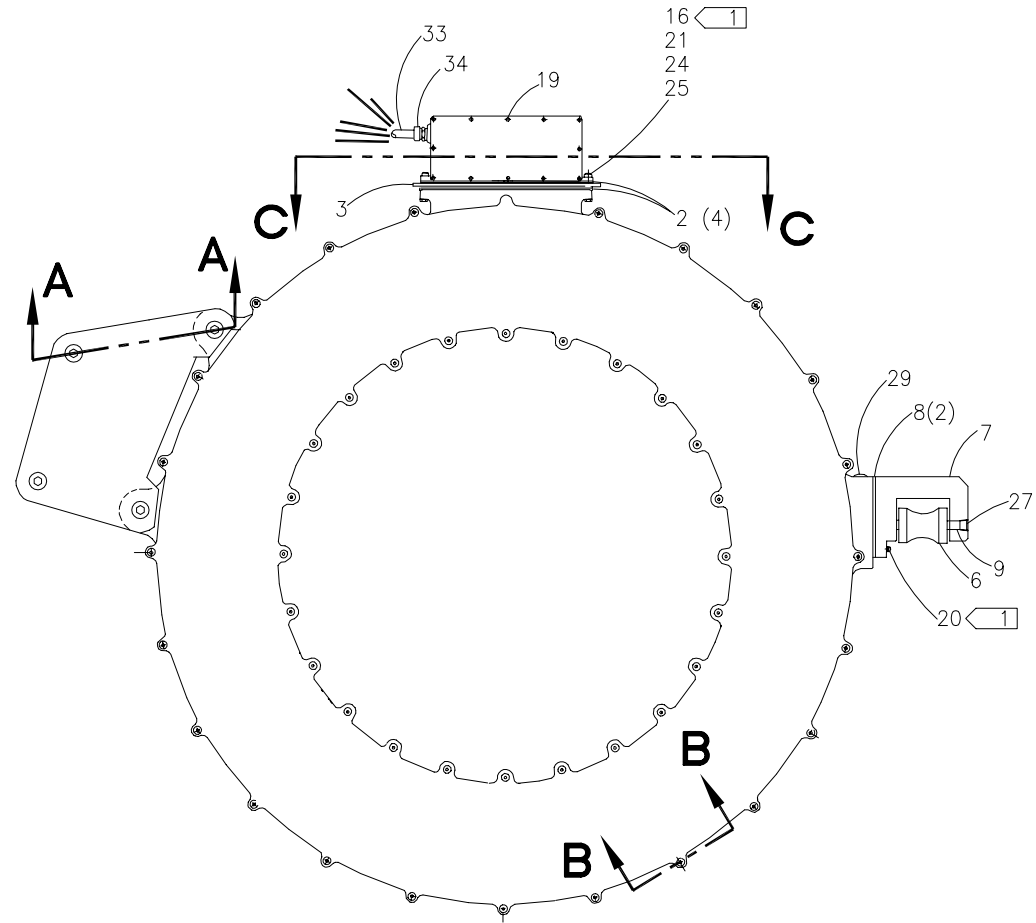
NOTE: THIS DRAWING AND THE INFORMATION CONTAINED THEREIN IS THE CONFIDENTIAL AND PROPRIETARY PROPERTY OF McElroy Manufacturing, Inc. THE DRAWING IS NOT TO BE REPRODUCED IN ANY MANNER, SUBMITTED OUTSIDE PARTIES FOR EXAMINATION, OR USED DIRECTLY OR INDIRECTLY FOR THE PURPOSES OTHER THAN THOSE FOR WHICH IT WAS FURNISHED WITHOUT WRITTEN PERMISSION OF McElroy Manufacturing, Inc.



SECTION **A-A**



SECTION **C-C**



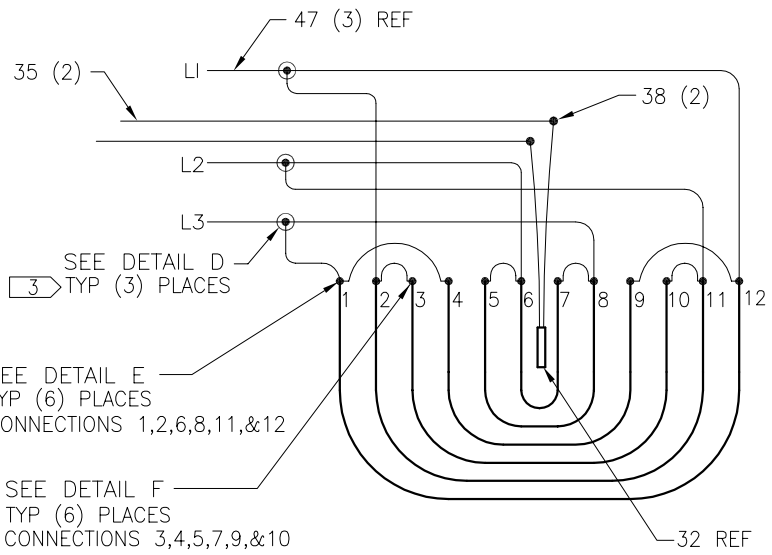
SECTION **B-B**



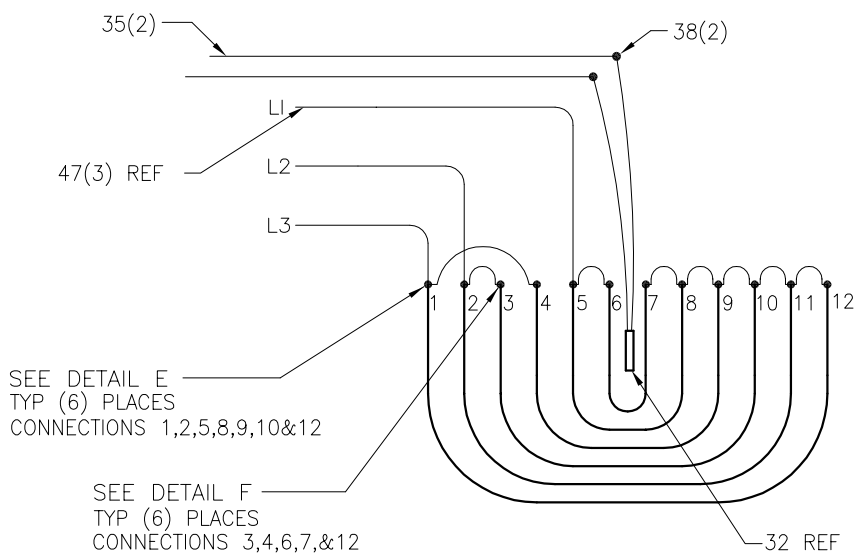
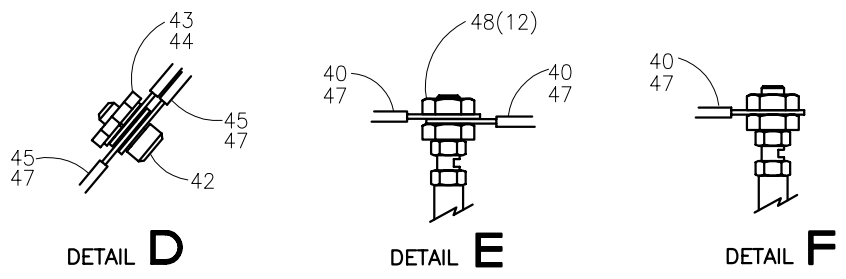
McElroy Manufacturing, Inc.
 The leader by design.
 Tulsa, Oklahoma U.S.A.

DRAWN: TLW	CHECK: BWP	APPRV'D: B	DATE: 5/23/95	DWG No: 6300900	SHT No: 3B	REV No: J	PART No: 6300903
#2065A BUTT PLATE HEATER ASSEMBLY							CAD No: 6300903

NOTE: THIS DRAWING AND THE INFORMATION CONTAINED THEREIN IS THE CONFIDENTIAL AND PROPRIETARY PROPERTY OF McElroy Manufacturing, Inc. THE DRAWING IS NOT TO BE REPRODUCED IN ANY MANNER, SUBMITTED OUTSIDE PARTIES FOR EXAMINATION, OR USED DIRECTLY OR INDIRECTLY FOR THE PURPOSES OTHER THAN THOSE FOR WHICH IT WAS FURNISHED WITHOUT WRITTEN PERMISSION OF McElroy Manufacturing, Inc.



HEATER SCHEMATIC
 220-240V, 50/60Hz, 3Ph
 38,435 WATT



HEATER SCHEMATIC
 415V, 50Hz, 3Ph
 38,435 WATT

#2065A BUTT PLATE HEATER ASSEMBLYPARTS LIST

ITEM	PART NO.	QTY.	DESCRIPTION
	6300903		Assembly
1	2410602	1	TERMINAL ENCLOSURE COVER GASKET
2	2410603	4	TERMINAL ENCLOSURE GASKET
3	3602005	1	HEAT SINK
4	3603103	1	TERMINAL ENCLOSURE COVER
5	3617301	42	COUPLING NUT
6	4807501	1	ROLLER
7	4815601	1	ROLLER HOUSING
8	4815802	2	GASKET/ROLLER HOUSING
9	4816301	1	PIN/ROLLER
10	6304901	2	SPLICE PLATE
11	6308601	1	TERMINAL ENCLOSURE
12			
13	6314204	1	65" HEATER BODY
14	6314301	2	65" BUTT PLATE
15			
16	MAH00155	2	3/8-16NC X 3"LG SHCS SS
17			
18	MAH00142	94	5/16-18NC X 1"LG FHSCS SS
19	MAH00154	12	#10-32NF X 1/2"LG RHPMS
20	MAH00083	4	5/16-18NC X 2"LG SHCS
21	MBA00007	2	3/8-16NC FINISHED HEX NUT
22			
23			
24	MBE00007	2	3/8" REGULAR SPLIT LOCK WASHER
25	MBF00007	2	3/8" TYPE 'A' WIDE FLT WASHER
26			
27	MFA00039	1	12MPT PLUG
28			
29	MJK00002	1	THERMOMETER
30			
31	MJQ00287	1	1/16" X 5" X 13-1/4" GASKET
32	MKI00002	1	100 OHM PLATINUM RTD
33	MLI00002	4 FT	3/4" FLEXIBLE CONDUIT
34	MLJ00011	1	3/4" X STR CONDUIT CONNECTOR
35	MLL00004	14 FT	#18 TYPE TAGT ELECTRICAL WIRE
36			
37			
38	MLM00012	2	CONNECTOR
39			
40	MLM00117	18	RING TERMINAL
41			

#2065A BUTT PLATE HEATER ASSEMBLYPARTS LIST

ITEM	PART NO.	QTY.	DESCRIPTION
42	MAH00050	3	1/4-20NC X 1/2"LG SHCS SS
43	MBA00061	3	1/4-20NC FINISHED HEX NUT SS
44	MBE00023	3	1/4" REGULAR SPLIT LOCK WASHER SS
45	MLM00125	9	HIGH TEMP. RING TERMINAL
46	MLN00219	1 FT	FIBERGLASS TAPE
47	MLL00043	24 FT	#8AWG HI-TEMP WIRE
48	MBA00004	12	#10-24NC HEX NUT
49	6320001	4	HEATER SPLICE PLATE NUT
50	MBE00010	4	9/16" REGULAR SPLIT LOCK WASHER
51	MAE00120	4	1/2-13NC X 1-1/4" LG BHSCS

NOTES:

1. INSTALL WITH HIGH TEMPERATURE ANTI-SIEZE COMPOUND.
2. FOR REPLACEMENT BUTT PLATES ORDER A6314301 BUTT PLATE KIT.
3. WRAP WITH ITEM 46 (NOT SHOWN) AROUND TERMINAL CONNECTIONS.
4. SET & CHECK TEMPERATURE PER SP-9.

DRAWING REVISION HISTORY LISTING

PART NO: 6300903
DESCRIPTION: #2065A BUTT PLATE HEATER ASSEMBLY

<u>APPR.</u>	<u>REV</u>	<u>DATE</u>	<u>BY</u>	<u>DESCRIPTION OF REVISION</u>
SWB	A	5/23/95	TLW	Scanned & reduced to 'A' size format. Removed pivot arm. Combined sheets 3 and 4.
SWB	B	7/09/96	SS	CHANGE ITEM #13 MAH00081 TO MAH00154. CHANGE ITEM #25 MAH00143 TO MAH00142.
SWB	C	11/25/96	SS	RE-NUMBERED AND RE-ARRANGED BOM AND DRAWING. ADDED #41 (MLM00126).
SWB	D	3/5/97	DJL	DELETED ITEMS 30,36,37,39,41. ITEM 40(MLM00117) QTY WAS 16, IS 18. ADDED ITEMS 42-47. DELETED MLN00380 & 223901 FROM PRODUCT STRUCTURE. ADDED HEATER SCHEMATIC AND DETAILS D,E, & F. ITEM 15 P/N WAS MAC00035 (CHANGED TO STAINLESS STEEL) NOTE 3 WAS THREADED INSERT - INSTALL IN 6314204 HEATER BODY AT FIVE LOCATIONS. QTY OF ITEM 25 WAS 4, IS 2. ADDED NOTE 4.
SWB	E	11/20/97	DJL	ITEM 27 WAS INT SNAP RING MCA00012. CHANGED HEATER ROLLER HOUSING TO ADD PIPE PLUG.
SWB	F	11/8/98	DJL	REVISED TO AS BUILT CONDITION. INCREASED LENGTH ON ITEM 35, #18 WIRE FROM 12' TO 14'. INCREASED LENGTH ON ITEM 47, #8 WIRE FROM 15' TO 24'. ADDED ITEM 48, #10 HEX NUTS.
TLW	-	5/24/99	MRP	CORRECTED ITEM 16 FROM MAH00082 TO MAH00155. WRONG LENGTH BOLT CALLED OUT.
SWB	-	3/30/00	MRP	REVISED ITEM 26 FROM MBG00010 TO MBF00012 AND INCREASED QUANTITY FROM 8 TO 16.MBG00010 WAS TOO THICK CAUSING COTTER PIN ALIGNMENT PROBLEMS WITH MATING BOLT.
SWB	G	03/28/01	BWW	REVISED TO CHANGE ITEM #20 FROM MAH00157 TO MAH00083. MAH00157 WAS TOO LONG.
SWB	H	11/20/03	BWW	REVISED TO REMOVE ITEM 12 (6313701), ITEM 15 (MAH00046), ITEM 17 (MAH00094), ITEM 22 (MBD00032), ITEM 23 (MBE00004), ITEM 26 (MBF00012), AND ITEM 28 MCH00002. ADDED ITEM 49 (6320001) QTY 4, ITEM 50 (MBE00010 QTY 4) AND ITEM 51 (MAE00120 QTY 4). CHANGES MADE TO SPLICE PLATE CONNECTION HARDWARE TO ELIMINATE DRAG ON HEATER BAG.
JRP	J	8/30/05	BEA	SEPARATED DRAWING INTO SHEETS A AND B. MOVED EXISTING SCHEMATIC & RING TERMINAL DETAILS TO SHEET B. ADDED 415 VOLT SCHEMATIC. REMOVED VOLTAGE CALL OUT FROM TITLE BLOCK.