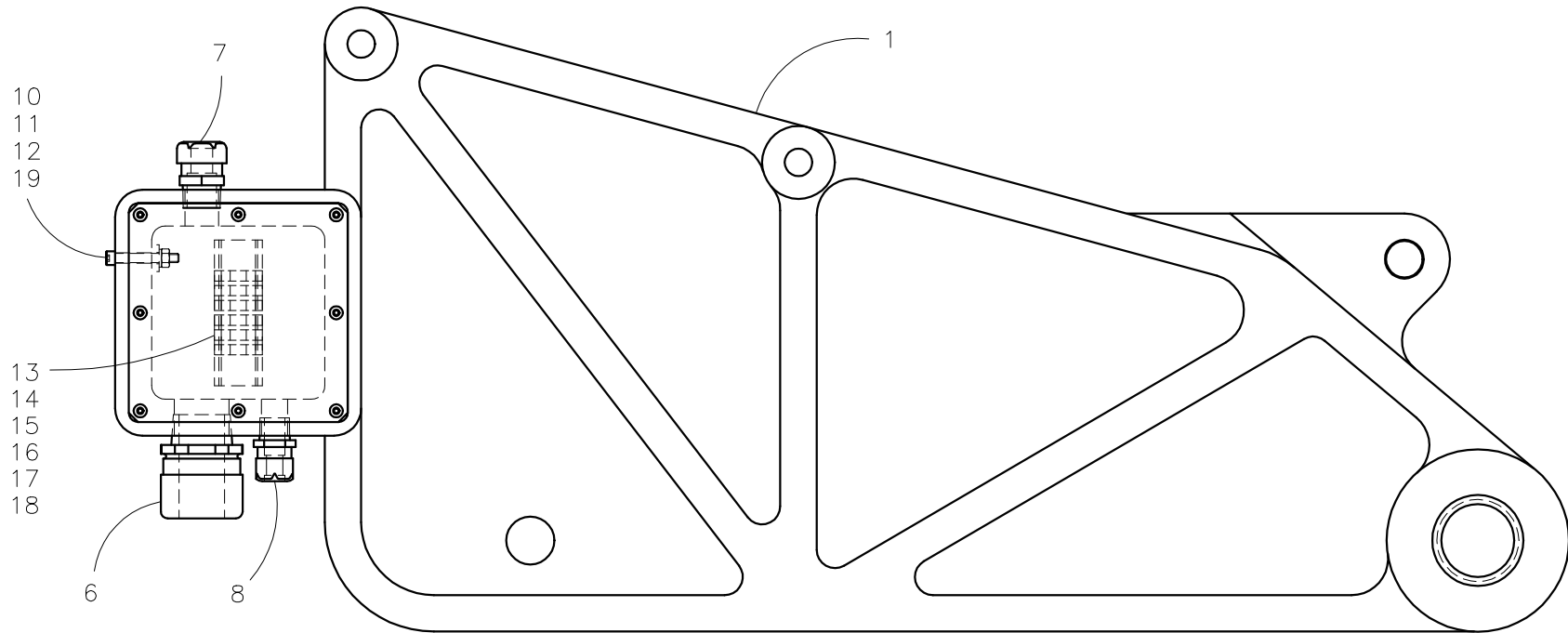
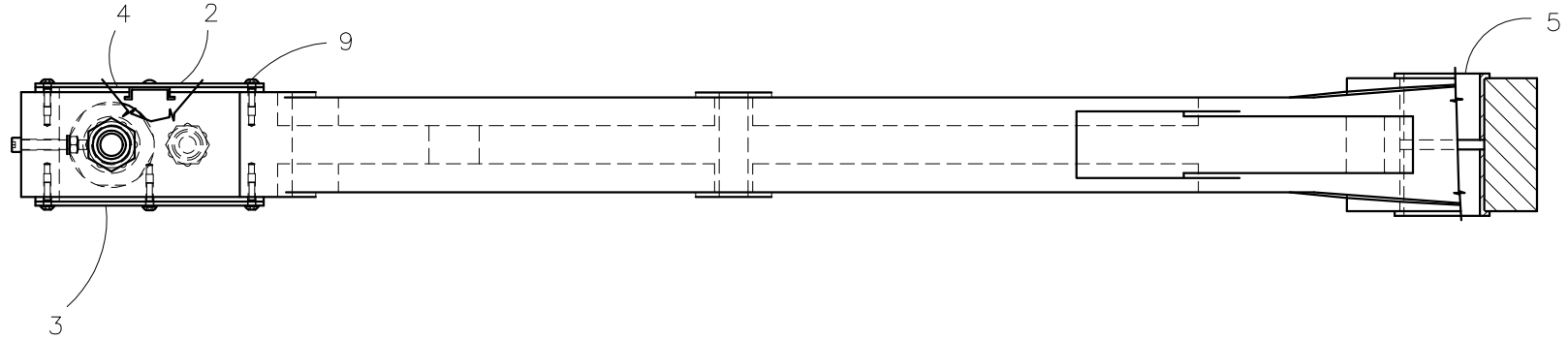




McElroy Manufacturing, Inc.
 The leader by design.
 Tulsa, Oklahoma U.S.A.

DRAWN: TLW	CHECK: BWP	APPRV'D: B	DATE: 11/22/95	DWG No: 6300800	SHT No: 1	REV No: F	PART No: 6300801
#2065A HEATER PIVOT ARM / JUNCTION BOX ASSEMBLY							CAD No: 6300801

NOTE: THIS DRAWING AND THE INFORMATION CONTAINED THEREIN IS THE CONFIDENTIAL AND PROPRIETARY PROPERTY OF McElroy Manufacturing, Inc. THE DRAWING IS NOT TO BE REPRODUCED IN ANY MANNER, SUBMITTED OUTSIDE PARTIES FOR EXAMINATION, OR USED DIRECTLY OR INDIRECTLY FOR THE PURPOSES OTHER THAN THOSE FOR WHICH IT WAS FURNISHED WITHOUT WRITTEN PERMISSION OF McElroy Manufacturing, Inc.



#2065A HEATER PIVOT ARM / JUNCTION BOX ASSEMBLYParts List

ITEM	PART NO.	QTY.	DESCRIPTION
	6300801		ASSEMBLY
1	6302505	1	HEATER PIVOT ARM
2	3608005	1	RAIL / COVER WELDMENT
3	3608006	1	COVER
4	3608007	2	GASKET
5	4807704	2	BUSHING
6	3620401	1	STRAIN RELIEF MODIFICATION
7	MLJ00011	1	3/4 X STRAIGHT CONDUIT CONNECTOR
8	MLK00015	1	1/2 STRAIN RELIEF CONNECTOR
9	MAH00111	16	#10-24NC X 1/2 LG HHWF ST SCR
10	MAA00007	1	1/4-20NC. X 1 3/4" LG. HHCS STL PL
11	MBE00005	1	1/4" LOCK WASHER
12	MBA00005	1	1/4-20NC. HEX NUT
13	MLM00050	3	TERMINAL
14	MLM00051	2	TERMINAL
15	MLM00055	1	END COVER
16	MLM00056	2	END CLAMP
17	MLM00057	2	TRANS MARKER CARRIER
18	MLM00060	3	TRANS MARKER CARRIER
19	MLN00160	1	SOLDERLESS GROUND LUG

DRAWING REVISION HISTORY LISTING

PART NO: 6300801

DESCRIPTION: #2065A HEATER PIVOT ARM / JUNCTION BOX ASSEMBLY

<u>APPR.</u>	<u>REV</u>	<u>DATE</u>	<u>BY</u>	<u>DESCRIPTION OF REVISION</u>
SWB	D	12/4/95	TLW	IGES from Bravo to AutoCad. Reduced to 'A' size format. Created typed parts list.
SWB	E	5/15/96	AH	CHANGED ITEM 5 FROM 6302504 TO 4807704.
TLW	---	7/22/98	TGW	REVISED ITEM 9 P/N FROM MAH00003 TO MAH00111.
TLW	F	8/30/00	RLE	ADDED ITEM #6 3620401, #7 MLJ00011, #8 MLK00015, #13 MLM00050, #14 MLM00051, #15 MLM00055, #16 MLM00056, #17 MLM00057, #18 MLM00060 & #19 MLN00160. TO MATCH AS400 PRODUCT STRUCTURE.