



McElroy Manufacturing, Inc.

The leader by design.

Tulsa, Oklahoma U.S.A.

DRAWN: TLW

CHECK: BWP

APPRV'D: B

DATE: 11/27/95

DWG No: 4825600

SHT No: 1

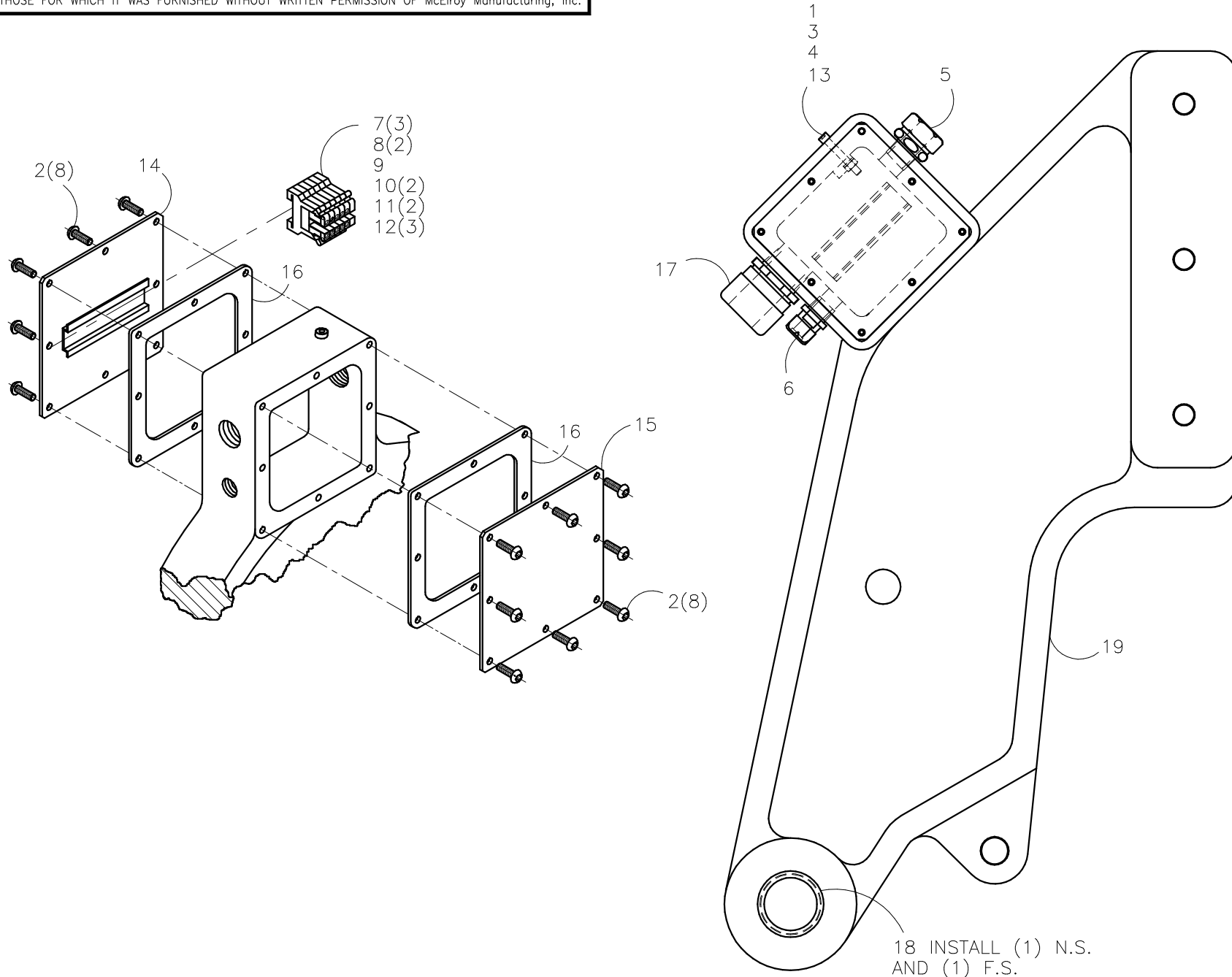
REV No: B

PART No: 4825601

#1648A HEATER PIVOT ARM/JUNCTION BOX ASSEMBLY

CAD No: 4825601

NOTE: THIS DRAWING AND THE INFORMATION CONTAINED THEREIN IS THE CONFIDENTIAL AND PROPRIETARY PROPERTY OF McElroy Manufacturing, Inc. THE DRAWING IS NOT TO BE REPRODUCED IN ANY MANNER, SUBMITTED OUTSIDE PARTIES FOR EXAMINATION, OR USED DIRECTLY OR INDIRECTLY FOR THE PURPOSES OTHER THAN THOSE FOR WHICH IT WAS FURNISHED WITHOUT WRITTEN PERMISSION OF McElroy Manufacturing, Inc.



**#1648 HEATER PIVOT ARM/JUNCTION BOX ASSEMBLY**Parts List

ITEM	PART NO.	QTY.	DESCRIPTION
	<b>4825601</b>		<b>ASSEMBLY</b>
1	MAC00058	1	1/4-20NC X 1-3/4" LG SHCS STL BL
2	MAH00111	16	#10-24NC X 1/2" LG HHWF ROLL FORMING ST SCR
3	MBA00005	1	1/4-20NC FINISHED HEX NUT SLT PL
4	MBE00005	1	1/4" REG SPLIT LK WASHER STL PL
5	MLJ00011	1	CONDUIT CONNECTOR 3/4" X STR.
6	MLK00015	1	1/2" STRAIN RELIEF CONNECTOR
7	MLM00050	3	TERMINAL
8	MLM00051	2	TERMINAL
9	MLM00055	1	END COVER
10	MLM00056	2	END CLAMP
11	MLM00057	2	TRANSPARENT MARKER CARRIER
12	MLM00060	3	TRANSPARENT MARKER CARRIER
13	MLN00160	1	SOLDERLESS GROUND LUG
14	3608005	1	COVER W/RAIL-HEATER PIVOT ARM
15	3608006	1	COVER-PIVOT ARM/JUNCTION BOX
16	3608007	2	GASKET-PIVOT ARM/JUNCTION BOX
17	3620401	1	STRAIN RELIEF MODIFICATION
18	4807704	2	BUSHING MODIFICATION-PIVOT ARM
19	4807710	1	HEATER PIVOT ARM

**NOTES:**

1. For 48" Electrical Schematic (230V, 60Hz, 3Ph) and Parts List See 4826200 sht. 1

## DRAWING REVISION HISTORY LISTING

**PART NO:** 4825601

**DESCRIPTION:** #1648A HEATER PIVOT ARM/JUNCTION BOX ASSEMBLY

<u>APPR.</u>	<u>REV</u>	<u>DATE</u>	<u>BY</u>	<u>DESCRIPTION OF REVISION</u>
B	A	12/04/95	TLW	IGES from Bravo to AutoCad. Reduced to 'A' size format. Created typed parts list.
SWB	B	04/27/98	TLW	REVISED PRINT TO SHOW ELECTRICAL ITEMS 7 THRU 13 TO STANDARDIZE WITH 24 AND 36 PIVOT ARMS AND REVISED ITEM #2 MAE00024 TO MAH00111 SELF TAPPING SCREW.