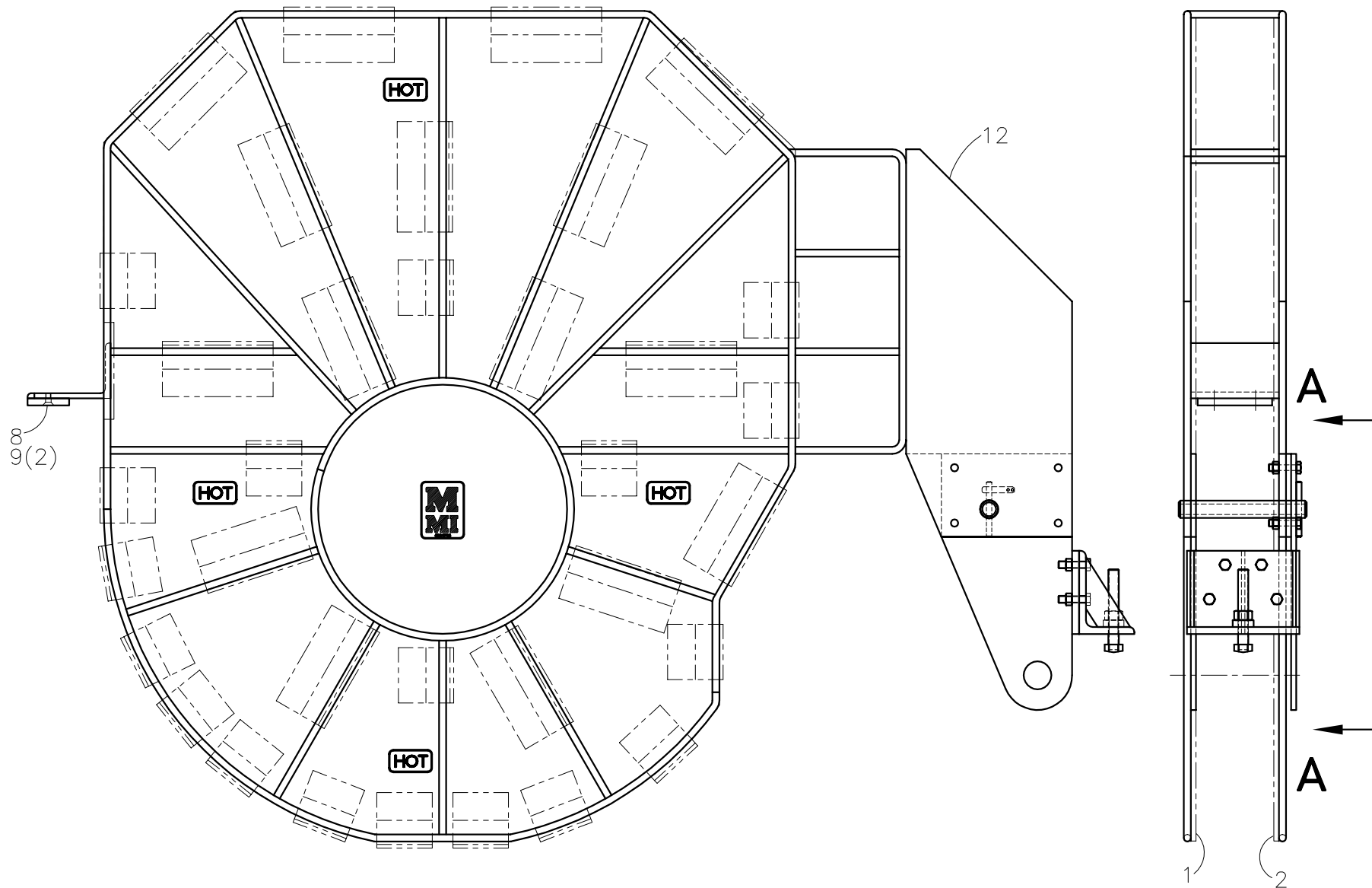




**McElroy Manufacturing, Inc.**  
The leader by design.  
Tulsa, Oklahoma U.S.A.

DRAWN: DJL	CHECK: BWP	APPRV'D: SWB	DATE: 12/3/97	DWG No: 4824800	SHT No: 8A	REV No: C	PART No: 4824808
#1648A HEATER PANEL & FRAME ASSEMBLY							CAD No: 4824808

NOTE: THIS DRAWING AND THE INFORMATION CONTAINED THEREIN IS THE CONFIDENTIAL AND PROPRIETARY PROPERTY OF McElroy Manufacturing, Inc. THE DRAWING IS NOT TO BE REPRODUCED IN ANY MANNER, SUBMITTED OUTSIDE PARTIES FOR EXAMINATION, OR USED DIRECTLY OR INDIRECTLY FOR THE PURPOSES OTHER THAN THOSE FOR WHICH IT WAS FURNISHED WITHOUT WRITTEN PERMISSION OF McElroy Manufacturing, Inc.



UNLESS NOTED OTHERWISE: (3) PLC. DIM'S .XXX =  $\pm 0.005"$  (2) PLC. DIM'S .XX =  $\pm 0.010"$  FRACTIONAL DIM'S =  $\pm 1/32"$  ANGULAR DIM'S =  $\pm 1/4"$  REMOVE ALL BURRS BREAK ALL SHARP EDGES STAMP OR ETCH P/N ON ALL DETAIL PARTS

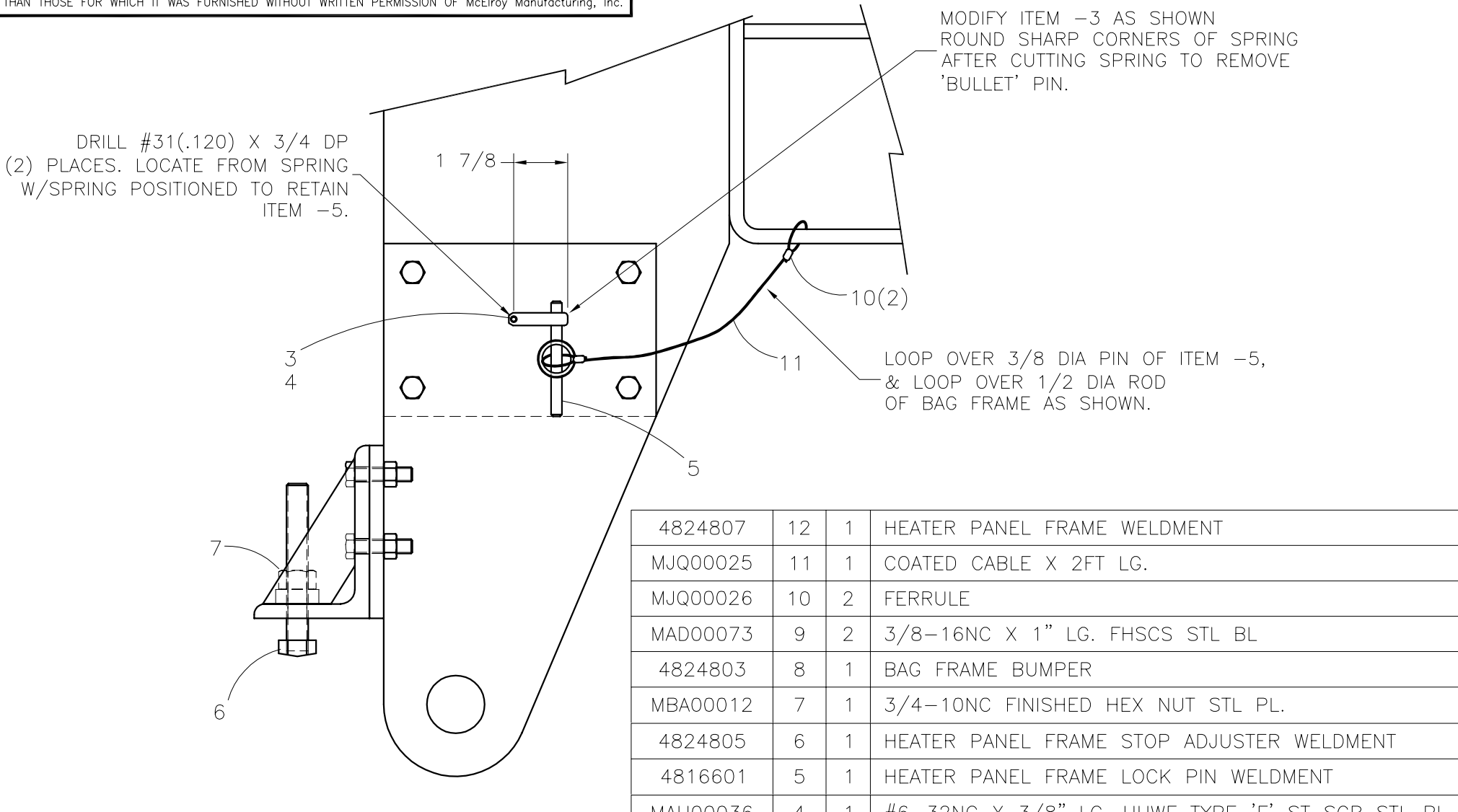
MMI NUMBER	ITEM	QTY.	SIZE AND DESCRIPTION



**McElroy Manufacturing, Inc.**  
The leader by design.  
Tulsa, Oklahoma U.S.A.

DRAWN: DJL	CHECK: BWP	APPRV'D: SWB	DATE: 12/3/97	DWG No: 4824800	SHT No: 8B	REV No: C	PART No: 4824808
#1648A HEATER PANEL & FRAME ASSEMBLY							CAD No: 4824808

NOTE: THIS DRAWING AND THE INFORMATION CONTAINED THEREIN IS THE CONFIDENTIAL AND PROPRIETARY PROPERTY OF McElroy Manufacturing, Inc. THE DRAWING IS NOT TO BE REPRODUCED IN ANY MANNER, SUBMITTED OUTSIDE PARTIES FOR EXAMINATION, OR USED DIRECTLY OR INDIRECTLY FOR THE PURPOSES OTHER THAN THOSE FOR WHICH IT WAS FURNISHED WITHOUT WRITTEN PERMISSION OF McElroy Manufacturing, Inc.



VIEW **A-A**

4824807	12	1	HEATER PANEL FRAME WELDMENT
MJQ00025	11	1	COATED CABLE X 2FT LG.
MJQ00026	10	2	FERRULE
MAD00073	9	2	3/8-16NC X 1" LG. FHSCS STL BL
4824803	8	1	BAG FRAME BUMPER
MBA00012	7	1	3/4-10NC FINISHED HEX NUT STL PL.
4824805	6	1	HEATER PANEL FRAME STOP ADJUSTER WELDMENT
4816601	5	1	HEATER PANEL FRAME LOCK PIN WELDMENT
MAH00036	4	1	#6-32NC X 3/8" LG. HHWF TYPE 'F' ST SCR STL PL.
402301	3	1	SPRING CLIP - MODIFY AS SHOWN
4824704	2	1	HEATER INSULATOR PANEL
4824705	1	1	HEATER INSULATOR PANEL

UNLESS NOTED OTHERWISE: (3) PLC. DIM'S .XXX = ±0.005" (2) PLC. DIM'S .XX = ±0.010" FRACTIONAL DIM'S = ±1/32" ANGULAR DIM'S = ±1/4" REMOVE ALL BURRS BREAK ALL SHARP EDGES STAMP OR ETCH P/N ON ALL DETAIL PARTS

MMI NUMBER	ITEM	QTY.	SIZE AND DESCRIPTION
			ASSEMBLY

## DRAWING REVISION HISTORY LISTING

**PART NO:** 4824808

**DESCRIPTION:** #1648A HEATER PANEL & FRAME ASSEMBLY

<u>APPR.</u>	<u>REV</u>	<u>DATE</u>	<u>BY</u>	<u>DESCRIPTION OF REVISION</u>
TLW	A	03/17/98	RLE	CORRECTED ITEM 12, PART NO. WAS 4824707.
TLW	B	7/16/99	MRP	CHANGED QUANTITY OF ITEM #4 (MAH00036) FROM 2 TO 1 AND ALTERED DRAWING ACCORDINGLY.
SWB	C	3/31/04	ALK	REVISED TO CORRECT ITEM 12, FROM 4824707 TO 4824807, WAS CHANGED INADVERTENTLY IN THE LAST REV.