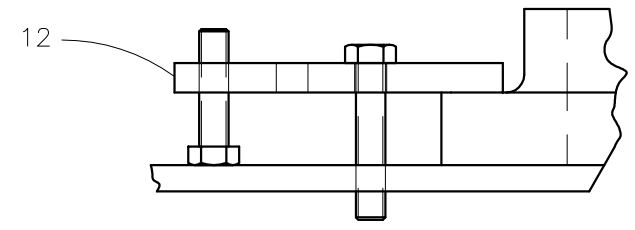
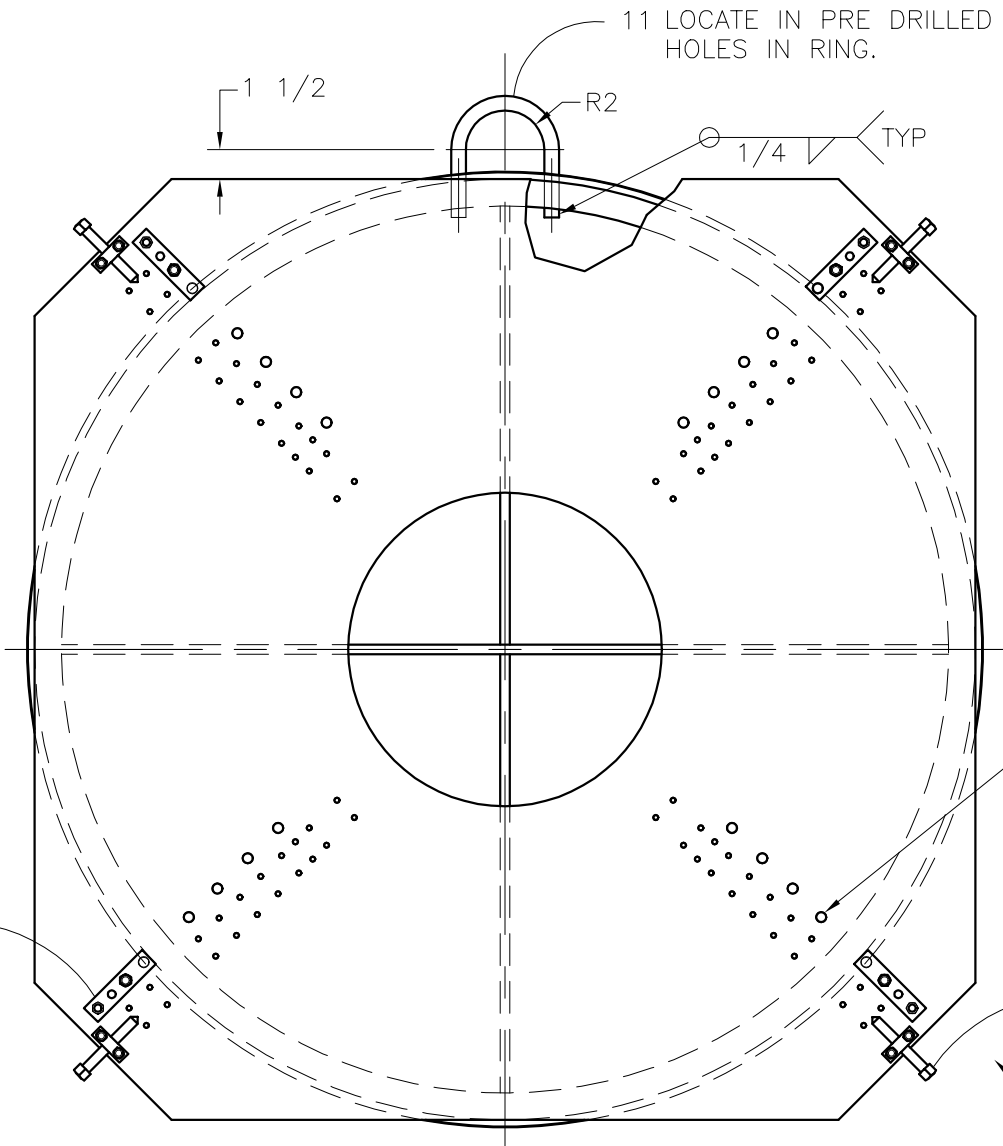




McElroy Manufacturing, Inc.
 The leader by design.
 Tulsa, Oklahoma U.S.A.

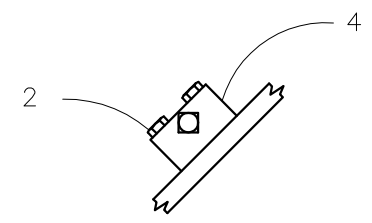
DRAWN: BB	CHECK: BWP	APPRV'D: TLW	DATE: 10/06/97	DWG No: 4812600	SHT No: 1	REV No: L	PART No: 4812601
#1648 STUB END HOLDER ASSEMBLY							CAD No: 4812601

NOTE: THIS DRAWING AND THE INFORMATION CONTAINED THEREIN IS THE CONFIDENTIAL AND PROPRIETARY PROPERTY OF McElroy Manufacturing, Inc. THE DRAWING IS NOT TO BE REPRODUCED IN ANY MANNER, SUBMITTED OUTSIDE PARTIES FOR EXAMINATION, OR USED DIRECTLY OR INDIRECTLY FOR THE PURPOSES OTHER THAN THOSE FOR WHICH IT WAS FURNISHED WITHOUT WRITTEN PERMISSION OF McElroy Manufacturing, Inc.



TYPICAL CLAMPING DETAIL
 USING A4812608 CLAMP KIT

INSTALL ITEM 9
 KEENSERT (24) PLCS



VIEW A-A

#1648 STUB END HOLDER ASSEMBLYParts List

ITEM	PART NO.	QTY.	DESCRIPTION
	4812601		ASSEMBLY
1	805703	4	CLAMP SCREW
2	MAB00035	8	5/16-18 NC X 1-1/2" LG. HHCS
3	MAC00098	4	3/8-16 NC X 2" LG. SHCS
4	3614401	4	ADJ. SCREW BLOCK
5	4817601	3	REST BUTTON SPACER
6			
7			
8			
9	MJM00003	24	KEENSERT
10	4812606	1	STUB END HOLDER
11		1	AISI 6061-T6 3/4" DIA. X 13-1/2" LG. BEFORE BENDING
12	A4812608	1	24/36/48 STUB END CLAMP KIT

NOTES:

1. INSTALL IN INNER MOVEABLE JAW ONLY.
2. ITEM #5 CAN BE USED OVER THE FACER STOPS IN THE MOVEABLE JAW FOR EXTENSIONS.

DRAWING REVISION HISTORY LISTING

PART NO: 4812601
DESCRIPTION: #1648 STUB END HOLDER ASSEMBLY

<u>APPR.</u>	<u>REV</u>	<u>DATE</u>	<u>BY</u>	<u>DESCRIPTION OF REVISION</u>
TLW	J	10/06/97	BB	REDRAWN TO 'A' SIZE FORMAT. PLACED WELDMENT 4812602 ON SHEET 5. PLACED MACHINE DRAWING 4812606 ON SHEET 6. PLACED BASE PLATE 4812607 ON SHEET 7.
TLW	---	1/25/99	TGW	REVISED ITEM #6 DESCRIPTION FROM HOLD DOWN CLAMP TO STUB END HOLDER SPACER & ADDED NOTE.
TLW	K	4/4/01	RLE	REMOVED 3614301 QTY. (16), MAC00102 QTY. (4) & MAC00100 QTY. (4). REVISED 4812605 QTY. (4) TO A4812608 QTY. (1). REVISION IS TO USE STANDARD BOLTS & CLAMPS FOR 24/36/48 STUB END HOLDERS & ALLOW FOR CLAMPING ON ADDITIONAL STUB END SIZES. REMOVED NOTE "THIS ASSEMBLY INCLUDES HARDWARE TO CLAMP STUB END FLANGES WITH THICKNESSES BETWEEN 1.25 & 2.625." & ADDED NOTE #1 & #2.
SWB	L	9/26/01	RLE	ADDED SIDE VIEW OF CLAMP BLOCK.