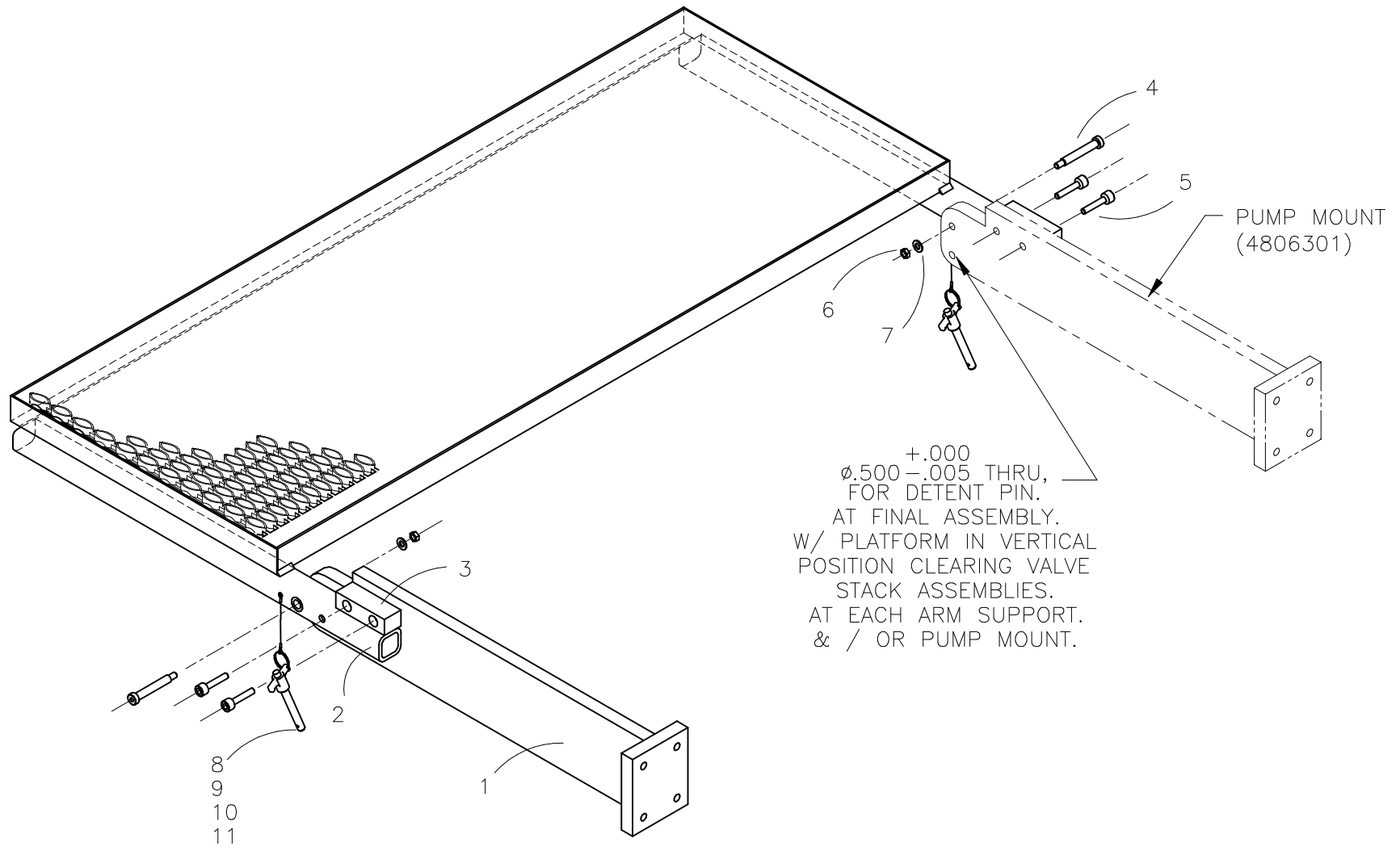




McElroy Manufacturing, Inc.
 The leader by design.
 Tulsa, Oklahoma U.S.A.

DRAWN: AH	CHECK: BWP	APPRV'D: B	DATE: 6/11/96	DWG No: 4806400	SHT No: 1	REV No: K	PART No: 4806401
1648A OPERATOR PLATFORM ASSEMBLY							CAD No: 4806401

NOTE: THIS DRAWING AND THE INFORMATION CONTAINED THEREIN IS THE CONFIDENTIAL AND PROPRIETARY PROPERTY OF McElroy Manufacturing, Inc. THE DRAWING IS NOT TO BE REPRODUCED IN ANY MANNER, SUBMITTED OUTSIDE PARTIES FOR EXAMINATION, OR USED DIRECTLY OR INDIRECTLY FOR THE PURPOSES OTHER THAN THOSE FOR WHICH IT WAS FURNISHED WITHOUT WRITTEN PERMISSION OF McElroy Manufacturing, Inc.



+ .000
 Ø.500 - .005 THRU,
 FOR DETENT PIN.
 AT FINAL ASSEMBLY.
 W/ PLATFORM IN VERTICAL
 POSITION CLEARING VALVE
 STACK ASSEMBLIES.
 AT EACH ARM SUPPORT.
 & / OR PUMP MOUNT.

1648A OPERATOR PLATFORM ASSEMBLYParts List

ITEM	PART NO.	QTY.	DESCRIPTION
	4806401	1	ASSEMBLY
1.	4806402	1	OPERATOR PLATFORM SUPPORT ARM MACHINING
2.	4806409	1	OPERATOR PLATFORM WELDMENT
3.	4806404	2	OPERATOR PLATFORM STOP BLOCK
4.	MAF00052	2	1/2 DIA X 3"LG SHLD SCR STL BL
5.	MAC00143	4	1/2-13NC X 2"LG SHCS STL BL
6.	MBC00007	2	3/8-16NC FINISHED HEX NYL LK NUT STL PL
7.	MBF00007	2	3/8" TYPE 'A' WIDE FLT WASHER STL PL
8.	MCE00019	2	1/2" DIA X 3.00" GRIP DETENT PIN
9.	MJQ00025	2.34'	COATED CABLE .045 THK
10.	MJQ00046	4	FERRULE
11.	MAH00036	2	#6-32NC X 3/8"LG HHWF TYPE 'F'ST SCR STL PL

DRAWING REVISION HISTORY LISTING

PART NO: 4806401

DESCRIPTION: 1648A OPERATOR PLATFORM ASSEMBLY

<u>APPR.</u>	<u>REV</u>	<u>DATE</u>	<u>BY</u>	<u>DESCRIPTION OF REVISION</u>
SWB	H	6/11/96	AH	REDRAWN TO "A" SIZE . SEPARATED TO INDIVIDUAL MACHINE & WELDING DRAWINGS SHEETS 2 THRU 9. REMOVED BRONZE BUSHINGS FROM PIVOT JOINT. REMOVED SUPPORT END CAPS ON PIVOT END, FOR DRAINAGE THRU SUPPORT TUBE.
SWB	J	7/2/96	AH	REMOVED WELD OPERATION @ ASSEMBLY TO PLATFORM WELDMENT. RENUMBERED ASSEMBLY DWG. TO CORRECT CALLOUT.
SWB	K	8/21/96	SWB	CHANGED 78-13/64" OVERALL AND 78" GRIT STRUT TO 60".