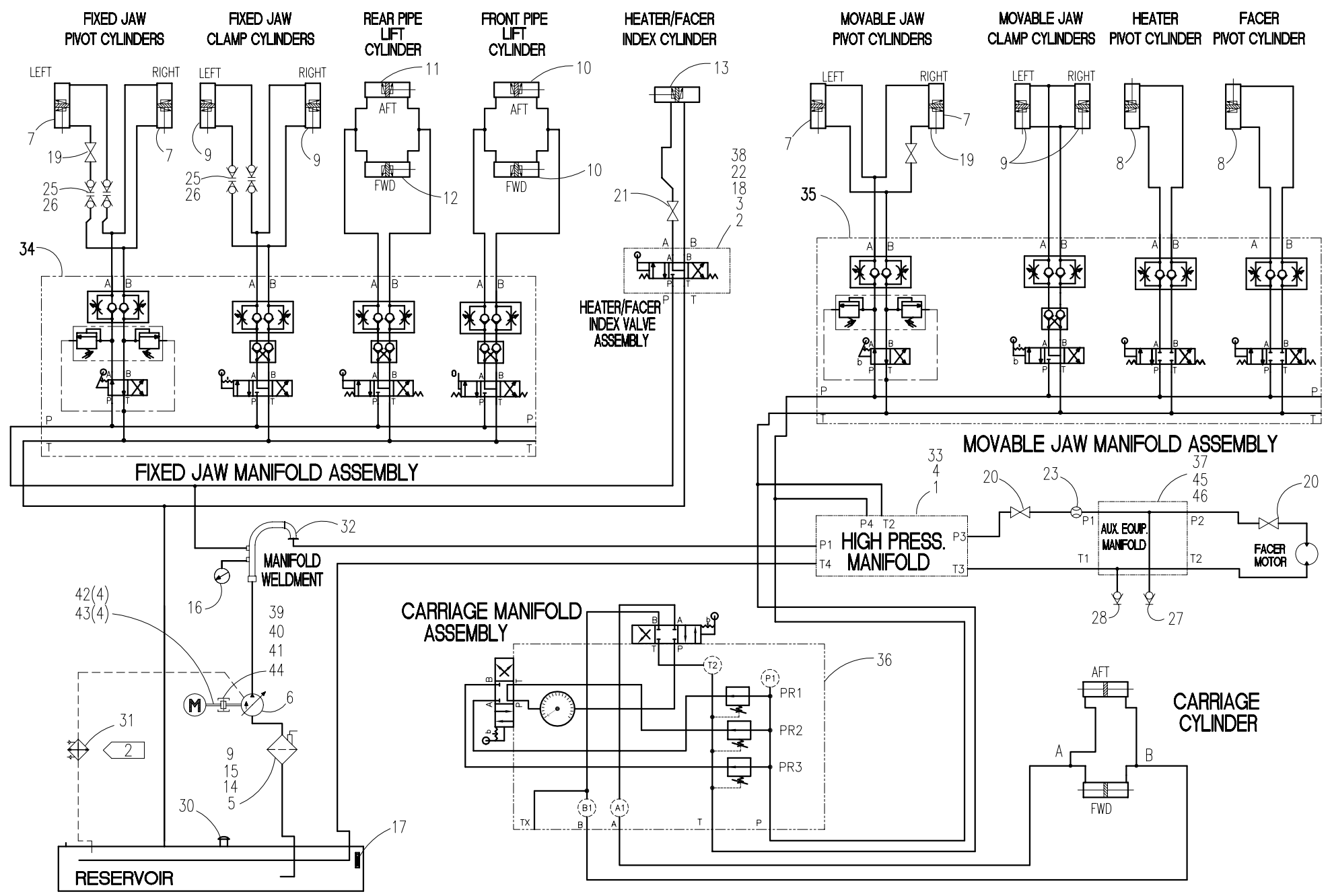




NOTE: THIS DRAWING AND THE INFORMATION CONTAINED THEREIN IS THE CONFIDENTIAL AND PROPRIETARY PROPERTY OF McElroy Manufacturing, Inc. THE DRAWING IS NOT TO BE REPRODUCED IN ANY MANNER, SUBMITTED OUTSIDE PARTIES FOR EXAMINATION, OR USED DIRECTLY OR INDIRECTLY FOR THE PURPOSES OTHER THAN THOSE FOR WHICH IT WAS FURNISHED WITHOUT WRITTEN PERMISSION OF McElroy Manufacturing, Inc.



**#1648 HYDRAULIC SCHEMATIC**Parts List

ITEM	PART NO.	QTY.	DESCRIPTION
	<b>4800601</b>		<b>ASSEMBLY</b>
1	MAB00032	2	5/16-18NC x 3/4 LG. HHCS
2	MAC00040	4	#10-24NC x 1" LG. SHCS
3	MBE00004	4	#10 LOCK WASHER
4	MBE00006	2	5/16" LOCK WASHER
5	MBE00009	4	1/2" LOCK WASHER
6	MEA00017	1	VANE PUMP
7	MEB00028	4	2-1/2B x 9S x1R HYDRAULIC CYLINDER
8	MEB00029	2	3-1/4B x 10S x 1-3/8R HYDRAULIC CYLINDER
9	MEB00118	4	4B x 4S x 1-1/2R HYDRAULIC CYLINDER
10	MEB00119	2	5B x 7S x 1-1/2R HYDRAULIC CYLINDER
11	MEB00120	2	5B x 7S x 1-1/2R HYDRAULIC CYLINDER
12			
13	MEB00122	1	2B x 11-3/8S x 1R HYDRAULIC CYLINDER
14	MED00016	1	FILTER HEAD
15	MED00018	1	FILTER ELEMENT
16	MEE00005	1	1500PSI/BAR PRESSURE GAUGE
17	MEE00014	1	5" SIGHT GAUGE W/ THERMOMETER
18	MEF00015	1	DIRECTIONAL VALVE
19	MEI00001	2	3/8NPT BALL VALVE
20	MEI00003	2	1/2NPT BALL VALVE
21	MEI00005	1	1/4NPT BALL VALVE
22	MEL00005	1	SUBPLATE
23	MEP00014	1	1/2NPFT FLOW METER
24			
25	MFH00001	4	1/4FNPT QUICK DISCONNECT COUPLER
26	MFH00002	4	1/4FNPT QUICK DISCONNECT NIPPLE
27	MFH00003	1	3/8FNPT QUICK DISCONNECT COUPLER
28	MFH00004	1	3/8FNPT QUICK DISCONNECT NIPPLE
29	MFI00085	1	1-1/2NPT XHS CLOSE NIPPLE
30	MFK00002	1	FILLER CAP
31	MJQ00344	1	OIL COOLER
32	2412701	1	MANIFOLD WELDMENT
33	2412801	1	HIGH PRESSURE MANIFOLD
34	2424601	1	#1648 FIXED JAW STACK ASSEMBLY
35	2424602	1	#1648 MOVEABLE JAW STACK ASSEMBLY
36	3600501	1	CARRIAGE MANIFOLD ASSEMBLY
37	3601401	1	EXTERNAL AUXILARY EQUIPMENT MANIFOLD
38	816322	1	INDEX HEATER & FACER LABEL
39	MDJ00031	1	1-3/8B x 5/16" KEY COUPLING
40	MDJ00032	1	7/8B x 1/ 4" KEY COUPLING

**#1648 HYDRAULIC SCHEMATIC**Parts List

ITEM	PART NO.	QTY.	DESCRIPTION
41	MDJ00033	1	COUPLING INSERT
42	MAC00141	4	1/2-13NC x 1-1/2 LG SHCS
43	MBE00021	4	1/2 INTERNAL TOOTH LOCK WASHER
44	MEA00045	1	PUMP ADAPTER
45	MAC00083	2	5/16-18NC x 3" LG SHCS
46	MBE00022	2	5/16 HI-COLLAR SPLIT LOCK WASHER SS

**NOTES:**

1. ITEM #44 PUMP ADAPTER INCLUDES 1/2-13NC x 1-1/2 LG BOLTS TO MOUNT TO VANE PUMP.
2. IF MACHINE WAS PRODUCED PRIOR TO JAN 05 ORDER A4830801 TO REPLACE HYDRAULIC COOLER.

## DRAWING REVISION HISTORY LISTING

**PART NO:** 4800601  
**DESCRIPTION:** #1648 HYDRAULIC SCHEMATIC

<u>APPR.</u>	<u>REV</u>	<u>DATE</u>	<u>BY</u>	<u>DESCRIPTION OF REVISION</u>
SWB	F	07/05/95	TLW	IGES FROM BRAVO TO AUTOCAD. REDUCED TO 'A' SIZE FORMAT. CREATED TYPED PARTS LIST
SWB	G	03/08/97	AH	REMOVED ITEM #19 MEK00018, BECAUSE IT IS ALREADY CALLED OUT ON MAIN ASSEMBLY.
TLW	H	04/01/99	RLE	REVISED & REDRAWN. REMOVED ITEMS THAT MAKE UP FIXED & MOVEABLE JAW STACK ASSEMBLIES. SEE 2424601, #1648 FIXED JAW STACK ASSEMBLY, & 2424602, #1648 MOVEABLE JAW STACK ASSEMBLY, FOR THESE ITEMS. MOVED 4826701, CARRIAGE HOSE TROUGH, TO DRWG. 4800501, OUTER MOVABLE JAW ASSY., QTY. (1) & 4800502, INNER MOVABLE JAW ASSY., QTY. (1), MOVED 4826801, REAR PIPE LIFT CLIP, TO 4829101, ROLLING CHASSIS ASSY., QTY. (1) & MOVED 4826901, CYL. HOSE CLIP, TO 4829101, ROLLING CHASSIS ASSY., QTY. (1). UPDATED TO MODULARIZE ASSEMBLIES.
SWB	J	06/07/99	MLM	REVISED CARRIAGE MANIFOLD ASSEMBLY TO CLOSER REPRESENT PHYSICAL LAYOUT, FOR CLARIFICATION. CORRECTED BALL VALVE LOCATION FROM FIXED JAW CLAMP CYLINDERS TO FIXED JAW PIVOT CYLINDERS AS BUILT.
SWB	K	12/21/99	TLW	ADDED ITEMS #39 MDJ00031 QTY. 1, ITEM #40 MDJ00032 QTY. 1, ITEM #41 MDJ00033 QTY. 1, ITEM #42 MAC00141 QTY. 4, ITEM #43 MBE00021 QTY.4, AND ITEM #44 MEA00045 QTY.1 TO COMPLY WITH MOTOR CHANGE FROM MDB00051 AND MDB00005 TO UNIVERSAL MOTOR MDB00060.
SWB	L	07/25/02	BWW	REMOVED ITEM 24 MFC00071. ITEM IS CALLED OUT ON THE PLUMBING SCHEMATIC.
LAA	M	03/18/03	ALK	REMOVED ITEM-12 MEB00033. REVISED ITEM-9 FROM MEB00030 TO MEB00118, ITEM-10 FROM MEB00031 TO MEB00119, ITEM-13 FROM MEB00043 TO MEB00122, & ITEM-11 FROM MEB00032 TO MEB00120 CHANGED QTY. OF ITEM-11 FROM 1 TO 2. CHANGES MADE TO REPLACE MILWAUKEE CYLINDERS WITH CARLSON CYLINDERS.
SWB	N	05/17/05	JAB	REVISED ITEM 31 FROM MJQ00058 TO MJQ00344 DUE TO AVAILABILITY. ADDED NOTE 2 FOR REPLACEMENT OF HYDRAULIC COOLER.
SWB	P	11/1/06	PSP	CORRECTED BY ADDING ITEMS 45 (MAC00083) AND 46 (MBE00022) FOR MOUNTING ITEM 37 (3601401).