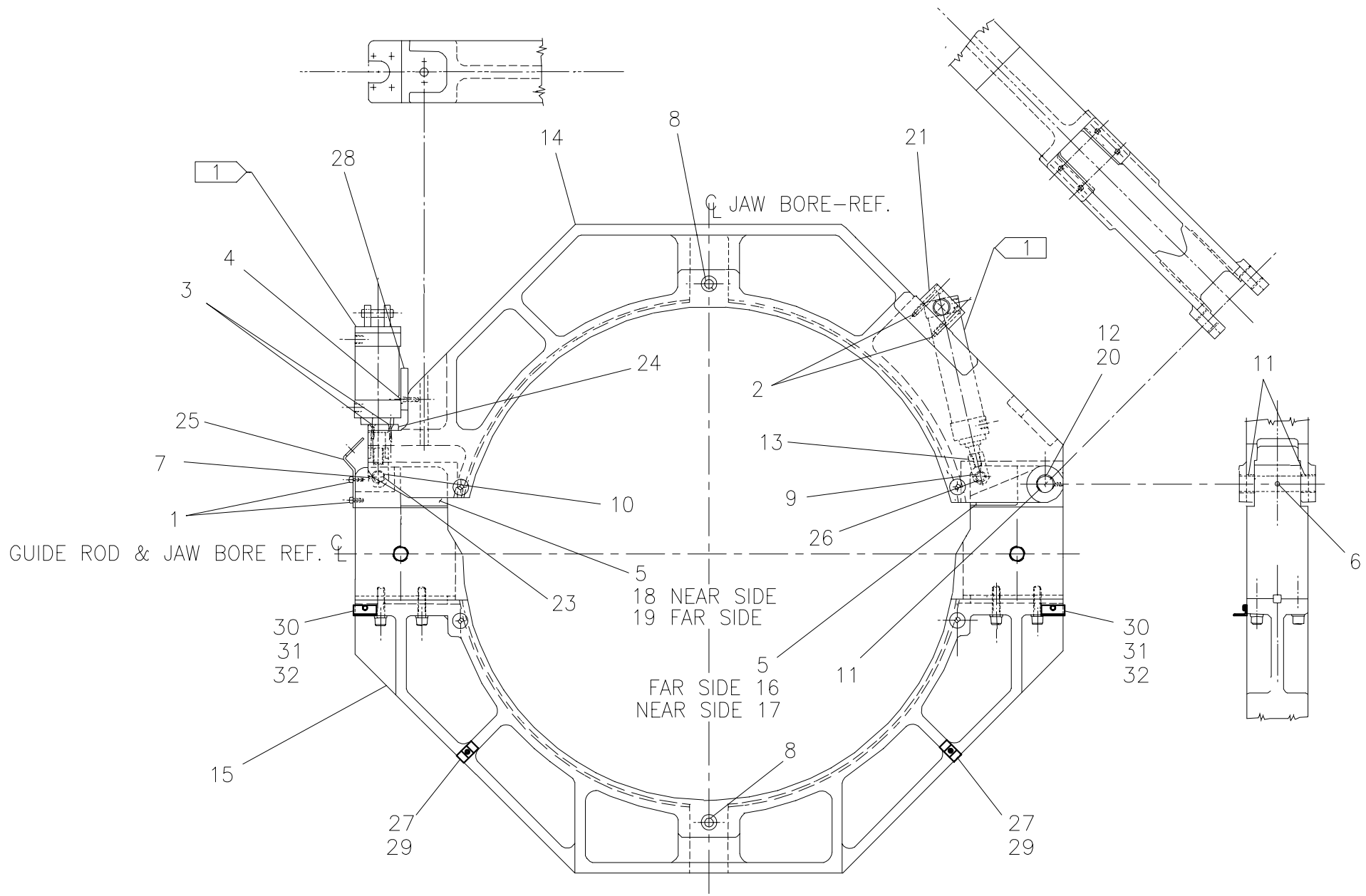




**McElroy Manufacturing, Inc.**  
 The leader by design.  
 Tulsa, Oklahoma U.S.A.

DRAWN: TLW	CHECK: BWP	APPRV'D: B	DATE: 6/12/95	DWG No.: 4800500	SHT No.: 4	REV No.: F	PART No.: 4800504
#1648 OUTER FIXED JAW ASSEMBLY							CAD No.: 4800504

NOTE: THIS DRAWING AND THE INFORMATION CONTAINED THEREIN IS THE CONFIDENTIAL AND PROPRIETARY PROPERTY OF McElroy Manufacturing, Inc. THE DRAWING IS NOT TO BE REPRODUCED IN ANY MANNER, SUBMITTED OUTSIDE PARTIES FOR EXAMINATION, OR USED DIRECTLY OR INDIRECTLY FOR THE PURPOSES OTHER THAN THOSE FOR WHICH IT WAS FURNISHED WITHOUT WRITTEN PERMISSION OF McElroy Manufacturing, Inc.



## #1648A OUTER FIXED JAW ASSEMBLY

PARTS LIST

ITEM	PART NO.	QTY	DESCRIPTION
	<b>4800504</b>		<b>Assembly</b>
1	MAC00094	4	3/8-16NC X 1"LG SHCS
2	MAC00145	4	1/2-13NC X 2-1/2"LG SHCS
3	MAD00060	4	5/16-18NC X 1-1/4"LG FHSCS
4	MAD00075	2	3/8-16NC X 1-1/2"LG FHSCS
5	MAD00173	16	10-32NF X 3/4"LG FHSCS
6	MAH00053	1	1/4-20NC X 1"LG SOCKET SET SCREW
7	MAH00054	1	1/4-20NC X 1/2"LG SOCKET SET SCREW
8	MCE00020	2	3/4"DIA X 6.00" GRIP DETENT PIN
9	MDM00011	2	BUSHING
10	MDM00092	2	BUSHING
11	MDM00185	2	BUSHING
12	MFJ00001	2	GREASE ZERK
13	1237301	1	FEMALE ROD EYE
14	4801002	1	UPPER JAW
15	4801107	1	LOWER OUTER FIXED JAW CAP ASSEMBLY
16	4802401	1	JAW WEAR BLOCK
17	4802402	1	JAW WEAR BLOCK
18	4802403	1	JAW WEAR BLOCK
19	4802404	1	JAW WEAR BLOCK
20	4802501	1	UPPER JAW PIVOT PIN
21	4802701	2	TRUNNION BLOCK ASSEMBLY
22			
23	4802901	1	CLAMP CYLINDER PIVOT PIN
24	4803001	1	CLAMP CYLINDER PAD
25	4803301	1	CLAMP CYLINDER SUPPORT
26	4804701	1	JAW OPENING CYLINDER PIVOT PIN
27	MAH00050	2	1/4-20NC X 1/2 LG. SHCS SS
28	4816801	1	JAW CLAMP CYLINDER ALIGNMENT PLATE
29	MHA00033	2	1/2" HOSE CLAMP
30	3613503	2	1/2NPTF BULKHEAD FITTING ANGLE CLIP
31	MAB00002	2	1/4-20NC x 1/2 LG. HHCS
32	MBE00005	2	1/4" LOCK WASHER

**NOTES:**

1. Hydraulic Cylinder - Ref. see Plumbing Diagram for callout and/or description.

## DRAWING REVISION HISTORY LISTING

**PART NO:** 4800504

**DESCRIPTION:** #1648A OUTER FIXED JAW ASSEMBLY

<u>APPR.</u>	<u>REV</u>	<u>DATE</u>	<u>BY</u>	<u>DESCRIPTION OF REVISION</u>
B	A	4/30/96	TLW	DELETED ITEM #4, #7(MJC00004), #8(MAC00079), #15(MAC00070), #17 (MAH00016) & #35(4803101) ALONG WITH NOTE 2. ALTER-TURN THREADED END TO 5/8 DIA. X 1/8" LENGTH TO REMOVE THREADS. PARTS AND NOTE WAS NOT REQUIRED FOR OUTER JAW.
SWB	B	11/14/96	SS	REMOVE ITEMS #1 (MAC00188), #2 (MBE00012), #3 (3/4" SQ. x 9" LG. KEY STOCK), #43 (4801502) AND #47 (4801302) & MOVED ALL TO 4801107. REPLACE 4801105 (LOWER JAW-FIXED) WITH 4801107 (LOWER OUTER FIXED JAW CAP ASSEMBLY).
SWB	C	7/14/97	BB	DELETED ITEM NO. 27 4812701 SPACER NUT FOR JAW PIVOT CYL. CAN NOT BOTTOM OUT JAW ON CLAMP SIDE WITH MILWAUKEE CYLINDERS.
SWB	-	8/12/97	BB	CORRECTED ITEM #14 FROM 4801003 INNER FIXED UPPER JAW TO 4801002 UPPER JAW.
SWB	-	1/28/98	DJL	REMOVED DIMENSIONS FROM FIELD OF DRAWING.
TLW	D	04/12/99	RLE	ADDED ITEMS #29, 3613501 QTY. (2), #30, 3613503 QTY. (2), #31, MAB00002 QTY. (4) & #32, MBE00005 QTY. (4). UPDATED TO MODULARIZE ASSEMBLIES.
SWB	E	07/25/02	BWW	REVISED TO ADD ITEM 27 MAH00050 QTY 2 AND CHANGED ITEM 29 FROM 3613501 TO MHA00033 QTY 2. CHANGED QTY OF ITEM 31 MAB00002 FROM 4 TO 2 AND ITEM 32 MBE00005 FROM 4 TO 2. CHANGES MADE TO MATCH AS BUILT CONDITION.
SWB	F	04/29/05	JAB	REVISED DRAWING TO REMOVE 4802801 (ITEM #22) WHICH IS NOW FURNISHED WELDED TO THE CYLINDER SHAFT.