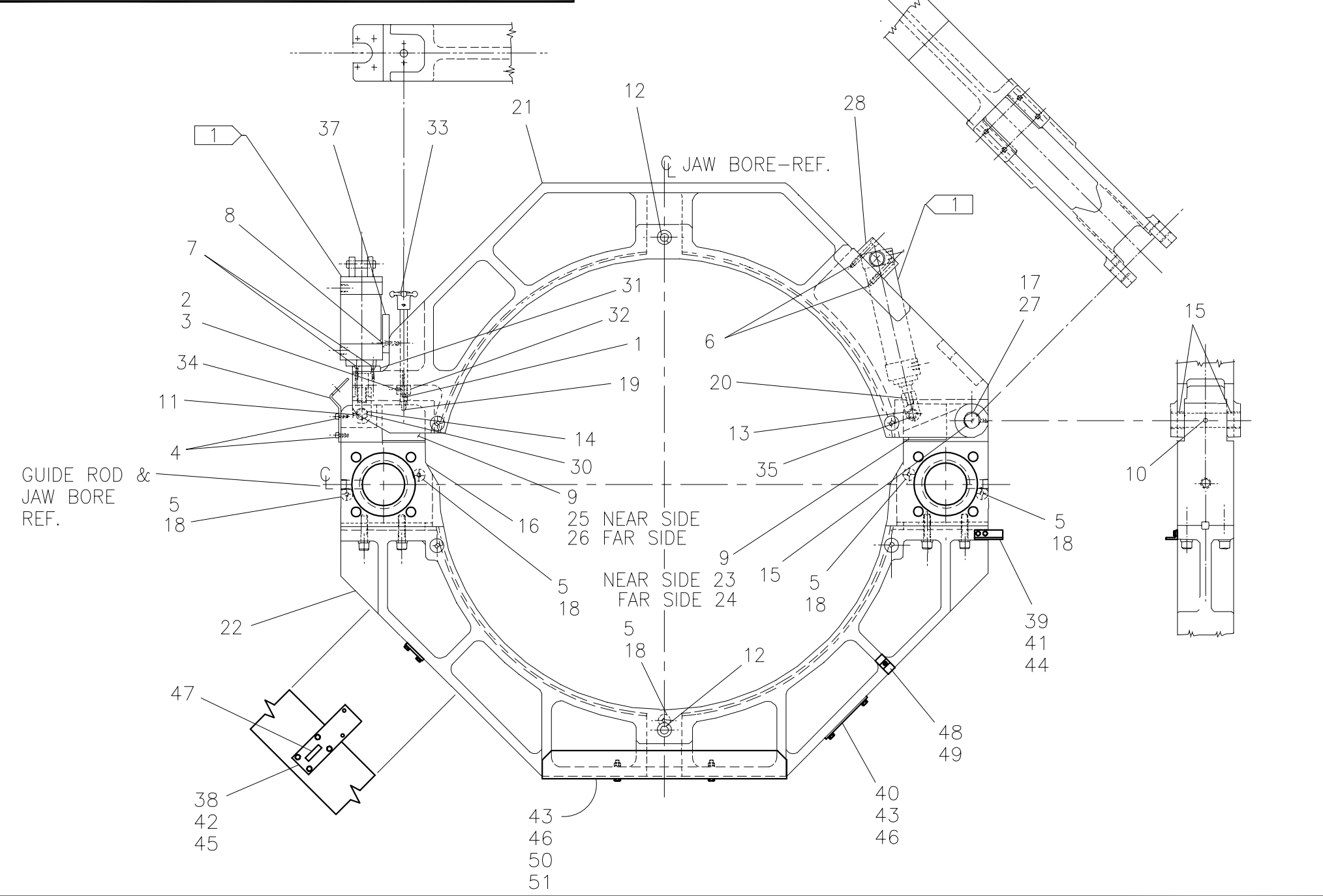




McElroy Manufacturing, Inc.
 The leader by design.
 Tulsa, Oklahoma U.S.A.

DRAWN: TLW	CHECK: BWP	APPRV'D: B	DATE: 6/12/95	DWG No: 4800500	SHT No: 2	REV No: E	PART No: 4800502
#1648 INNER MOVEABLE JAW ASSEMBLY							CAD No: 4800502

NOTE: THIS DRAWING AND THE INFORMATION CONTAINED THEREIN IS THE CONFIDENTIAL AND PROPRIETARY PROPERTY OF McElroy Manufacturing, Inc. THE DRAWING IS NOT TO BE REPRODUCED IN ANY MANNER, SUBMITTED OUTSIDE PARTIES FOR EXAMINATION, OR USED DIRECTLY OR INDIRECTLY FOR THE PURPOSES OTHER THAN THOSE FOR WHICH IT WAS FURNISHED WITHOUT WRITTEN PERMISSION OF McElroy Manufacturing, Inc.



#1648A INNER MOVEABLE JAW ASSEMBLY

PARTS LIST

ITEM	PART NO.	QTY	DESCRIPTION
	4800502		Assembly
1	MAC00079	2	5/16-18NC X 2"LG SHCS
2	MAG00024	1	5/16-18NC X 3/8"LG SHSS
3		1	.25 DIA. X 1/8" LG. NYLON SLUG
4	MAC00094	4	3/8-16NC X 1"LG SHCS
5	MAC00099	5	3/8-16NC X 2-1/4"LG SHCS
6	MAC00145	4	1/2-13NC X 2-1/2"LG SHCS
7	MAD00060	4	5/16-18NC X 1-1/4"LG FHSCS
8	MAD00075	2	3/8-16NC X 1-1/2"LG FHSCS
9	MAD00173	16	10-32NF X 3/4"LG FHSCS
10	MAH00053	1	1/4-20NC X 1"LG SOCKET SET SCREW
11	MAH00054	1	1/4-20NC X 1/2"LG SOCKET SET SCREW
12	MCE00020	2	3/4"DIA X 6.00" GRIP DETENT PIN
13	MDM00011	2	BUSHING
14	MDM00092	2	BUSHING
15	MDM00185	2	BUSHING
16	MFA00002	2	2MPT PLUG
17	MFJ00001	2	GREASE ZERK
18	MJC00002	5	REST BUTTON
19	MJC00004	1	REST BUTTON
20	1237301	1	FEMALE ROD EYE
21	4801002	1	UPPER JAW
22	4801109	1	LOWER INNER MOVEABLE JAW CAP ASSEMBLY
23	4802401	1	JAW WEAR BLOCK
24	4802402	1	JAW WEAR BLOCK
25	4802403	1	JAW WEAR BLOCK
26	4802404	1	JAW WEAR BLOCK
27	4802501	1	UPPER JAW PIVOT PIN
28	4802701	2	TRUNNION BLOCK ASSEMBLY
29			
30	4802901	1	CLAMP CYLINDER PIVOT PIN
31	4803001	1	CLAMP CYLINDER PAD
32	4803101	1	UPPER JAW ADJUSTMENT SCREW BLOCK
33	4803201	1	JAW SCREW & CLAMP ADJUSTMENT
34	4803301	1	CLAMP CYLINDER SUPPORT
35	4804701	1	JAW OPENING CYLINDER PIVOT PIN

#1648A INNER MOVEABLE JAW ASSEMBLY

PARTS LIST (Continued)

ITEM	PART NO.	QTY	DESCRIPTION
36			
37	4816801	1	JAW CLAMP CYLINDER ALIGNMENT PLATE
38	4815201	1	MANIFOLD MOUNTING PLATE
39	4818102	1	INNER MOVABLE JAW BULKHEAD CLIP
40	4818201	1	INNER MOVABLE JAW BULKHEAD CLIP
41	MAB00004	2	1/4-20NC x 3/4 LG. HHCS
42	MAB00036	4	5/16-18NC x 1-3/4 LG. HHCS
43	MAB00068	4	3/8-16NC x 2" LG. HHCS
44	MBE00005	3	1/4" LOCK WASHER
45	MBE00006	4	5/16" LOCK WASHER
46	MBE00007	4	3/8" LOCK WASHER
47	3608307	1	FACER LABEL
48	MHA00033	1	1/2 HOSE CLAMP
49	MAH00050	1	1/4-20NC x 1/2 LG. SHCS SS
50	4826701	1	CARRIAGE HOSE TROUGH
51	MBA00007	2	3/8-16NC HEX NUT

NOTES:

1. HYDRAULIC CYLINDER - REF. SEE PLUMBING DIAGRAM FOR CALLOUT AND/OR DESCRIPTION.

DRAWING REVISION HISTORY LISTING

PART NO: 4800502
DESCRIPTION: #1648A INNER MOVEABLE JAW ASSEMBLY

<u>APPR.</u>	<u>REV</u>	<u>DATE</u>	<u>BY</u>	<u>DESCRIPTION OF REVISION</u>
SWB	A	11/13/96	SS	REMOVE ITEMS #1 (MAC00188), #2 (MBE00012), #3 (3/4" SQ. x 9" LG. KEY STOCK), #45 (4801402) AND #49 (4801202) & MOVED ALL TO 4801109. REPLACE 4801104 (LOWER JAW-MOVEABLE) WITH 4801109 (LOWER INNER MOVEABLE JAW CAP ASSEMBLY).
SWB	B	07/14/97	BB	DELETED ITEM NO. 36 4812701 SPACER NUT FOR JAW PIVOT CYL. CAN NOT BOTTOM OUT JAW ON CLAMP SIDE WITH MILWAUKEE CYLINDERS.
SWB	-	08/20/97	BB	CORRECTED ITEM #2 MAC00092 3/8-16NC X 3/4" LG SHCS TO MAG00024 5/16-18NC X 3/8" LG SHSS.
SWB	-	01/05/98	DJL	REMOVED DIMENSIONS FROM FIELD OF DRAWING.
TLW	C	03/31/99	RLE	ADDED ITEMS #38, 4815201 QTY. (1), #39, 4818101 QTY. (1), #40, 4818201 QTY. (1), #41, MAB00004 QTY. (2), #42, MAB00036 QTY. (4), #43, MAB00068 QTY. (4), #44, MBE00005 QTY. (3), #45, MBE00006 QTY. (4), #46, MBE00007 QTY (4), #47, 3608307 QTY. (1), #48, 3613501 QTY. (1), #49, MAB00002 QTY.(1), #50, 4826701 QTY. (1), #51, MBA00007 QTY. (2). UPDATED TO MODULARIZE ASSEMBLIES.
TLW	-	08/29/00	PB	CORRECTED ITEM #39 FROM 4818101 QTY. (1) TO 4818102 QTY. (1). WRONG PART No. ON PARTS LIST & AS400.
SWB	D	07/25/02	BWW	REVISED ITEM 48 FROM 3613501 TO MHA00033 QTY 1 AND ITEM 49 FROM MAB00002 TO MAH00050 QTY 1. CHANGE MADE TO MATCH AS BUILT CONDITION.
SWB	E	04/29/05	JAB	REVISED DRAWING TO REMOVE 4802801 (ITEM #29) WHICH IS NOW FURNISHED WELDED TO THE CYLINDER SHAFT.