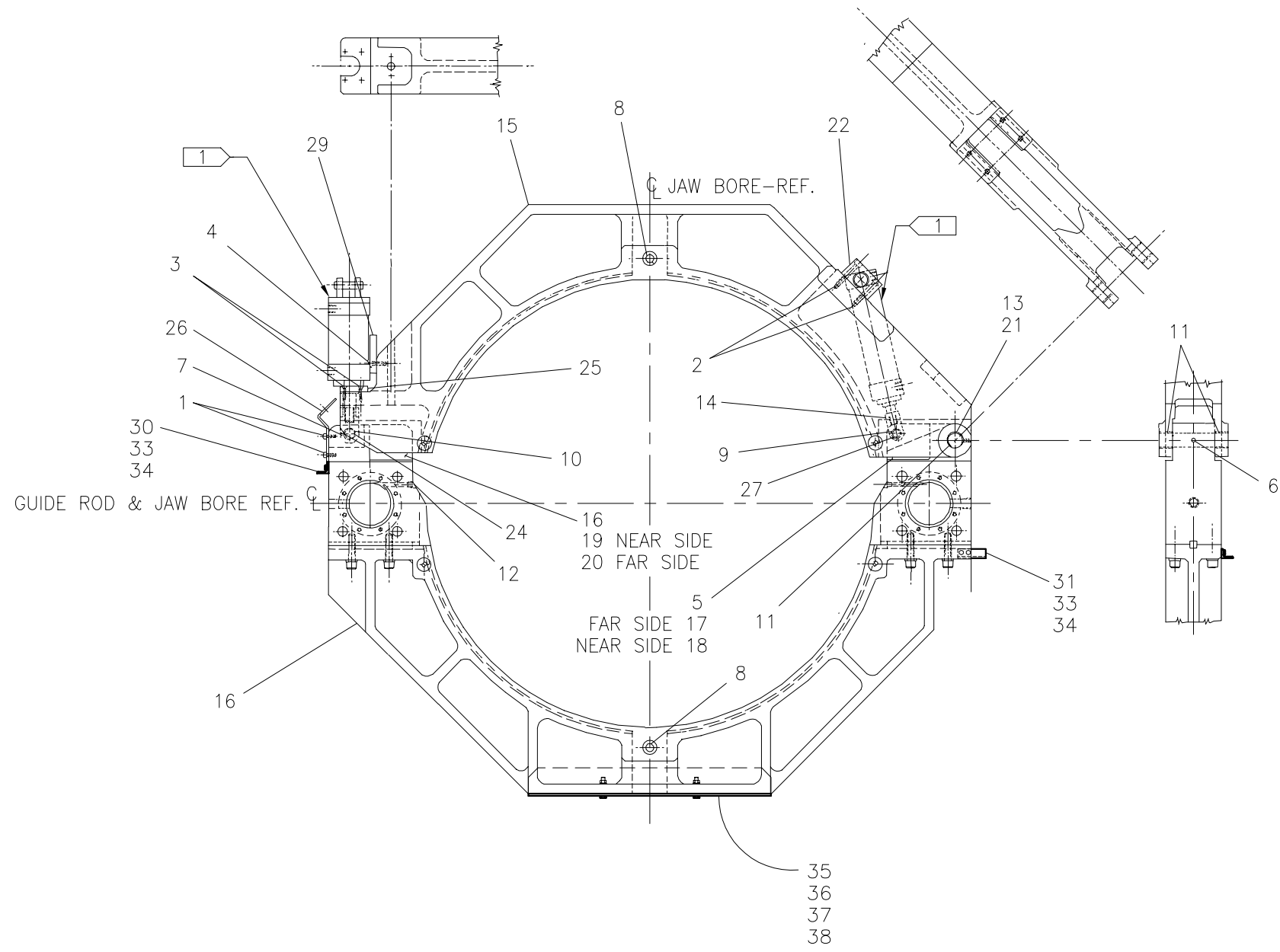




McElroy Manufacturing, Inc.
 The leader by design.
 Tulsa, Oklahoma U.S.A.

DRAWN: TLW	CHECK: BWP	APPRV'D: B	DATE: 6/12/95	DWG No: 4800500	SHT No: 1	REV No: P	PART No: 4800501
#1648A OUTER MOVEABLE JAW ASSEMBLY							CAD No: 4800501

NOTE: THIS DRAWING AND THE INFORMATION CONTAINED THEREIN IS THE CONFIDENTIAL AND PROPRIETARY PROPERTY OF McElroy Manufacturing, Inc. THE DRAWING IS NOT TO BE REPRODUCED IN ANY MANNER, SUBMITTED OUTSIDE PARTIES FOR EXAMINATION, OR USED DIRECTLY OR INDIRECTLY FOR THE PURPOSES OTHER THAN THOSE FOR WHICH IT WAS FURNISHED WITHOUT WRITTEN PERMISSION OF McElroy Manufacturing, Inc.



#1648A OUTER MOVEABLE JAW ASSEMBLYPARTS LIST

ITEM	PART NO.	QTY	DESCRIPTION
	4800501		Assembly
1	MAC00094	4	3/8-16NC x 1" LG SHCS STL BL.
2	MAC00145	4	1/2-13NC x 2-1/2 LG SHCS STL BL.
3	MAD00060	4	5/16-18NC x 1-1/4 LG FHSCS STL
4	MAD00075	2	3/8-16NC x 1-1/2 LG FHSCS STL
5	MAD00173	16	10-32NF x 3/4 LG FHSCS STL BL
6	MAH00053	1	1/4-20NC x 1" LG CONE PT SKT SET SCR.
7	MAH00054	1	1/4-20NC x 1/2 LG CONE PT SKT
8	MCE00020	2	3/4" DIA x 6.00 GRIP DETENT PIN
9	MDM00011	2	BUSHING
10	MDM00092	2	BUSHING
11	MDM00185	2	BUSHING
12	MFA00002	2	2MPT PLUG
13	MFJ00001	2	GREASE ZERK
14	1237301	1	FEMALE ROD EYE
15	4801002	1	UPPER JAW
16	4801110	1	LOWER OUTER MOVEABLE JAW CAP ASSEMBLY
17	4802401	1	WEAR BLOCK-JAW
18	4802402	1	WEAR BLOCK-JAW
19	4802403	1	WEAR BLOCK;BRASS-JAW
20	4802404	1	WEAR BLOCK;BRASS-JAW
21	4802501	1	PIVOT PIN-UPPER JAW
22	4802701	2	TRUNNION FITTING-UPPER JAW
23			
24	4802901	1	PIVOT PIN/CLAMP CYLINDER-JAW
25	4803001	1	PAD/CLAMP CYLINDER-JAW
26	4803301	1	SUPPORT/CLAMP CYLINDER-JAW
27	4804701	1	PIVOT PIN/OPENING CYLINDER-JAW
28			
29	4816801	1	ALIGNMENT PLATE/CLAMP CYLINDER-JAW
30	4818001	1	OUTER MOVABLE JAW BULKHEAD CLIP
31	4818101	1	OUTER MOVABLE JAW BULKHEAD CLIP
32			
33	MAB00004	4	1/4-20NC x 3/4 LG HHCS
34	MBE00005	4	1/4" LOCK WASHER
35	4826701	1	CARRIAGE HOSE TROUGH
36	MAB00068	2	3/8-16NC x 2" LG. HHCS
37	MBA00007	2	3/8-16NC HEX NUT
38	MBE00007	2	3/8" LOCK WASHER

#1648A OUTER MOVEABLE JAW ASSEMBLY

PARTS LIST

ITEM	PART NO.	QTY	DESCRIPTION
------	----------	-----	-------------

NOTES:

1. Hydraulic Cylinder - Ref. see Plumbing Diagram for callout and/or description.

DRAWING REVISION HISTORY LISTING

PART NO: 4800501
DESCRIPTION: #1648A OUTER MOVEABLE JAW ASSEMBLY

<u>APPR.</u>	<u>REV</u>	<u>DATE</u>	<u>BY</u>	<u>DESCRIPTION OF REVISION</u>
B	H	06/12/95	TLW	SCANNED & REDUCED TO 'A' SIZE FORMAT. MOVED 4800502,503 & 504 TO SHEETS 2,3 & 4. CREATED TYPED PARTS LIST.
B	J	04/30/96	TLW	DELETED ITEM #4, #7(MJC00004), #8(MAC00079), #15(MAC00070), #17(MAH00016) & #35(4803101) ALONG WITH NOTE 2. ALTER-TURN THREADED END TO 5/8 DIA. X 1/8" LENGTH TO REMOVE THREADS. PARTS AND NOTE WAS NOT REQUIRED FOR OUTER JAW.
SWB	K	11/13/96	SS	REMOVE ITEMS #1 (MAC00188), #2 (MBE00012), #3 (3/4" SQ. x STOCK), #46 (4801401) AND #50 (4801201) & MOVED ALL TO 4801110.REPLACE 4801106 (LOWER JAW-MOVEABLE) WITH 4801110 (LOWER OUTER MOVEABLE JAW CAP ASSEMBLY).
SWB	L	07/14/97	BB	DELETED ITEM NO. 28 4812701 SPACER NUT FOR JAW PIVOT CYL.CAN NOT BOTTOM OUT JAW ON CLAMP SIDE WITH MILWAUKEE CYLINDERS.
SWB	-	01/27/98	DJL	REMOVED DIMENSIONS FROM FIELD OF DRAWING.
TLW	M	03/31/99	RLE	ADDED ITEMS #30, 4818001 QTY (1), #31, 4818102 QTY. (1), #32, 3613401 QTY. (1), #33, MAB00004 QTY. (6), #34, MBE00005 QTY.(6), #35, 4826701 QTY. (1), #36, MAB00068 QTY.(2), #37, MBA00007 QTY. (2) & #38, MBE00007 QTY. (2). UPDATED TO MODULARIZE ASSEMBLIES.
TLW	-	08/29/00	PB	CORRECTED ITEM #31 FROM 4818102 QTY.(1) TO 4818101 QTY. (1). WRONG PART No. ON PARTS LIST & AS400.
SWB	N	04/29/05	JAB	REVISED DRAWING TO REMOVE 4802801 (ITEM #23) WHICH IS NOW FURNISHED WELDED TO THE CYLINDER SHAFT.
SWB	P	10/31/06	PSP	REVISED TO DELETE ITEM 32 (3613401) AND CHANGE QTY OF ITEMS 33 (MAB00004) AND 34 (MBE00005) FROM 6 TO 4 DUE TO CHANGE IN ASSEMBLY PROCEDURE.