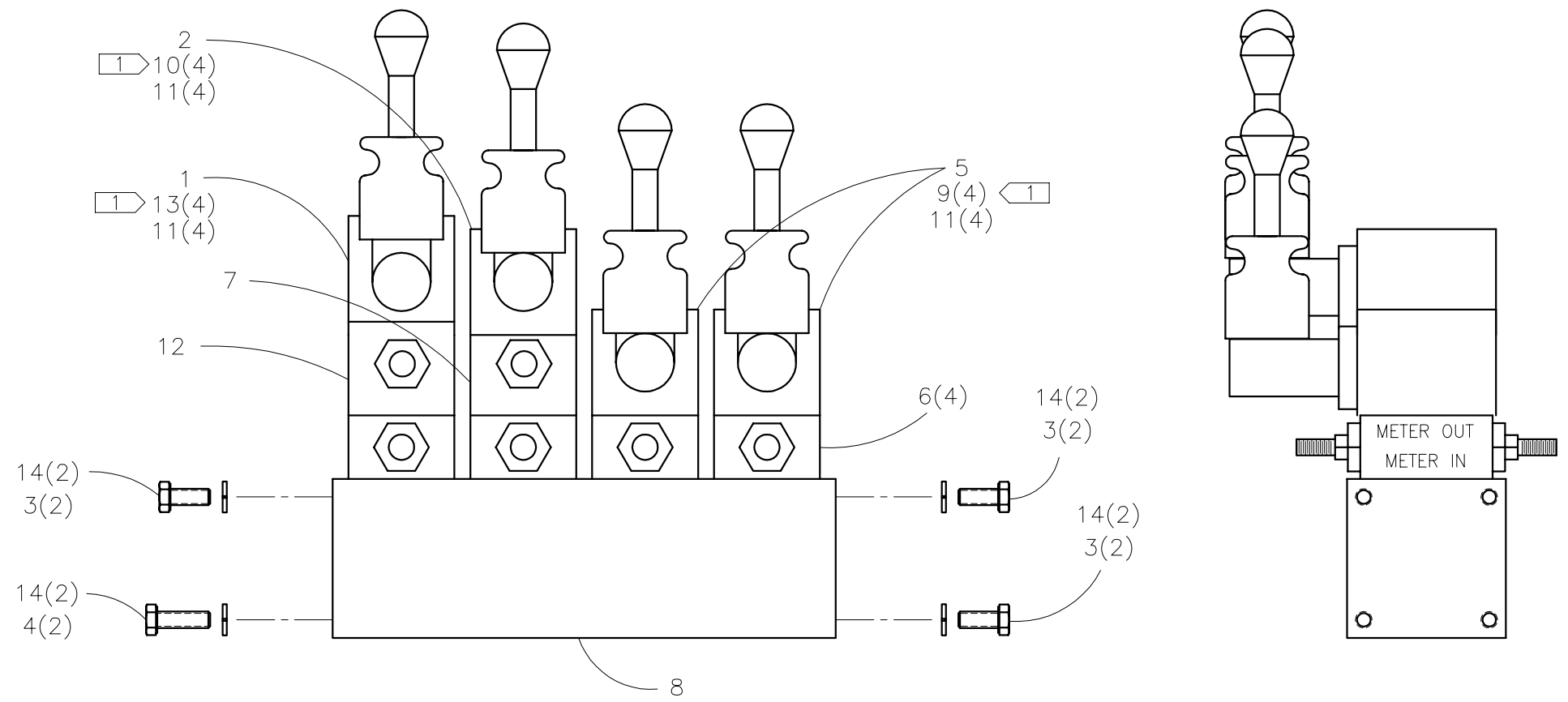
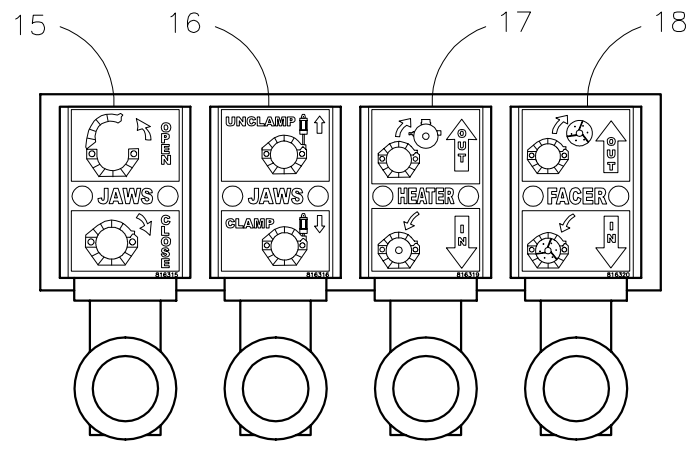




**McElroy Manufacturing, Inc.**  
 The leader by design.  
 Tulsa, Oklahoma U.S.A.

DRAWN: RLE	CHECK: TLW	APPRV'D: SWB	DATE: 04/01/99	DWG No: 2424600	SHT No: 2	REV No: C	PART No: 2424602
#1648/#2065 MOVABLE JAW STACK ASSEMBLY							CAD No: 2424602

NOTE: THIS DRAWING AND THE INFORMATION CONTAINED THEREIN IS THE CONFIDENTIAL AND PROPRIETARY PROPERTY OF McElroy Manufacturing, Inc. THE DRAWING IS NOT TO BE REPRODUCED IN ANY MANNER, SUBMITTED TO OUTSIDE PARTIES FOR EXAMINATION, OR USED DIRECTLY OR INDIRECTLY FOR THE PURPOSES OTHER THAN THOSE FOR WHICH IT WAS FURNISHED WITHOUT WRITTEN PERMISSION OF McElroy Manufacturing, Inc.



**#1648/#2065 MOVABLE JAW STACK ASSEMBLY**Parts List

ITEM	PART NO.	QTY.	DESCRIPTION
	<b>2424602</b>	<b>1</b>	<b>ASSEMBLY</b>
1	MEF00016	1	DIRECTIONAL VALVE
2	MEF00017	1	DIRECTIONAL VALVE
3	MAB00032	6	5/16-18NC x 3/4 LG. HHCS
4	MAB00033	2	5/16-18NC x 1" LG. HHCS
5	MEF00018	2	DIRECTIONAL VALVE
6	MEJ00001	4	FLOW CONTROL VALVE
7	MEJ00002	1	CHECK VALVE
8	MEL00002	1	MANIFOLD
9	MAC00045	8	#10-24NC x 2-1/2 LG. SHCS
10			
11	MBE00004	16	#10 LOCK WASHER
12	MEH00005	1	RELIEF VALVE
13	MAC00049	8	#10-24NC x 4-1/4 LG. SHCS
14	MBE00006	8	5/16" LOCK WASHER
15	816315	1	JAWS OPEN/CLOSE LABEL
16	816316	1	JAWS CLAMP/UNCLAMP
17	816319	1	HEATER IN/OUT LABEL
18	816320	1	FACER IN/OUT LABEL

**NOTES:**

1. TORQUE TO 4-5 FT-LBS (48-60 IN-LBS).
2. USE #MDL00093 FOR REPLACEMENT O-RING NUMBERS FOR ITEMS: 1,2,5,6,7 & 12. QUANTITY OF (4) FOR EACH ITEM.
3. THIS ASSEMBLY ALSO USED FOR SERVICE PART ON #824 UNITS PREVIOUS TO S/N 345120 & ON #1236 UNITS PREVIOUS TO S/N 331820.

## DRAWING REVISION HISTORY LISTING

**PART NO:** 2424602  
**DESCRIPTION:** #1648/#2065 MOVEABLE JAW STACK ASSEMBLY

<u>APPR.</u>	<u>REV</u>	<u>DATE</u>	<u>BY</u>	<u>DESCRIPTION OF REVISION</u>
TLW	A	04/01/99	RLE	REVISED & REDRAWN FOR #1648 FUSION UNIT. ADDED ITEM #3, MAB00032 QTY. (6), ITEM #4, MAB00033 QTY. (2), ITEM #14, MBE00006 QTY. (8), ITEM #15, 816315 QTY. (1), ITEM #16, 816316 QTY. (1), ITEM #17, 816319 QTY. (1), ITEM #18, 816320 QTY. (1) & ADDED NOTE #2.
SWB	B	06/06/05	JAB	CORRECTED DRAWING & MOUNTING HARDWARE OF ITEM #12 RELIEF VALVE TO MATCH AS BUILT. ADDED QTY TO ALL ITEMS FOR CLARITY.
SPA	C	12/19/05	JAB	REMOVED ITEM 10 (MAC00048) AND CHANGED QTY OF ITEM 13 (MAC00049) FROM 4 TO 8. CHANGES MADE FOR ALLOW MORE THREAD ENGAGEMENT INTO MANIFOLD AND EASE ASSEMBLY PROCESS. ALSO, ADDED NOTE 1 TO ENSURE PROPER TORQUE ON MOUNTING BOLTS.