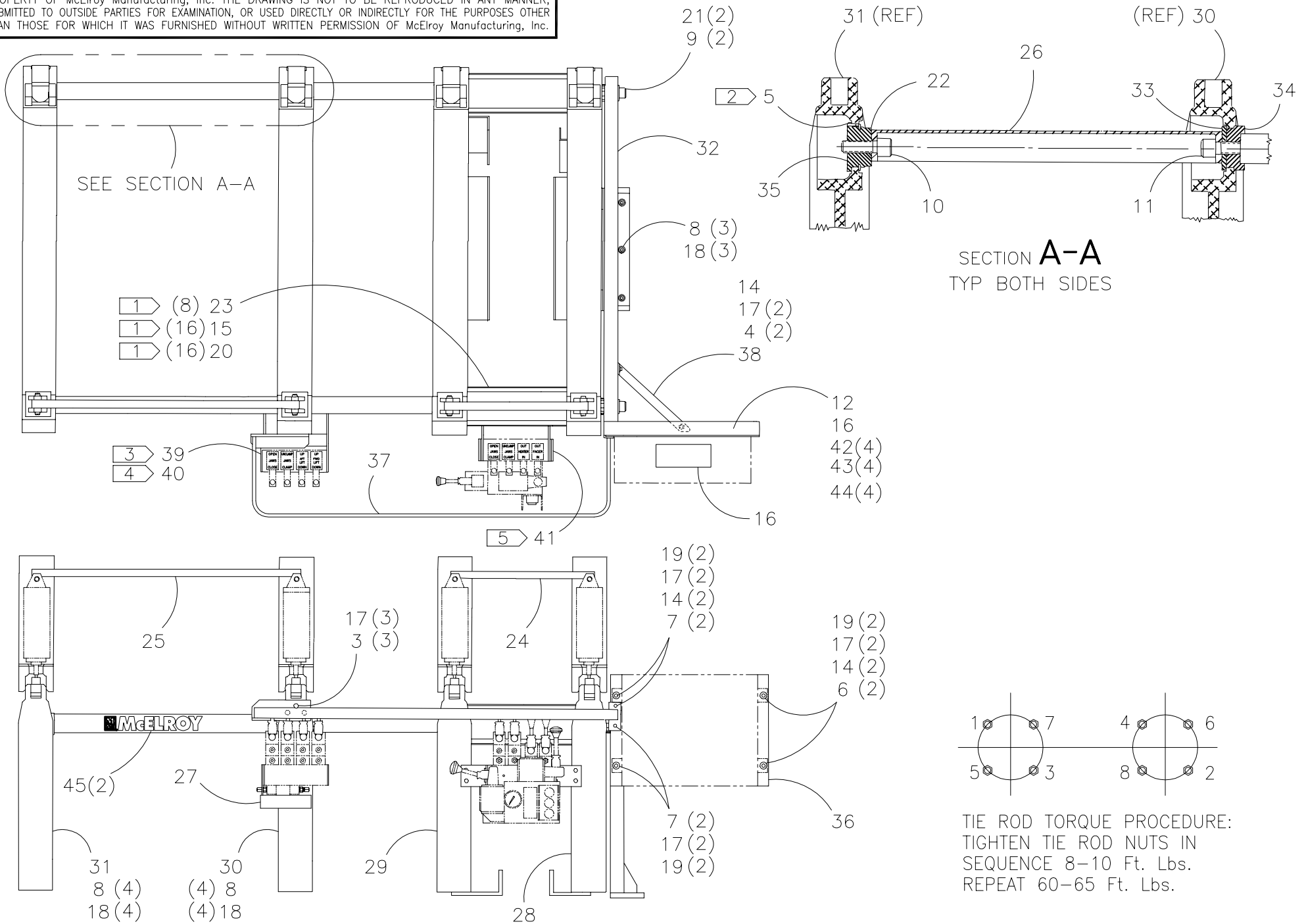




**McElroy Manufacturing, Inc.**  
 The leader by design.  
 Tulsa, Oklahoma U.S.A.

DRAWN: TGW	CHECK: TLW	APPRVD: SWB	DATE: 10/19/98	DWG No: 3631400	SHT No: 1	REV No: C	PART No: 3631401
#1236A JAW SET ASSEMBLY							CAD No: 3631401

NOTE: THIS DRAWING AND THE INFORMATION CONTAINED THEREIN IS THE CONFIDENTIAL AND PROPRIETARY PROPERTY OF McElroy Manufacturing, Inc. THE DRAWING IS NOT TO BE REPRODUCED IN ANY MANNER, SUBMITTED TO OUTSIDE PARTIES FOR EXAMINATION, OR USED DIRECTLY OR INDIRECTLY FOR THE PURPOSES OTHER THAN THOSE FOR WHICH IT WAS FURNISHED WITHOUT WRITTEN PERMISSION OF McElroy Manufacturing, Inc.



**#1236A JAW SET ASSEMBLY**PARTS LIST

ITEM	PART NO.	QTY	DESCRIPTION
	<b>3631401</b>		<b>ASSEMBLY</b>
1			
2			
3	MAA00063	3	3/8-16NC x 3/4" LG. HHCS
4	MAA00064	2	3/8-16NC x 1" LG. HHCS
5	MCG00032	2	1/4" DIA. x 3/4" LG. ROLL PIN
6	MAC00095	2	3/8-16NC x 1-1/4" LG. SHCS
7	MAC00102	4	3/8-16NC x 3" LG. SHCS
8	MAC00165	11	5/8-11NC x 2" LG. SHCS
9	MAC00202	2	1 - 8NC x 2-1/4" LG. SHCS
10	MAC00205	2	1 - 8NC x 3" LG. SHCS
11	MAC00207	2	1 - 8NC x 3-1/2" LG. SHCS
12	MJQ00260	1	STD 8-1/2 X 11 LITERATURE COMPARTMENT
13			
14	MBA00007	5	3/8-16NC HEX NUT
15	MBA00031	16	5/8-18NF HEX NUT
16	816342	2	SAFETY INSTRUCTION MANUAL LABEL
17	MBE00007	11	3/8" LOCK WASHER
18	MBE00011	11	5/8" LOCK WASHER
19	MBF00007	6	3/8" FLAT WASHER
20	MBG00003	16	5/8" FLAT WASHER
21	MBG00011	2	1" FLAT WASHER
22	MCB00016	2	EXTERNAL SNAP RING
23	2413902	8	TIE ROD
24	2414209	1	MOVABLE JAW CLAMP CYL. HANDLE
25	2414210	1	FIXED JAW CLAMP CYL. HANDLE
26	2414603	2	FIXED JAW TIE BAR
27	2424302	1	RELIEVED INDEXING VALVE GUARD
28	3601901	1	OUTER MOVABLE JAW ASSEMBLY
29	3601902	1	INNER MOVABLE JAW ASSEMBLY
30	3601903	1	INNER FIXED JAW ASSEMBLY
31	3601904	1	OUTER FIXED JAW ASSEMBLY
32	3602802	1	GUIDE ROD SUPPORT PLATE
33	3606301	2	GUIDE ROD/TIE BAR SPACER
34	3606401	2	GUIDE ROD RETAINER
35	3606501	2	TIE BAR RETAINER

**#1236A JAW SET ASSEMBLY**PARTS LIST

ITEM	PART NO.	QTY	DESCRIPTION
36	3607902	1	ELECTRICAL BOX MOUNTING BRACKET WELDMENT
37	3613802	1	GUARD RAIL
38	3608101	1	ELECTRICAL BOX MOUNT BRACE
39	816313	1	INDEX CYLINDER LOCK LABEL CAP
40	816366	1	INDEX CYLINDER NOTICE LABEL
41	816302	1	FACER VALVE LABEL CAP
42	MBF00004	4	#10 TYPE 'A' WIDE FLAT WASHER
43	MCK00003	4	3/16 DIA.x 3/8 GRIP BLIND RIVET
44	MLN00175	4	1/4 x 1/2 OD SEAL WASHER
45	8163120	2	LARGE McELROY BRANDING LABEL

**NOTES:**

1. SEE TIE ROD TORQUE PROCEDURE.
2. BACK DRILL 1/4" DIA. FROM 3606501, TIE BAR RETAINER, THROUGH JAW FOR ROLL PIN (LOCKING NOT CRITICAL).
3. ATTACH ITEM 39 LABEL CAP TO VALVE BEHIND FIXED JAW VALVE STACK.
4. ATTACH ITEM 40 LABEL TO BRACKET ABOVE BALL VALVE.
5. ATTACH ITEM 41 LABEL CAP TO VALVE BEHIND FACER MANIFOLD.

## DRAWING REVISION HISTORY LISTING

**PART NO:** 3631401

**DESCRIPTION:** #1236A JAW SET ASSEMBLY

<u>APPR.</u>	<u>REV</u>	<u>DATE</u>	<u>BY</u>	<u>DESCRIPTION OF REVISION</u>
TLW	A	2/24/99	AH	DELETED ITEMS #1(ANOM07) & #2(DL805) DUE TO BEING STRUCTURED AT PACKAGE LEVEL.
TLW	B	8/5/99	DJL	REVISED TO REMOVE ITEM 13 MJU00001(VHB TAPE) AND ADD ITEMS 42,43, AND 44 TO SECURE LITERATURE COMPARTMENT.
SWB	C	2/9/05	RLE	ADDED ITEM #45 8163120 QTY. (2) FOR NEW BRANDING LABEL.