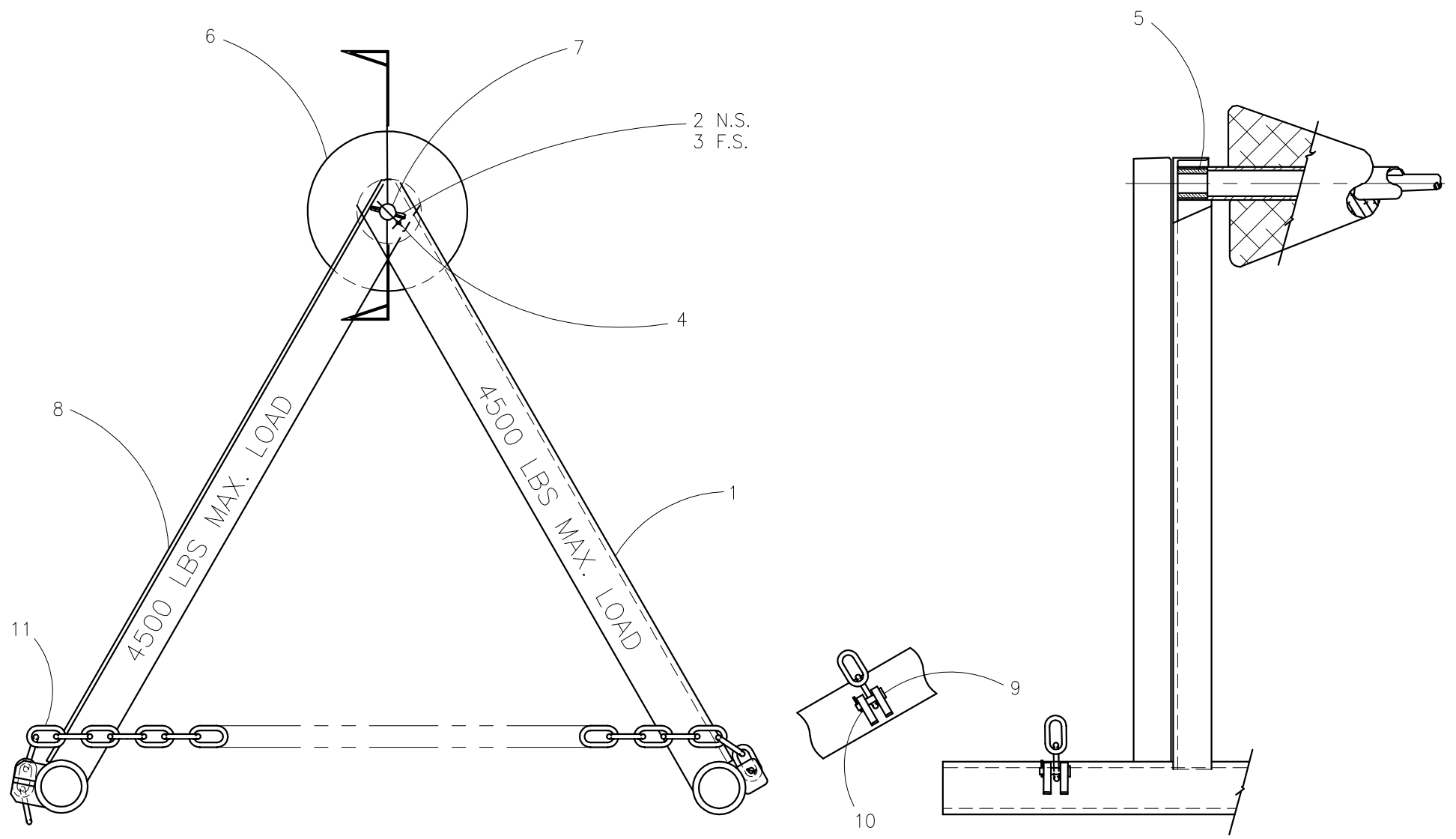




McElroy Manufacturing, Inc.
 The leader by design.
 Tulsa, Oklahoma U.S.A.

DRAWN: TLW	CHECK: RLE	APPRV'D: JCC	DATE: 4/03/96	DWG No.: 2429100	SHT No.: 1	REV No.: D	PART No.: 2429101
#824/#1236A PIPE STAND ASSEMBLY							CAD No.: 2429101

NOTE: THIS DRAWING AND THE INFORMATION CONTAINED THEREIN IS THE CONFIDENTIAL AND PROPRIETARY PROPERTY OF McElroy Manufacturing, Inc. THE DRAWING IS NOT TO BE REPRODUCED IN ANY MANNER, SUBMITTED OUTSIDE PARTIES FOR EXAMINATION, OR USED DIRECTLY OR INDIRECTLY FOR THE PURPOSES OTHER THAN THOSE FOR WHICH IT WAS FURNISHED WITHOUT WRITTEN PERMISSION OF McElroy Manufacturing, Inc.



#824 & #1236A PIPE STAND ASSEMBLYPARTS LIST

ITEM	PART NO.	QTY	DESCRIPTION
	2429101	1	Assembly
1	2429201	1	Pipe Stand Inner Leg Weldment
2	MCH00002	1	Ø1/8" x 1-1/2" Lg. Cotter Pin
3	MCG00031	1	Ø1/4" x 2" Lg. Roll Pin
4	MCG00032	1	Ø1/4" x 3/4" Lg. Roll Pin
5	MDM00018	2	1" I.D. x 1-3/8" O.D. x 1-1/2" Lg. Bronze Bushing
6	2423901	1	Pipe Stand Roller
7	2423401	1	Pipe Stand Roller Shaft
8	2429301	1	Pipe Stand Outer Leg Weldment
9	MCF00019	2	Ø1/2" x 2-11/32" Grip Clevis Pin
10	MCH00001	2	Ø1/8" X 1" LG. Cotter Pin
11	3638801	2	Chain Modification

DRAWING REVISION HISTORY LISTING

PART NO: 2429101

DESCRIPTION: #824 & #1236A PIPE STAND ASSEMBLY

<u>APPR.</u>	<u>REV</u>	<u>DATE</u>	<u>BY</u>	<u>DESCRIPTION OF REVISION</u>
TLW	A	12/16/97	TGW	REVISED ITEM 9 FROM P/N 4823909 CHAIN KEEPER PIN TO MCF00019 CLEVIS PIN (1/2 DIA x 2 11/32 GRIP). REVISED ITEM 10 (#MCH00001 COTTER PIN) QTY FROM (4) TO (2).
LAA	B	11/17/03	RLE	ADDED NOTE TO STENCIL MAX. LOAD ON LEGS FOR CUSTOMER INFORMATION.
SWB	C	4/23/04	ALK	CHANGED ITEM #11 MDG00021 3/8 SIZE CHAIN x 5 Ft. LG. TO 3638801 CHAIN MODIFICATION, DUE TO CHAIN BEING PURCHASED CUT.
SWB	D	09/28/06	ARB	REVISED TO MOVE WEIGHT LIMIT STENCIL NOTE FROM ASSEMBLY TO LEG WELDMENT DRAWINGS PER MANUFACTURING PROCESS