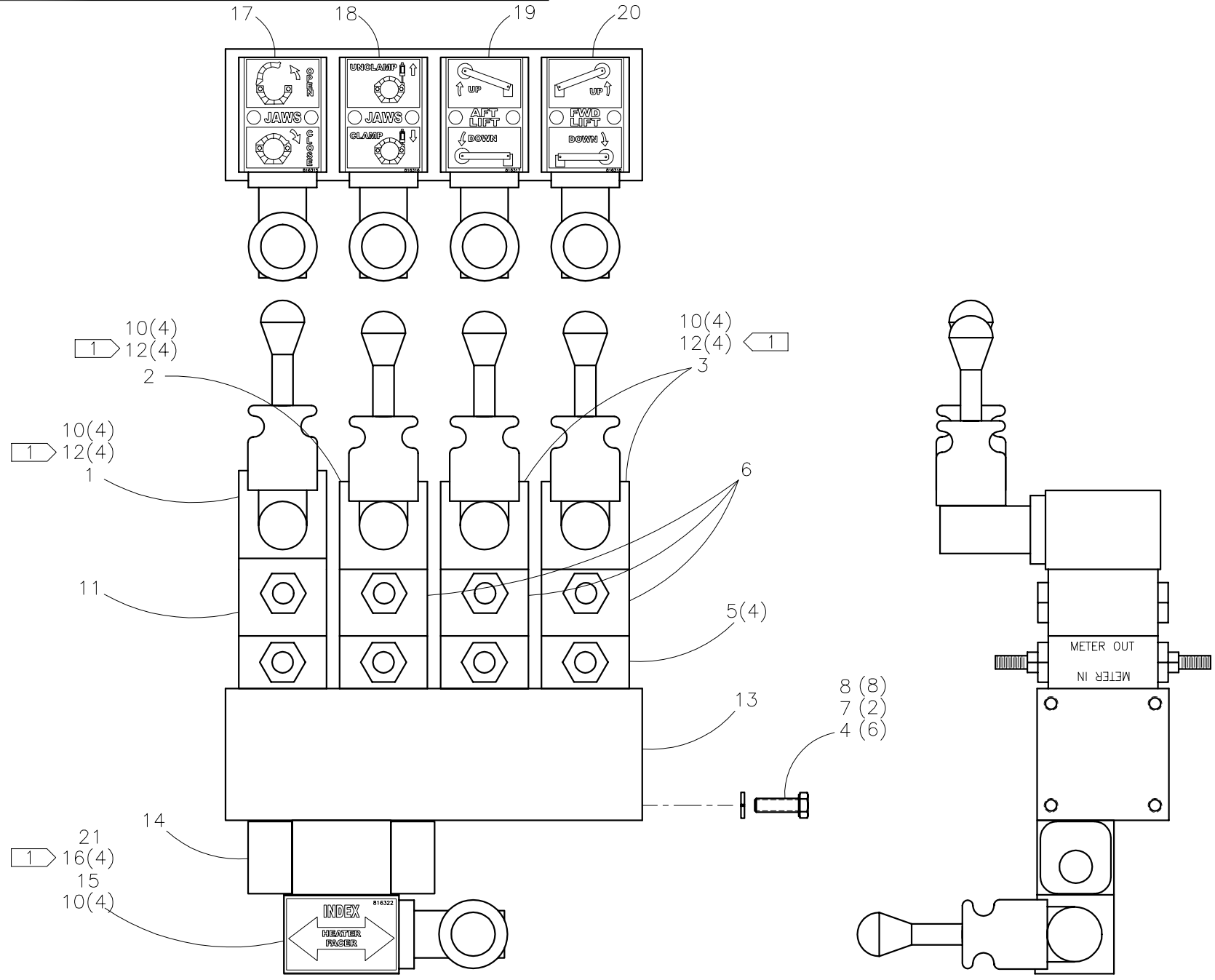




**McElroy Manufacturing, Inc.**  
 The leader by design.  
 Tulsa, Oklahoma U.S.A.

DRAWN: TLW	CHECK: BWP	APPRV'D: B	DATE: 7/05/98	DWG No.: 2424600	SHT No.: 3	REV No.: C	PART No.: 2424603
#1236A FIXED JAW STACK ASSEMBLY w/ MODIFIED MANIFOLD							CAD No.: 2424603

NOTE: THIS DRAWING AND THE INFORMATION CONTAINED THEREIN IS THE CONFIDENTIAL AND PROPRIETARY PROPERTY OF McElroy Manufacturing, Inc. THE DRAWING IS NOT TO BE REPRODUCED IN ANY MANNER, SUBMITTED TO OUTSIDE PARTIES FOR EXAMINATION, OR USED DIRECTLY OR INDIRECTLY FOR THE PURPOSES OTHER THAN THOSE FOR WHICH IT WAS FURNISHED WITHOUT WRITTEN PERMISSION OF McElroy Manufacturing, Inc.



**#1236A FIXED JAW STACK ASSEMBLY  
w/ MODIFIED MANIFOLD**

Parts List

ITEM	PART NO.	QTY.	DESCRIPTION
	<b>2424603</b>		<b>ASSEMBLY</b>
1	MEF00016	1	DIRECTIONAL VALVE
2	MEF00017	1	DIRECTIONAL VALVE
3	MEF00015	2	DIRECTIONAL VALVE
4	MAB00032	6	5/16-18NC X 3/4" LG HHCS
5	MEJ00001	4	FLOW CONTROL VALVE
6	MEJ00002	3	CHECK VALVE
7	MAB00033	2	5/16-18NC X 1" LG HHCS
8	MBE00006	8	5/16" LOCK WASHER
9			
10	MBE00004	20	#10 REG SPLIT LK WASHER
11	MEH00005	1	RELIEF VALVE
12	MAC00049	16	#10-24NC X 4-1/4" LG SHCS
13	3601001	1	MODIFIED MANIFOLD
14	3620801	1	MODIFIED RELIEF VALVE
15	MEF00048	1	DIRECTIONAL VALVE
16	MAC00046	4	#10-24NC X 2-3/4" LG SHCS
17	816315	1	JAWS OPEN/CLOSE LABEL
18	816316	1	JAWS CLAMP/UNCLAMP LABEL
19	816317	1	AFT PIPE LIFT UP/DOWN LABEL
20	816318	1	FWD PIPE LIFT UP/DOWN LABEL
21	816322	1	INDEX HEATER/FACER LABEL

**NOTES:**

1. TORQUE TO 4-5 FT-LBS (48-60 IN-LBS).
2. USE #MDL00093 FOR REPLACEMENT O-RING NUMBERS FOR ITEMS: 1,2,3,5,6,11 & 15. QUANTITY OF (4) FOR EACH ITEM.
3. THIS ASSEMBLY IS USED ON ALL #1236 MACHINES INCLUDING AND AFTER S/N 331820.

## DRAWING REVISION HISTORY LISTING

**PART NO:** 2424603  
**DESCRIPTION:** #1236A FIXED JAW STACK ASSEMBLY w/ MODIFIED MANIFOLD

<u>APPR.</u>	<u>REV</u>	<u>DATE</u>	<u>BY</u>	<u>DESCRIPTION OF REVISION</u>
TLW	--	02/23/98	RLE	ITEM 10, MBE00004, QUANTITY WAS (16).
SWB	A	10/16/98	TGW	ADDED ITEMS 17 THRU 21. ADDED MOUNTING BOLTS (ITEMS 4, 7 & 8). ADDED ITEM 14 MODIFIED RELIEF VALVE. REVISED ITEM 16 FROM P/N MAC00040 TO MAC00046. ADDED "#1236A" TO DESCRIPTION.
SWB	—	11/16/99	TLW	ADDED NOTE 2) THIS ASSEMBLY IS USED ON ALL #1236 MACHINES INCLUDING AND AFTER SERIAL NUMBER 331820.
SWB	B	06/06/05	JAB	CORRECTED DRAWING & MOUNTING HARDWARE OF ITEM #11 RELIEF VALVE TO MATCH AS BUILT. ADDED QTY TO ALL ITEMS FOR CLARITY.
SPA	C	12/19/05	JAB	REMOVED ITEM 9 (MAC00048) AND CHANGED QTY OF ITEM 12 (MAC00049) FROM 4 TO 16. CHANGES MADE TO ALLOW MORE THREAD ENGAGEMENT INTO MANIFOLD AND EASE ASSEMBLY PROCESS. ALSO, ADDED NOTE 1 TO ENSURE PROPER TORQUE ON MOUNTING BOLTS.