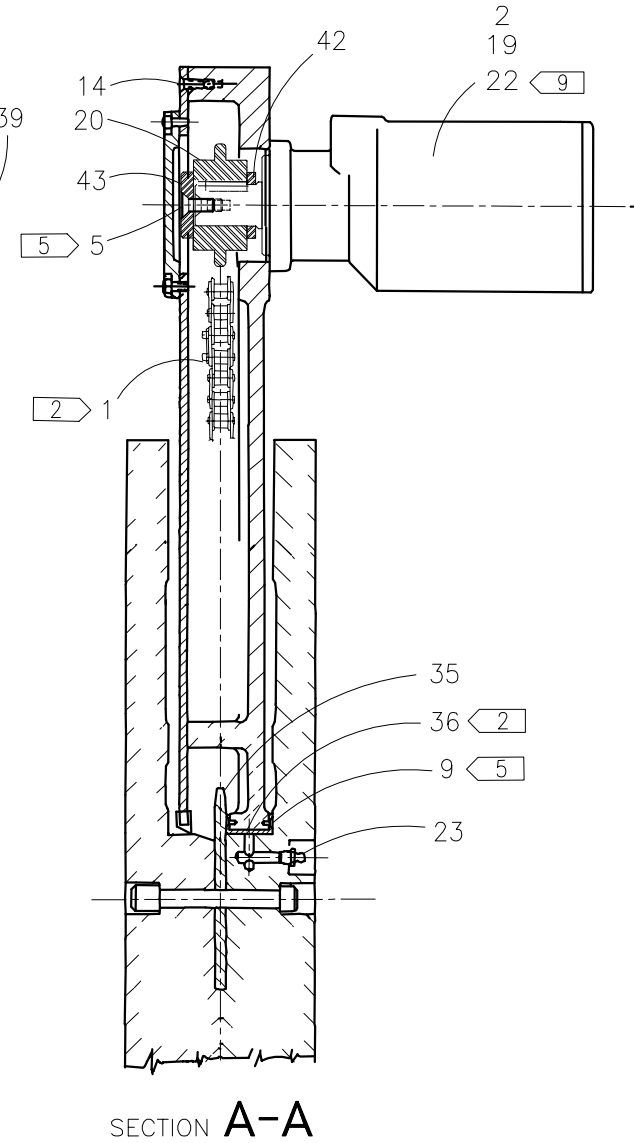
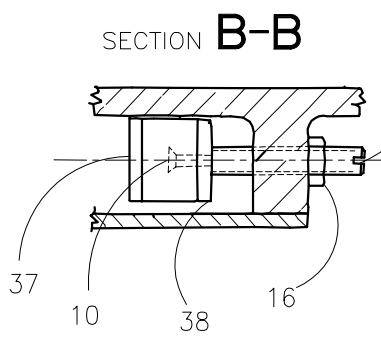
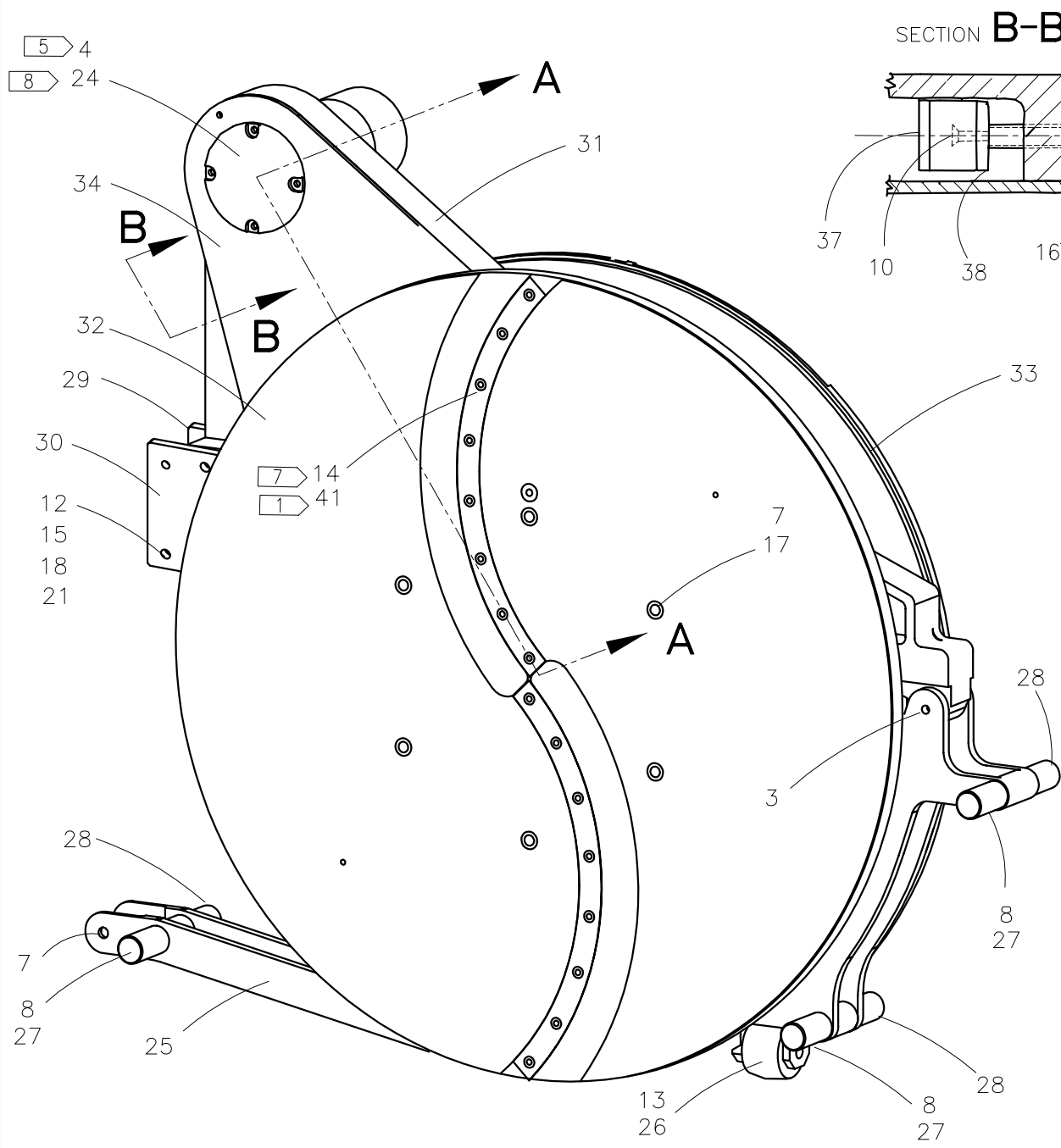




McElroy Manufacturing, Inc.
The leader by design.
Tulsa, Oklahoma U.S.A.

DRAWN: AH	CHECK: DWP	APPRV'D: B	DATE: 9/11/98	DWG No: 2440600	SHT No: 1	REV No: G	PART No: 2440601
630MM McHILYT FACER ASSEMBLY							CAD No: 2440601

NOTE: THIS DRAWING AND THE INFORMATION CONTAINED THEREIN IS THE CONFIDENTIAL AND PROPRIETARY PROPERTY OF McElroy Manufacturing, Inc. THE DRAWING IS NOT TO BE REPRODUCED IN ANY MANNER, SUBMITTED OUTSIDE PARTIES FOR EXAMINATION, OR USED DIRECTLY OR INDIRECTLY FOR THE PURPOSES OTHER THAN THOSE FOR WHICH IT WAS FURNISHED WITHOUT WRITTEN PERMISSION OF McElroy Manufacturing, Inc.



**630MM McHiLYT™
FACER ASSEMBLY**

Parts List

ITEM	PART NO.	QTY.	DESCRIPTION
	2440601		ASSEMBLY
1	A2423201	1	24/36 FACER CHAIN ASSEMBLY
2	MAB00069	4	1/2-13NC X 1-1/2"LG HHCS
3	MAB00064	4	3/8-16NC X 1"LG HHCS
4	MAC00051	4	1/4-20NC X 1/2"LG SHCS
5	MAD00073	1	3/8-16NCX1LG FHSCS
6	MAC00145	2	1/2-13NC X 2-1/2"LG SHCS
7	MAC00149	7	1/2-13NC X 3-1/2"LG SHCS
8	MAC00152	3	1/2-13NC X 5"LG SHCS
9	MAD00002	16	#4-40NC X 3/8"LG FHSCS
10	MAD00033	2	10-24NC X 3/4"LG FHSCS
11	MAE00023	8	10-24NC X 1/2"LG BHSCS
12	MAF00052	3	1/2 DIA X 3"LG SOCKET HEAD SHOULDER SCREW
13	MAF00067	1	5/8 DIA X 2-1/2"LG SOCKET HEAD SHOULDER SCREW
14	MAH00077	32	1/4-20NC X 3/4"LG FHSCS SS
15	MBA00007	4	3/8-16NC FINISHED HEX NUT
16	MBB00029	1	1/2-20NF FINISHED JAM NUT
17	MBC00017	6	1/2-13NC ALLEN LOCK NUT
18	MBE00007	4	3/8" REGULAR SPLIT LOCK WASHER
19	MBE00009	4	1/2" REGULAR SPLIT LOCK WASHER
20	MDF00073	1	CHAIN SPROCKET
21	MAD00109	1	1/2-13NC X 2-3/4"LG FHSCS
22	MEC00006	1	HYDRAULIC MOTOR
23	MFJ00002	1	GREASE ZERK
24	1231102	1	COVER PLATE
25	2443501	1	FACER ROLLER BRACKET
26	2443601	1	FACER ROLLER
27	2443901	3	LEFT LOWER REST BUTTON
28	2444001	3	RIGHT LOWER REST BUTTON
29	2458901	1	630 McHiYLT FACER/PIVOT ARM C'SUNK SPLICE PLATE
30	2459001	1	630 McHiLYT FACER/PIVOT ARM TAPPED SPLICE PLATE
31	3602104	1	630 McHiLYT FACER BODY
32	3602514	1	630 McHiLYT TAPERED BLADE HOLDER
33	3602515	1	630 McHiLYT GREAS ZERK BLADE HOLDER
34	3603604	1	FACER BODY COVER ASSEMBLY
35	3603607	1	FACER DRIVE SPROCKET MODIFICATION

**630MM McHiLYT™
FACER ASSEMBLY**

Parts List

ITEM	PART NO.	QTY.	DESCRIPTION
36	3603608	2	FACER BEARING
37	3603701	1	CHAIN TENSIONER SHOE
38	3603801	1	FACER CHAIN TENSIONER MOUNTING PLATE
39	3603901	1	FACER CHAIN TENSIONER ADJUSTMENT SCREW
40			
41	2460501	4	FACER BLADE
42	3629103	1	FACER SPROCKET SPACER
43	3629201	1	FACER SPROCKET RETAINER

NOTES:

1. INSTALL IN ITEMS #32(3602514) & #33(3602515)
2. LUBRICATE WITH EP GREASE.
3. REFER TO HYDRAULIC SCHEMATIC 2440301, 02 & 03.
- 4.
5. INSTALL WITH THREAD LOCKING COMPOUND.
6. PRE-LUBRICATE CHAIN & PACK FACER HOUSING 1/3 TO 1/2 FULL OF GREASE SPECIFIED ABOVE.
7. INSTALL WITH HIGH TEMP ANTI-SIEZE LUBRICANT.
8. INSTALL GASKET SEALER.
9. HYDRAULIC MOTOR FURNISHED WITH 5/16" SQUARE KEY X 1-1/4"LG. FOR REPLACEMENT KEY ORDER MCK00052.

DRAWING REVISION HISTORY LISTING

PART NO: 2440601

DESCRIPTION: 630MM McHiLYT FACER ASSEMBLY

<u>APPR.</u>	<u>REV</u>	<u>DATE</u>	<u>BY</u>	<u>DESCRIPTION OF REVISION</u>
DWP	B	9/11/98	AH	REVISED AND REDRAWN TO AUTOCAD.
SWB	C	10/27/98	DJL	FLIPPED CHAIN SPROCKET (ITEM 20) OVER TO PROVIDE BETTER CHAIN ALIGNMENT. ADDED ITEM 44 MCK00041 (5/16 KEY X 1/2" LG.).
TLW	D	2/15/00	MLM	ITEM 20 WAS MDF00068, CHANGED TO MDF00073. ITEM 42 WAS 3629101, CHANGED TO 3629103. ADDED NOTE 9. REMOVED ITEM 44.
RAD	E	4/12/00	MLM	ITEM 7 QTY WAS 6, CHANGED TO 7. ITEM 12 WAS MAF00051, CHANGED TO MAF00052-QTY 3. ADDED ITEM 21-MAD00109.
LAA	F	10/16/03	BWW	REVISED ITEM 22 FROM MEC00006 DANFOSS MOTOR TO MEC00032 PARKER MOTOR.
SWB	G	4/1/04	BWW	REVISED ITEM 22 FROM MEC00032 TO MEC00006 BECAUSE MEC00032 IS NOW BACKWARDS COMPATIBLE WITH MEC00006.