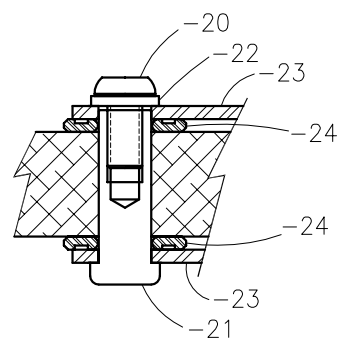




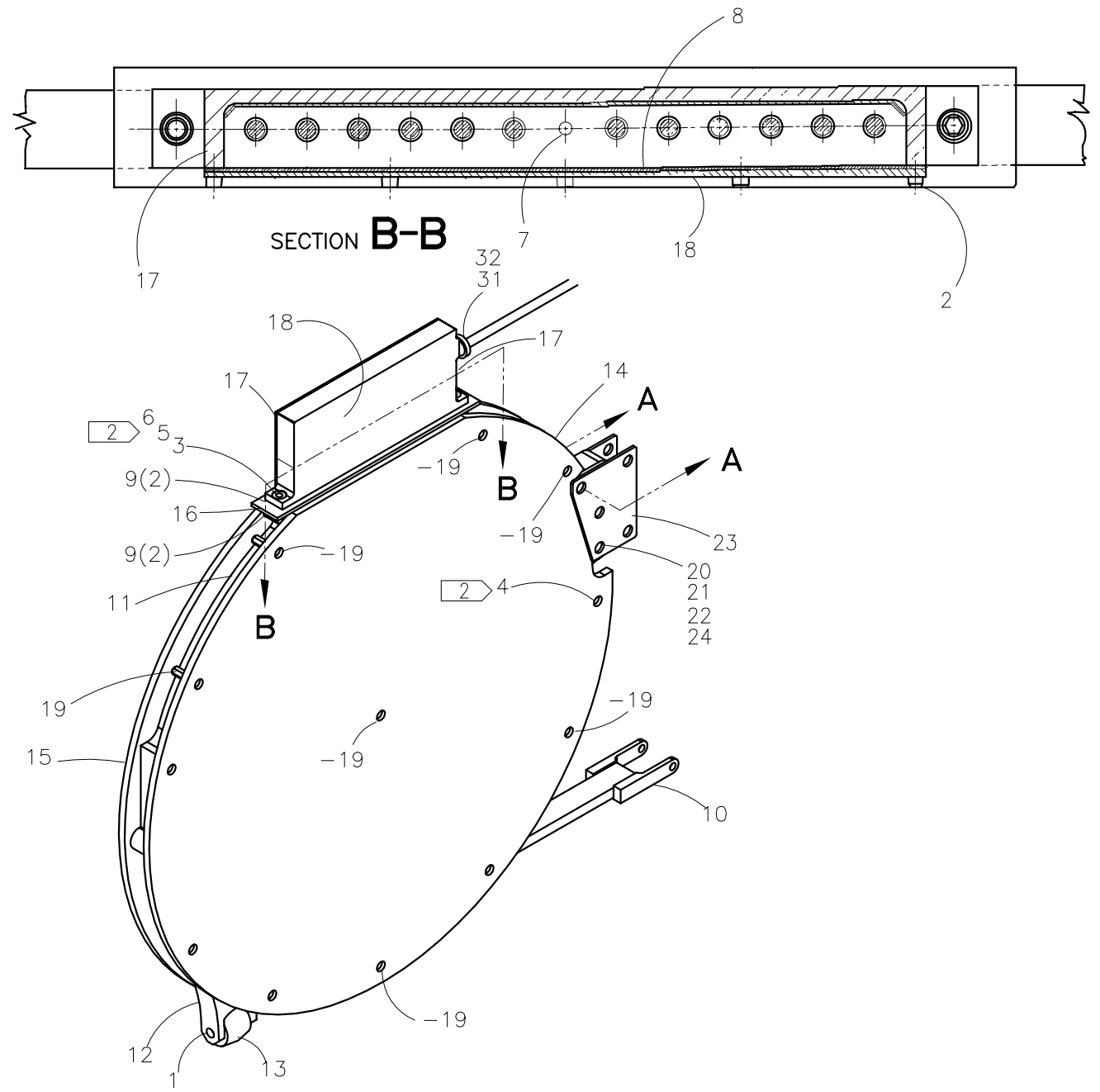
McElroy Manufacturing, Inc.
 The leader by design.
 Tulsa, Oklahoma U.S.A.

DRAWN: AH	CHECK: SWB	APPR'D: B	DATE: 9/11/98	DWG No: 2440500	SHT No: 1A	REV No: C	PART No: 2440501
630MM McHiLYT HEATER ASSEMBLY							CAD No: 2440501

NOTE: THIS DRAWING AND THE INFORMATION CONTAINED THEREIN IS THE CONFIDENTIAL AND PROPRIETARY PROPERTY OF McElroy Manufacturing, Inc. THE DRAWING IS NOT TO BE REPRODUCED IN ANY MANNER, SUBMITTED OUTSIDE PARTIES FOR EXAMINATION, OR USED DIRECTLY OR INDIRECTLY FOR THE PURPOSES OTHER THAN THOSE FOR WHICH IT WAS FURNISHED WITHOUT WRITTEN PERMISSION OF McElroy Manufacturing, Inc.



SECTION A-A
 TYPICAL 3 PLACES IN HEATER

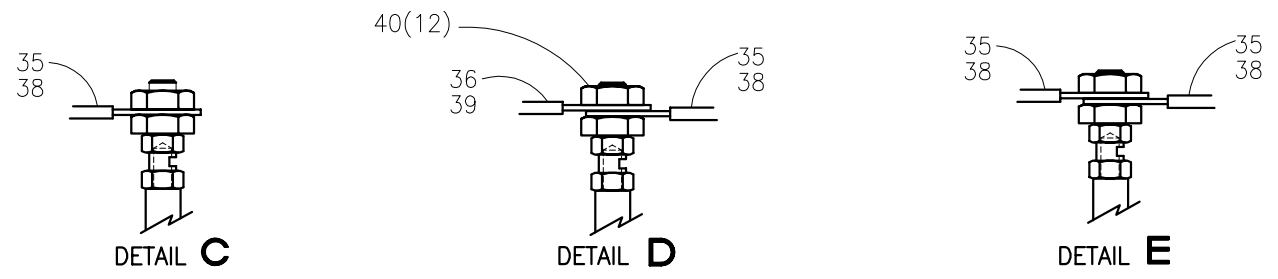




McElroy Manufacturing, Inc.
 The leader by design.
 Tulsa, Oklahoma U.S.A.

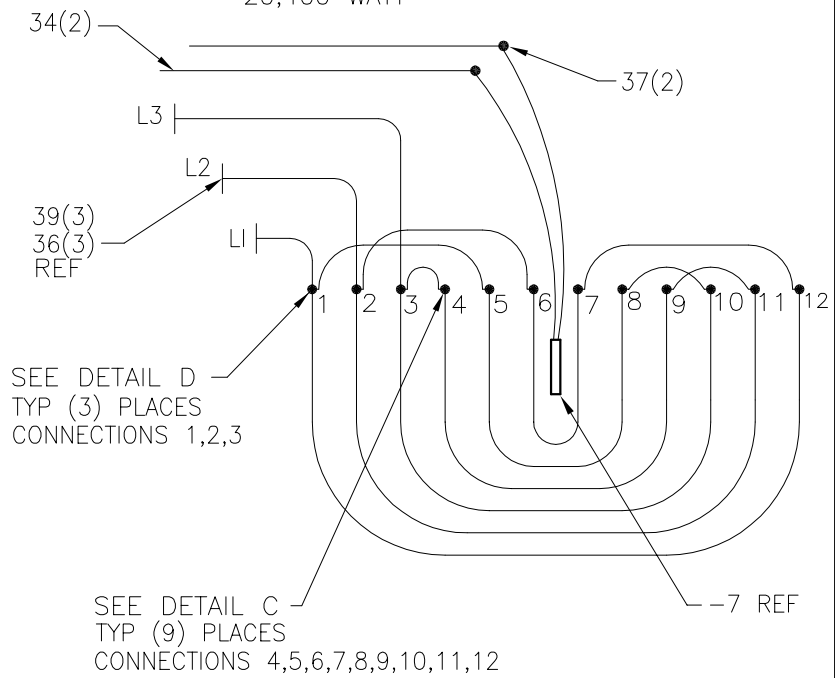
DRAWN: MLM	CHECK: BWP	APPRV'D: SWB	DATE: 1/17/00	DWG No: 2440500	SHT No: 1B	REV No: C	PART No: 2440501
630MM McHiLYT HEATER ASSEMBLY							CAD No: 2440501

NOTE: THIS DRAWING AND THE INFORMATION CONTAINED THEREIN IS THE CONFIDENTIAL AND PROPRIETARY PROPERTY OF McElroy Manufacturing, Inc. THE DRAWING IS NOT TO BE REPRODUCED IN ANY MANNER, SUBMITTED OUTSIDE PARTIES FOR EXAMINATION, OR USED DIRECTLY OR INDIRECTLY FOR THE PURPOSES OTHER THAN THOSE FOR WHICH IT WAS FURNISHED WITHOUT WRITTEN PERMISSION OF McElroy Manufacturing, Inc.



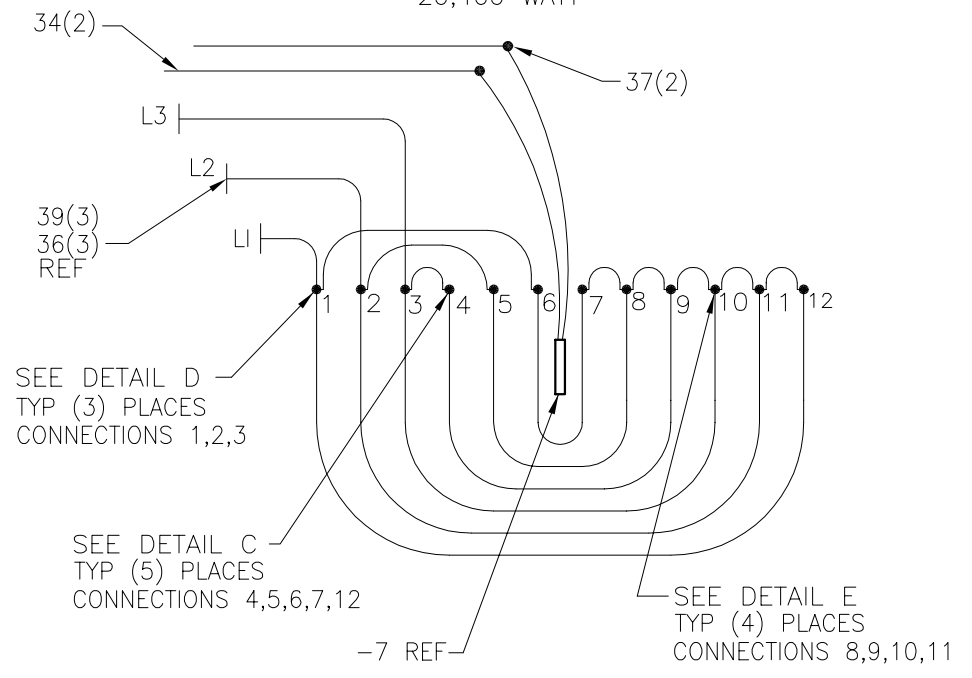
HEATER SCHEMATIC

480V, 60Hz, 3Ph
 20,400 WATT



HEATER SCHEMATIC

380-415V, 50Hz, 3Ph
 20,400 WATT



**630MM McHiLYT™
HEATER ASSEMBLY**

Parts List

ITEM	PART NO.	QTY.	DESCRIPTION
	2440501		ASSEMBLY
1	MAF00067	1	5/8 DIA X 2-1/2"LG SHLD SCR STL BL
2	MAH00081	12	#10-32NF X 1/2"LG SHCS 18-8SS
3	MAH00086	2	3/8-16NC X 2-3/4"LG SHCS 18-8 SS
4	MAH00142	24	5/16-18NC X 1"LG FHSCS SS
5	MBA00007	2	3/8-16NC FINISHED HEX NUT STL PL
6	MBE00007	2	3/8" REG SPLIT LK WASHER STL PL
7	MKI00002	1	100 OHM PLATINUM RTD
8	2410602	1	GASKET-TERMINAL ENCLOSURE COVER
9	2410603	4	GASKET-TERMINAL ENCLOSURE
10	2443201	1	HEATER BRACE BAR
11	2443301	1	630MM MCHILYT HEATER BODY
12	2443701	1	HEATER ROLLER BRACKET
13	2443801	1	HEATER ROLLER
14	2444301	1	BUTT FUSION PLATE
15	2444302	1	BUTT FUSION PLATE
16	3602005	1	HEAT SINK-16"/36" HEATER
17	3603102	1	TERMINAL ENCLOSURE
18	3603103	1	COVER-TERMINAL ENCLOSURE
19	3617301	7	COUPLING NUT-BUTT PLATE HEATERS
20	MAE00117	5	1/2-13NC X 1" LG. BHSCS STL BL
21	3613303	5	HEATER SPLICE PLATE NUT
22	MBE00010	5	9/16" REG SPLIT LOCK WASHER STL PL
23	3604703	2	HTR&PIVOT ARM SPLICE PLATE
24	4815501	6	HTR SPLICE PLATE SPACER
25			
31	MLI00001	6'	1/2" FLEXIBLE CONDUIT
32	MLJ00012	1	1/2" CONDUIT CONNECTOR
34	MLL00004	10'	#18 TYPE TAGT ELECTRICAL WIRE
35	MLL00025	3'	#12 TYPE TGGT ELECTRICAL WIRE
36	MLL00033	15'	#10 TGGT ELECTRICAL WIRE
37	MLM00012	2	CONNECTOR
38	MLM00024	18	RING TERMINAL
39	MLM00117	3	RING TERMINAL
40	MBA00004	12	#10-24NC HEX NUT STL PL

NOTES:

1. SEE ELECTRICAL SCHEMATIC 2440802 FOR COMPLETE MACHINE WIRING.
2. INSTALL W/HIGH TEMPERATURE ANTI-SEIZE COMPOUND.
3. SET AND CHECK TEMPERATURE PER SP-9

DRAWING REVISION HISTORY LISTING

PART NO: 2440501
DESCRIPTION: 630MM McHiLYT HEATER ASSEMBLY

<u>APPR.</u>	<u>REV</u>	<u>DATE</u>	<u>BY</u>	<u>DESCRIPTION OF REVISION</u>
DWP	A	9/11/98	AH	REVISED AND REDRAWN TO AUTOCAD.
SWB	B	1/17/00	MLM	ADDED SHT.1B, ADDED SECTION B-B ON SHT.1A. ADDED NOTE 2. ADDED ITEMS 31-40
JRP	C	10/6/05	BEA	ADDED 380-415 VOLT ELECTRICAL SCHEMATIC.