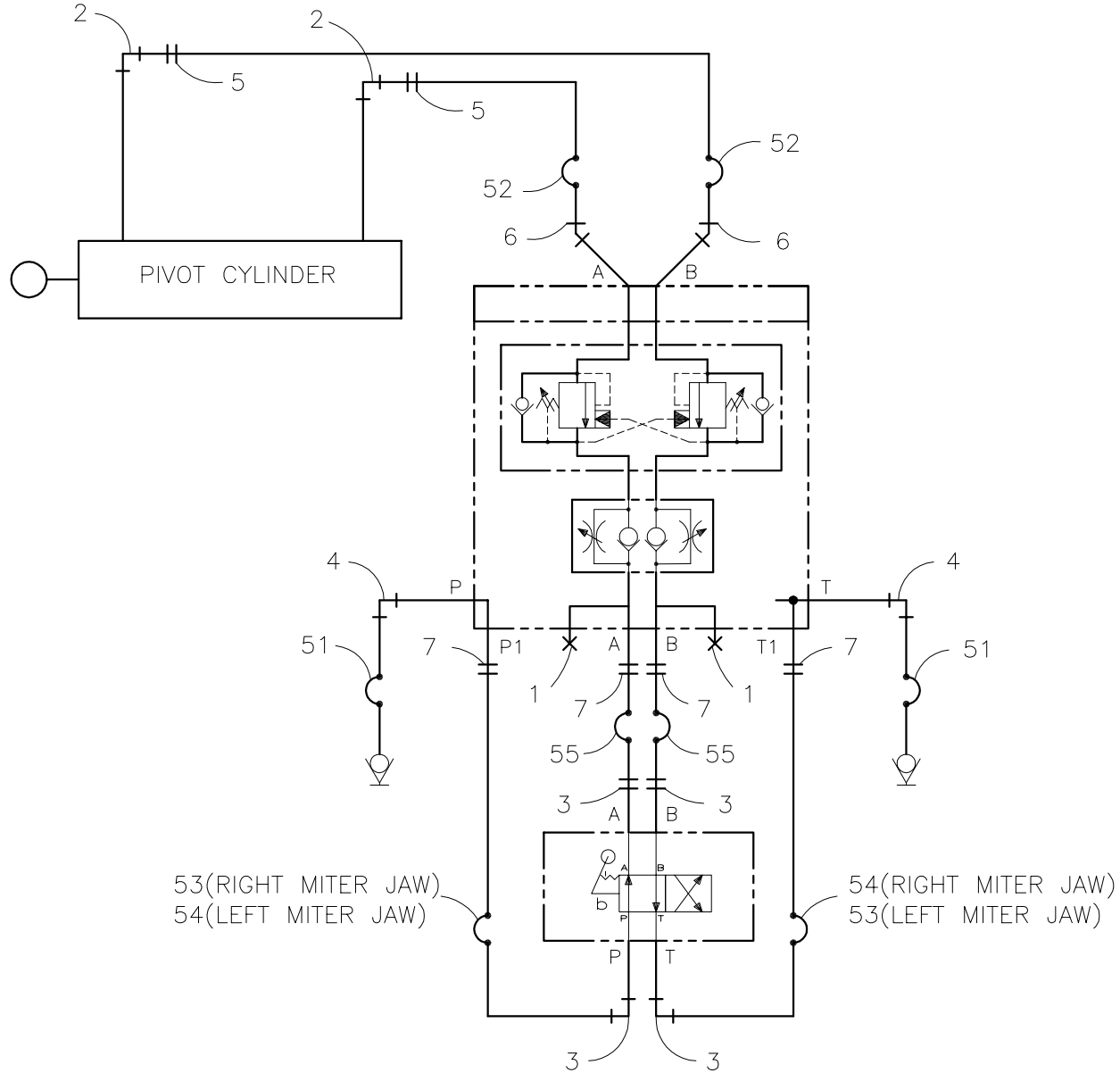




630MM McHILYT FIXED & MOVABLE JAW PLUMBING SCHEMATIC

NOTE: THIS DRAWING AND THE INFORMATION CONTAINED THEREIN IS THE CONFIDENTIAL AND PROPRIETARY PROPERTY OF McElroy Manufacturing, Inc. THE DRAWING IS NOT TO BE REPRODUCED IN ANY MANNER, SUBMITTED OUTSIDE PARTIES FOR EXAMINATION, OR USED DIRECTLY OR INDIRECTLY FOR THE PURPOSES OTHER THAN THOSE FOR WHICH IT WAS FURNISHED WITHOUT WRITTEN PERMISSION OF McElroy Manufacturing, Inc.



**630MM McHiLYT FIXED & MOVABLE JAW  
PLUMBING SCHEMATIC**

Parts List

ITEM	PART NO.	QTY.	DESCRIPTION
	<b>2440304</b>	<b>1</b>	<b>ASSEMBLY</b>
1	MFA00014	2	6MPT PLUG
2	MFC00047	2	8FPT/10MSAE ELBOW
3	MFB00026	4	6MPT/6MJIC ADAPTER
4	MFB00027	2	6MPT/6MJIC ELBOW
5	MFB00030	2	8MPT/6MJIC ADAPTER
6	MFC00022	2	6MSAE/6MJIC ELBOW 45
7	MFC00002	4	6MSAE/6MJIC ADAPTER

**NOTES:**

1. THIS SCHEMATIC APPLIES TO EITHER THE FIXED OR MOVABLE MITER JAW.
2. FOR 630MM McHiLYT FIXED & MOVABLE JAW HOSE ASSEMBLIES (ITEMS #51 & LARGER) SEE #A2440304 630MM McHiLYT HOSE KIT.

**630MM McHiLYT FIXED & MOVABLE JAW  
PLUMBING SCHEMATIC HOSE ASSEMBLY**

Parts List

ITEM	PART NO.	QTY.	DESCRIPTION
	<b>A2440304</b>	<b>1</b>	<b>ASSEMBLY</b>
51	HBADBD204	2	HOSE ASSEMBLY OAL 204"
52	HBBDBD041	2	HOSE ASSEMBLY OAL 41"
53	HBBDED036	1	HOSE ASSEMBLY OAL 36"
54	HBBDDD035	1	HOSE ASSEMBLY OAL 35"
55	HBBDED034	2	HOSE ASSEMBLY OAL 34"

**NOTES:**

1. MAXIMUM HEIGHT OF THIS ASSEMBLY MUST NOT EXCEED 28"
2. MANIFOLD TO BE MOUNTED ON UPPER LEFT CORNER ON FRONT OF RESERVOIR WALL WITH A & B PORTS ON BOTTOM SIDE OF MANIFOLD.
3. THE UNIT TO BE PAINTED A LIGHT MACHINE GREY COLOR. COMPONENTS WITH PAINTED SURFACES DO NOT NEED REPAINTING. HOSES AND LIKE ITEMS DO NOT NEED PAINTING.
4. SEE #2440304 630MM McHiLYT FIXED & MOVABLE JAW PLUMBING SCHEMATIC FOR LOCATION OF ITEM NUMBERS.

## DRAWING REVISION HISTORY LISTING

**PART NO:** 2440304

**DESCRIPTION:** 630MM McHiLYT FIXED & MOVABLE JAW PLUMBING SCHEMATIC

<u>APPR.</u>	<u>REV</u>	<u>DATE</u>	<u>BY</u>	<u>DESCRIPTION OF REVISION</u>
DWP	A	7/08/97	BB	CORRECTED SCHEMATIC TO AS BUILT. ITEM # 2 MFA00190 TO MFC00047, ITEM #3 MFB00026 QTY. (8) TO (4). ADDED ITEM #7 MFC00002 QTY. (4).
SPA	B	11/14/05	RLE	REVISED ITEM #53 HBBDCD032 TO HBBDED036, ITEM #54 HBBDDD032 TO HBBDDD035 & ITEM #55 HBBDED032 TO HBBDED034 FOR BETTER HOSE FIT. ADDED NOTE #2 ON PLUMBING SCHEMATIC PARTS LIST & NOTE #4 ON HOSE ASSEMBLY PARTS LIST.