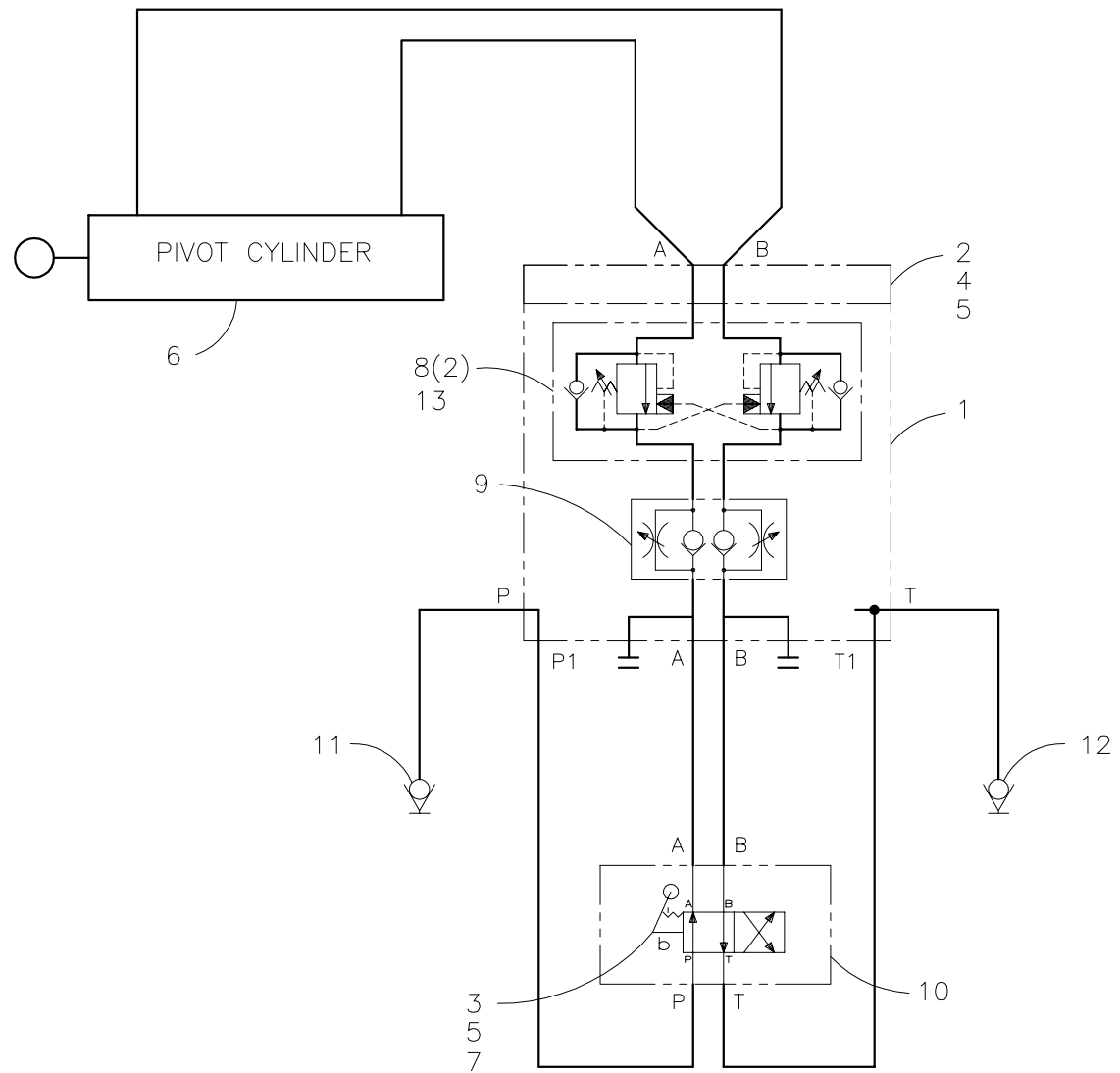




McElroy Manufacturing, Inc.
 The leader by design.
 Tulsa, Oklahoma U.S.A.

DRAWN: SS	CHECK: DWP	APPRV'D: B	DATE: 8/28/96	DWG No: 2440300	SHT No: 3	REV No: B	PART No: 2440303
630MM McHILYT FIXED & MOVABLE JAW HYDRAULIC SCHEMATIC							CAD No: 2440303

NOTE: THIS DRAWING AND THE INFORMATION CONTAINED THEREIN IS THE CONFIDENTIAL AND PROPRIETARY PROPERTY OF McElroy Manufacturing, Inc. THE DRAWING IS NOT TO BE REPRODUCED IN ANY MANNER, SUBMITTED OUTSIDE PARTIES FOR EXAMINATION, OR USED DIRECTLY OR INDIRECTLY FOR THE PURPOSES OTHER THAN THOSE FOR WHICH IT WAS FURNISHED WITHOUT WRITTEN PERMISSION OF McElroy Manufacturing, Inc.



UNLESS NOTED OTHERWISE: (3) PLC. DIM'S .XXX = ±0.005" (2) PLC. DIM'S .XX = ±0.010" FRACTIONAL DIM'S = ±1/32" ANGULAR DIM'S = ±1/4" REMOVE ALL BURRS BREAK ALL SHARP EDGES STAMP OR ETCH P/N ON ALL DETAIL PARTS

MMI NUMBER	ITEM	QTY.	SIZE AND DESCRIPTION

**630MM McHiLYT FIXED & MOVABLE JAW
HYDRAULIC SCHEMATIC**

Parts List

ITEM	PART NO.	QTY.	DESCRIPTION
	2440303	1	ASSEMBLY
1	2401201	1	630MM McHiLYT MANIFOLD MODIFICATION
2	2401501	1	630MM McHiLYT VALVE STACK MANIFOLD
3	MAC00040	4	10-24NC x 1" LG. SHCS
4	MAC00048	4	10-24NC x 4" LG. SHCS
5	MBE00004	8	#10 REG SPLIT LK WASHER STL PL
6	MEB00097	1	1-1/2"B x 6"S x 5/8"R HYD CYLINDER
7	MEF00016	1	DIRECTIONAL VALVE
8	MEF00061	2	COUNTERBALANCE VALVE CARTRIDGE
9	MEJ00001	1	FLOW CONTROL VALVE
10	MEL00005	1	SUBPLATE
11	MFH00003	1	3/8"FPT QUICK DISCONNECT COUPLER
12	MFH00004	1	3/8"FPT QUICK DISCONNECT NIPPLE
13	MEL00018	1	COUNTERBALANCE VALVE SANDWICH MANIFOLD
14	MCG00044	1	5/32 DIA. x 3/8 LG. ROLL PIN

NOTES:

1. THIS SCHEMATIC APPLIES TO EITHER THE FIXED OR MOVEABLE MITER JAW

DRAWING REVISION HISTORY LISTING

PART NO: 2440303

DESCRIPTION: 630MM McHiLYT FIXED & MOVABLE JAW HYDRAULIC SCHEMATIC

<u>APPR.</u>	<u>REV</u>	<u>DATE</u>	<u>BY</u>	<u>DESCRIPTION OF REVISION</u>
DWP	A	5/06/97	BB	CHANGED ITEM NO. 11 MFH00024 TO MFH00003, CHANGED ITEM NO. 12 MFH00025 TO MFH00004.
SPA	B	11/14/05	RLE	REVISED ITEM #8 MEH00005 QTY. (1) TO MEF00061 QTY. (2), ADDED ITEM #13 MEL00018 & #14 MCG00044. CHANGES MADE TO IMPROVE PERFORMANCE.