



McElroy Manufacturing, Inc.

The leader by design.

Tulsa, Oklahoma U.S.A.

DRAWN: SWB

CHECK: BWP

APPRV'D: B

DATE: 4/25/95

DWG No: 2428500

SHT No: 1A

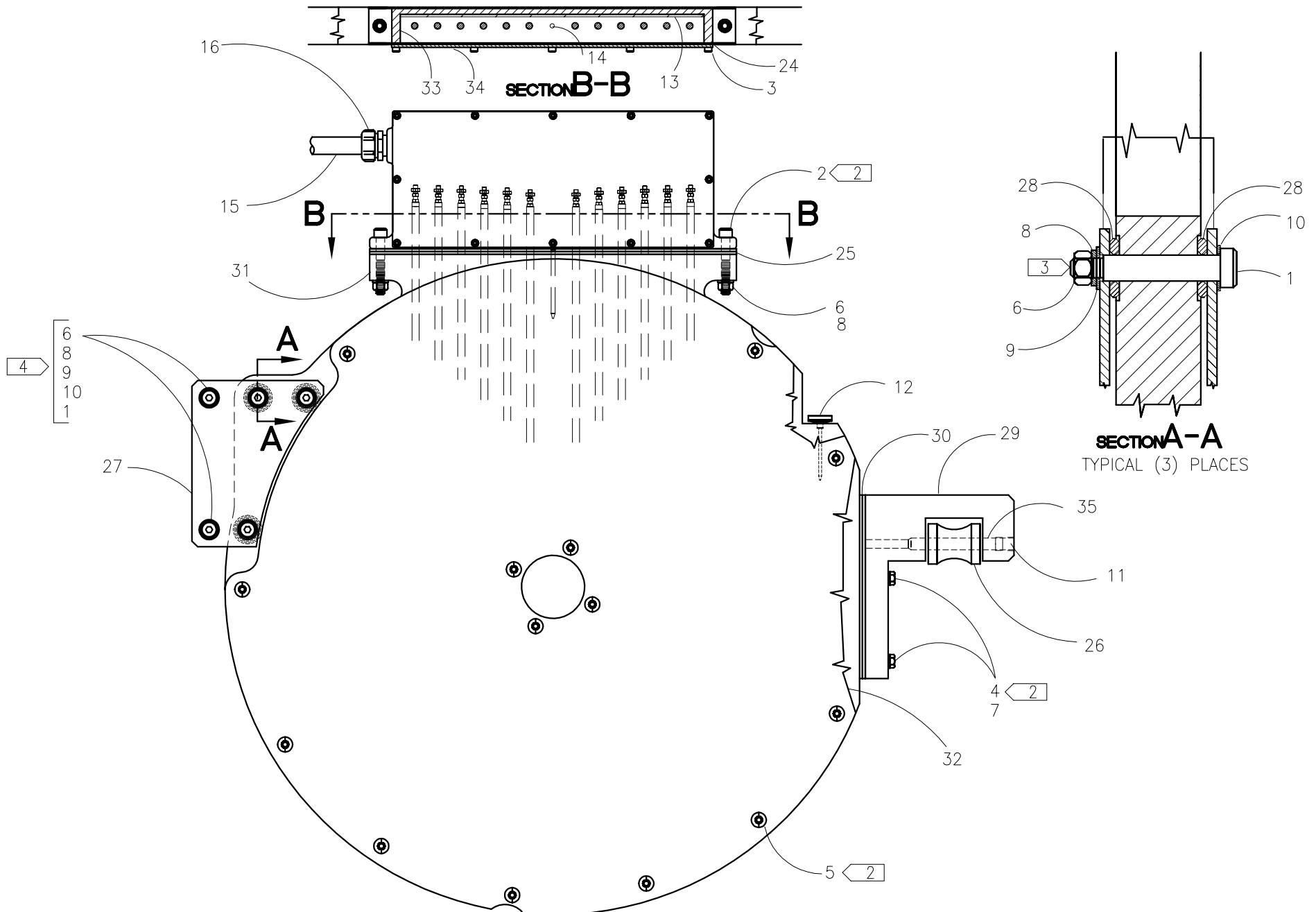
REV No: H

PART No: 2428501

#824A BUTT PLATE HEATER ASSEMBLY

CAD No: 2428501

NOTE: THIS DRAWING AND THE INFORMATION CONTAINED THEREIN IS THE CONFIDENTIAL AND PROPRIETARY PROPERTY OF McElroy Manufacturing, Inc. THE DRAWING IS NOT TO BE REPRODUCED IN ANY MANNER, SUBMITTED OUTSIDE PARTIES FOR EXAMINATION, OR USED DIRECTLY OR INDIRECTLY FOR THE PURPOSES OTHER THAN THOSE FOR WHICH IT WAS FURNISHED WITHOUT WRITTEN PERMISSION OF McElroy Manufacturing, Inc.





McElroy Manufacturing, Inc.

The leader by design.

Tulsa, Oklahoma U.S.A.

DRAWN: SWB

CHECK: BWP

APPRV'D: B

DATE: 4/25/95

DWG No: 2428500

SHT No: 1B

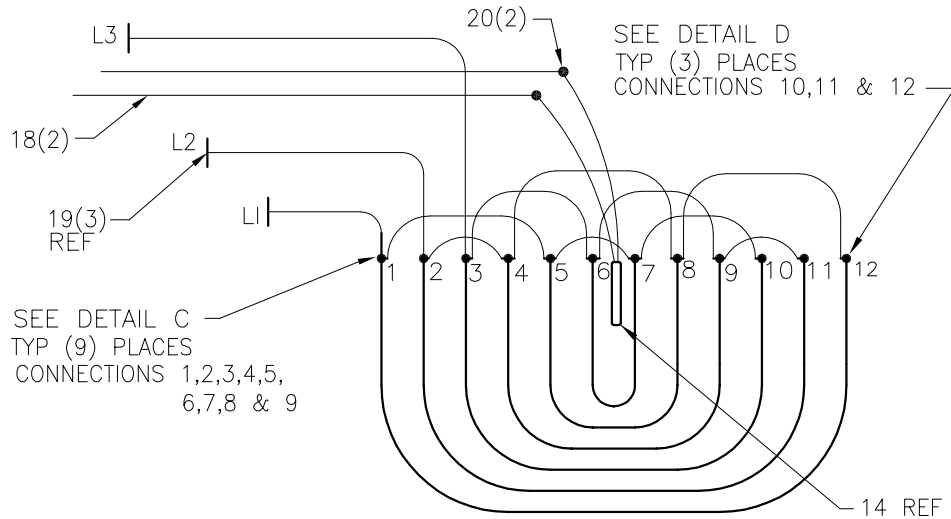
REV No: H

PART No: 2428501

#824A BUTT PLATE HEATER ASSEMBLY

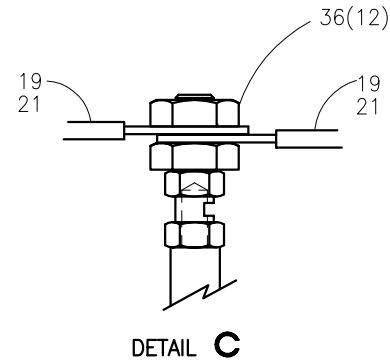
CAD No: 2428501

NOTE: THIS DRAWING AND THE INFORMATION CONTAINED THEREIN IS THE CONFIDENTIAL AND PROPRIETARY PROPERTY OF McElroy Manufacturing, Inc. THE DRAWING IS NOT TO BE REPRODUCED IN ANY MANNER, SUBMITTED OUTSIDE PARTIES FOR EXAMINATION, OR USED DIRECTLY OR INDIRECTLY FOR THE PURPOSES OTHER THAN THOSE FOR WHICH IT WAS FURNISHED WITHOUT WRITTEN PERMISSION OF McElroy Manufacturing, Inc.

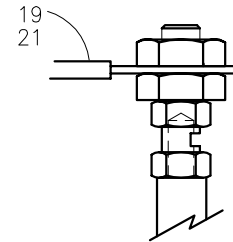


HEATER SCHEMATIC

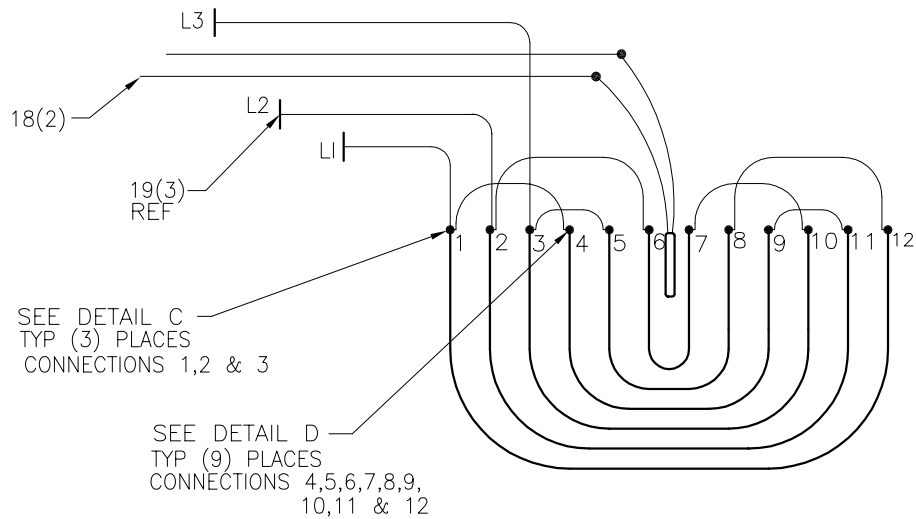
220-240V, 50/60Hz, 3Ph
10,950 WATTS



DETAIL C

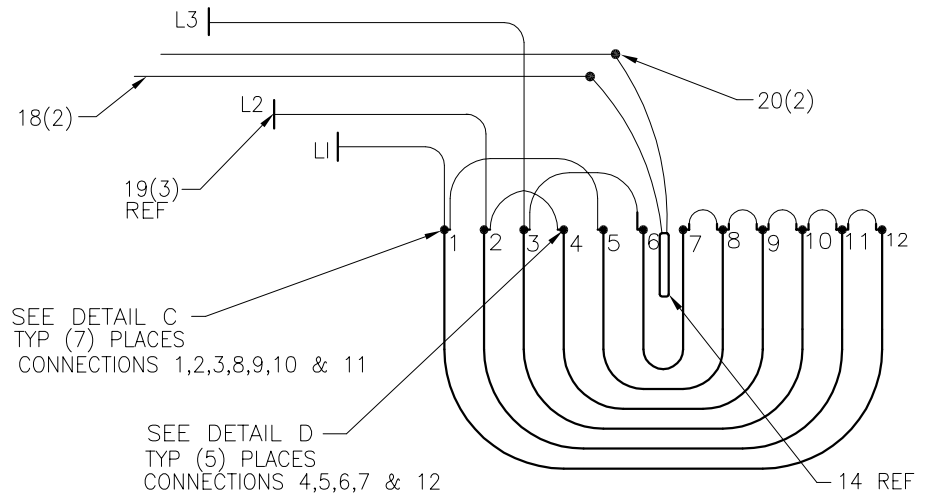


DETAIL D



HEATER SCHEMATIC

480V, 60Hz, 3Ph
10,950 WATTS



HEATER SCHEMATIC

380-415V, 50Hz, 3Ph
10,950 WATTS

#824A BUTT PLATE HEATER ASSEMBLYPARTS LIST

ITEM	PART NO.	QTY	DESCRIPTION
	2428501		Assembly
1	MAF00049	5	1/2" Dia. x 2-1/4" Lg. Shoulder Screw
2	MAH00071	2	3/8-16 NC x 2-1/2" Lg. SHCS SS
3	MAH00081	12	#10-32 NF x 1/2" Lg. SHCS SS
4	MAH00085	4	5/16-18 NC x 2" Lg. HHCS SS
5	MAH00141	28	5/16-18 NC x 3/4" Lg. FHSCS SS
6	MBA00007	7	3/8-16 NC Finished Hex Nut
7	MBE00006	4	5/16" Regular Split Lock Washer.
8	MBE00007	7	3/8" Regular Split Lock Washer
9	MBF00007	5	3/8" Type 'A' Wide Flat Washer
10	MBG00002	5	1/2" Type 'AN' Flat Washer
11	MFA00014	1	6MPT Plug
12	MJK00002	1	Thermometer
13	MJQ00287	1	1/16" x 5" x 13-1/4" Gasket
14	MKI00002	1	100 OHM PLATINUM RTD
15	MLI00001	2-1/2'	1/2" Flexible Conduit
16	MLJ00012	1	1/2" straight Conduit Connector
17			
18	MLL00004	11'	#18 Type TGGT Electrical Wire
19	MLL00025	20'	#12 Type TGGT Electrical Wire
20	MLM00012	2	Connector
21	MLM00024	21	Ring Terminal
22			
23			
24	2410602	1	Terminal Enclosure Cover Gasket
25	2410603	2	Terminal Enclosure Gasket
26	2413401	1	Heater Support Roller
27	2420901	2	Heater & Pivot Arm Splice Plate
28	2422601	6	Heater Splice Plate Spacer
29	2425101	1	Heater Roller Housing
30	2425202	2	Heater Roller Housing Gasket
31	2428503	1	Butt Plate Heater Body
32	2428506	2	Heater Butt Plate
33	3603102	1	Heater Terminal Enclosure
34	3603103	1	Heater Terminal Enclosure Cover
35	3613201	1	Heater Roller Housing Roller Pin
36	MBA00004	12	#10-24NC HEX NUT

#824A BUTT PLATE HEATER ASSEMBLYPARTS LIST (Continued)

ITEM	PART NO.	QTY	DESCRIPTION
------	----------	-----	-------------

NOTES:

1. Set and check temperature per SP-9.
2. Install w/high temperature anti-seize compound.
3. Remove exposed threads flush with nut.
4. Locate parts as shown in Section A-A.

DRAWING REVISION HISTORY LISTING

PART NO: 2428501
DESCRIPTION: #824A BUTT PLATE HEATER ASSEMBLY

<u>APPR.</u>	<u>REV</u>	<u>DATE</u>	<u>BY</u>	<u>DESCRIPTION OF REVISION</u>
B	B	4/25/95	SWB	IGES from Bravo to AutoCad. Created typed parts list. Combined sheet 10 with sheet 1.
SWB	C	11/19/97	DJL	ITEM 11 WAS INT. SNAP RING MCA00011. REVISED TO PIPE PLUG MFA00014.
TLW	-	12/15/97	TGW	REVISED NOTE 2 TO REMOVE REFERENCE TO SCHEMATIC 2400400. ADDED NOTE 5 (WIRE PER SCHEMATIC ...).
TLW	-	04/15/98	TLW	REVISED ITEM #16 (MLJ00001) TO (MLJ00012) PER. AS400.
SWB	D	11/2/98	DJL	ADDED HEATER SCHEMATICS FOR DIFFERENT VOLTAGES. ADDED DETAILS C & D ON SHEET 1B. REMOVED ITEM 22 MLN00380 HIGH TEMP WIRE MARKER (NOT USED). CHANGED NOTE 2, WAS WIRE PER SP-103 & REMOVED NOTE 5. REMOVED ITEM 17 MLJ00004 1/2" SEALING RING (NOT USED). REMOVED ITEM 23, 223901 HEATER TAG, (NOT USED). INCREASED LENGTH ON ITEM 18, #18 WIRE FROM 8' TO 11'. ADDED ITEM 36, #10 HEX NUTS.
PJB	E	04/04/02	BEA	CORRECTED HEATER WATTAGE FROM 10,900 TO 10,950 TO MATCH AS-BUILT CONDITION.
SWB	F	03/01/06	BEA	ITEM #16, CONDUIT CONNECTOR, WAS INCORRECTLY IDENTIFIED ON DRAWING AS ITEM #20.
JRP	G	04/18/06	BEA	CHANGED LABEL OF 415V HEATER SCHEMATIC TO 380-415V.
SWB	H	05/09/06	BEA	ADDED 480 VOLT HEATER SCHEMATIC.