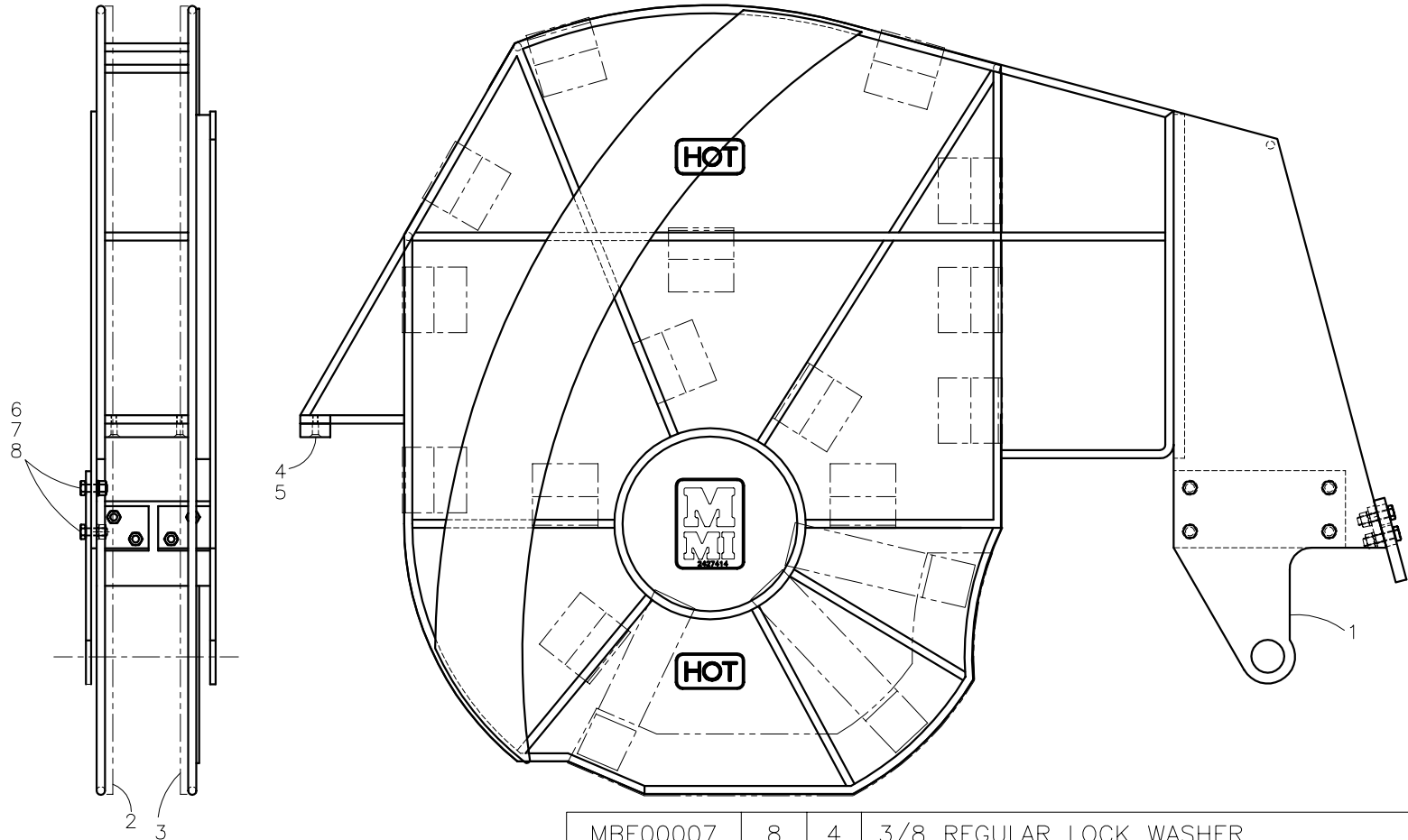




McElroy Manufacturing, Inc.
 The leader by design.
 Tulsa, Oklahoma U.S.A.

DRAWN: DJL	CHECK: SWB	APPRV'D: B	DATE: 8/14/97	DWG No: 2427400	SHT No: 1	REV No: B	PART No: 2427401
#824A HEATER PANEL & FRAME ASSEMBLY							CAD No: 2427401

NOTE: THIS DRAWING AND THE INFORMATION CONTAINED THEREIN IS THE CONFIDENTIAL AND PROPRIETARY PROPERTY OF McElroy Manufacturing, Inc. THE DRAWING IS NOT TO BE REPRODUCED IN ANY MANNER, SUBMITTED OUTSIDE PARTIES FOR EXAMINATION, OR USED DIRECTLY OR INDIRECTLY FOR THE PURPOSES OTHER THAN THOSE FOR WHICH IT WAS FURNISHED WITHOUT WRITTEN PERMISSION OF McElroy Manufacturing, Inc.



MBE00007	8	4	3/8 REGULAR LOCK WASHER
MBA00007	7	4	3/8-16NC HEX NUT
MAB00064	6	4	3/8-16NC X 1" LG HHCS
MAD00045	5	2	1/4-20NC X 1" LG FHSCS STL BL
2427410	4	1	HEATER PANEL FRAME REST PLATE
2427414	3	1	HEATER INSULATING PANEL
2427413	2	1	HEATER INSULATING PANEL
2427402	1	1	HEATER PANEL FRAME WELDMENT

UNLESS NOTED OTHERWISE: (3) PLC. DIM'S .XXX = ±0.005" (2) PLC. DIM'S .XX = ±0.010" FRACTIONAL DIM'S = ±1/32" ANGULAR DIM'S = ±1/4" REMOVE ALL BURRS BREAK ALL SHARP EDGES STAMP OR ETCH P/N ON ALL DETAIL PARTS

MMI NUMBER	ITEM	QTY.	SIZE AND DESCRIPTION
			ASSEMBLY

DRAWING REVISION HISTORY LISTING

PART NO: 2427401

DESCRIPTION: #824A HEATER PANEL & FRAME ASSEMBLY

<u>APPR.</u>	<u>REV</u>	<u>DATE</u>	<u>BY</u>	<u>DESCRIPTION OF REVISION</u>
SWB	A	8/14/97	DJL	REDRAWN TO 'A' SIZE. WAS HEATER BAG FRAME ASSEMBLY. MOVED TIE PLATE(2427409) & RETAINER PLATE(2427406) PLUS HARDWARE TO FRAME WELDMENT. ADDED HEATER PANELS TO DRAWING.
SWB	B	05/03/02	BWW	REVISED TO MOVE ITEM 6 MAB00064 QTY 4, ITEM 7 MBA00007 QTY 4, AND ITEM 8 MBE00007 QTY 4 FROM 2427402 HEATER PANEL FRAME WELDMENT TO MATCH ASSEMBLY PROCESS.