



McElroy Manufacturing, Inc.

The leader by design.

Tulsa, Oklahoma U.S.A.

DRAWN: SS

CHECK: BWP

APPRVD: B

DATE: 10/07/96

SHT No: 5

REV No: F

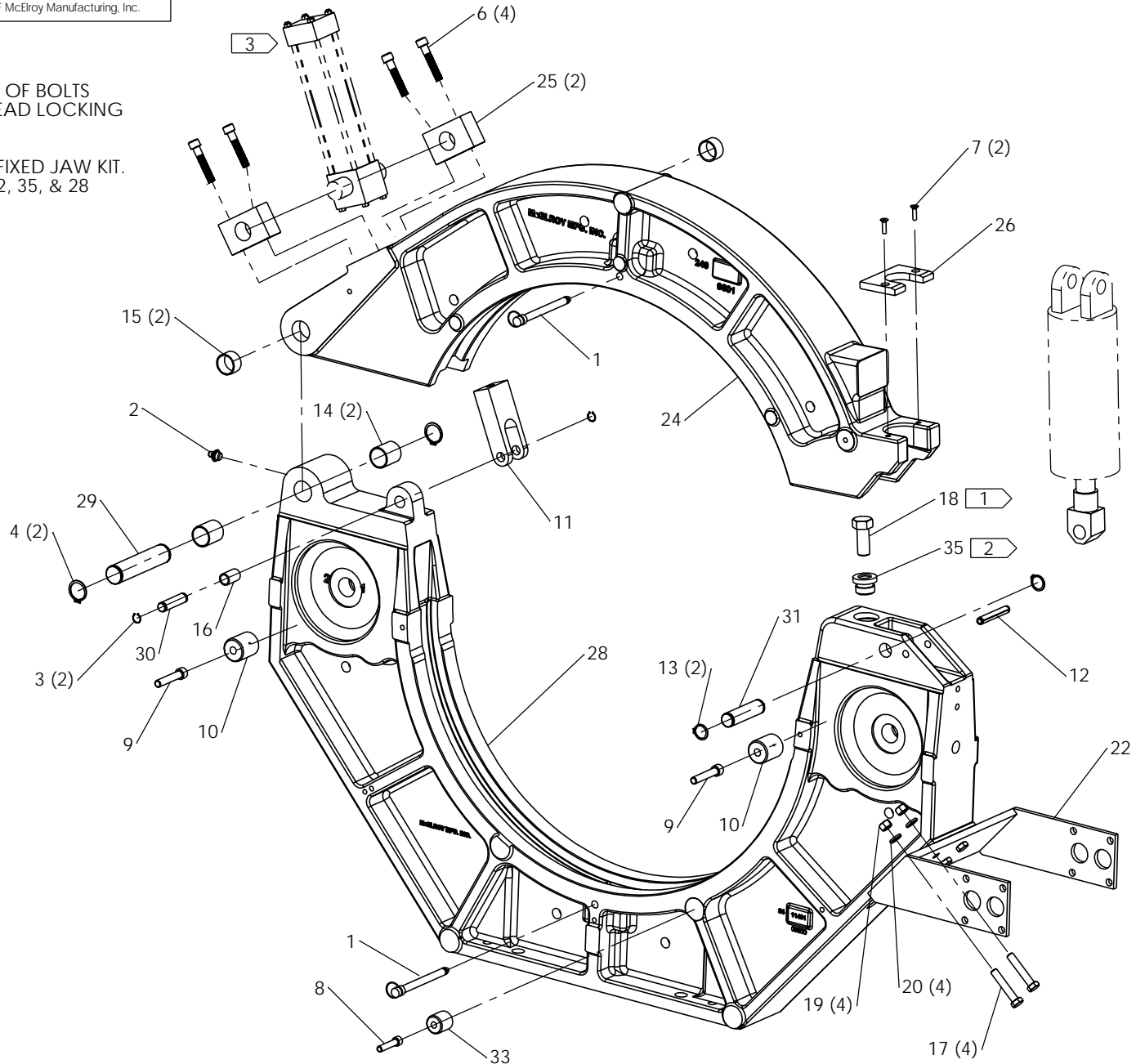
PART No: 2421303

# 824A INNER FIXED JAW ASSEMBLY

NOTE: THIS DRAWING AND THE INFORMATION CONTAINED THEREIN IS THE CONFIDENTIAL AND PROPRIETARY PROPERTY OF McElroy Manufacturing, Inc. THE DRAWING IS NOT TO BE REPRODUCED IN ANY MANNER, SUBMITTED TO OUTSIDE PARTIES FOR EXAMINATION, OR USED DIRECTLY OR INDIRECTLY FOR THE PURPOSES OTHER THAN THOSE FOR WHICH IT WAS FURNISHED WITHOUT WRITTEN PERMISSION OF McElroy Manufacturing, Inc.

NOTES:

1. HAND GRIND OFF RIDGES ON TOP OF BOLTS
2. INSTALL WITH HIGH STRENGTH THREAD LOCKING COMPOUND.
3. LOCATE PORT ON NEAR SIDE.
4. ORDER # A2411401 LOWER INNER FIXED JAW KIT. INCLUDES ITEMS 18, 12, 16, 15, 14, 2, 35, & 28 PRE-ASSEMBLED.



**#824A INNER FIXED JAW ASSEMBLY**PARTS LIST

ITEM	PART NO.	QTY	DESCRIPTION
	<b>2421303</b>		<b>ASSEMBLY</b>
1	MCE00004	2	3/8" DIA. x 3.75" GRIP DETENT PIN
2	MFJ00002	1	GREASE ZERK
3	MCB00001	2	EXTERNAL SNAP RING
4	MCB00006	2	EXTERNAL SNAP RING
5			
6	MAC00338	4	3/8-24NF x 2" LG. SHCS
7	MAD00033	2	#10-24NC x 3/4" LG. FHSCS
8	MAC00077	1	5/16-18NC x 1-1/2" LG. SHCS
9	MAC00098	2	3/8-16NC x 2" LG. SHCS
10	MJC00001	2	REST BUTTON
11			
12	MCG00023	1	3/8" DIA. x 2-1/2" LG. ROLL PIN
13	MCB00003	2	EXTERNAL SNAP RING
14	MDM00004	2	BUSHING
15	MDM00003	2	BUSHING
16	MDM00001	1	BUSHING
17	MAB00068	4	3/8-16NC x 2" LG. HHCS
18	MAH00038	1	5/8-18NF x 1-1/2" LG. HHCS W/NYLON LOCK
19	MBA00007	4	3/8-16NC FINISHED HEX NUT
20	MBE00007	4	3/8" REGULAR SPLIT LOCK WASHER
21	2402202	1	UPPER JAW PIVOT CYLINDER CLEVIS
22	2423802	1	FIXED JAW VALVE STACK MTG. ANGLE WLDMT.
23			
24	2409901	1	UPPER JAW
25	3607101	2	TRUNNION BLOCK ASSEMBLY
26	2416701	1	UPPER JAW CLAMP PAD
27			
28	2411401	1	LOWER INNER FIXED JAW
29	2414001	1	1" DIA. JAW PIN
30	2414002	1	1/2" DIA. JAW PIN
31	2414003	1	3/4" DIA. JAW PIN
32			
33	3603618	1	JAW REST BUTTON
34			
35	3619101	1	THREADED INSERT

## DRAWING REVISION HISTORY LISTING

**PART NO:** 2421303  
**DESCRIPTION:** #824A INNER FIXED JAW ASSEMBLY

<u>APPR.</u>	<u>REV</u>	<u>DATE</u>	<u>BY</u>	<u>DESCRIPTION OF REVISION</u>
SWB	B	10/26/98	TGW	ADDED ITEMS 17, 19, 20 & 22.
TLW	-	5/20/99	DJL	ADDED NOTE 4 FOR PRE-ASSEMBLED JAW KIT.
SWB	C	07/06/01	BWW	REVISED TO REMOVE ITEMS 11 MAA00126 AND 34 2426401. UPPER FACER STOP WAS FOUND TO BE UNNECESSARY.
MLM	D	5/13/03	RLE	REVISED ITEM #7, MAD00032 #10-24NC x 5/8 LG. FHSCS, TO MAD00033 #10-24NC x 3/4 LG. FHSCS. NEEDED LONGER SCREW DUE TO INCREASE IN UPPER JAW CLAMP PAD THICKNESS.
SWB	E	01/04/05	BWW	REMOVED ITEM 32 2415901 TO MATCH AS BUILT CONDITION. THIS REVISION TOOK EFFECT WITH THE REVISION OF 2400801 HYDRAULIC SCHEMATIC ON 4/15/03.
SWB	F	1/04/07	PJD	REVISED AND REDRAWN TO SHOW EXPLODED VIEW TO IMPROVE CLARITY FOR ASSEMBLY.